

The *Willochra*, previously Troopship 54, on May 14, 1919, repatriated 410 internees to Germany, including three women & 17 children.

Until late 1916 NZ had individual cancels for each voyage. The *Willochra* made several round trips during the war and this cover is from the 54th. This marking was used from May 29 to July 26, 1916.



New Zealand WW1 Internment Camp Mail

This exhibit documents the correspondence sent & received by WW1 internees in NZ and the censorship markings applied thereto from 1915 until 1919 when the internees were repatriated to Germany.

This exhibit encompasses the four known printings of formula postal cards and five of seven formula envelopes. There are usages to NZ, Cook Island, Brazil, & an Australian internment camp. Incoming mail from USA & Samoa and rare censorship markings from Motuihi & Somes Islands are shown. The Davenport postal card is the discovery formula postal card from this camp.

Nine of the covers are from naval cadet, Ensign Albert Paulsen, to Miss Emma Meyer. Albert was captured early in the war on Samoa and interned on Motuiki Island. He participated in Count Felix von Luckner's escape in 1917. After recapture he was interned on Somes Island as an escape risk. He was later moved to Featherston Internment Camp prior to repatriation to Germany in 1919.

Dr. Andrew Dove, in a October 24, 1915 presentation to the RPSNZ, indicated he has

documented 76 POW letters and cards and suspects there are less than 100 total remaining. This exhibit has 24 outgoing, 5 incoming & 2 guard mail.

Exhibit Organization

Internment Camps – Mail from three internment camps – 4 pages, 2-5

Censor Markings – Internment camp censor markings – 2 pages, 6-7

POW stationery – Printed for POW use – 5 pages, 8-12

Inter-POW Camp Mail – Mail to Liverpool NSW – 1 page, 13

Incoming Mail – From USA & Samoa – 2 pages, 14-15

Guard Mail – Internal & external mail with handstamp – 1 page, 16

This exhibit contains:

- Discovery Devonport Internment Camp formula postal card
- One of two known PC / Somes Internment Camp censor marking
- Incoming letter from California
- Three covers to Holsworthy, NSW, Australia, concentration camp.
- Covers & card from Featherston Internment camp which was not listed in Startup & Proud's 'History of the New Zealand Military Postal Services 1845 – 1991'.

Internment Camps

Somes Island

Somes Island Internment Camp was the first internment camp established in NZ and was for second class, or ordinary, prisoners. It was in continuous use from August 13, 1914 until December 14, 1918 when the POWs were moved to Featherston Internment Camp in preparation for repatriation to Germany.

August 12, 1914 there were 80 internees. These were German officers & reservists residing in New Zealand. By the time the camp closed there were 321 (Wanganui Chronicle - 17 Dec 1918). This is more than twice the number reported by Startup & Proud in *History of the New Zealand Military Postal Services 1845-1991*.

April 1916 the camp contained second class internees and these were divided into three groups: thirteen Samoans; twelve Aristocratic Democrats; & the remaining 221. The first two groups were able to afford to pay for a cook.

POSTKARTÉ FÜR KRIEGSGEFANGENEN.

Ausser dem Datum und der Unterschrift, darf auf dieser Karte nichts geschrieben werden.

Wenn sonst etwas hinzugefügt wird, wird die Karte nicht befördert.

Nicht passende Sätze sind auszustreichen.

Postkarten werden ohne Aufenthalt abgeliefert.

Es geht mir gut.

~~Ich bin im Lazarett und gut aufgehoben, auf der Besserung.~~

Ich hoffe bald ganz hergestellt zu sein.

Ich habe

(deinen	Brief
Ihren	
dein	
Ihr	Postet

 mit grosser Freude erhalten.

Bei nächster Gelegenheit sollst Du einen Brief erhalten. ~~sollen Sie~~

Von ~~Ihr~~ ^{mir} habe ich ~~kurzweil~~ ^{lange} nichts gehört.

Prisoners of War Camp
at Somes Island,
New Zealand.

Datum: 2. 11. Juli 1918.

Unterschrift: Heinrich Paulsen.
1,000/5/16-6781] Wohne. P.O.W. 476.

ON POSTAL SERVICE.

Post FREE.

PRISONERS OF WAR CORRESPONDENCE.

PASSED BY THE
MILITARY CENSOR
N.Z.

J.H.

Franklin Emma Meyer

Hoya a.d. Weser

Leichstraße 102 f 3.

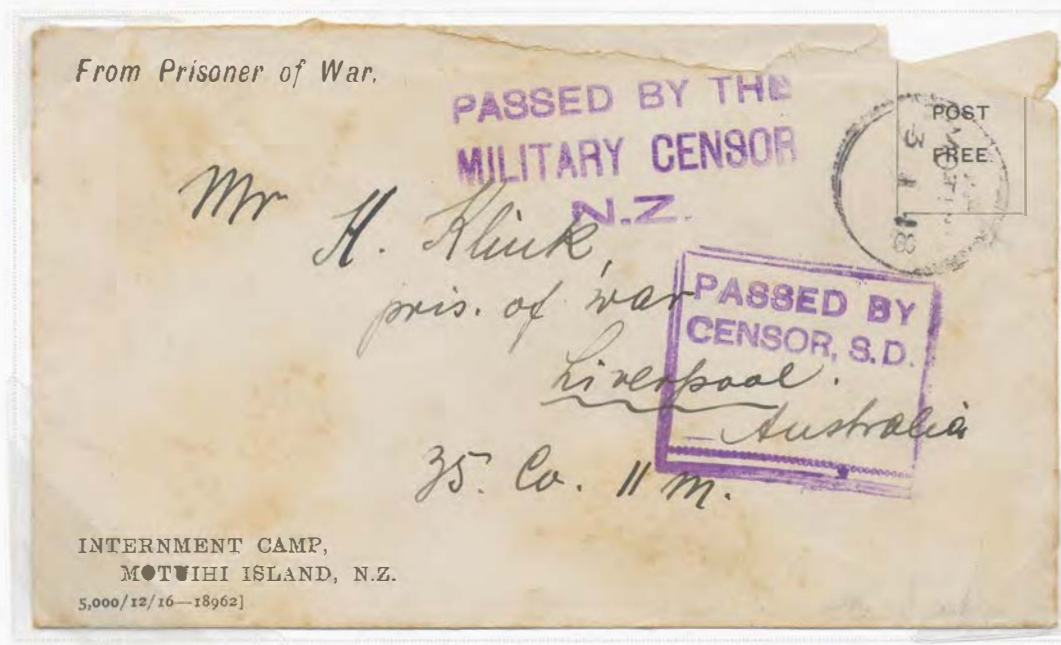
Deutschland.

Internment Camps

Motuihi Island

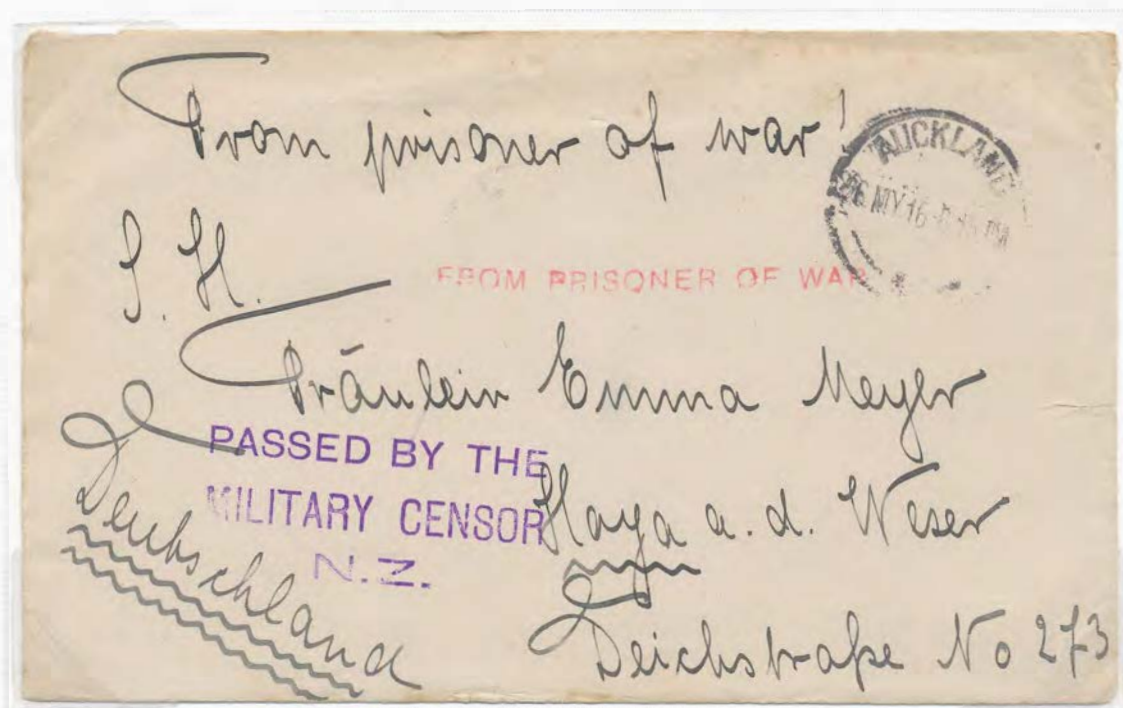
Jan 3, 1918 postmark is over 11 months earlier than the earliest date reported by Richard Wooders.

Scarce usage to Liverpool NSW POW camp.

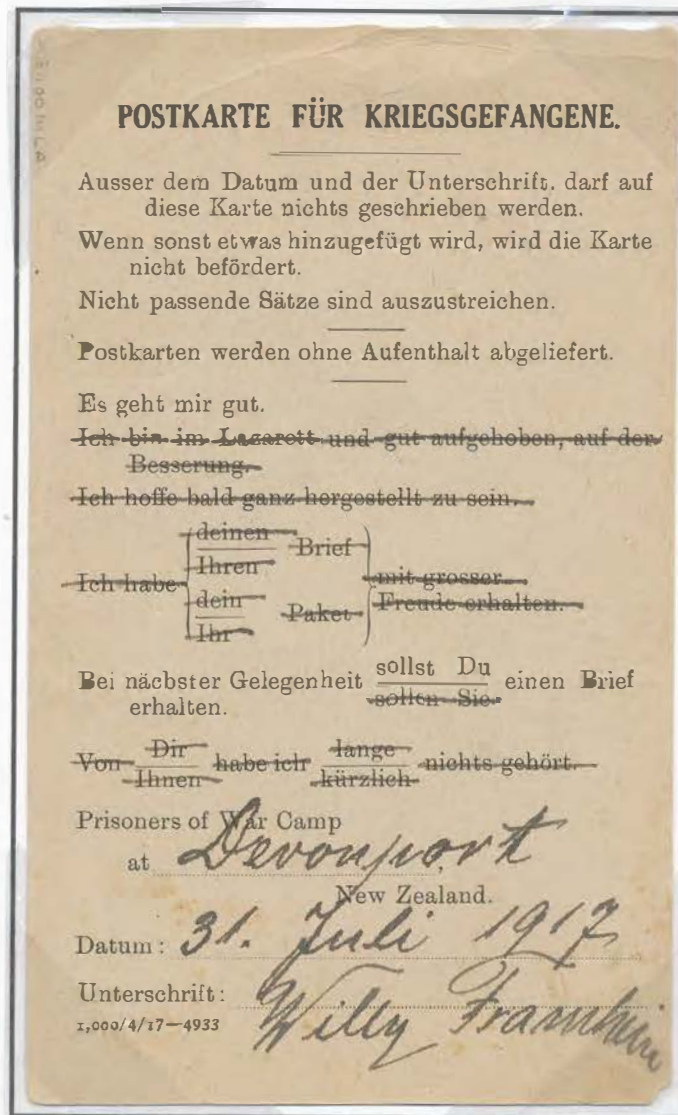


Motuihi Island was established October 22, 1914 and was in continuous use until December 16, 1918 when the POWs were moved to Narrow Neck Internment Camp. It was the only camp to house first class internees. Additionally, it housed second class internees.

Initially there were nine internees which were the Samoan Governor & his party. Two weeks later an additional 30 Samoan Germans were transferred from Somes Island. Most Samoan Germans were eventually interred at Motuihi Island. Proud & Start up wrote that there were a maximum of 83 internees. I have been unable to confirm this number. Newspapers did not report the number transferred from Motuihi to Narrow Neck. The Ashburton Guardian of September 7, 1917, reported that the average daily number of internees at Motuihi from April 1, 1916 to March 31, 1917 was 51.5



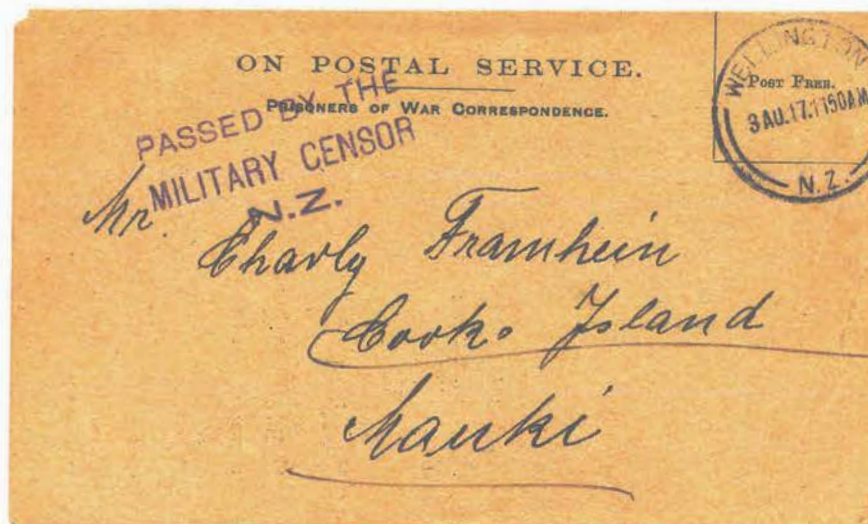
Internment Camps Devonport



This is the discovery piece of Devonport POW correspondence. It was postmarked in Wellington where the censor marking was applied.

Devonport is both referred to as an Internment Camp and a Detention Barracks which housed second class POWs. It was also used as a holding facility until prisoners were assigned to a camp. It averaged 16 prisoners between April 1, 1916 & March 31, 1917.

This card went to Cook Island, a scarce destination.

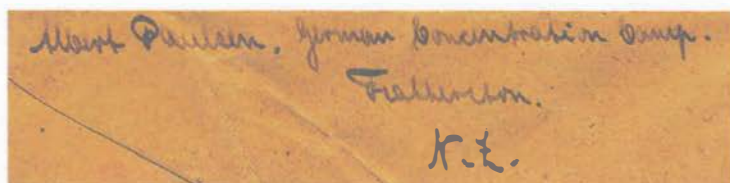


Internment Camps

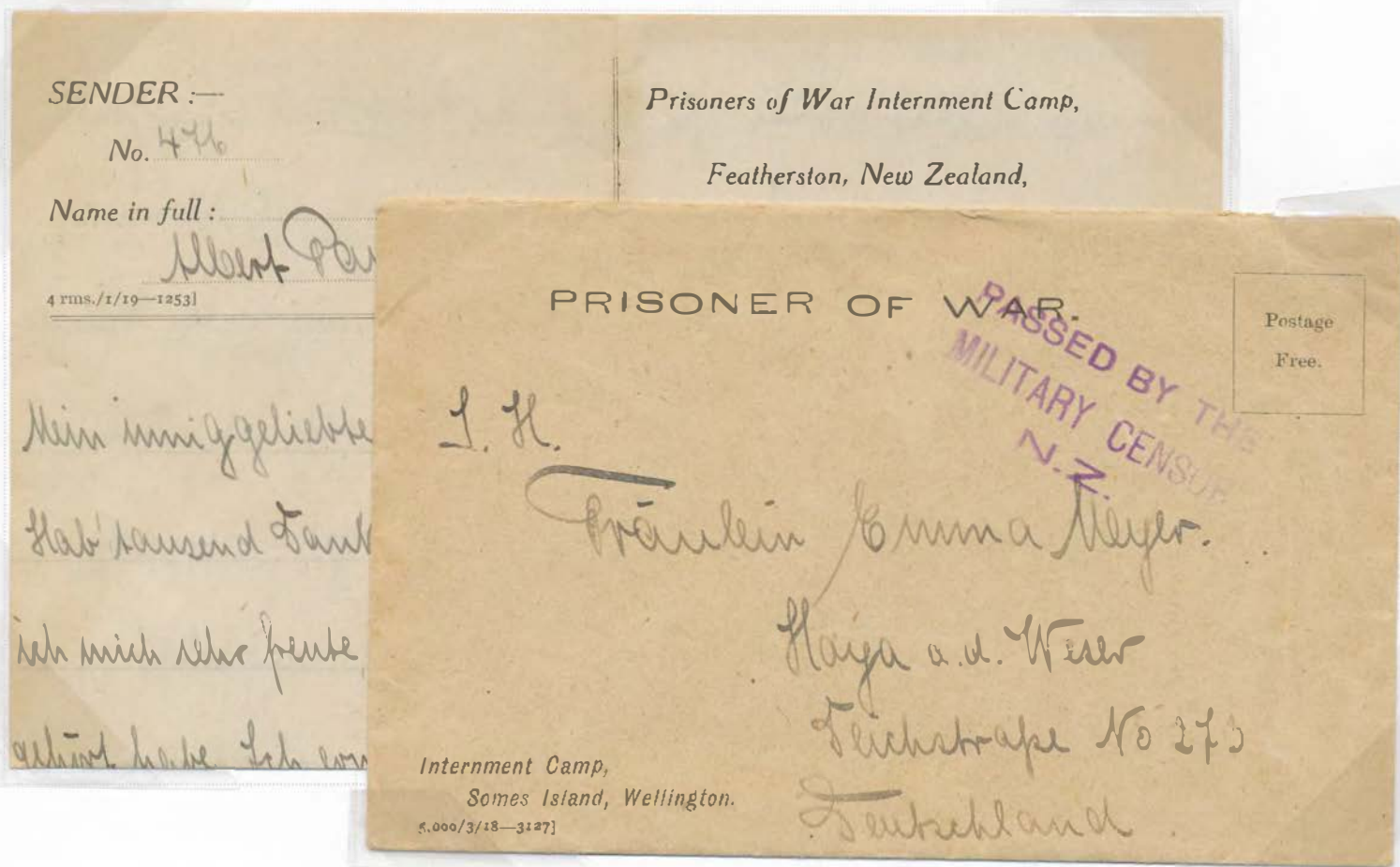
Featherston



Featherston internment camp cover created from a OHMS envelope by the addition of 'From Prisoner of War' & 'Featherston Camp' indicia handwritten by Albert Paulsen.



A cover documenting the use of a Somes Island envelope at Featherston. This is proved by the return address & the formula letter sheet. This is the only formula letter sheet known from Featherston.



Censor Markings

Motuihi Island

This letter was written March 29, 1915. Some letters, especially early in the war, were not cancelled and only the enclosed letter tells when they were written.

The *OPENED BY THE MILITARY CENSOR* marking is scarce on POW mail.



From Prisoner of War! was written by the internee. The red handstamp FROM PRISONER OF WAR would have been applied by the Motuihi censor. The *OPENED* & the *PASSED* censor handstamps were applied at the Auckland censor center. The top letter was initialed by a censor in the lower left corner.

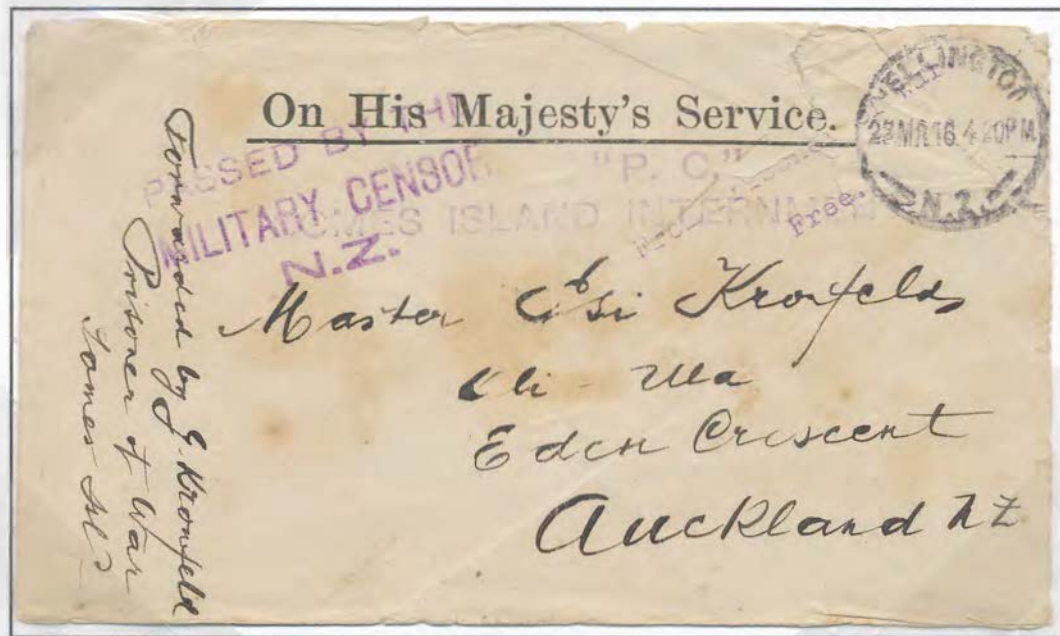


The round red censor handstamp is 33mm in diameter with 8mm letters P.C. and 3mm POSTAGE FREE & PRISONERS OF WAR. In the April 2004 Informer George Branam's research correctly postulated that this marking was applied in Britain as he found copies that did not transit through New Zealand.

Censor Markings

Somes Island

Scarce "PC" censor marking with only four known.



"PC" SOMES ISLAND INTERNMENT CAMP

Forwarded by (instead of From) Prisoner of War! written by the internee. The purple handstamps "PC" / SOMES ISLAND INTERNMENT CAMP & From Prisoner of War / Free applied by the Somes Island censor. The PASSED handstamp was applied at the Wellington censor center.

Two OHMS covers used prior to issuance of formula POW envelopes. Envelopes from two different printings as the line under OHMS is 180mm on the top cover & 183 mm on the bottom cover. From Prisoner of War / Free was applied by the Somes Island censor. The PASSED handstamp was applied at the Wellington censor center.

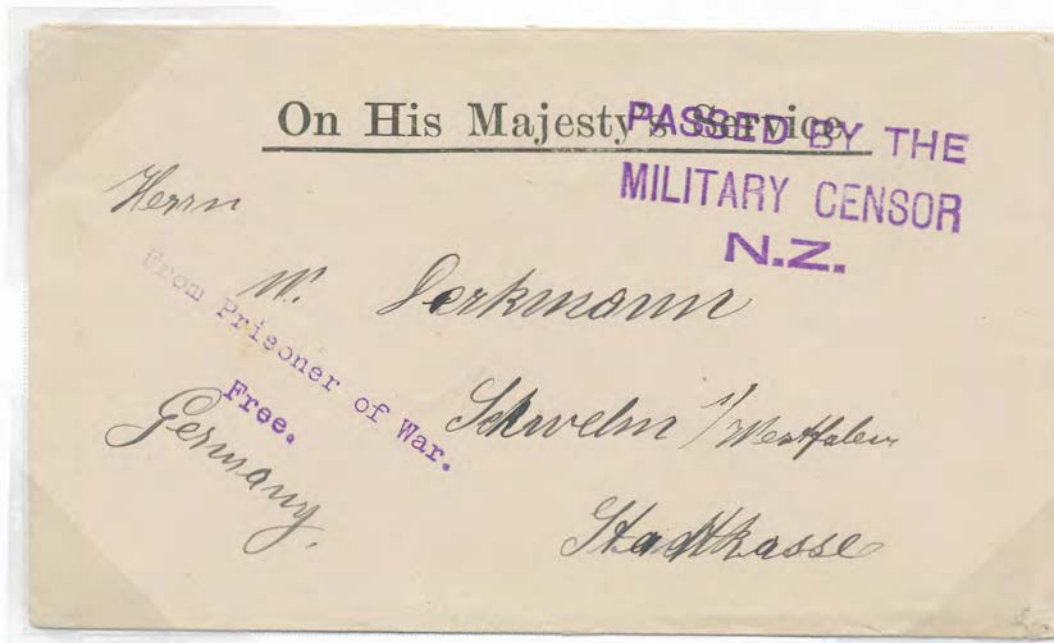


75% size

Censor marking initialed by censor on reverse

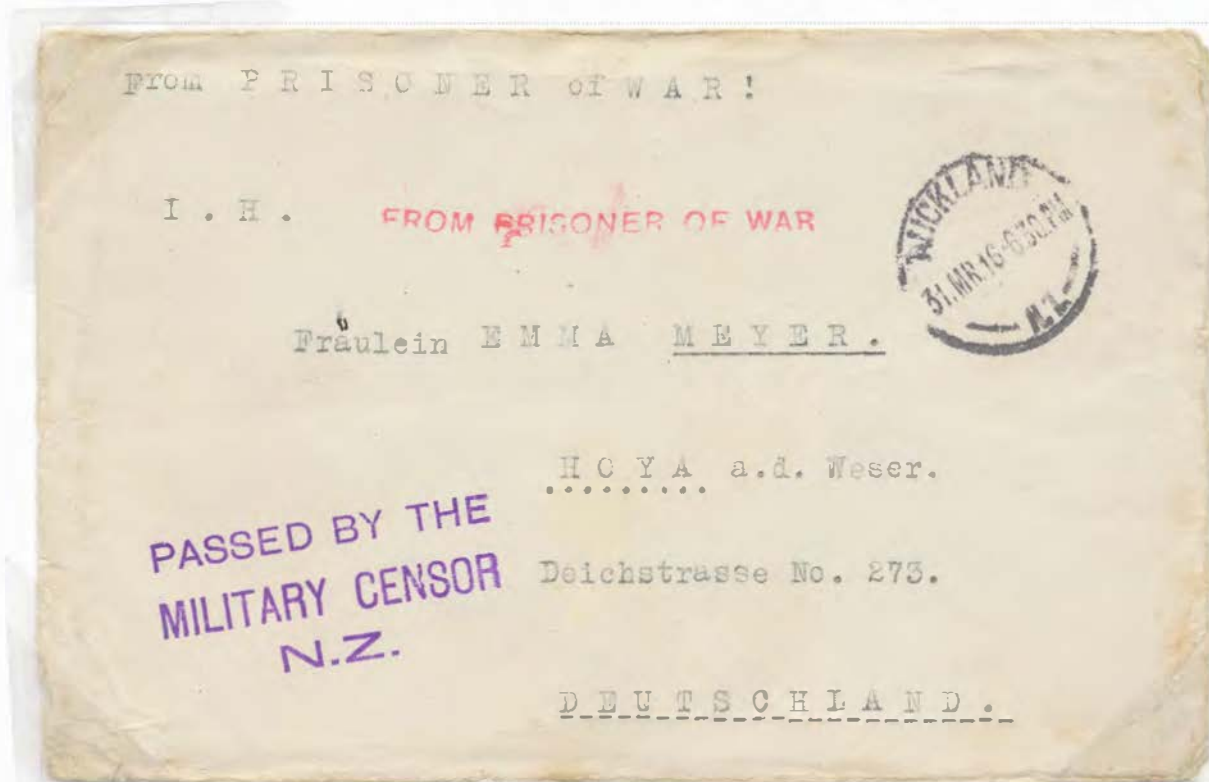
POW Stationery Pre Formula Envelopes

Camps used different accounting procedures to control POW correspondence. Some Island used OHMS envelopes as their control measure. Motuihi allowed plain envelopes & postal stationery as they had fewer prisoners. During the pre formula envelope period Some had five times more prisoners than Motuihi.



OHMS envelope used for prisoner correspondence at Some Island prior to the issuance of formula envelopes. *From Prisoner of War / Free* was applied by the Some Island censor. The *PASSED* handstamp applied at the Wellington censor center.

Motuihi Island plain envelope used for prisoner correspondence prior to the issue of formula envelopes. *FROM PRISONER OF WAR* applied at Motuihi and the *PASSED* handstamp applied at the Auckland censor center.



POW Stationery
Pre Formula Envelopes

Postage not required for
POW correspondence.



Only known Samoa lettercard used from Motuihi and only know correspondence sent to Brazil. 11,080 of these lettercards overprinted in two printings. This is from the first printing of October 1, 1914, issued October 5. *From Prisoner of War / Free* was applied by the Motuihi censor. The *PASSED* handstamp applied at the Auckland censor center.

Motuihi Island postal card, issued in 1907, used for correspondence to Bavaria, Germany. *FROM PRISONER OF WAR* is scarce in purple and applied at Motuihi and the *PASSED* handstamp applied at the Auckland censor center. The round red censor marking was applied in Britain.



POW Stationery

Postal Cards

POSTKARTE FÜR KRIEGSGE

Ausser dem Datum und der Unter
diese Karte nichts geschriebe
Wenn sonst etwas hinzugefügt wird
nicht befördert.

Nicht passende Sätze sind auszusti

Postkarten werden ohne Aufenthalt

Es geht mir gut.

~~Ich bin im Lazarett und gut aufge~~
~~Besserung.~~

~~Ich hoffe bald ganz hergestellt zu s~~

Ich habe

deinen	Brief
Ihren	
dein	Paket
Ihr	

 mit gross
Freude e

Bei nächster Gelegenheit sollst Du
erhalten. ~~sollen Sie~~

Von ~~Dir~~ habe ich ~~lange~~ kürzlich ~~nicht~~

Prisoners of War Camp
at James Island,
New Zealand

Datum: d. 30. April 1916.

Unterschrift: Heinrich Paulsen
P.O.W. 476.
2,000/7/17-9498]

POSTKARTE FÜR KRIEGSGE

Ausser dem Datum und der Unte
diese Karte nichts geschrieb

Wenn sonst etwas hinzugefügt wird
nicht befördert.

Nicht passende Sätze sind auszus

Postkarten werden ohne Aufentha

Es geht mir gut.

~~Ich bin im Lazarett und gut au~~
~~Besserung.~~

Ich hoffe bald ganz hergestellt zu

Ich habe

deinen	Brief
Ihren	
dein	Paket
Ihr	

 mit gro
Freude

Bei nächster Gelegenheit sollst
erhalten. ~~sollen~~

Von ~~Dir~~ habe ich ~~lange~~ kürzlich ~~nicht~~

Prisoners of War Camp
at Featherston,
New Zealand

Datum: d. 12. März 1919.

Unterschrift: Heinrich Paulsen
P.O.W. 476.
1,000/9/16-14683]

POSTKARTE FÜR KRIEGSGEFANGENEN.

Ausser dem Datum und der Unterschrift, darf auf
dieser Karte nichts geschrieben werden.

Wenn sonst etwas hinzugefügt wird, wird die Karte
nicht befördert.

Nicht passende Sätze sind auszustreichen.

Postkarten werden ohne Aufenthalt abgeliefert.

Es geht mir gut.

~~Ich bin im Lazarett und gut aufgehoben, auf der~~
~~Besserung.~~

Ich hoffe bald ganz hergestellt zu sein.

Ich habe

Deinen	Brief
Ihren	
dein	Paket
Ihr	

 mit grosser
Freude erhalten.

Bei nächster Gelegenheit sollst Du
erhalten. ~~sollen Sie~~ einen Brief

Von ~~Dir~~ habe ich ~~lange~~ kürzlich ~~nicht~~ gehört.

Prisoners of War Camp
at Whiti / Auckland,
New Zealand.

Datum: d. 2. Oktober 1916.

Unterschrift: Heinrich Paulsen
P.O.W. M.I. 1615.
1,000/5/16-6781]

Four printings of POW postal cards are known. Three are shown on this page and the fourth is on page four of the exhibit, used at Devenport, 1,000/4/17 – 4933. Cards are designed to be used at any internment camp.

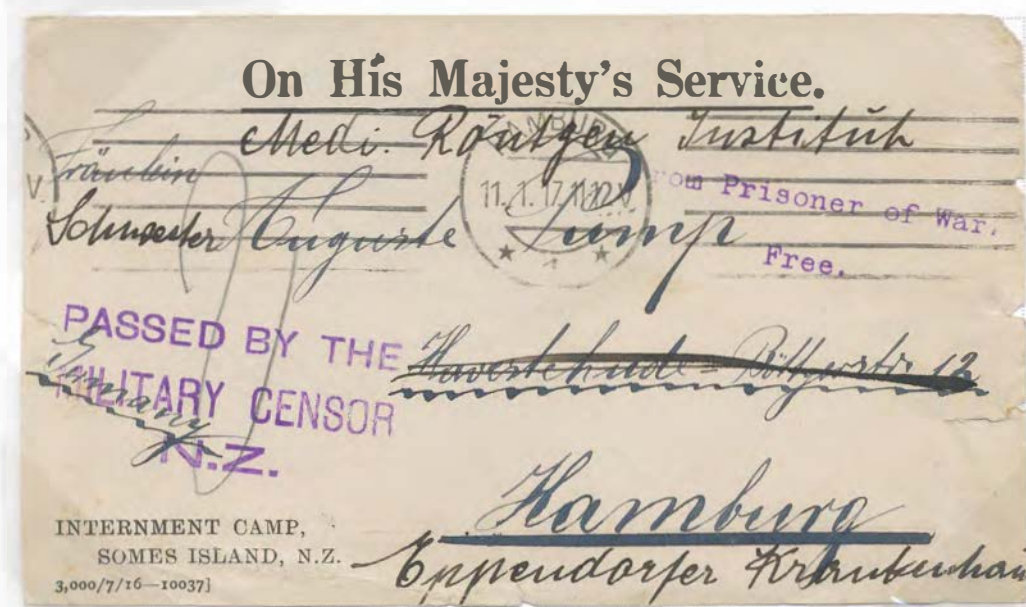
After the first printing the third line has *dieser* changed to *diese* & towards bottom *Von dir* changed to *Von Dir* for the subsequent printings.

Formula Postal Cards

# / Date / Order #	Upper right corner box	Printing on obverse
1000 / 5/16 / 6781	No Post Free indicia box	Line 1 - 72mm & Line 2 - 55mm. 10mm high. Sans Serif
1000 / 9/16 / 14683	No Post Free indicia box	Line 1 - 67mm & Line 2 - 56mm. 10mm high. Serif
1000 / 4/17 / 4933	Post Free indicia box	Line 1 - 67mm & Line 2 - 56mm. 10mm high. Serif
2000 / 7/17 / 9498	Post Free indicia box	Line 1 - 67mm & Line 2 - 57mm. 10mm high. Serif

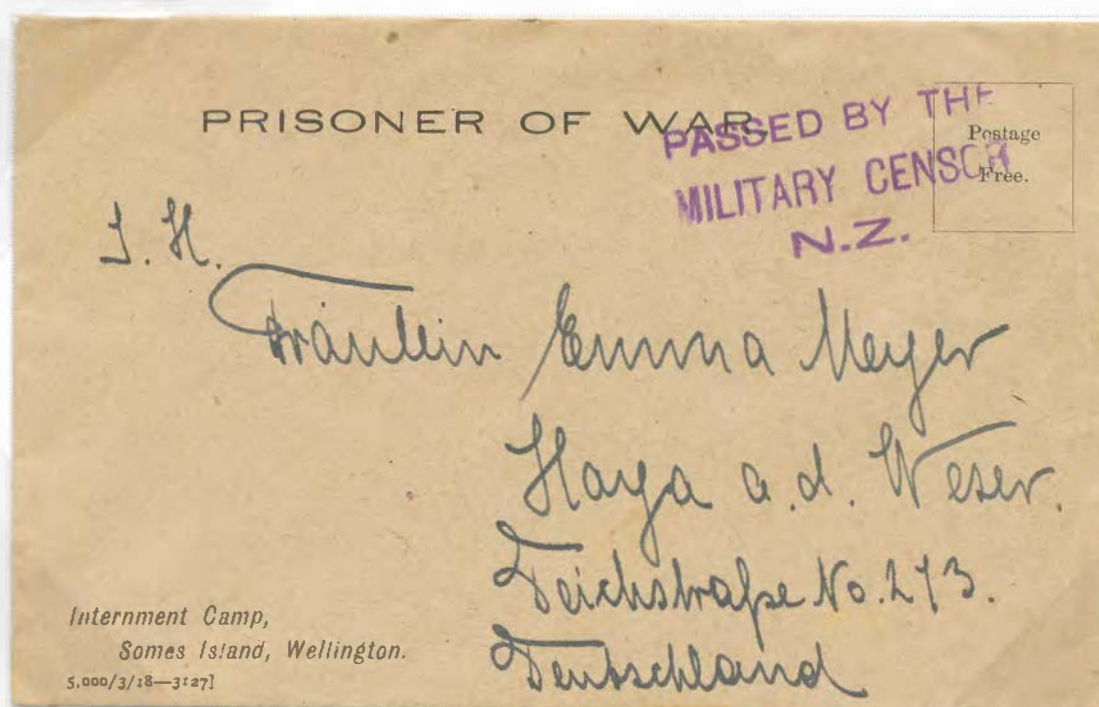
POW Stationery Envelopes

Front &
flap only



This is the only letter known held in censorship. Written November 15, 1916 but cancelled January 11, 1917.

Five envelope printings known from Somes Island totaling 23,000. First three printings had *ON HIS MAJESTY'S SERVICE*. underlined at the top. The final two printings had *PRISONER OF WAR*. at the top and a *Postage Free* indicia box. Four of the five Somes Island envelopes shown on this & the next two pages.

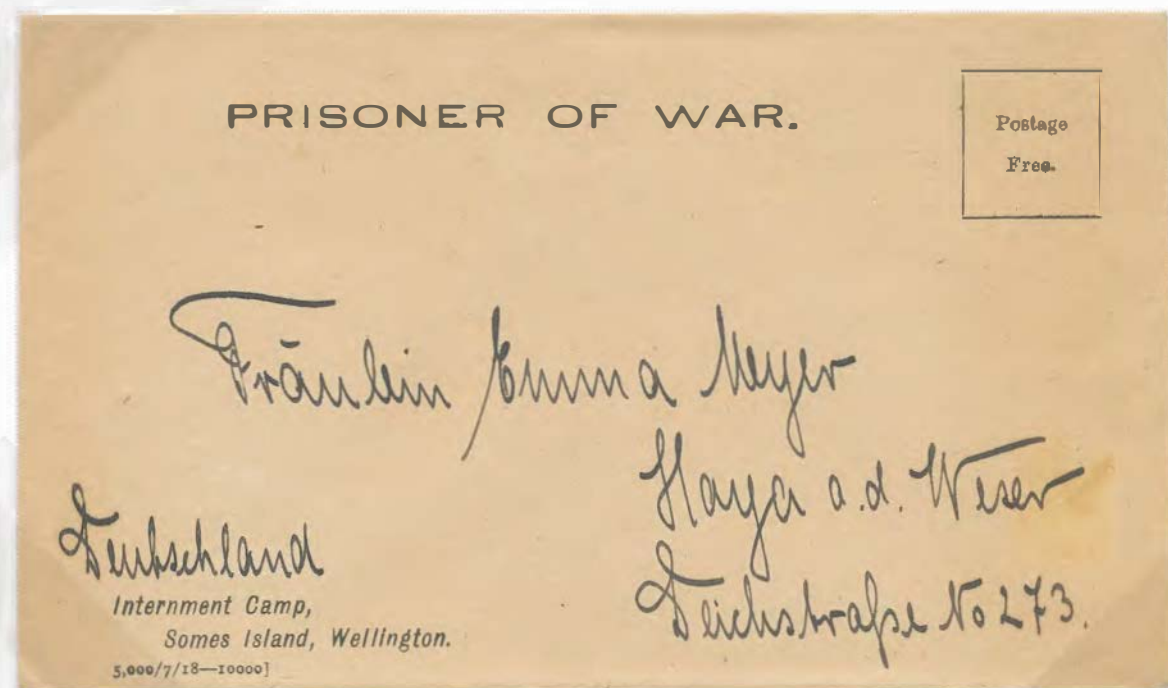


Envelope not cancelled but the enclosed letter indicates it was written May 17, 1918. Thirty five letters are known from this correspondence.

POW Stationery Envelopes

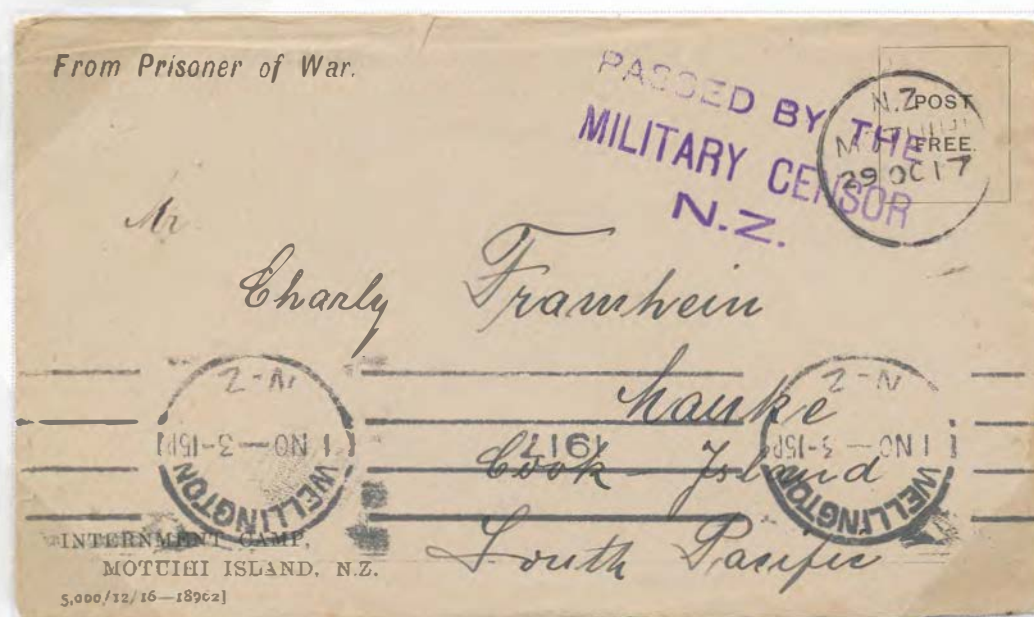
Final Somes Island envelope printing. Envelope not cancelled but the enclosed letter dated September 24, 1918.

There were at least five times as many prisoners at Somes Island as at Motuihi Island.



Formula Somes Island Envelopes

# / Date / Order #	Upper right corner box	Top Line	Lower Left Corner
3000 / 7/16 / 10037	No Post Free indicia box	OHMS.-77mm Underline-75.5mm	10mm x 38mm
5000 / 10/16 / 16495	No Post Free indicia box	OHMS. & underline	
5000 / 2/17 / 1427	No Post Free indicia box	OHMS. & underline both - 79mm	10mm x 38mm
5000 / 3/18 / 3127	Postage Free indicia box-20x19mm	POW.-3mm x 75mm No underline	11mm x 45mm
5000 / 7/18 / 10000	Postage Free indicia box-20x19mm	POW.-3mm x 75mm No underline	11mm x 45mm



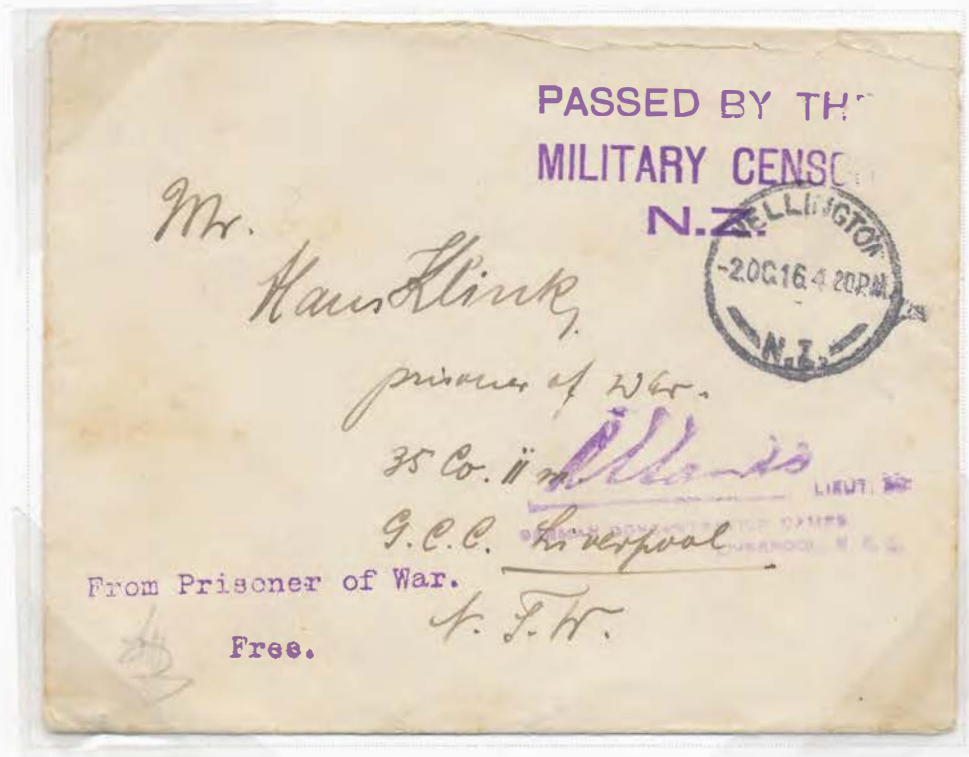
Two envelope printings known from Motuihi Island totaling 9,000.

Motuihi postmark of 29 OC 17 almost two years earlier than the opening date of the post office reported by R. Woodards. Motuihi Island had a telegraph office and associated cancel as of August 6, 1900. It was not used to cancel stamps as shown by the lack of identifiable guard mail.

Formula Motuihi Island Envelopes

# / Date / Order #	Upper right corner box	Top Line	Lower Left Corner
5000 / 12/16 / 18962	Post Free indicia box - 21x18mm	From POW. - 40mm & 3.5mm tall	9.5 x 43mm
4000 / 6/17 / 8484	Post Free indicia box	From POW.	

Inter-POW Camp Mail
to Holsworthy Internment Camp



Motuihi Island to Holsworthy Internment Camp, Liverpool NSW

From Prisoner of War / Free & PASSED handstamps applied in NZ.
R.S. Sands receiving censorship applied in Australia.

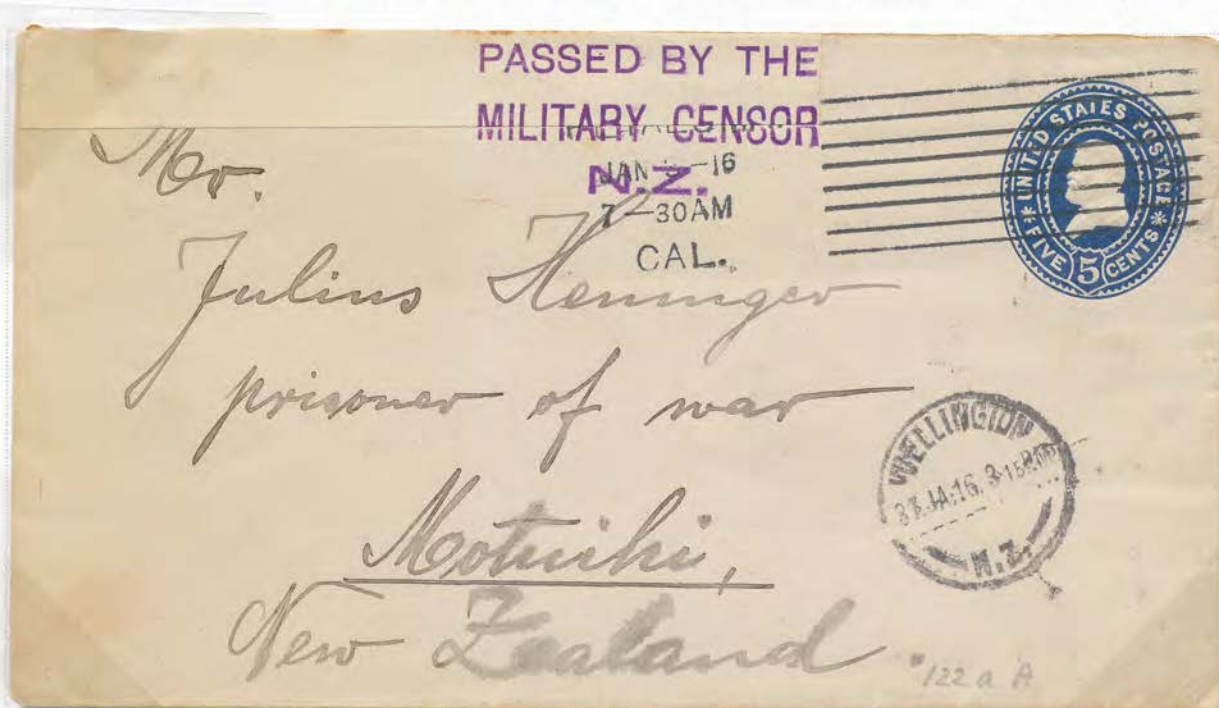


Somes Island to Holsworthy Internment Camp, Liverpool NSW

From Prisoner of War / Free & PASSED handstamps applied in NZ.
CENSORED / CONCENTRATION CAMP / LIVERPOOL receiving censorship
applied in Australia.

Incoming Mail

Incoming POW mail scarcer than outgoing mail. Few examples known until the Brenner correspondence came to market last year.



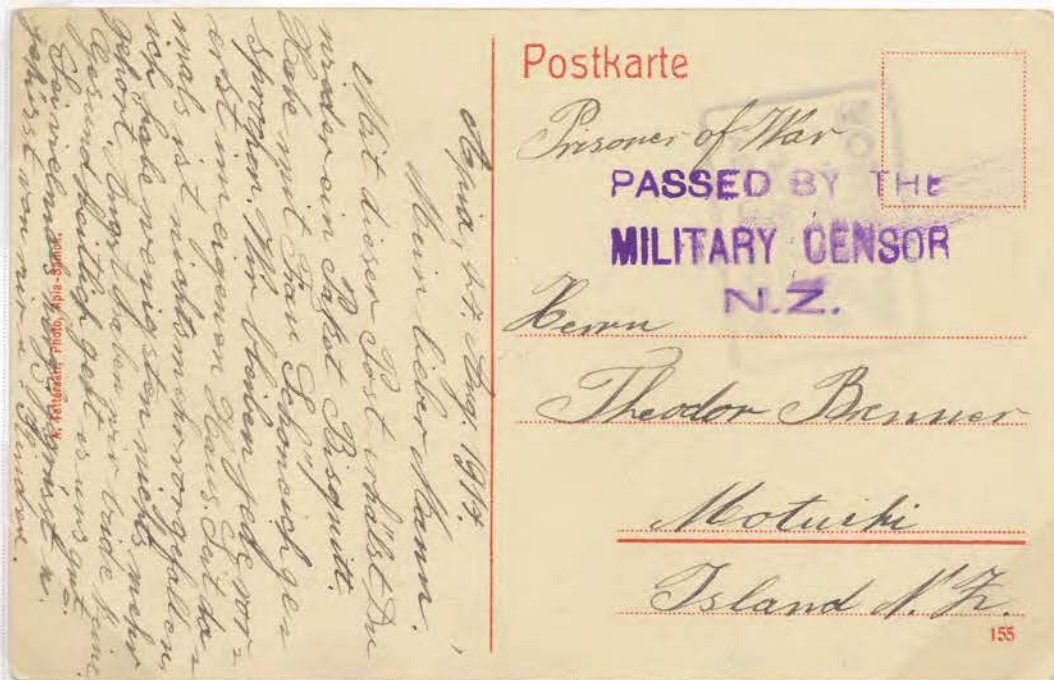
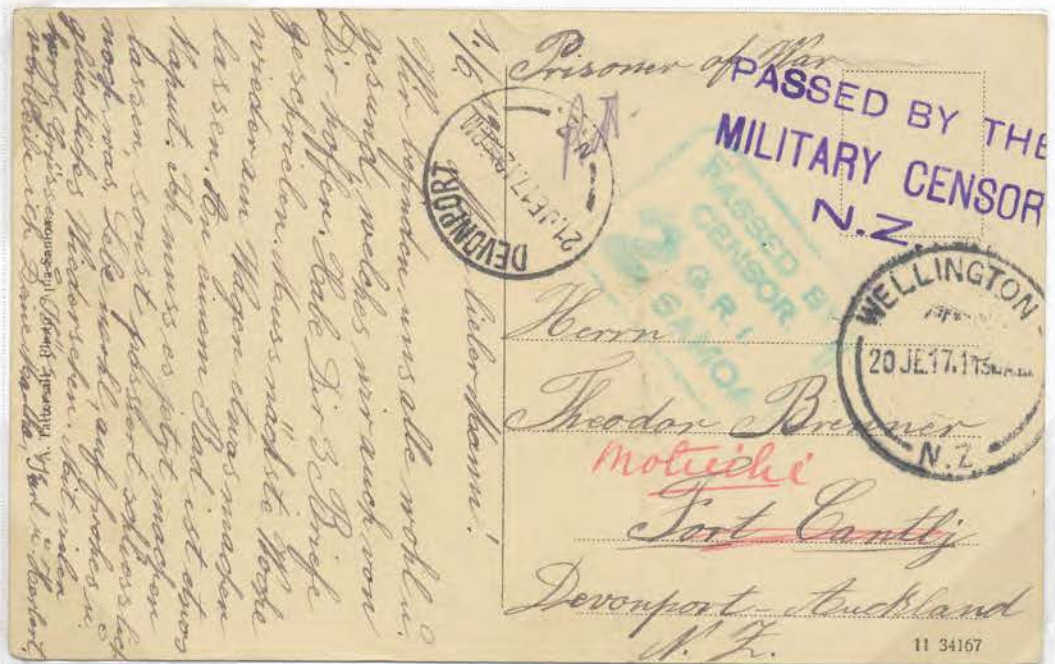
Petaluma JAN 3 16 cancel with a Santa Cruz general delivery return address. Opened & censored in NZ with white sealing tape at top. Wellington 31 JA 16 cancel.



Cancelled Apia 12 FE 17, Devenport 26 FE & Wellington 27 FE. My hypothesis is that the postcard went to Devenport uncensored, then returned to Wellington for censorship. Unusual in that censored in both Samoa and NZ. The same censor rules would have applied for both as Samoa was under NZ military occupation.

Incoming Mail

Brenner postcards all with double Samoa & NZ censorship. Middle postcard not cancelled. Typically, they were cancelled in Wellington & then at the arrival location.



Four postcards documenting Brenner's movement during incarceration. Initially held at Devenport detention camp in Fort Cantly. Moved to Motuiki by June 21, 1917 as evidenced by the readdressed postcard. Correspondence was addressed to Motuiki by August 27. He was taken to the Auckland district hospital in March 1918.

Guard Mail
Somes Island



D Matheson, Maj / Comdt. Somes Is handstamp on front

Internment Camp / Somes Island handstamp used for guard mail. An external official usage in red postmarked IAU 15 and an internal usage in purple postmarked 2 AU 1915.

