

Aylesbury & Buckingham Railway

Opened in 1868 - absorbed July 1891 into Metropolitan Railway

1891 ISSUE 2D

McCorquodale, 50 sheets of 12 (2 rows of 6) printed



sheet reconstruction, position 6 with defective transfer, positions 1 to 3 and 7-12 are from the same sheet

Former A. & B. Railway Stations while Metropolitan Railway

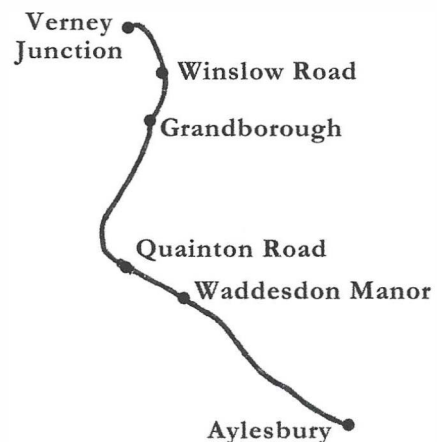


Verney Station (1898)

The 21.5 mile line connected Aylesbury and Verney Junction with intermediate stations at Waddesdon Manor, Quainton Road, Grandborough, and Winslow Road. (South Britain map 117)



Aylesbury 1902 arrival postmark



Brecon & Merthyr Railway

1891 / 1920 Issues: The 2d was Lithographed by Bemrose & Sons Ltd. of Derby in sheets of 60 stamps (6 rows of 10 stamps), perforated 11 but margins let imperforate. The first printing is on bluish white paper, later printing is on white paper.



proof, top right corner block of four un gummed and cancelled, imperf margins from unique sheet, ex de Lacy-Spencer



block of four as issued imperf margin at foot



2d



2d



2d "cancelled"



2d used



3d on 2d in manuscript



4d on 2d stenciled



4d on 2d, different "BRECON" cancels



Cambrian Railways

The 1891 to 1907 printings by Messrs. Woodhall & Minshull of Oswestry were of a unique design with a trellis background. From 1912, McCorquodale & Co. Ltd. of Glasgow, was employed and a design of the standard type replaced the earlier design.

1891 Issue 2d, perf $12\frac{1}{2}$



Die I
white spot in 2

1895 Issue 2d, perf 12



Die II
no white spot in 2

1907 Issue 2d, perf 11



no spots in 2



blotch of white
in foot of 2

1912/ 1914 Issue 2d



broken O in POST

1920 (Jun) Issue 3d



1920 (Sep) Issue 4d



Central Wales & Carmarthen Junction Railway

1891 Issue 2d, McCorquodale of London printers, 120 stamps were issued and it is thought that no stamps were used until after the amalgamation with L.N.E.R. on July 21, 1891.



the only known example
ex Klempka

Central Wales & Carmarthen Junction Railway

1891 Issue 2d, McCorquodale of London printers, 120 stamps were issued and it is thought that no stamps were used until after the amalgamation with L.N.E.R. on July 21, 1891.



the only known example
ex Klempka

1891 (Feb) Issue 2d, McCorquodale of
Glasgow printers



only unused example known
ex Klempka

Dumbarton & Balloch Railway

1913 Issue 2d: Printed by McCorquodale & Co. Ltd of Glasgow in sheets of 12 stamps (3 by 4).

Scotland



East And West Junction Railway

Printed by Bemrose & Sons Ltd, of Derby in sheets of 24 stamps (2 panes of 12 stamps).

1893 Issue 2d



1899 Issue 2d



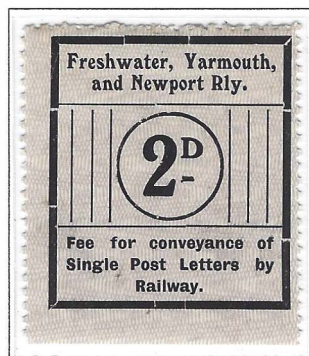
1899 Issue 2d



complete pane of 12

Freshwater, Yarmouth and Newport Railway

1913 Issue 2d



1923 Issue 4d on 3d handstamped surcharge, underlying 3d stamp printed by H. Blacklock & Co. Ltd. of Manchester.



Furness Railway

Printed by McCorquodale & Co. Ltd, of Newton-le-Willows in sheets of 10 stamps (2 rows of 5), rouletted in green.

"RAILWAYS." (with period)

1891 Issue 2d



1893 Issue 2d

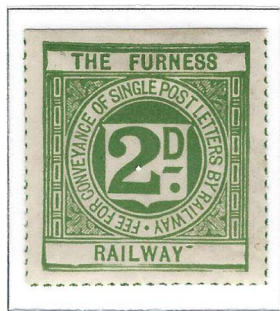


"RAILWAY" (no period)

1897 Issue 2d (no control numbers)



1897 Issue 2d (with control numbers)



(no "THE") and "RAILWAY." (with period)

1900 Issue 2d



Glasgow, Barrhead & Kilmarnock Railway

1900 Issue 2d

Printed by McCorquodale & Co. Ltd. of Glasgow in sheets of 12 (3 rows of 4). Sixth printing of 1900.



imperforate sheet, with full gum
unrecorded by Ewen, Jackson or de Lacy-Spencer, possibly a proof sheet

Great Central Railway Company

Stamps were printed by H. Blacklock & Co. Ltd. of Manchester.
The first issue was printed in July 1897.

1897 (Jul) Issue 2d,
faint guidelines around
each stamp, 1727 were
issued.



1898 (Jun) Issue 2d,
guide liens have been
removed, 1596 stamps
were issued.



1920 (Sep) Issue 4d on 3d manuscript surcharge (various styles)



1922 Issue 4d (minor shade variations)



1920

'3' hand-stamped in violet ink on 16th printing 2d.

V. Rare, but possibly
a Wilson production.

Only one other
stamp recorded
by Capt. Jackson.



Of this surcharge, this is the only known stamp with the '3d' in black ink. Two similar items in red ink also exist.

?

Great Central & Midland Joint Committee

1921 Issue handstamped 4d on 3d: The underlying 3d stamps printed by Henry Blacklock & Co. Ltd. of Manchester and London in sheets of 12 stamps, clean perforated 11 and rough perforated 11. The handstamped surcharge is a fancy "4" numeral on top two rows and a plain "4" numeral on lower two rows. The stamps were surcharged using the same form as that used for the surcharges made for the Great Central & North Staffordshire Railway Committee



Great Central & North Staffordshire Railway Committee

1921 Issue handstamped 4d on 3d: The underlying 3d stamps printed by Henry Blacklock & Co. Ltd. of Manchester and London in sheets of 12 stamps, clean perforated 11 and rough perforated 11. The handstamped surcharge is a fancy "4" numeral on top two rows and a plain "4" numeral on lower two rows.



clean perforated 11

rough perforated 11



Great Central & North Staffordshire Railway Committee

1925 Issue handstamped 4d in blue on 3d: The underlying 3d stamps printed by Henry Blacklock & Co. Ltd. of Manchester and London in sheets of 12 stamps. The surcharge was printed in blue from a new setting with normal "4" numerals.



1922?

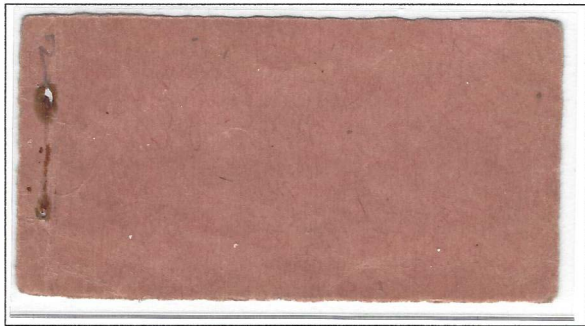
4d. bright green



Three types of '4'
used.

Hull & Barnsley Company

1920 Issue 4d: Lithographed in Hull, printed in sheets of 12 made up into booklets with purple covers.



Partial contents of an exploded booklet.

Lancashire & Yorkshire Railway

Stamps were printed by H. Blacklock & Co. Ltd. of Manchester.

1897 Issue 2d, no guide lines, no control numbers, 2208 issued.



1898 Issue 2d, with large control numbers 1-3750.



1904 (Jun) Issue 2d, control numbers with small figures. Control numbers 13755- 1875.



1908 Issue 2d, control numbers with small figures. Control numbers 23761 to 28764.



1920 (Jan) Issue violet "THREE PENCE" handstamped surcharge on 2d

Stamps with control numbers 50017 to 53772 were issued, later numbers exist but are remainders.



1920 Issue 3d

Stamps with control numbers 6013 to 11934.

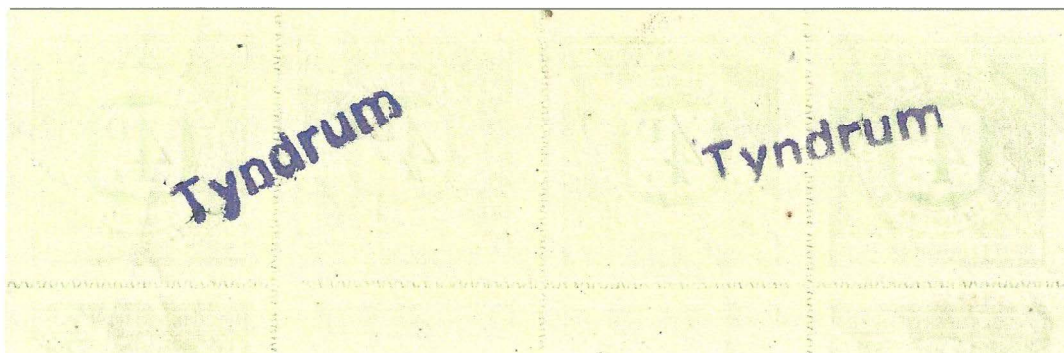
London, Chatham & Dover Railway

1891 / 1899 Issue 2d: 2d stamps printed by the company in sheets of 12 stamps. Wide margins, various papers, perforations and gum were tried.



London & North Eastern Railway, North British Section

circa 1924 Issue 4d



sheet of 12 stamps, zigzag roulette in color

"Tyndrum" station (Scotland) backstamp struck twice on top row stamps as shown

London & South Western Railway

Printed by Waterlow & Sons,
Ltd, London in sheets of 12.

1900 Issue 2d



1920 Issue 4d Provisional



1921 Issue 4d



manuscript "Surcharge 2d" on 2d stamp
the only reported example, possibly an essay

London & South Western Railway

"Station" Ovals



Sunningdale



Breamore



Cobham & Stoke
D'Abernon



Medstead



Kingston On
Thames
/ Surbiton S^{TR}



Bagshot



Haslemere



Witley



Broadstone
Jun^c



Brookwood

London & South Western Railway



Christchurch



Sidmouth Jct.
(Apr 12, 1906)



Seaton



Bude



Ring Wood



Beer Alston
(Bere Alston)



Overton



Whitstone &
Bridgerule



Fratton



Fratton
(Feb 9, 1897)



Fratton
(May 25, 1903)



Witley



Winchester
Cancelled
(Sep 1917)



Christchurch Cancelled
(Dec 3, 1912)



Feltham

Macclesfield Committee

1891 Issue 2d (first printing): Printed by Henry Blacklock & Co. Ltd. of Manchester in sheets of 6 stamps, each with an imperf edge, 102 issued.



position 1



position 2



position 3



position 4

1891 Issue 2d (second printing): Printed in sheets of 12, the second printing in June 1899 are in an olive green shade, 286 issued.



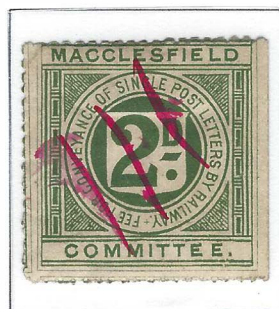
position 1



position 2



position 3



position 6



position 9

Macclesfield Committee

1894 Issue 2d (third printing): The stamps of the third printing, May 4, 1894, are in a deep green shade and have faint outer frame lines, 780 issued.



1899 Issue 2d (fourth printing): The stamps of the fourth printing in January 1899 are in green shade and have an extra outer frame line added, 720 issued.



Bottom half of
sheet, types 1-6.

Manchester, South Junction & Altrincham Railway

All Manchester, South Junction & Altrincham Railway stamps were printed by H. Blacklock & Co. Ltd. of Manchester. Although company records revealed several different printings, other than the three transfer types, and a change in perforation in 1906, these can only be sorted in most cases because the records include the control numbers assigned to each printing.

1891 (Jan) Issue 2d,
transfer I, no outer
guide lines, small "N" in
"CONVEYANCE,"
distributed in panes of
12 (2 by 6) with imperf
sheet margins, 276
stamps were issued.



1891 (Dec) Issue 2d,
transfer I, issued in
panes of 25 (5 by 5),
stamps paler shade of
green, 300 stamps
were distributed.



1894 (Aug) Issue 2d,
transfer II, guidelines
are faint, control
numbers 501-1000.



1895 (Oct) Issue 2d,
transfer II, control
numbers 1001-2000



1898 (Jun) Issue 2d,
transfer II, guidelines
are faint, control
numbers 2001-3000.



1899 (Dec) Issue 2d,
transfer III with
more defined guide
lines, control numbers
3001-4000.



Manchester, South Junction & Altrincham Railway

Stamps were printed by H. Blacklock & Co. Ltd. of Manchester.

1895 Issue 2d

Transfer II, faint guide lines around stamps, printed in sheets of 25. Three printings are known from company records: 1894 (Aug) printing, control (#501 to 1000), 1895 (Oct) printing (control #1001 to 2000) and 1898 (Jun) printing (Control #2001 to 3000)



complete sheet of 25, control numbers 1651-1675

Manchester, South Junction & Altrincham Railway

Stamps were printed by H. Blacklock & Co. Ltd. of Manchester.

1898 Issue 2d

Transfer II, faint guide lines around stamps, printed in sheets of 25



complete sheet of 25, control numbers 2026-2050

Manchester, South Junction & Altrincham Railway

1902 (Apr) Issue 2d, transfer III, more defined guide lines (4001-6000)



1910 (Jun) Issue 2d, transfer III, now perf $11\frac{1}{2}$ instead of 12 (7001-8000)



1914 Issue 2d, transfer III, much clearer lines, perf $11\frac{1}{2}$ (8001-9000)



Manchester, South Junction & Altrincham Railway

1919 Issue 2d, transfer III, perf 11, control numbers (A1-10000)



1920 (Jan) Issue 3d on 2d manuscript surcharge



1920 (Sep) Issue 4d on 2d manuscript surcharge



1920 (Jun) Issue 4d on 2d handstamped surcharges (different styles)



February, 1920

Handstamped in violet.

Control numbers:-
A521 to A548
known.



Only control
numbers from
3 sheets known.

On 1st September, 1920 the fee went up again to 4d. This again occasioned emergency measures. Once again pen and ink were used. To start with the stamps surcharged with 3d. in ink were the first to be used, followed quickly by the old unsurcharged 2d.

4d. in black on
3d. black on 2d.



Control numbers
A383 to A394
known (2 sheets)

4d. in red on
3d. in black on 2d.



Control numbers
A463 to A481
known (3 sheets)

4d. in red on
unsurcharged 2d.



Control numbers
A607 to A629
known (3 sheets)

Unofficial surcharges.

Sheet A551-A600 - This was sold to a dealer & A. Wilson handstamped stamps with a '4' in violet ink.

Half-sheet A626-A650 came into the hands of A. Wilson who handstamped it with a '4' in black purple ink.



Metropolitan & Great Central Joint Committee

1930 Issue 3d Green: Printed by Henry Blacklock & Co. Ltd.
of Manchester in sheets of 12 (4 by 3), 1600 stamps printed.



control numbers A/1273 - A/1284

Metropolitan & London & North Eastern Railways

1928 Issue 3d Green: Printed by Henry Blacklock & Co. Ltd.
of Manchester in sheets of 12 (3 by 4), 240 stamps printed.



control numbers 433-444

Northampton & Banbury Junction Railway

Opened in 1872 - taken over in July 1910 by Midland Junction Railway

1891 ISSUE ~~2D~~

Waterlow & Sons, sheets of 12 (4 rows of 3)



Banbury 1898 arrival postmark

North Staffordshire Railway

Cancels



14/9/92 - Crewe

12/10/93

Leek - 12/8/08



Sudbury
N.S. Ry



Alsager
N.S. Ry



Pipegate
N.S. Ry



Okamoor
N.S. Ry



Madeley (Road)



Biddolf (1909)
N. STAFF. Ry.

North Staffordshire Railway

1891 Issue 2d (first printing): Type I with three frame lines at top and bottom. Printed by Allbutt & Daniel, of Hanley, in sheets of 20 stamps (4 rows of 5 stamps), perforated 12, bright green.



North Staffordshire Railway

1891 Issue 2d (second printing): Type I with three frame lines at top and bottom. Printed by Allbutt & Daniel, of Hanley, in sheets of 20 stamps (4 rows of 5 stamps), perforated 12, olive green.



North Staffordshire Railway

1897 Issue 2d (third printing): Type I with three frame lines at top and bottom. Printed by Allbutt & Daniel, of Hanley, in sheets of 20 stamps (4 rows of 5 stamps), perforated 11, grey green.



North Staffordshire Railway

1899 Issue 2d: Type II with four frame lines at top and bottom, stop after "STAFFORDSHIRE". Printed by Allbutt & Daniel, of Hanley, in sheets of 8 stamps (2 rows of 4 stamps), perforated 11, yellow green.



North Staffordshire Railway

1899 Issue 2d: Type II with four frame lines at top and bottom, stop after "STAFFORDSHIRE". Printed by Allbutt & Daniel, of Hanley, in issued sheets of 20 stamps (4 rows of 5 stamps), perforated 11, dark blue green.



imperforate between

North Staffordshire Railway

1902 Issue 2d: Type IV with second bar in left pillar cut in half horizontally. Printed by Allbutt & Daniel, of Hanley, in issued sheets of 20 stamps (4 rows of 5 stamps), perforated 10, sage green.



North Staffordshire Railway

1920 Provisional Issue 3d on 2d: "3d" surcharge in blue crayon. Underlying 2d stamp printed by McCorquodale & Co., Ltd of Newton-le-Willows.



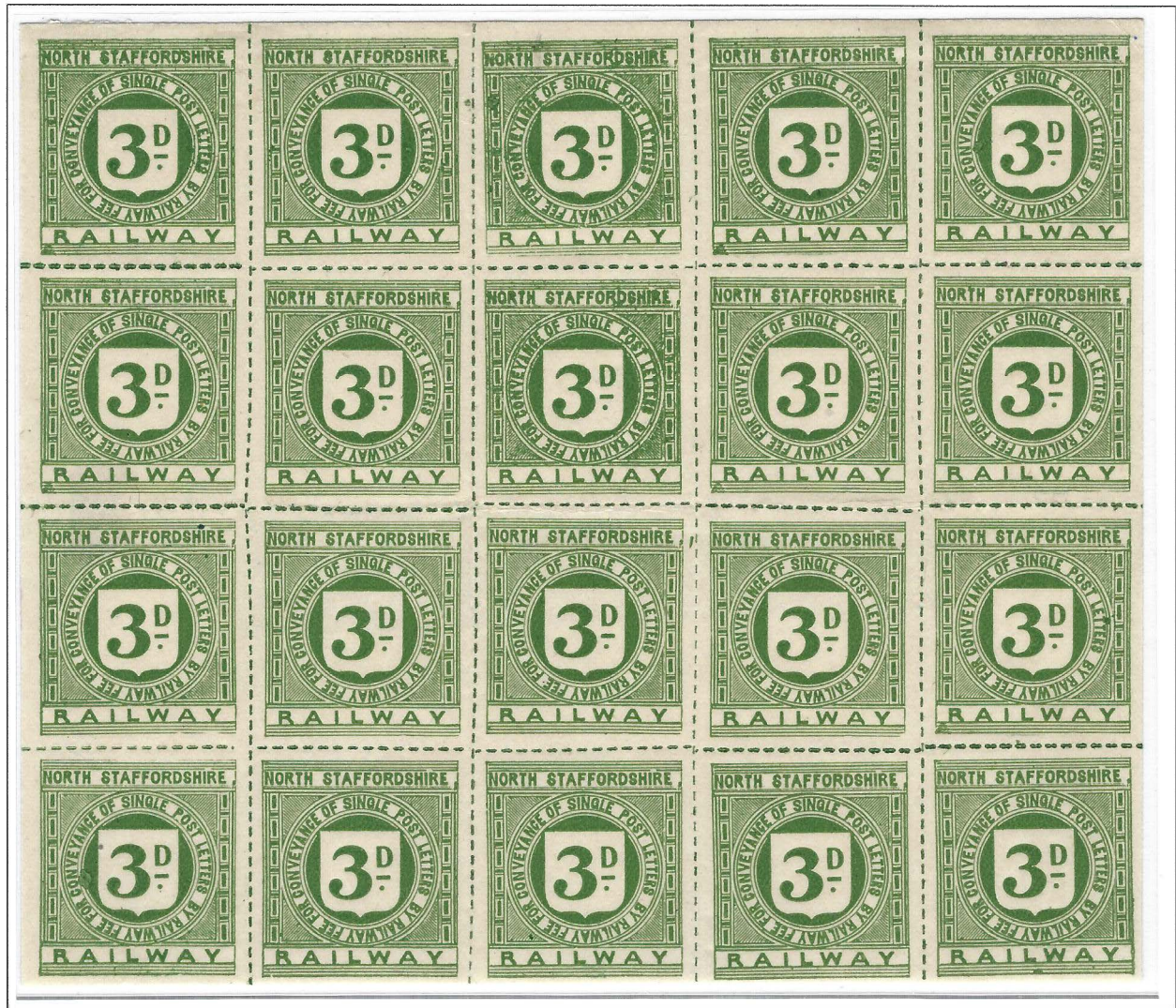
1920 Provisional Issue 3d on 2d: "FEE 3d" surcharge in red ink.



Bosley Station cancels

North Staffordshire Railway

1920 Issue 3d: Printed by McCorquodale & Co., Ltd of Newton-le-Willows in sheets of 20 stamps (4 rows of 5 stamps), rouletted in color.



North Staffordshire Railway

1920 Provisional Issue 4d on 3d: "4" surcharge in red crayon.



1920 Provisional Issue 4d on 3d: "4" surcharge in black ink.



1920 Provisional Issue 4d on 3d: "4" handstamped surcharge in purple.

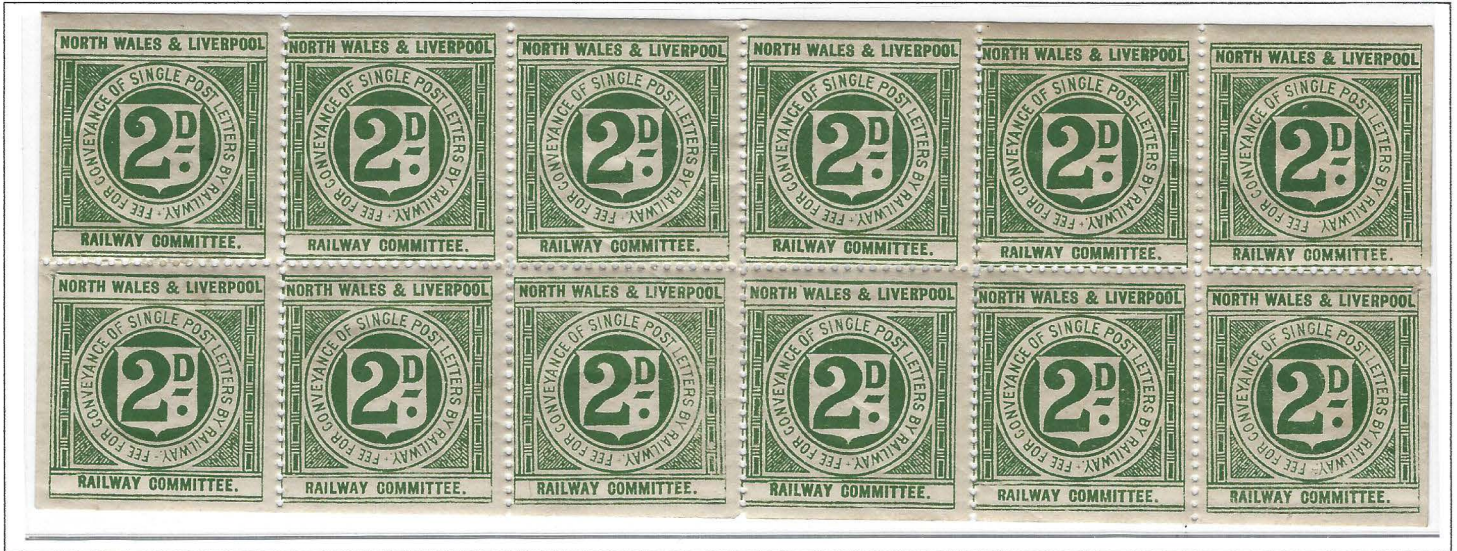


1920 Provisional Issue 4d on 3d: "4^D" surcharge in blue crayon.



North Wales & Liverpool Railway Committee

1896 (July) Issue 2d (first printing): Printed by Henry Blacklock & Co. Ltd. of Manchester, delivered to the company in sheets of 12 stamps, 120 stamps issued.



1898 (September) Issue 2d (second printing): Printed by Henry Blacklock & Co. Ltd. of Manchester delivered to the company in sheets of 12 stamps, 240 stamps issued.



sheet above type arrangement:

4-5-6-4-5-6

4-5-6-4-5-6

printed in green

sheet at left type arrangement:

1-6-3

4-5-6

1-5-3

4-5-6

printed in deep green

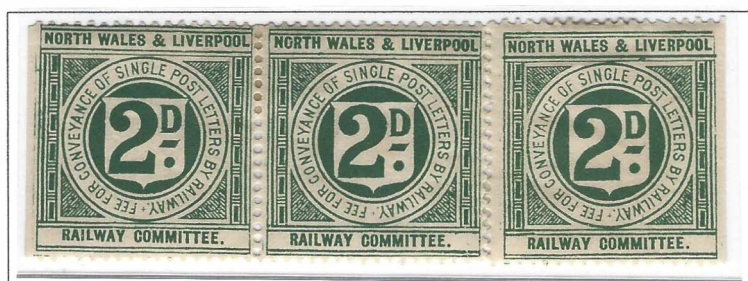
North Wales & Liverpool Railway Committee

1899 (April) Issue 2d (third printing): Printed by Henry Blacklock & Co. Ltd. of Manchester, delivered to the company in sheets of 12 stamps, 600 stamps.

sheet reconstruction in blue green



top half, types 1-3-3 / 4-5-6



middle row, types 1-6-3



bottom row, types 4-5-6

North Wales & Liverpool Railway Committee

1899 (April) Issue 2d (third printing): Printed by Henry Blacklock & Co. Ltd. of Manchester delivered to the company in sheets of 12 stamps, 240 stamps issued.



two panes that are appear to be from the same press sheet (of 24 or 36 stamps)

both are same type arrangement as the reconstructed pane on previous page, 1-3-3, etc

The partial pane at left is illustrated in H. L'Estrange Ewen's book on page 218 where it is incorrectly identified as first printing. It has his pencil notation on reverse that he purchased it in March 23, 1901 and I believe it to be from the third printing.

North Wales & Liverpool Railway Committee

1896 / 1899 Issue 2d



imperforate between, type 4-5
the only reported example



14 April 1898 cancel
type 5, date proves first printing



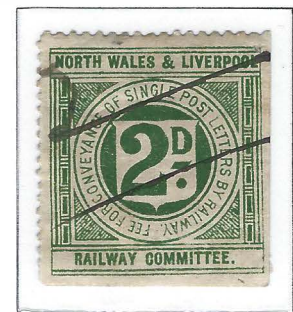
type 4
1st printing



type 5
1st printing



type 6
1st printing



type 6
2nd printing

Oldham, Ashton & Guide Bridge Railway

1891 (January) Issue 2d (first printing): Printed by Henry Blacklock & Co. Ltd. of Manchester, delivered to the company in sheets of 6 stamps, 102 stamps printed.



1891 (June) Issue 2d (second printing): Printed by Henry Blacklock & Co. Ltd. of Manchester delivered to the company in sheets of 6 stamps, 286 stamps printed.



The first two printings were both printed from Transfer 1 with faint outer frame lines. Printings 3 and 4 were printed from Transfer 2 with thick outer frame lines.

Oldham, Ashton & Guide Bridge Railway

1898 (November) Issue 2d (third printing): Printed by Henry Blacklock & Co. Ltd. of Manchester, delivered to the company in sheets of 12 (3 by 4), 240 stamps printed.



The first two printings were both printed from Transfer 1 with faint outer frame lines. Printings 3 and 4 were printed from Transfer 2 with thick outer frame lines.

Oldham, Ashton & Guide Bridge Railway

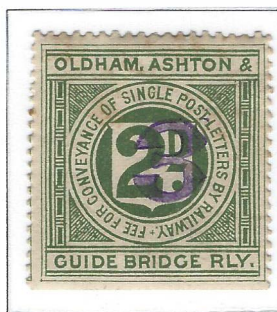
1899 (April) Issue 2d (fourth printing): Printed by Henry Blacklock & Co. Ltd. of Manchester in sheets of 12 (3 by 4), 600 stamps printed many of which were later surcharged.



The first two printings were both printed from Transfer 1 with faint outer frame lines. Printings 3 and 4 were printed from Transfer 2 with thick outer frame lines.

Oldham, Ashton & Guide Bridge Railway

1920 (January) Issue 3d on 2d of the third printing.
Handstamped surcharge "3" in purple.



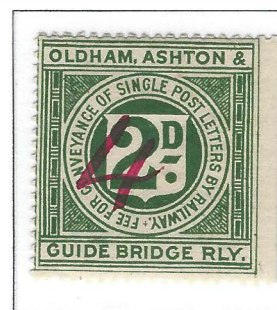
1920 (September) Issue 4d on 2d of the fourth printing.
Surcharged "4" in red ink.



position 1



position 4



position 6



position 8



position 11

1920 (September) Issue 4d on 2d of the fourth printing.
Handstamped "4" surcharge in purple.



Pembroke & Tenby Railway

1893 Issue 2d: Printed by McCorquodale & Co. Ltd of London in sheets of 12 stamps (6 by 2), controls 1001 - 2000.



a remaindered sheet, controls 1853- 1864



showing offsets, controls 1556 - 1558



reduced image of front

Oldham, Ashton & Guide Bridge Railway

1920 (January) Issue 3d on 2d of the fourth printing. Surcharged in black (top row) changing gradually to red ink with "3^d" on each stamp.



Oldham, Ashton & Guide Bridge Railway

1920 (January) Issue 3d on 2d of the third printing.
Surcharged in red ink "3^d" on each stamp.



only known full sheet surcharged on the third printing, ex Jackson

Oldham, Ashton & Guide Bridge Railway

1920 (January) Issue 3d on 2d of the fourth printing.
Surcharged in red ink "3" (no "D") on each stamp.



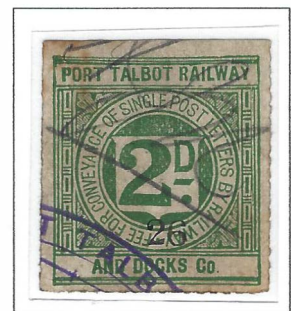
February 1901 Issue 2d: Printed by McCorquodale & Co. Ltd. of London in sheets of 24 stamps arranged in four rows of six. According to Ewen, the stamps were delivered on October 28, 1898 but were not issued until February 28, 1901 when twelve stamps were sent to each station. The stamps were rouletted on four sides except stamps in the top row and at the right side that were issued imperforate on that edge. Control numbers were used and 500 stamps were issued.



control #435
imperf at top



control #329-330 / 335-336
right pair imperf at right



control #26
clerk's pencil
initials
and oval cancel



control #409 to 432
imperforate at top and right

ca. 1918 Issue 2d: Overprint "PORT TALBOT RLY. / & DOCKS CO." in red on Great Western Railway 1911 issue 2d. These had been printed by Waterlow Bros. & Layton, Ltd. of London in sheets of 60 stamps, perforated 12. Four sheets of stamps, bearing control numbers 167461 - 167700 were overprinted. The half sheet shown below and on next page together comprise the complete first sheet overprinted.

PORT TALBOT RLY.

& DOCKS Co.



top half of the first sheet of 60 to be overprinted, rows 1 to 5 (bottom half on next page)
control numbers 167461 to 167490



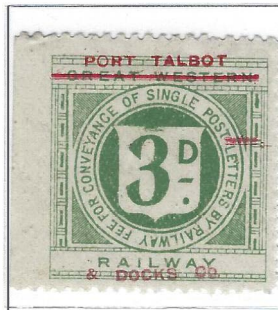
bottom half of the first sheet of 60, rows 6 to 10, control numbers 167491 to 167520
 two stamps show partially doubled "PORT TALBOT RLY" at top
 the two center stamps in row 9 as shown below at 200% of original
 ex Jackson



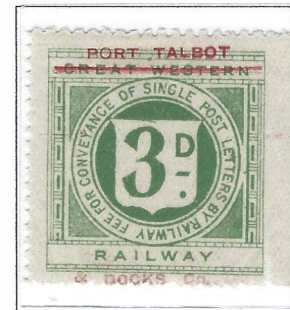
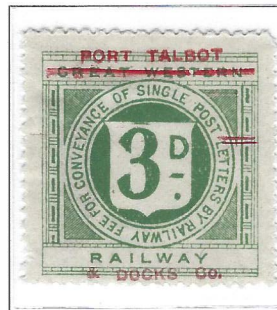
1920 Issue 3d: Overprint "PORT TALBOT RLY. / & DOCKS CO." in red on Great Western Railway 1920 issue 3d. These had been printed by Waterlow Bros. & Layton, Ltd. of London in sheets of 60 stamps, perforated 12. Four sheets of stamps were overprinted.

PORT TALBOT RLY.

& DOCKS CO.



imperf at left



imperf at right

1920 Issue 4d: Overprint "PORT TALBOT RLY. / & DOCKS CO." in red on Great Western Railway 1920 issue 4d. These had been printed by Waterlow Bros. & Layton, Ltd. of London in sheets of 60 stamps, perforated 12. Four sheets of stamps were overprinted.

PORT TALBOT RLY.

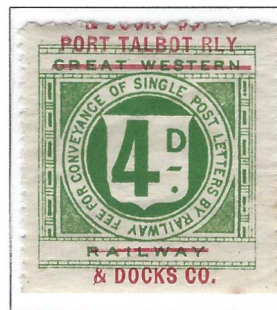
& DOCKS CO.



imperf at left



imperf at right



imperf at foot



used example
2 known used

Rhondda & Swansea Bay Railway

1891 Issue 2d: Printed by Waterlow & Sons Ltd. of London
in sheets of 24 stamps (6 by 4), 1,000 stamps issued.



Rhondda & Swansea Bay Railway

1920 Issue 3d on 2d surcharge in purple: Stenciled surcharge in purple on circa 1911 issue 2d printed by Waterlow Bros. & Layton of London in sheet of 60 stamps.



top six rows of sheet, controls 2826 - 2851

Rhondda & Swansea Bay Railway

1920 Issue 3d on 2d surcharge in purple: Stenciled surcharge in purple on circa 1911 issue 2d printed by Waterlow Bros. & Layton of London in sheet of 60 stamps.



bottom four rows of sheet, controls 2802 - 2815

Rhymney Railway

1891 2d



1920 3d



Sep 1920 4 on 3d



red ink 4d on 3d



red pencil 4d on 3d



blue pencil 4d on 3d

Southern Railway

1925 Issue 4d: Printed by Waterlow & Sons Ltd. of London in sheets of 12 stamps (3 by 4) on grey paper.



(Southern & London Midland & Scottish Railway Co.)

Somerset & Dorset Joint Railway

1923 Issue 4d

Printed by McCorquodale & Co. Ltd. of London in sheets of 12 (3 rows of 4). One thousand stamps were issued.



Stratford-Upon-Avon & Midland Junction Railway

1920 Issue 3d Provisional

1920 Issue 3d on 2d Manuscript Provisional: Below is a part sheet of the 1910 issue 2d, printed by McCorquodale & Co. Ltd of London with manuscript surcharge "3" on each stamp on the top three rows. The two stamps in the fourth row have no surcharge or control numbers but do bear a manuscript "Pattern" in ink. The whole sheet with manuscript "Specimens" in blue crayon in a different hand. This is an archival essay for the 3d stamp shown on following page.



3d on 2d surcharge / unsurcharged 2d composite "Specimens" sheet
probably supplied to printer as a pattern when ordering the new 3d stamps
the only reported examples of the manuscript surcharge

Stratford-Upon-Avon & Midland Junction Railway

1920 Issue 3d

1920 Issue 3d: Printed by McCorquodale & Co. Ltd of London in sheets of twelve stamps, perforated 11. Lacy-Spencer reports 500 stamps were issued while earlier Jackson had stated that 200 were issued.



complete sheet
the first sheet printed, control numbers 1 to 12

ex Jackson

Stratford-Upon-Avon & Midland Junction Railway

1910 Issue 2d

1900 Issue 3d: Printed by McCorquodale & Co. Ltd of London, 480 stamps in sheets of twelve.



1920 Issue handstamp 4d on 3d Provisional



Wigan Junction Railway

1900 (August) Issue 2d (first printing): Printed by Henry Blacklock & Co. Ltd. of Manchester, printed in sheets of 12 stamps (4 rows of 3) but delivered to the company in sheets of 6 stamps, 240 stamps issued.



1904 (July) Issue 2d (second printing): An additional 240 stamps were printed in a second, and final, printing as before but in a more yellowish green shade.

