

First Period (Feb 1, 1891 to Jan 14, 1920)
2d railway fee



11 October 1898 Wrexham Central Station to the mails at Wrexham, 1d postage
12 October 1898 London SE arrival, Cheshire Lines Committee 2d stamp, imperf at top and right
"W.M. & C.Q Ry Parcel Dept." (Wrexham Mold & Connah Quay Railway) oval and cross cancels

First Period (Feb 1, 1891 to Jan 14, 1920)
2d railway fee



14 April 1898 to the mails at Stockwell (London) addressed to Norwood SE (London), 1d postage endorsed to "City & South London Rwy" with Ewen's blue crayon "2d" railway fee paid in cash
the only reported example

City and South London Railway was the first successful underground "tube" railway in the world. Founded in 1890, the line had six stations and ran for 3.2 miles, via a pair of tunnels between the City of London and Stockwell, passing under the River Thames. It was also the first major railway to use electric traction locomotives.

The railway was not party to the agreement between the General Post Office and the railway companies regarding railway letter mail fees. It appears this use was tolerated although not authorized.

First Period (Feb 1, 1891 to Jan 14, 1920)
2d railway fee



14 April 1898 Carnoustie to the mails in London, 1d postage
manuscript station name postmark on Dundee & Arbroath Joint Railway 2d first printing
15 April 1898 London N.W. arrival postmark



12 October (Arbroath) to the mails at Dundee, 1d postage
Dundee & Arbroath Joint Railway 2d first printing with manuscript cross cancel

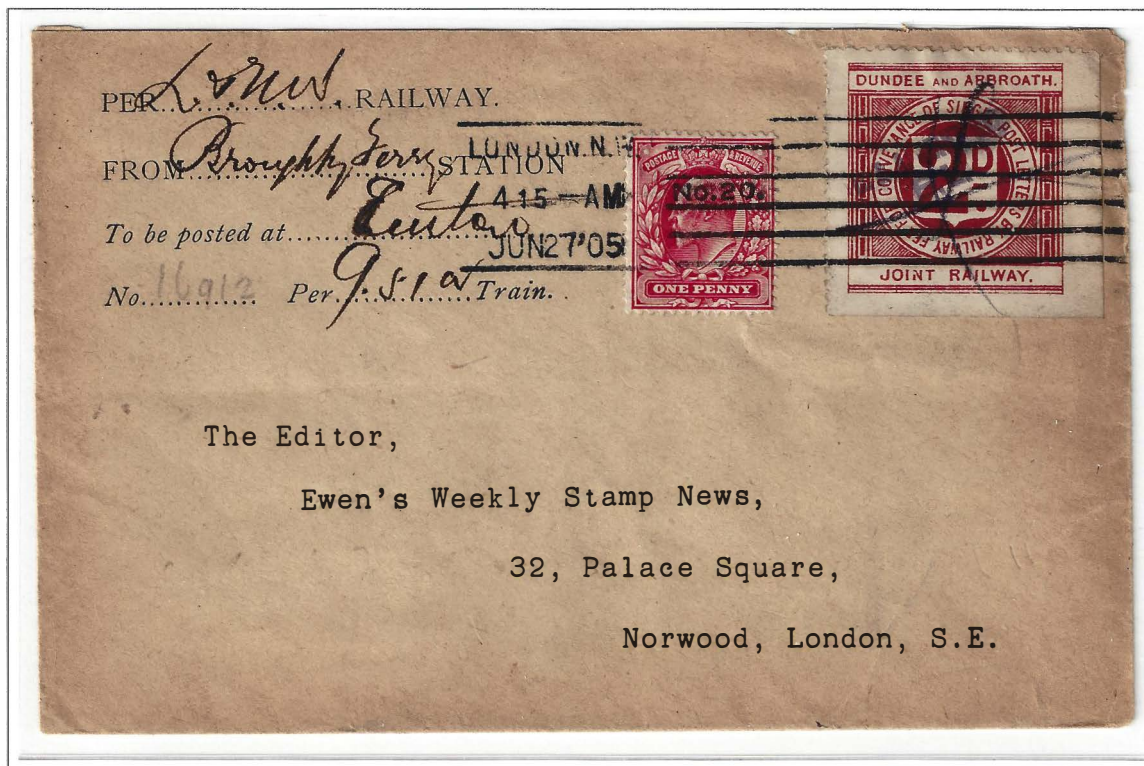
Dundee & Arbroath Joint Railway

Ewen Covers

+ London & North Western Railway

Conjunctive Use

First Period (Feb 1, 1891 to Jan 14, 1920)
2d railway fee



7 June 1905 Broughty Ferry to the mails at Euston Station (London), 1d postage
Dundee & Arbroath Joint Railway 2d second printing (1899) with manuscript cross cancel
conjunctive use with the London & North Western Railway to the mails at London
7 June 1905 London NW entry postmark, London SE arrival backstamp



First Period (Feb 1, 1891 to Jan 14, 1920)
2d railway fee

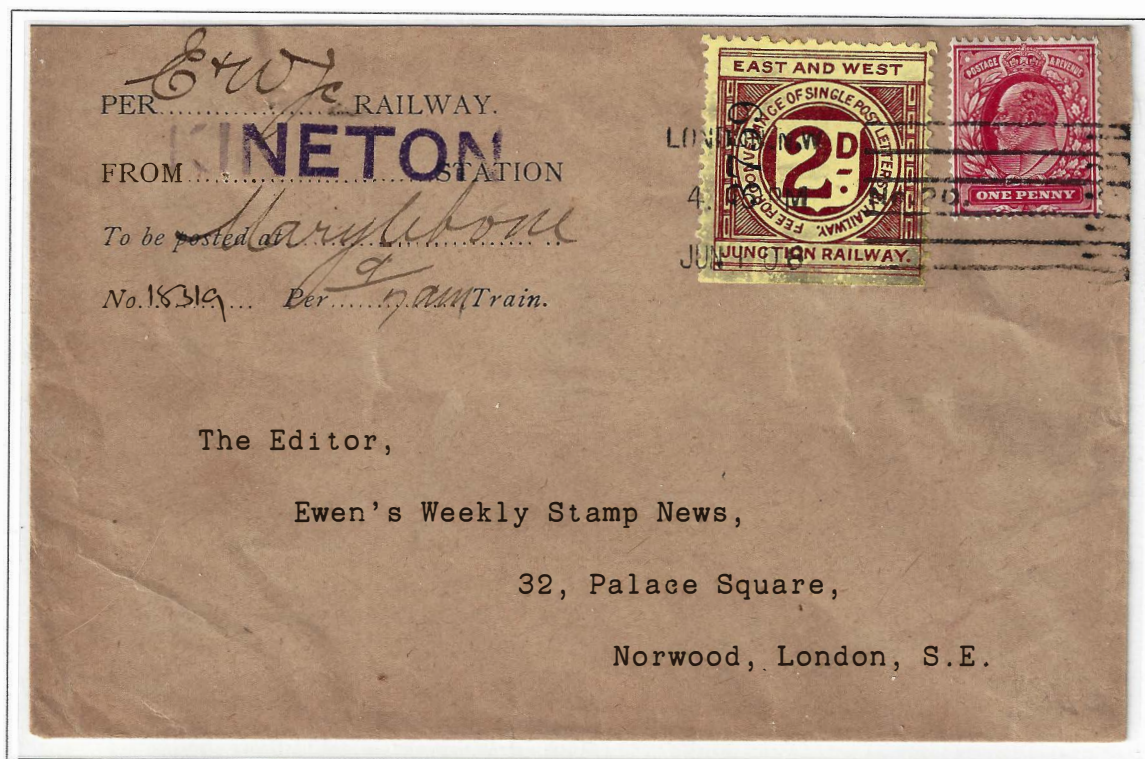


11 October 1898 Kington to the mails at Blisworth, 1d postage
East and West Junction Railway 2d stamp
Blisworth backstamp and stamps with Northampton transit postmark two hours later

First Period (Feb 1, 1891 to Jan 14, 1920), 2d railway fee



26 April 1905 Byfield to the mails at London N.W., 1d postage
East and West Junction Railway 2d stamp, Byfield handstamp cancel with manuscript date



1 June 1906 Kineton to the mails at London, 1d postage
East and West Junction Railway 1899 issue 2d stamp

First Period (Feb 1, 1891 to Jan 14, 1920)
2d railway fee



11 October 1898 used to Norwood (London) SE, 1d postage
The Furness Railway 1897 issue 2d railway stamp with manuscript cancel
entered the mails at Carnforth

Glasgow & South Western Railway

Ewen Covers

+ Midland Railway

Conjunctive Use

First Period (Feb 1, 1891 to Jan 14, 1920)
2d railway fee



21 April 1898 Johnstone Station South Norwood (London, SE), 1d postage
Glasgow & South Western Railway Station oval cancel and blue cross on 2d stamp
conjunctive use by Glasgow & South Western Railway to Carlisle
by Midland Railway from Carlisle to London

First Period (Feb 1, 1891 to Jan 14, 1920)
2d railway fee



27 June 1905 Kirkgunzeon to the mails at Dumfries, 1d postage
Glasgow & South Western Railway 2d stamp and 1d postage with manuscript cross cancels

Glasgow & South Western Railway

Ewen Covers

+ Midland Railway

Conjunctive Use

First Period (Feb 1, 1891 to Jan 14, 1920), 2d railway fee



11 February 1910 Auchincruive to the mails at Norwood (London, SE), 1d postage
Auchincruive crossed cancels on Glasgow & South Western Railway 2d stamp
conjunctive use by Glasgow & South Western Railway to Carlisle
then Midland Railway to Pancras and possibly South Eastern & Chatham Railway to Kings Cross



22 April 1911 (Glasgow) to the mails at St. Pancras Station (London, NW), 1d postage
Glasgow & South Western Railway 2d stamp and 1d postage with manuscript cross cancels
conjunctive use by Glasgow & South Western Railway to Carlisle
by Midland Railway from Carlisle to London

First Period (Feb 1, 1891 to Jan 14, 1920)
2d railway fee



1 June 1905 Storton Station via Marylebone Station to the mails at London NW, 1d postage
Great Central Railway Company 2d stamp and 1d postage with red manuscript cross cancels

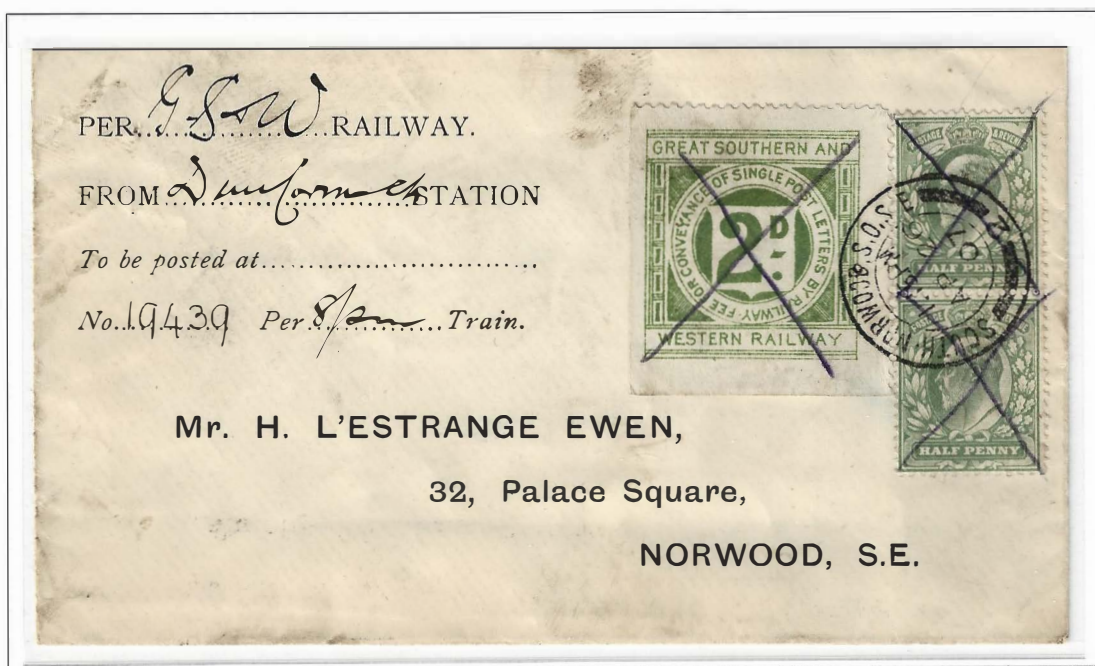
First Period (Feb 1, 1891 to Jan 14, 1920)
2d railway fee



14 June 1905 Kilmacow to the mails from Euston Station to London, NW, 1d postage
Great Southern And Western Railway 2d stamp

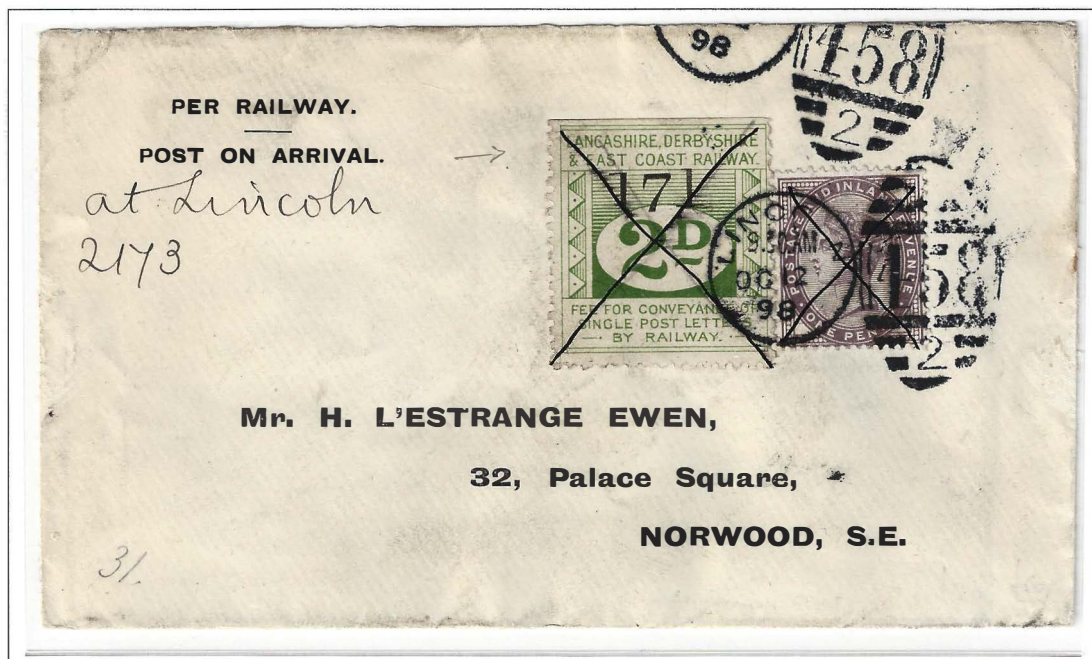


on back (reduced)



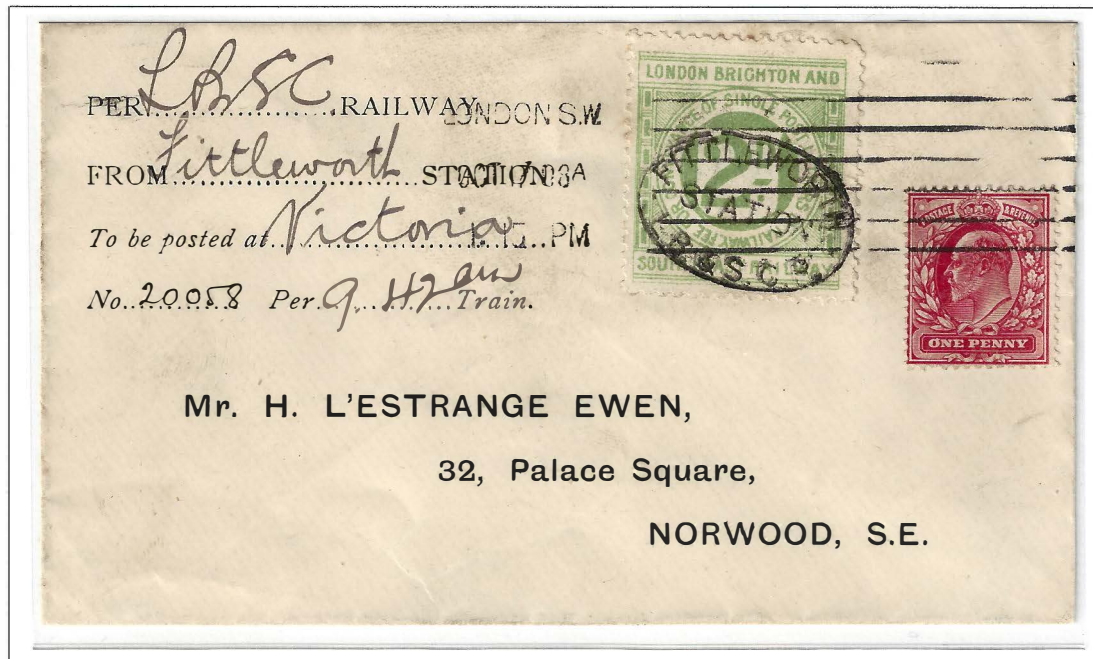
26 April 1907 Duncormick to the mails via Euston Station to South Norwood S.O.S.E, 1d postage
Great Southern And Western Railway 2d stamp and their "Paid From Duncormick" label on back

First Period (Feb 1, 1891 to Jan 14, 1920)
2d railway fee



12 October 1898 to the mails at Lincoln, 1d postage
manuscript cross cancels, Lancashire, Derbyshire & East Coast Railway 2d stamp, first printing

First Period (Feb 1, 1891 to Jan 14, 1920)
2d railway fee



11 October 1908 Fittleworth Station to Victoria Station and the mails at London SW, 1d postage
London Brighton & South Coast Railway 2d stamp with Fittleworth Station oval cancel

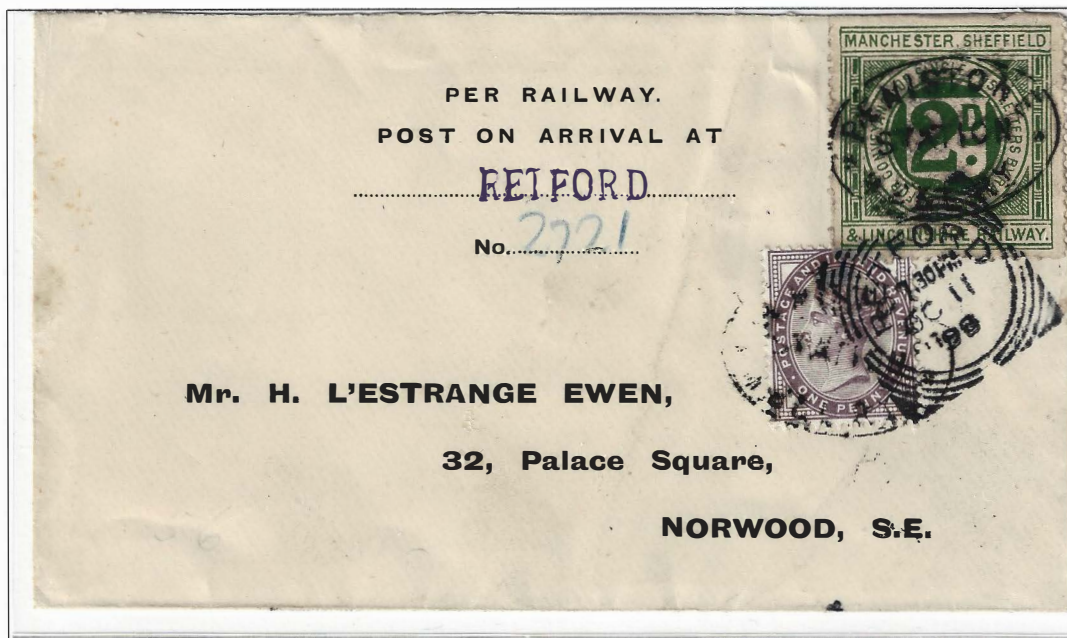
First Period (Feb 1, 1891 to Jan 14, 1920)
2d railway fee



20 September 1906 Hornschurch Station to the mails at Norwood SE, 1d postage
London, Tilbury & Southend Railway 2d stamp, 1905 issue (control 1/7773)
Hornchurch straight line cancels and datstamps, Norwood SE post office backstamp

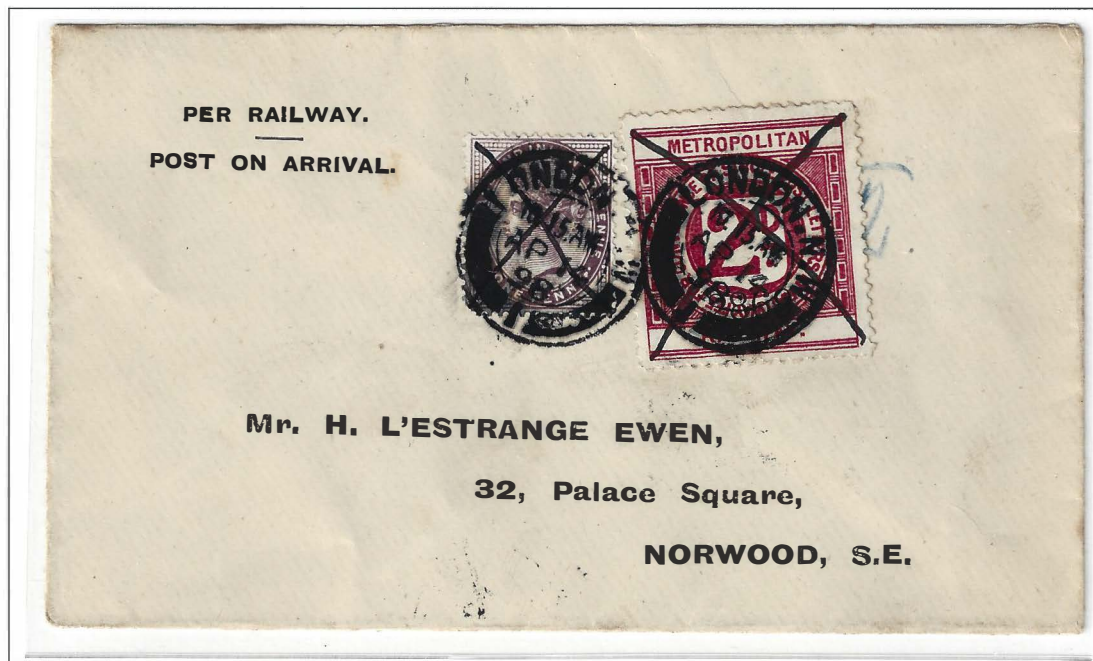
First Period (Feb 1, 1891 to Jan 14, 1920)
2d railway fee

The railway name was changed to "Great Central Railway" in 1897 (before the use below).

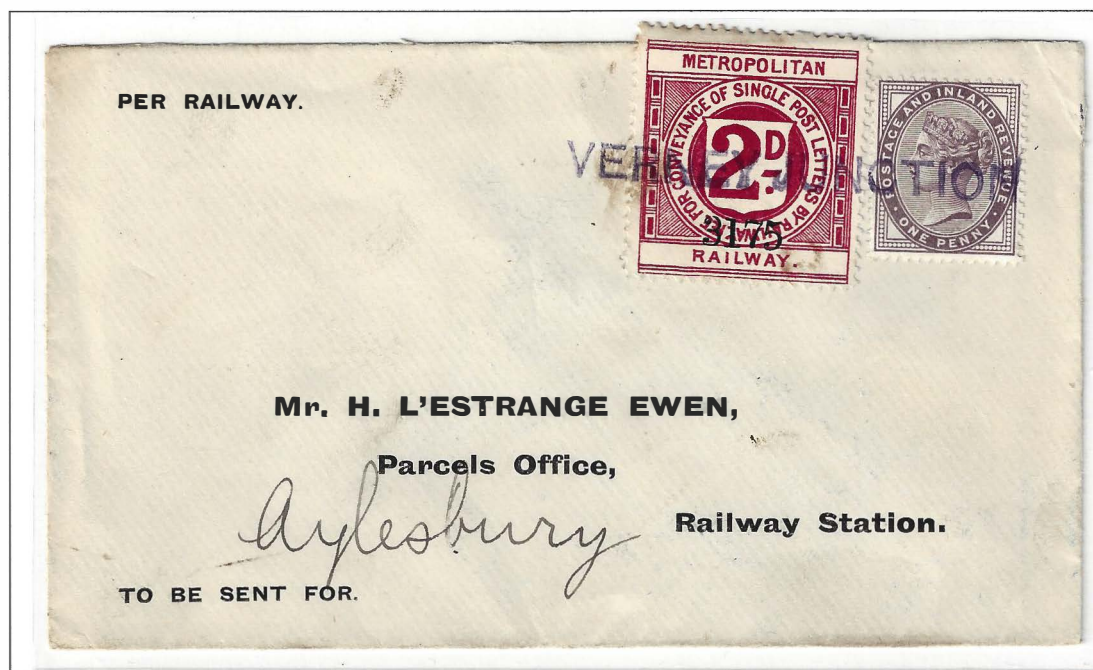


11 October 1898 Penistone Station to the mails at Retford, 1d postage
Manchester, Sheffield & Lincolnshire Railway 2d railway stamp
"Penistone MS & L Ry Station" oval cancels

First Period (Feb 1, 1891 to Jan 14, 1920)
2d railway fee

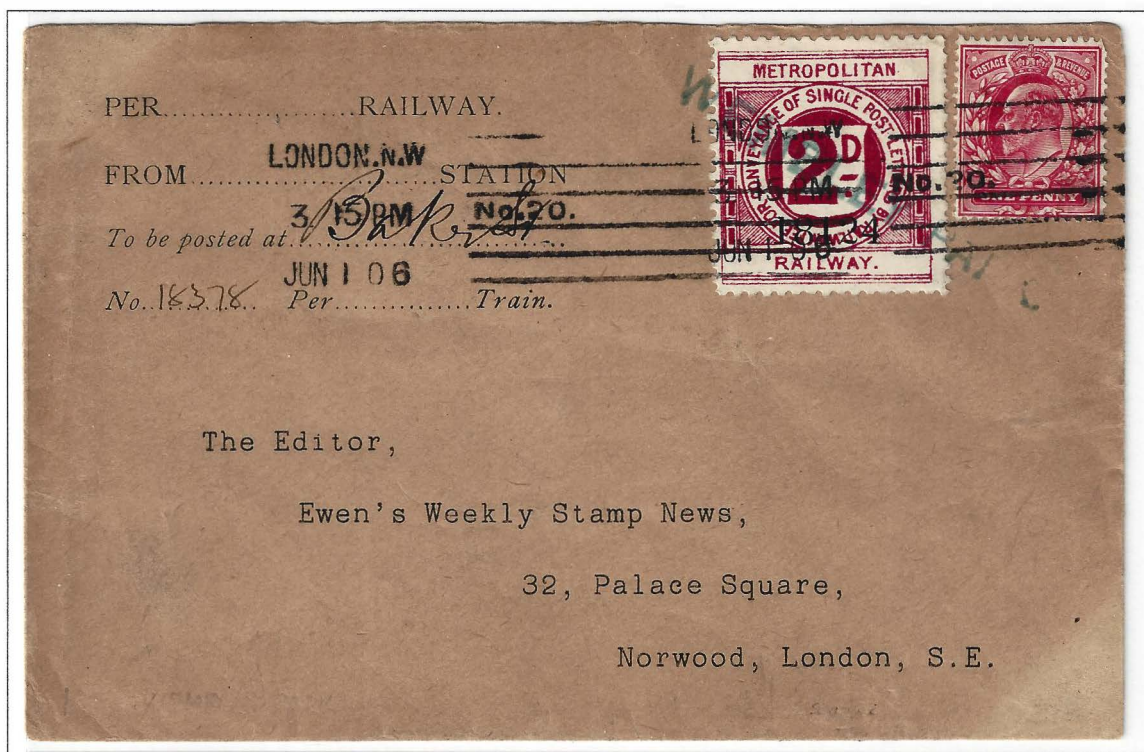


14 April 1898 to the mails at London N.W., 1d postage
Metropolitan Railway 2d stamp, perf 10, (control 2869), manuscript cross cancels



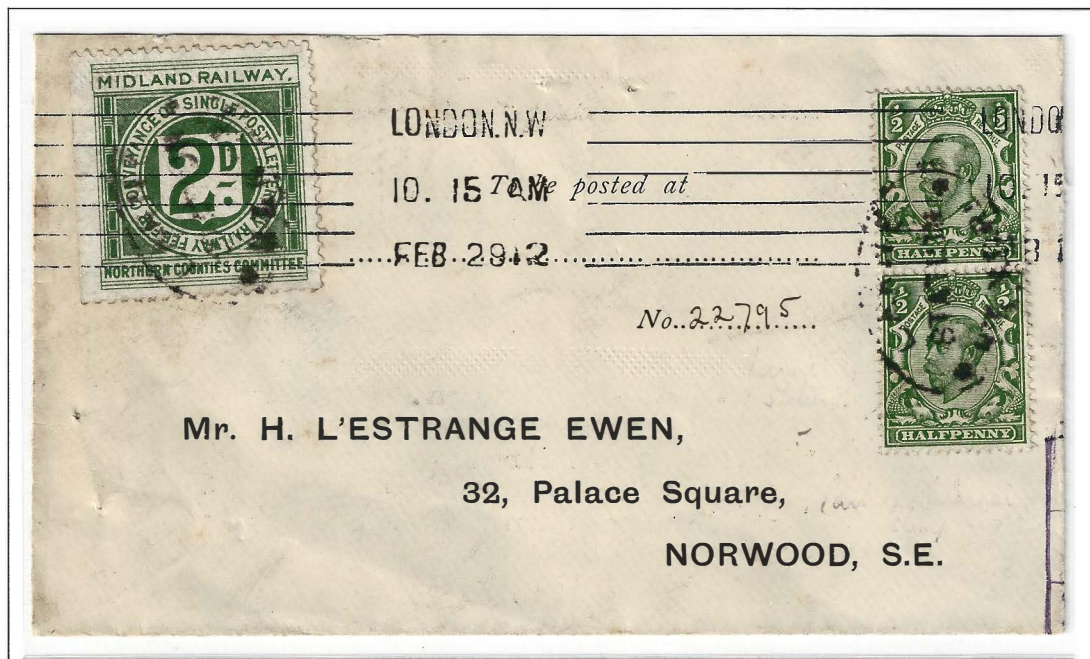
ca. October 1898 Verney Junction to the Parcels Office, Aylesbury Station, 1d postage
Metropolitan Railway 2d stamp, perf 11.5 (control 3175), straight line "Verney Junction" cancel

First Period (Feb 1, 1891 to Jan 14, 1920)
2d railway fee



1 June 1906 Wembley Park to the mails at London N.W., 1d postage
Metropolitan Railway 2d stamp, perf 10, (control 18124), straight line "Wembley Park" cancel

First Period (Feb 1, 1891 to Jan 14, 1920)
2d railway fee



29 February 1912 Stanraer Station to the mails at London NW, 1d postage
Midland Railway Northern Counties Committee 2d stamp with Stanraer Station oval cancel
London SE transit backstamp

North Staffordshire Railway

Ewen Covers

+ London & North Western Railway

Conjunctive Use

First Period (Feb 1, 1891 to Jan 14, 1920)
2d railway fee



12 July 1905 Uttoxeter Station to the mails at Norwood SE, 1d postage with cross cancel
North Staffordshire Railway 2d stamp with manuscript "Uttoxeter 11/7/05" cancel
conjunctive use, North Staffordshire Rlwy. to Colwich, London & North Western Rlwy. to London

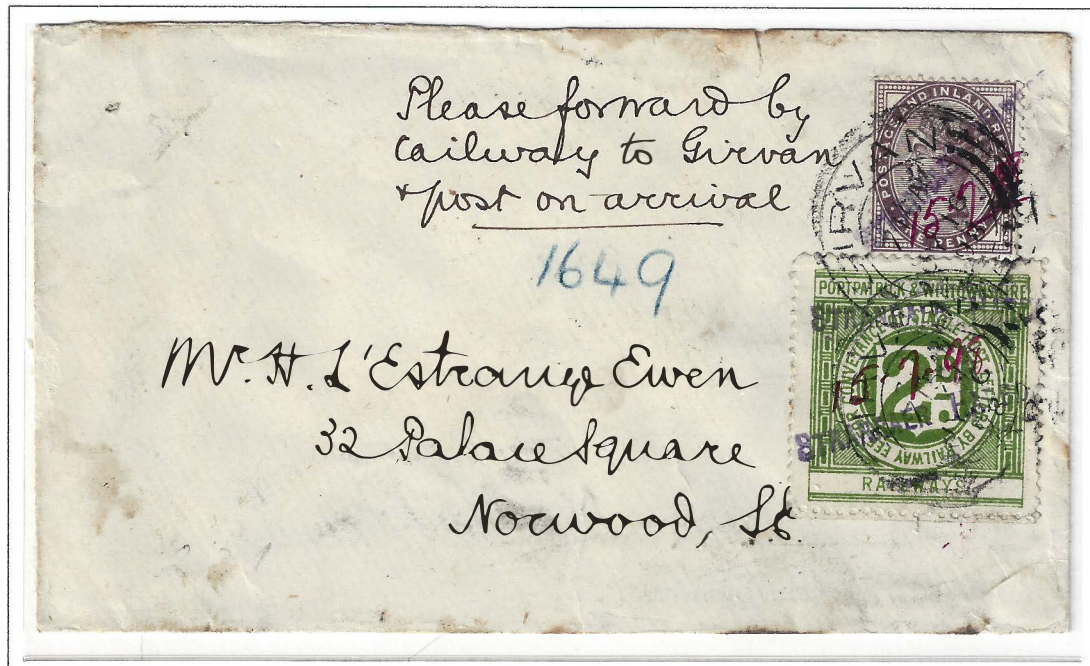


First Period (Feb 1, 1891 to Jan 14, 1920)
2d railway fee

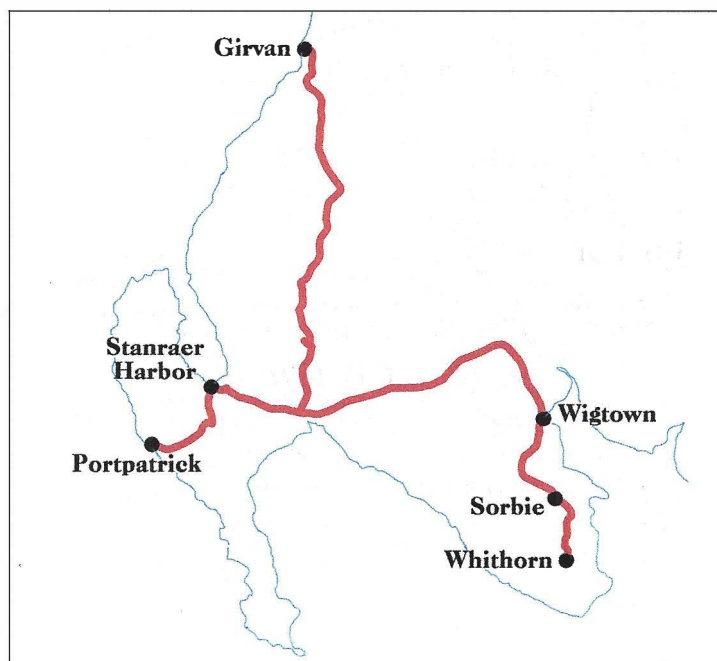


25 April 1901 to the mails at Port Talbot, 1d postage
Port Talbot Railway And Docks Co 2d first issue (1901, control 41), manuscript cross cancels

First Period (Feb 1, 1891 to Jan 14, 1920)
2d railway fee

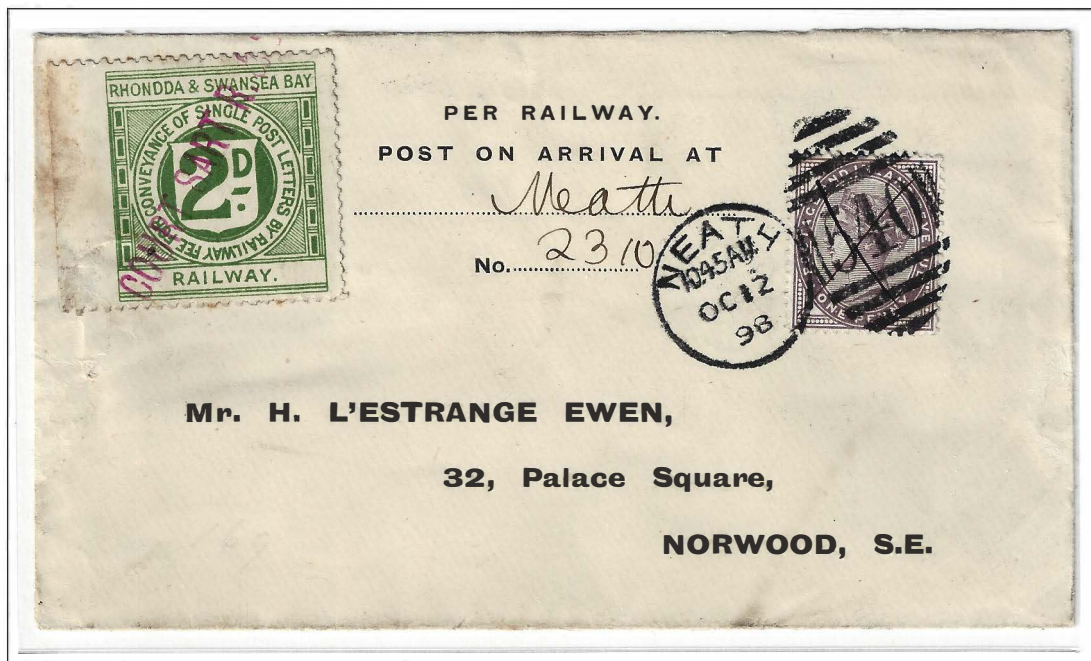


15 July 1898 Stranraer Harbor to the mails at Girvan, 1d postage
Portpatrick & Wigtownshire Railway 2d stamp, "Stranraer Harbor" straight line cancels
"post on arrival" endorsement, Girvan, Ayr and London S.E. postmarks



The Portpatrick and Wigtownshire (Joint) Railways was formed in 1885 when the previously independent Portpatrick Railway and Wigtownshire Railway companies were amalgamated into a new company jointly owned by the Caledonian Railway, Glasgow & South Western Railway, Midland Railway and the London & North Western Railway and managed by a committee called the Portpatrick and Wigtownshire Joint Committee.

First Period (Feb 1, 1891 to Jan 14, 1920)
2d railway fee



12 October 1898 Court Sart Station to the mails at Neath, 1d postage
Rhondda & Swansea Bay Railway 2d with red Court Sart straight line cancel

First Period (Feb 1, 1891 to Jan 14, 1920)
2d railway fee



11 October 1898 Cardiff (Parade) to the mails at Roath (Cardiff), 1d postage
Rhymey Railway 2d (1891 issue, control 1373) and postage with manuscript cross cancels

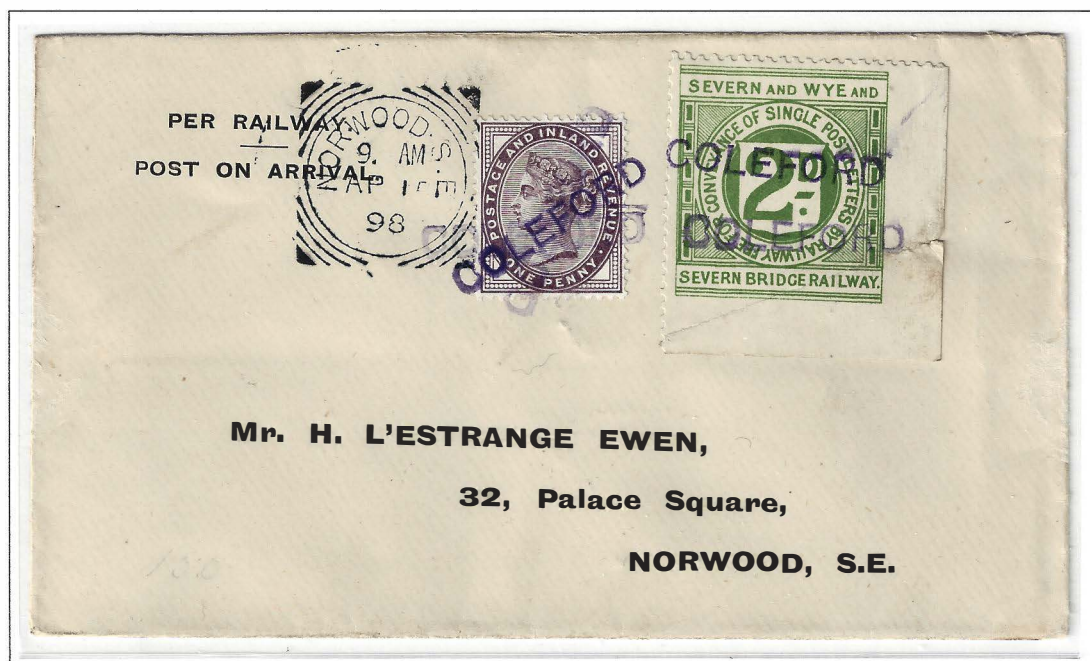
Severn & Wye Joint Railway

Ewen Covers

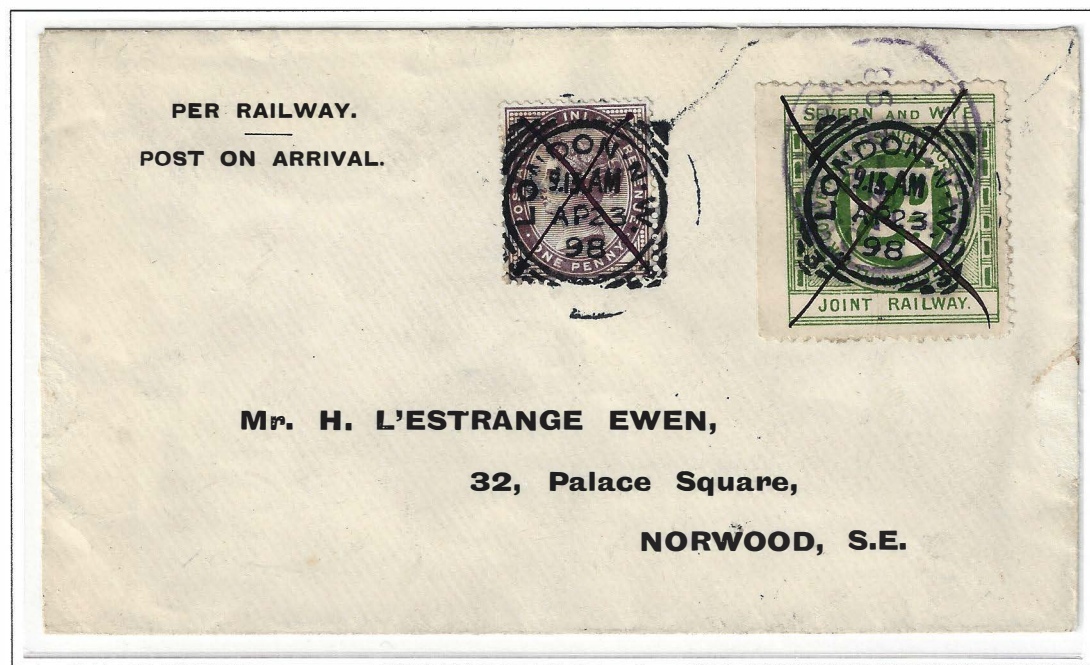
+ Midland Railway

Conjunctive Use

First Period (Feb 1, 1891 to Jan 14, 1920), 2d railway fee



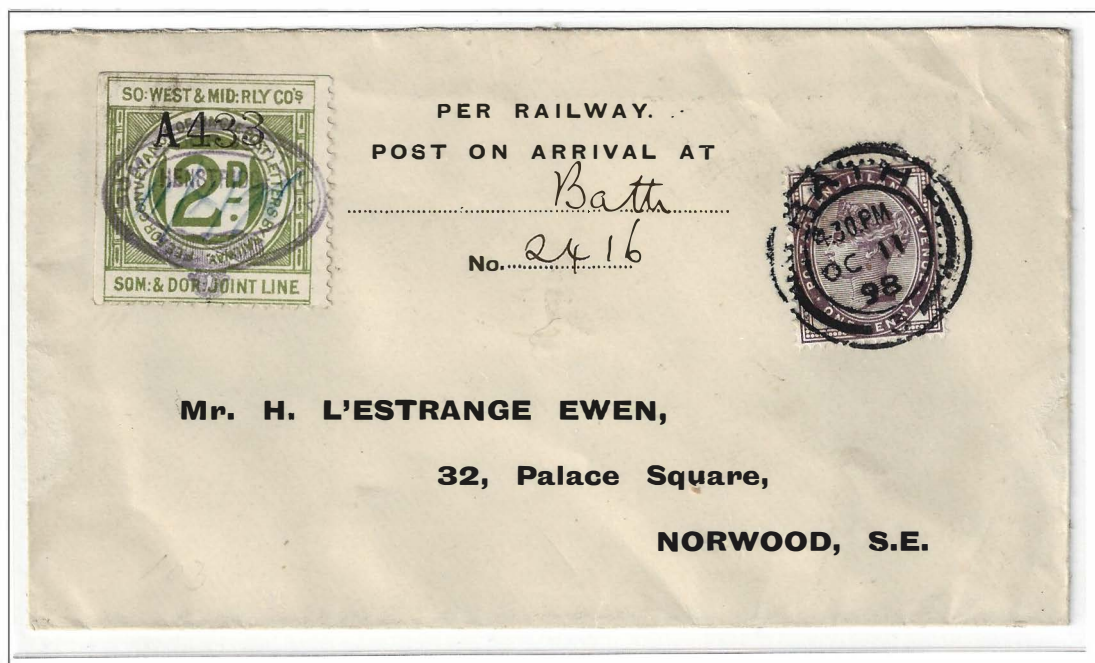
2 April 1898 Coleford to the mails in London SE, 1d postage
Colford station name postmarks on **Severn and Wye** and **Severn Bridge Railway** 2d (1891 issue)
transferred to Midland Railway at Berkeley Road for carriage to London



23 April 1898 Parkend Station via Berkeley Road Station to Euston Station, London, 1d postage
Severn & Wye Joint Railway 2d (1895 issue with new name), Parkend oval plus cross cancels
transferred to Midland Railway at Berkeley Road for carriage to London

Somerset & Dorset Joint Line (So: West: & Mid: Rly Co's) Ewen Covers

First Period (Feb 1, 1891 to Jan 14, 1920)
2d railway fee



11 October 1898 Henstridge Station to the mails at Bath, 1d postage
Railway 2d (1895 issue, control A433) with crowned double oval cancel and crayon date

Wrexham Mold & Connah's Quay Railway

Ewen Covers

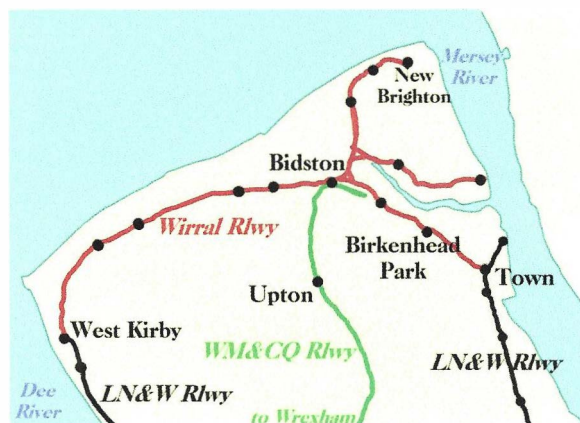
+ Wirral Railway

Conjunctive Use

First Period (Feb 1, 1891 to Jan 14, 1920)
2d railway fee



12 October 1898 Connah's Quay Wrexham Mold & Connah's Quay Railway to Bidston, 1d postage
conjunctive use with Wirral Railway to Birkenhead where it entered the mails
Wrexham Mold & Connah's Quay Railway 2d stamp plus 1d postage



The Wirral Peninsula showing Wirral Railway lines in red, the northernmost portion of the Wrexham Mold and Connah's Quay Railway lines in green and connections to the London & North Western Railway in black. Liverpool is across the Mersey River at right.