

# CHARISMATIC CONNECTICUT

This exhibit presents various select types of Connecticut postal markings with particular attention given to fancy cancellations.



WATERBURY, New Haven County  
May 11, 1866 DC Pmk with Fancy Serif 'W' Cancel Type 1 on U59 PSE



Ridgefield  
Fancy "R"



Norwich  
Bow Tie



Waterbury  
Bridgeport Fireman



South Norwalk  
Shield



Pomfret  
'US' in Circle

WINDSOR-LOCKS/CT,  
Hartford County

OCT 22 (month in type)  
1833, 12-1/2¢ rate  
Boat-In-Canal Elaborate  
Frame Pmk (EDU)

...we have a new Post  
Office lately established  
within a few rods of my  
door...



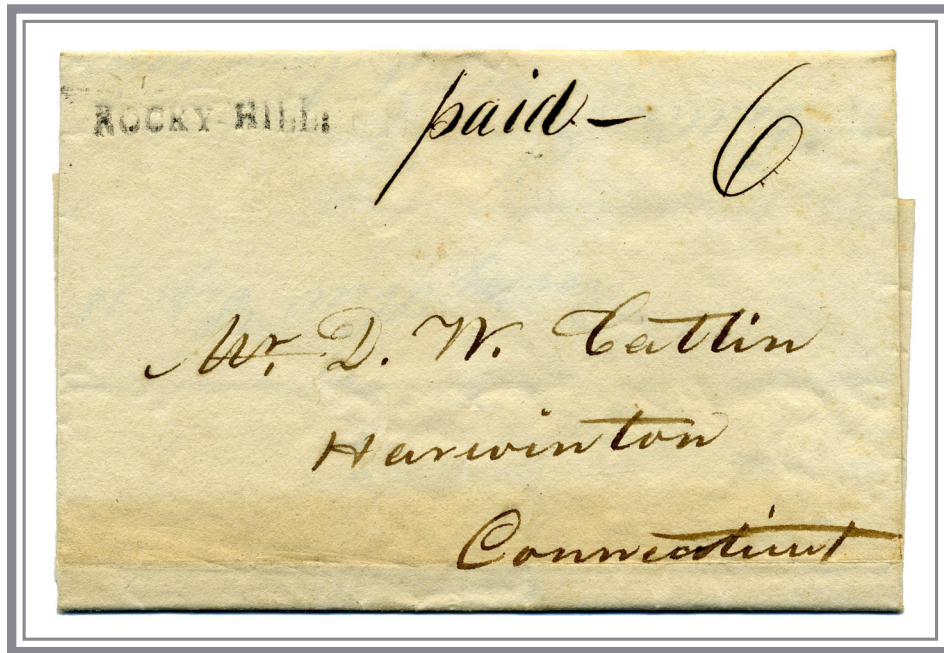
MIDDLEBURY CT,  
New Haven County

November 21, 1848  
manuscript '5' rate  
Elaborate Frame Pmk  
(ODU)



COLLINSVILLE/CONN.,  
Hartford County

Dec. 1, 1840, ms 6¢ Rate  
Red Large Axe  
Elaborate Frame Pmk  
(4 Documented Examples)



ROCKY HILL, Hartford County  
September 15, 1833 Straightline Pmk (ODU) 6¢ Rate to Harwinton



GREENWICH C.t. Fairfield County  
July 10, 1834 Straightline Pmk (ODU) 'Paid 6' manuscript rate to New York

~ Rates of 1810 ~

HARTFORD.\* 20mm NOR

300-500 miles

PAID 20¢ Single Rate

40¢ Double Rate

60¢ Triple Rate

*paid*

HARTFORD.  
OCT. 12  
PAID.

John M Kim 20  
Baltimore

For  
Charity Potch

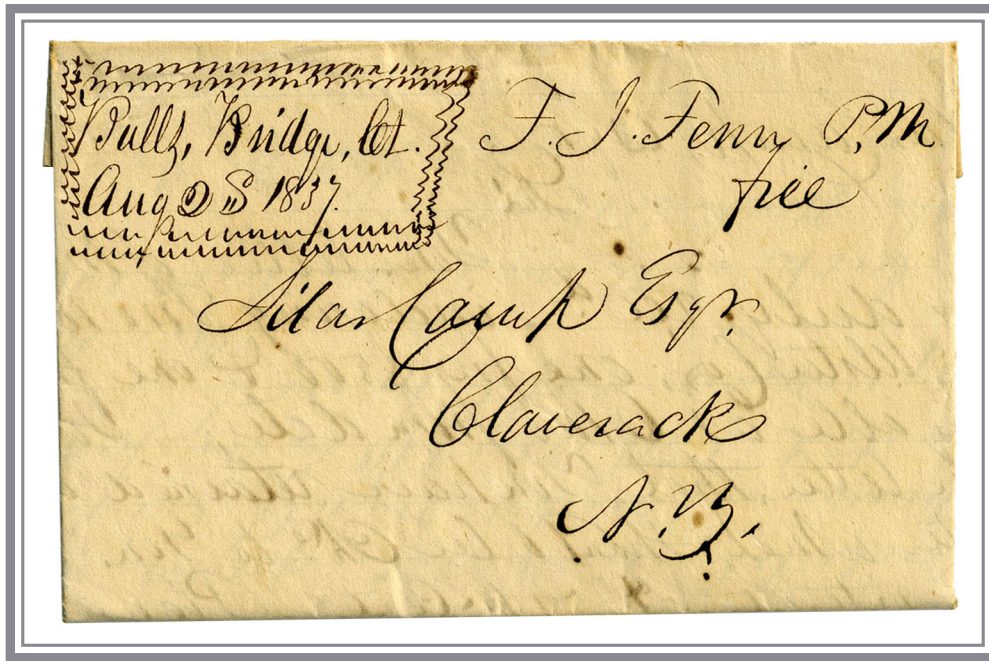
Zachariah Symour Esq  
Canandagua  
Ontario County

HARTFORD.  
AUG. 28

60  
Zachariah Symour Esquire  
Canandagua  
State New York

HARTFORD.  
Feb 25

6107.1018  
47



BULLS BRIDGE [1], Litchfield County  
 August 25, 1837 Manuscript Pmk, F. J. Fenn Postmaster Free Frank (5 Documented)

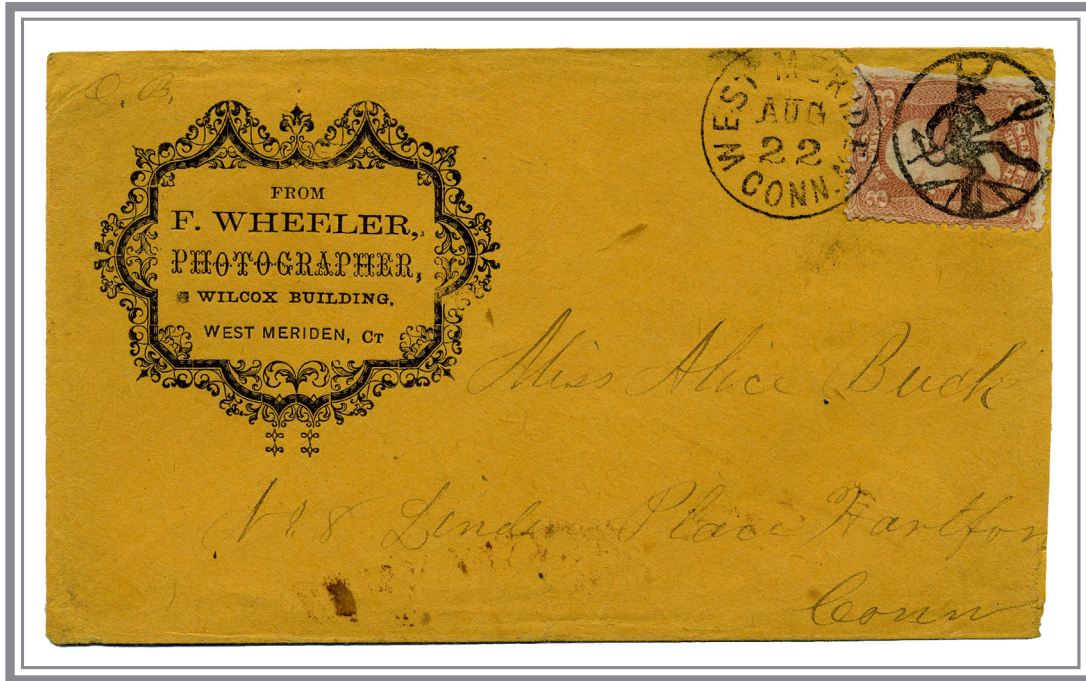


QUARRYVILLE, Tolland County  
 May 14 (NYD) with Pen Cancel on 5¢ 1847 Scott #1  
 Only 2 Documented Examples Currently Recorded

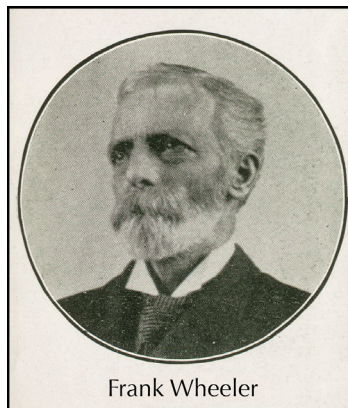


HARTFORD INDEPENDENT MAIL  
Feb. 27, 1845 Route 'South' manuscript precanceled  
5¢ Black on Yellow Glazed (80L1) Position 3 to New York City





WEST MERIDEN/CONN. New Haven County  
23mm Black AUG 22, (1866) Duplex with Devil With Pitchfork Fancy Cancellation  
Elaborate Corner Card of F. Wheeler, photographer, to Hartford



Frank Wheeler



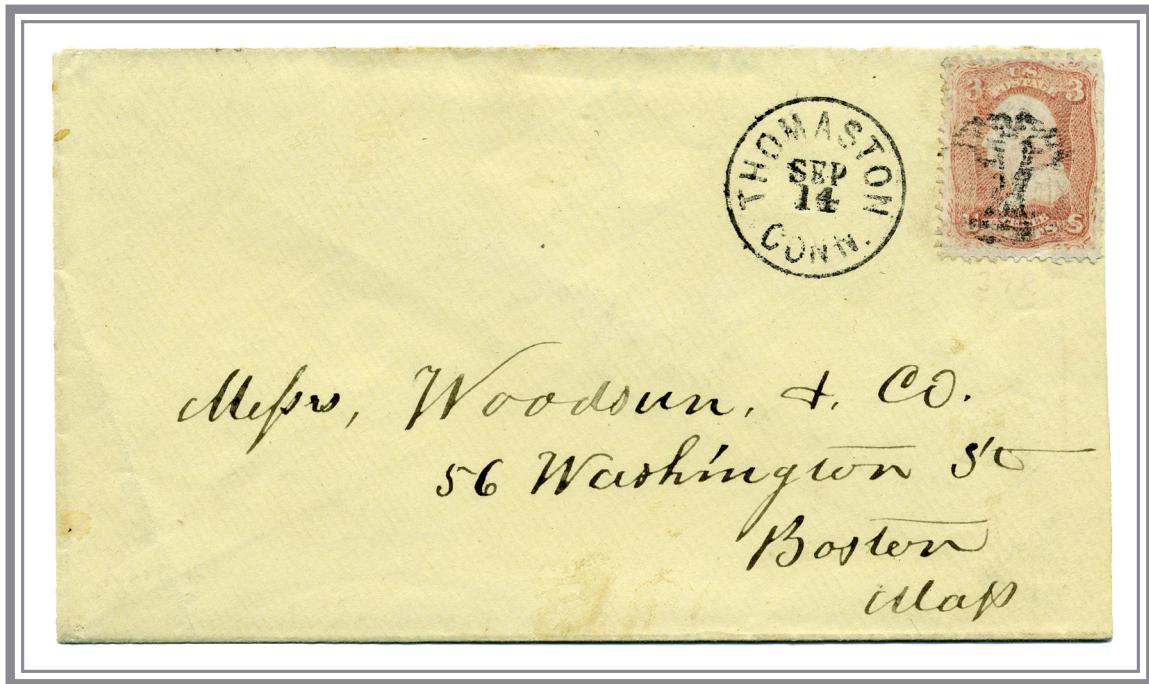
HOCKANUM/CON. Hartford County  
25mm Black AUG 3, (ca. 1866) with Fox Fancy Cancellation (Duffney Type 2)  
Total of 11 On-Cover Examples Documented



The home (post office) and silver shop of Hockanum Postmaster Dudley Fox,  
creator of the Running Fox fancy cancel (Photo WJD, 2010)

*Dudley Fox*





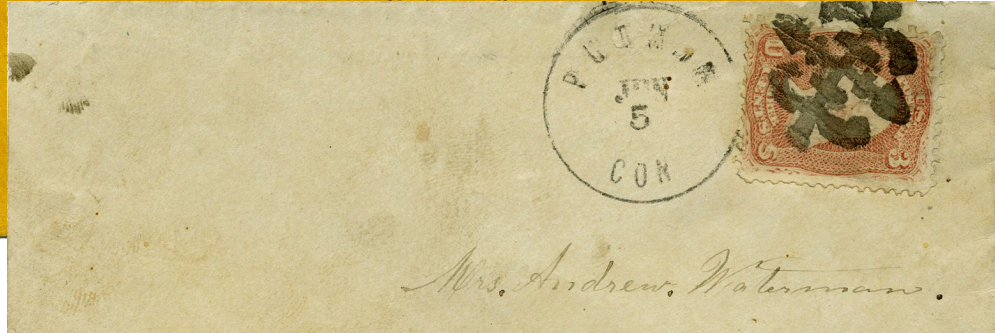
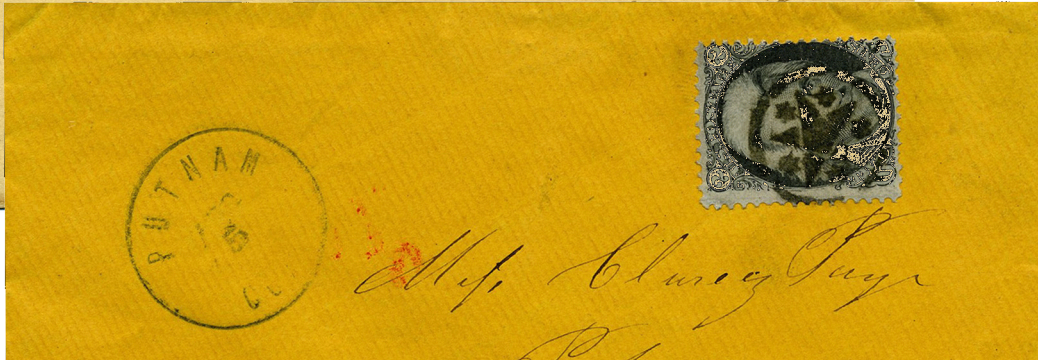
THOMASTON/CONN., Litchfield County  
SEP 14 (1867) Charter Oak Fancy Cancel on Scott #65, 14 On-Cover Examples Documented



The Connecticut Charter Oak tree still standing after an estimated 700 years on Wylls Hill in Hartford, photographed in 1855 by Nelson Augustus Moore just one year prior to its demise

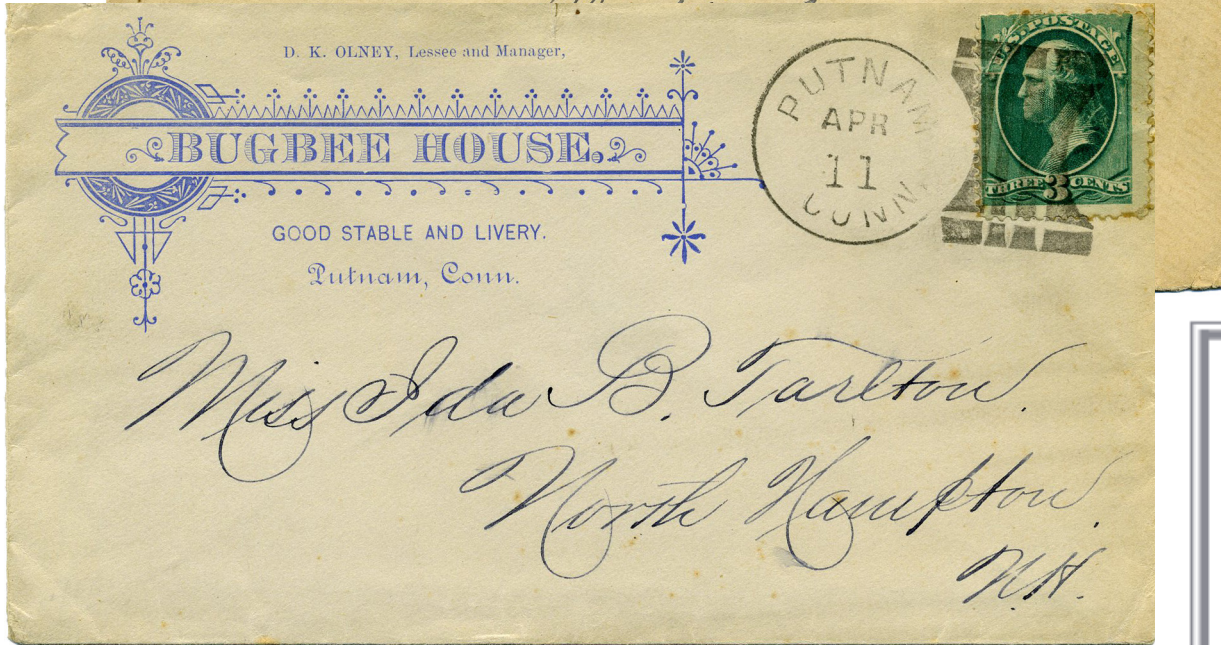
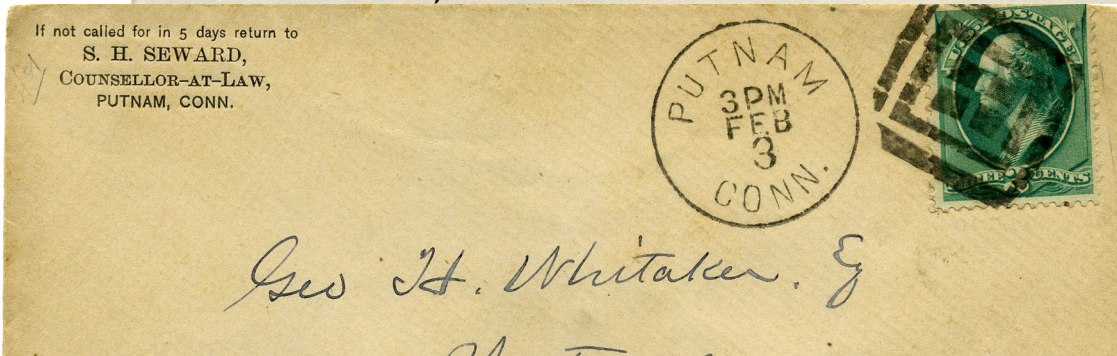
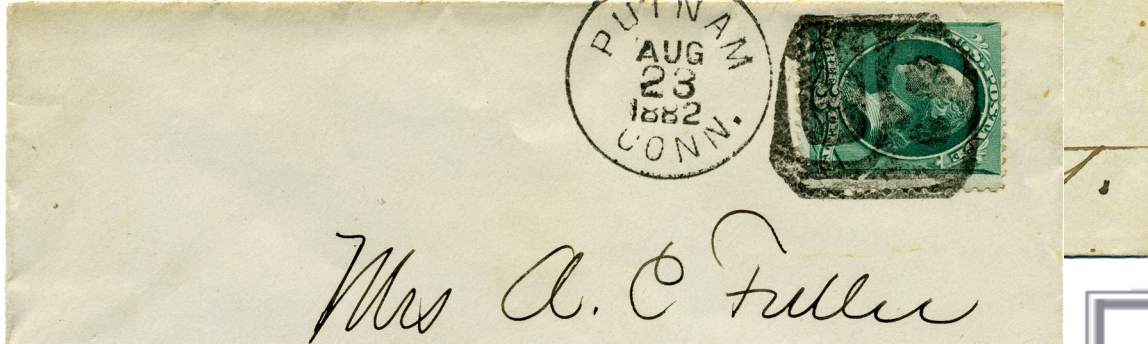
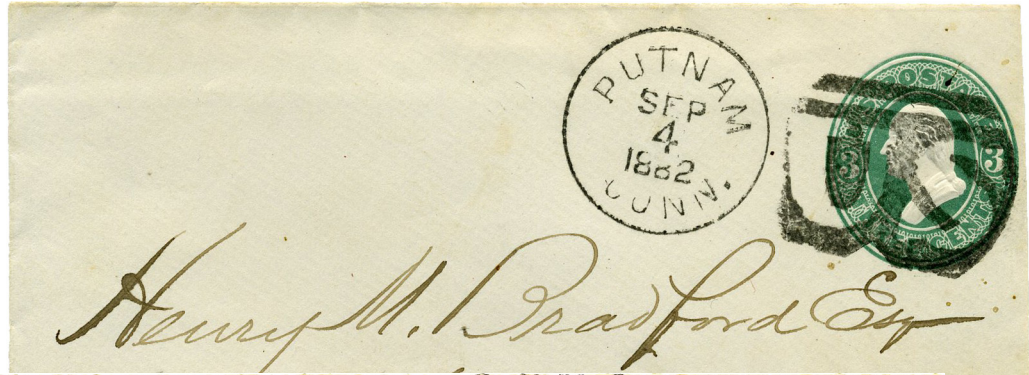
PUTNAM  
Windham County  
1st Period Fancy Cancels

- 1) Negative OCT Script  
S-E ND-M12
- 2) 5-Point Star in Circle  
S-E ST-E 29
- 3) Double Anchor  
S-E PO-An 14a
- 4) US in Fancy Frame  
S-E PT-C 23



PUTNAM  
Windham County  
2nd Period Fancy Cancels

- 1) Negative Serif US  
Cole US-97
- 2) Negative Sans-Serif US  
Cole US-98
- 3) Four Square  
Left Cut to Fit (UNL)
- 4) Plinth  
Cole GE-175





NEW-HAVEN/Ct. 25mm MAR 13 (NYD) DC Pmk with 6 Pointed Star of David  
Fancy Cancel, 'Donut Hole' type, tying 3¢ Scott #65



NEW HAVEN/CONN 23mm MAY 27 (NYD) Pmk with 6 Pointed Star of David  
Fancy Cancel, 'Solid Center' type, tying 3¢ Scott #65



HAVANA-NEW HAVEN-PORTSMOUTH  
 Datelined Havana 22d Jan 1820 per Brig Lucy  
 Red NEW-HAVEN.CT. (high T) FEB 28, (1820) 28mm NOR Postmark  
 with fancy SHIP-in-hull (21x7mm) handstamp, 20-3/4¢ rate to Portsmouth  
 (18-3/4¢ inland + 2¢ ship letter fee)



Black NEW HAVEN/CONN. 30mm 10 MAY (NYD) CDS  
 with '7' (5¢ postage + 2¢ ship letter fee) and SHIP-in-hull (21x7mm) handstamps  
 manuscript 'pr. Miranda' to Salem



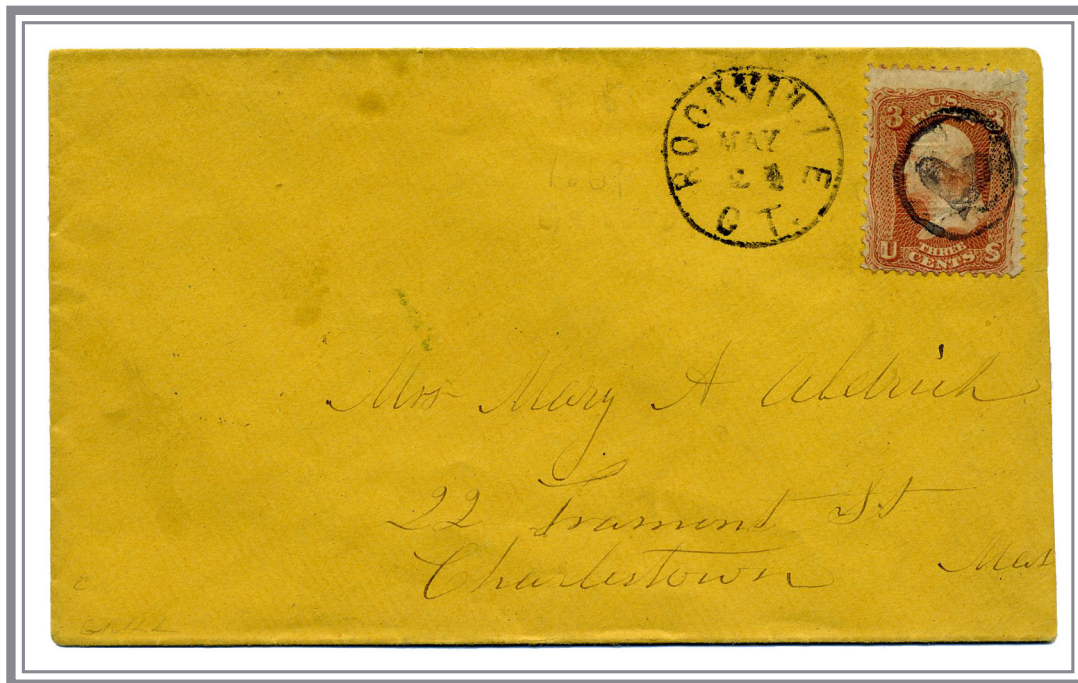
WINCHESTER CENTRE MAY 19., Litchfield County, 33mm Grayish-Green Octagonal Postmark  
 3c Brownish Carmine, Ty. II (11A). Position 46R2L, tied by red (NORTH BROOKFIELD?)  
 May 12 CDS to Winchester Centre and forwarded to Warsaw N.Y.,  
 Grayish-Green Winchester Centre octagonal datestamp, usually found in black,  
 with the day overwritten, ms. 'for<sup>d</sup> 5' for forwarding postage due



WILLIMANTIC/CON, Windham County,  
 30mm Black Octagonal May 15, 1865 date stamp on local drop rate cover



GUILFORD/CT., New Haven County  
23mm JAN 29 (NYD) CDS with Cross-In-Heart Fancy Cancel S-E CR-C 18 on Scott U58



ROCKVILLE/CT., Tolland County  
24mm May 24, NYD CDS with Heart-In-Circle Fancy Cancel S-E Ph-H 13 on Scott #94



ANSONIA/CONN., New Haven County, 27mm DEC/12/6PM (1882) CDS  
Negative 6-Point Star Fancy Cancel on 3¢ Pink on U163 with Goodyear Rubber Glove Receiving Stamp



DERBY/CT., New Haven County, 26mm FEB/18 (1871) CDS  
Large Positive 5-Point Star Fancy Cancel on Scott U82