

# New South Wales Governor Frank Mail, 1895 to 1902

The purpose of this exhibit is to demonstrate the use of Governor frank mail in the British Colony of New South Wales (NSW). This mail was used only by the Governors for transmission of official Government mail for eight years, January 1895 to November 1902. This service started in 1895 based on covers seen. No archive documents are known authorizing this service.

Postage was required on Official mail to non-British Empire countries. To validate mail to the British Empire was paid in full, the Sydney Post Office applied a “**POSTAGE PAID SYDNEY NSW**” handstamp.

The exhibit is organized by the various Types of Governor Franks. There are nine known types. Hans Karman, in his book *Frank and Free*, assigned each a N300.x catalogue number. The franks are in blue, purple, and maroon colors.

On the back flap of the envelopes are red and black seals. These seals were used exclusively by the Governor. Black seals are usually on mourning covers.



Type 1 N300.1  
Frank



Type 1 seal with text  
known in red and black



Type 2 seal without text  
known in red and black

Type 1 N300.1

British Empire Destination (Bermuda)



Moss Vale, January 1896 to the North America West Indies Station. Cover went via London and New York and then to the HMS Crescent at the West Indies Station in the Bahamas. Type 1 Government House red seal.

**This cover traveled the greatest distance of any use  
Less than ten recorded uses outside of Sydney**

British Empire Destination (England)



Sydney March 1900, in purple on front. "POSTAGE PAID SYDNEY NSW" handstamp indicates no postage due.

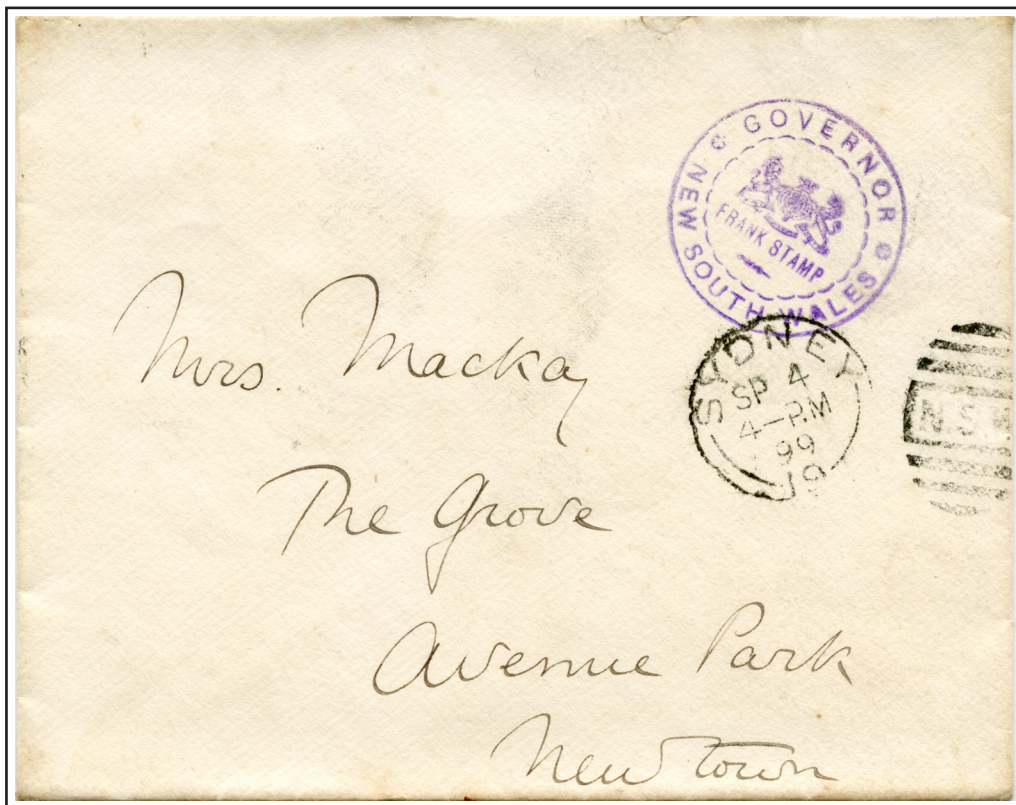
British Empire Destination (England)



Sydney December 1895, in maroon. "POSTAGE PAID SYDNEY NSW" handstamp indicates no postage due. Type 1 Government House red seal.



Sydney March 1900, in blue. Type 1 Government House red seal.



Sydney September 1899, in purple. Type 1 Government House red seal.

Sydney August 1901, mourning use.  
Seven months after Commonwealth of  
Australia was formalized.

Only example of an envelope with the  
phrase **State Government House** on the  
front of the cover. Type 2 Government  
House black seal.



The Governor of NSW returned to  
England before the Governor-General  
arrived. The NSW Government House  
was occupied by the Governor-General  
and it became the Commonwealth of  
Australia official residence until another  
location was constructed and occupied  
in 1914.



Sydney August 1900 . Type 1 Government House black seal, normally on mourning covers.

**British Empire Destination (England)**



Sydney September 1898. "POST-AGE PAID SYDNEY NSW" handstamp indicates no postage due. Type 1 Government House red seal.

British Empire Destination (England)



Sydney September 1900. "POSTAGE PAID SYDNEY NSW" handstamp indicates no postage due. Type 2 Government House red seal. Most recorded Type 2 seals are black.

British Empire Destination (New Zealand)



Sydney November 1897. "POSTAGE PAID SYDNEY NSW" handstamp indicates no postage due. Type 1 Government House red seal. Cover reentered into the mail with the New Zealand Governors "Government House Frank".

non-British Empire Destination (Samoa)



Sydney April 1898, 5d double UPU rate. Type 1 Government House red seal.  
**Only recorded NSW Governors Frank to a non-British Empire country**

British Empire Destination (New Zealand)



Moss Vale, February 1897. Cover forwarded from New Zealand North Island to South Island. Missing required "POSTAGE PAID SYDNEY NSW" handstamp. Type 1 Government House black seal.

**Less than ten recorded uses outside of Sydney**

## Governor-General of Australia Frank Mail

On January 1, 1901 the Commonwealth of Australia became an official entity of the British Empire. The Governor-General of Australia arrived on December 15, 1900 in Sydney and was provided a Frank Handstamp for his mail as a courtesy. Below are two Governor-General Free Franks. One before and one after he was officially in charge.



Sydney December 1900. Type 1 Government House red seal.

## British Empire Destination (England)



Sydney February 1901. Front only with "POSTAGE PAID SYDNEY NSW" handstamp indicating no postage due.