

External Mails of Thailand – 1939 to 1942

Objective: This One Frame Exhibit will show, in chronological order within each Section of the Plan, the Censorship or the lack thereof on Outbound and Inbound mail of Thailand. It is worthy to note that during this time the quantity of Outgoing Mail to Incoming Mail was imbalanced in favor of Outgoing.

Background: The most common means of international communication during this time was mail and World War II had a prolific effect on its delivery. Mail routes were changed, censorship enforced, transit times affected and deliveries suspended.

Perhaps due to Germany's aggression prior to the start of WWII the British Empire was well ready to start its censorship of civilian mail in September of 1939. Even though Thailand was not involved in the war at this time, most of the mail to and from Thailand became subject to censorship since this mail, whether surface or air, most likely passed thru a port controlled by the British Empire such as Palestine, Calcutta, Penang, Singapore, Hong Kong, Rangoon or Sydney.

With regards to Thailand, the only known laws or orders from the government that have been indirectly linked to the censorship of civilian mail are the Act Controlling Communications with Foreign Countries by the Council of Regency, 25-Oct-40, which only referred to "material imported or exported" and the Safeguarding of Official Secrets Act on 21-Nov-40. There has yet to be any reported official documentation explaining the actual policy, procedures and details of Thai censorship. Thus we can only rely on the news articles from that time period and the examination of mail with or without Thai Censor Marks to support the current claims of Thai censorship.

Exhibit Plan

1. Outbound Mail

- 1939 War Outbreaks in Europe
- 1940 Pre Thai Censorship Era
- 1940/41 Thai Censorship Begins
 - No Thai Censor Marks
- 1941 Thai Censored Mail

2. Inbound Mail

- 1940 Pre Thai Censorship Era
- 1940/41 Thai Censorship Begins -
 - No Thai Censor Marks
- Thai Censored Mail
- Service Suspended Return to Sender

Outbound Mail

1939 – War Outbreaks in Europe



16-Sep-39, Bandon Thailand to Penang Malaya Registered prepaid 45 Satang, Reverse CDS "South Express Train" dated 17-Sep-39

Outgoing mail Censored at destination only

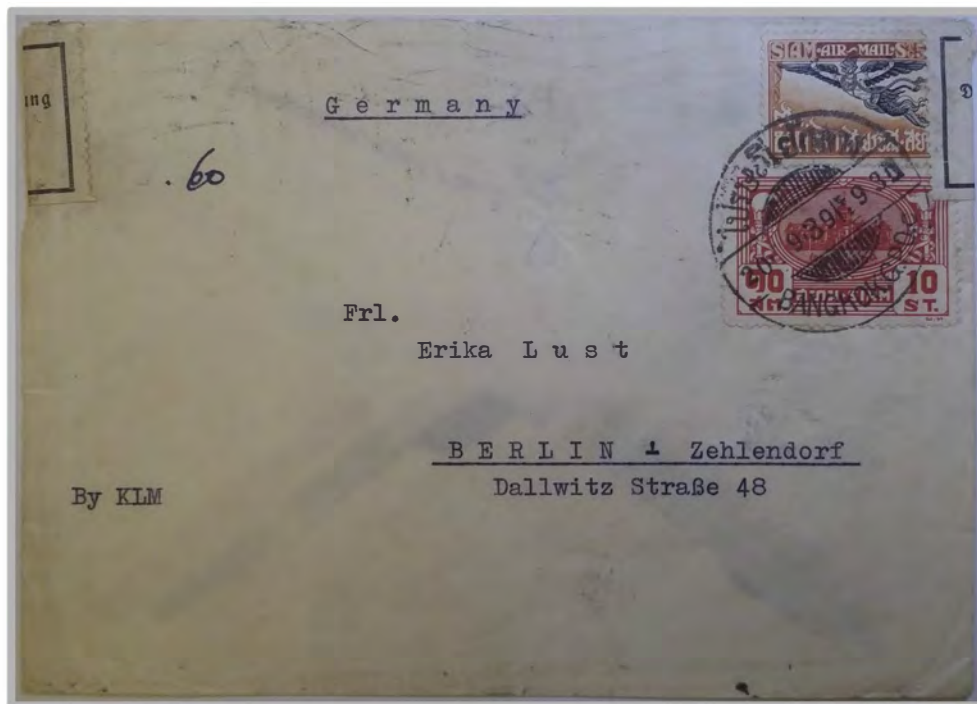
Censor Hand Stamp Penang Type 1 - **Fewer than 5 Recorded Examples**

Censor Label Penang Type 2B - **Fewer than 15 Recorded Examples**

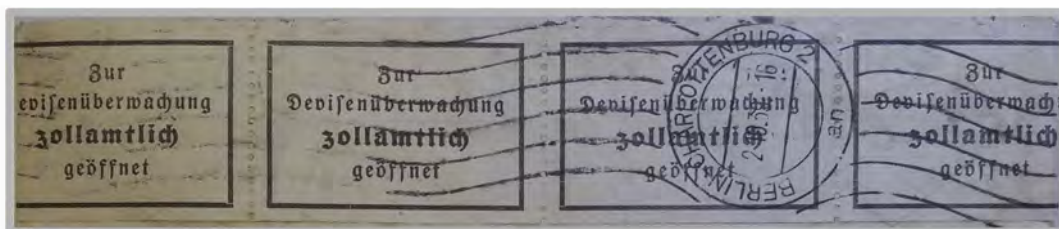
External Mails of Thailand – 1939 to 1942

Outbound Mail

1939 – War Outbreak in Europe



20-Sep-39 Bangkok Thailand to Berlin Germany KLM Airmail prepaid 50 Satang,
Reverse arrival Berlin Charlottenburg CDS 2-OCT-39
Outgoing mail Censored at destination only
Earliest recorded German Censorship on Thai Cover



First used German Customs Office WWII Censor Label
Predates use of Censor Hand Stamps
This Label used only until end of 1939

External Mails of Thailand – 1939 to 1942

Outbound Mail

1939 – War Outbreak in Europe



10-Nov-39 Bangkok Thailand to Helsingborg Sweden Registered Airmail prepaid 75 Satang, Violet Censor Hand Stamp Palestine - J.3 Type 2A1



Censor Label - J No. 36 Jerusalem PC22 Type 3AJ used Oct 9,1939 to Jan 17, 1940
Label dimensions 81mm x 52mm thus two were needed to seal most envelopes

Only Recorded Example of this censor label on Thai Cover

External Mails of Thailand – 1939 to 1942

Outbound Mail

1940 Pre-Thai Censorship Era



Apr-40 Bangkok Thailand – Rotterdam Netherlands Registered Surface prepaid 30 Satang
 Interesting routing Via Siberia Per Steamship
 German Censor Label tied with German Censor Mark

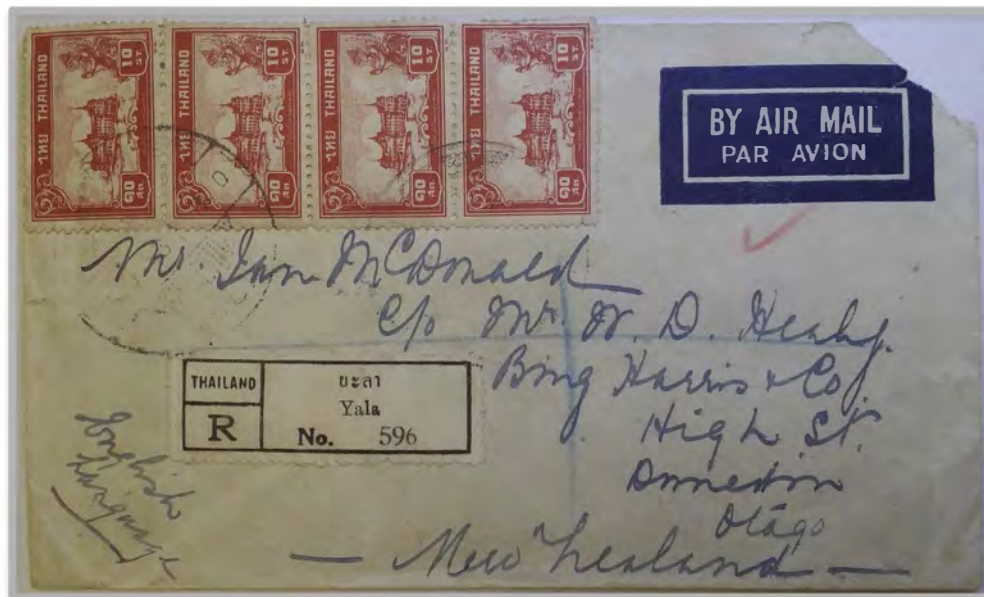


2-Jul-40 Bangkok Thailand – Chicago USA Airmail ppd. 1 Baht 65 Satang
 Censor Hand Stamp Hong Kong Type 6
 Censor Label Hong Kong Type 3A
 Hong Kong Air Transit #2 Marking - *Fewer than 3 Recorded Examples on Thai Cover*

External Mails of Thailand – 1939 to 1942

Outbound Mail

1940 Pre-Thai Censorship Era



14-Sep-40 Yala Thailand to Otago New Zealand Registered Airmail ppd. 1 Baht 60 ST.

Via Bangkok

No Australia or New Zealand Censor Marks or Label - Unusual

Reverse



Very Long Transit Time for Air Mail

Yala CDS 9-Sep-40 Arrives Bangkok CDS 17-Dec-40 - **94 Days**

Arrives NSW Australia CDS 26-Dec-40

Total 103 Days Yala to Australia Transit PO

External Mails of Thailand – 1939 to 1942

Outbound Mail

1940 Pre-Thai Censorship Era



18-Sep-40 Bangkok Thailand – Genève Switzerland Air Mail ppd. 1 Baht 65 Satang
Unusual Routing Trans Pacific to Europe – Most of Europe Occupied by Germany
39 Days Transit to Lisboa Central Portugal CDS 27-Oct-40
Censor Hand Stamp Hong Kong Type 6 & Censor Label Type 3A
Hong Kong Air Transit #5 Marking - **Only 1 Recorded Example on Thai Cover**

External Mails of Thailand – 1939 to 1942

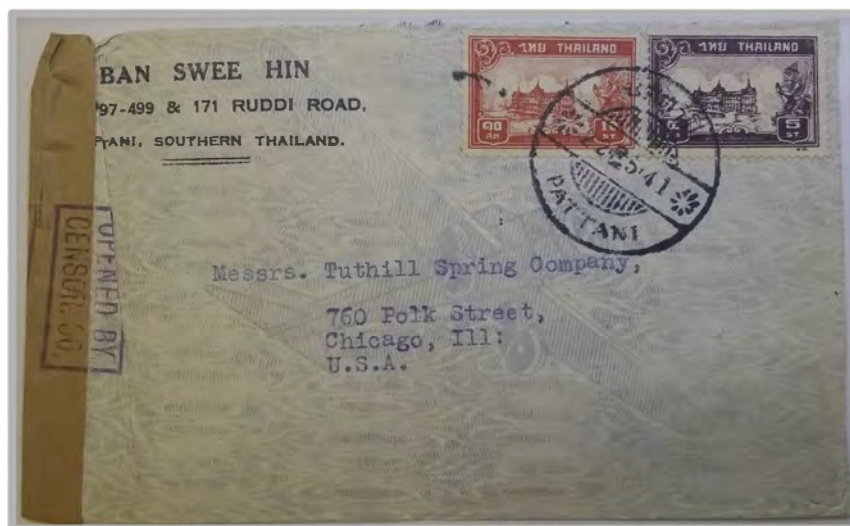
Outbound Mail

1940/41 – Thai Censorship Begins –
Covers with No Thai Censor Marks

Thailand began censoring Foreign Mail late 1940. The earliest recorded cover with a Thai Censor Mark is 7-Dec-40. Before the arrival of Japanese soldiers in Jan 1942, Foreign mail did not always bear a Thai Censor Mark because censorship was done randomly, sent abroad direct from Provincial Post Office or simply not stamped by the censor.



28-Dec-40 Bangkok to New Jersey USA KLM Airmail prepaid 1 Baht 75 Satang
Via Sydney KLM Flight NE 45 or 46
Censor Hand Stamp Sydney Type H2-4a & Censor Label Type L2-3a



22-May-41 Pattani Thailand - Chicago prepaid 15 Satang
No Thai Censor Mark – dispatched abroad direct from Provincial PO
Censor Hand Stamp Penang Type 7
Censor Label Penang Type 4

External Mails of Thailand – 1939 to 1942

Outbound Mail

1940/41 – Thai Censorship Begins –
Covers with No Thai Censor Marks



29-Jan-41 Bangkok– Zurich Switzerland Registered KLM Airmail Via Lydda prepaid 70 Satang
Baghdad CDS 31-Jan-41, Milano CDS 21-Feb-41, Zurich 2-Mar-41 – **32 Days Transit**
Censor Label Calcutta Type 3 *Fewer than 5 Recorded Examples*



P & T-Mail 25 Straits
Settlement Airmail Label

2-Jun-41 Ranong Thailand – Penang Malaya via Air Mail
Postal Stationary Envelope 10 Satang upgraded with 5 Satang stamp
No Thai Censor Mark – dispatched abroad direct from Provincial PO
Censor Stamp Penang Type 7 & Censor Label Penang Type 4

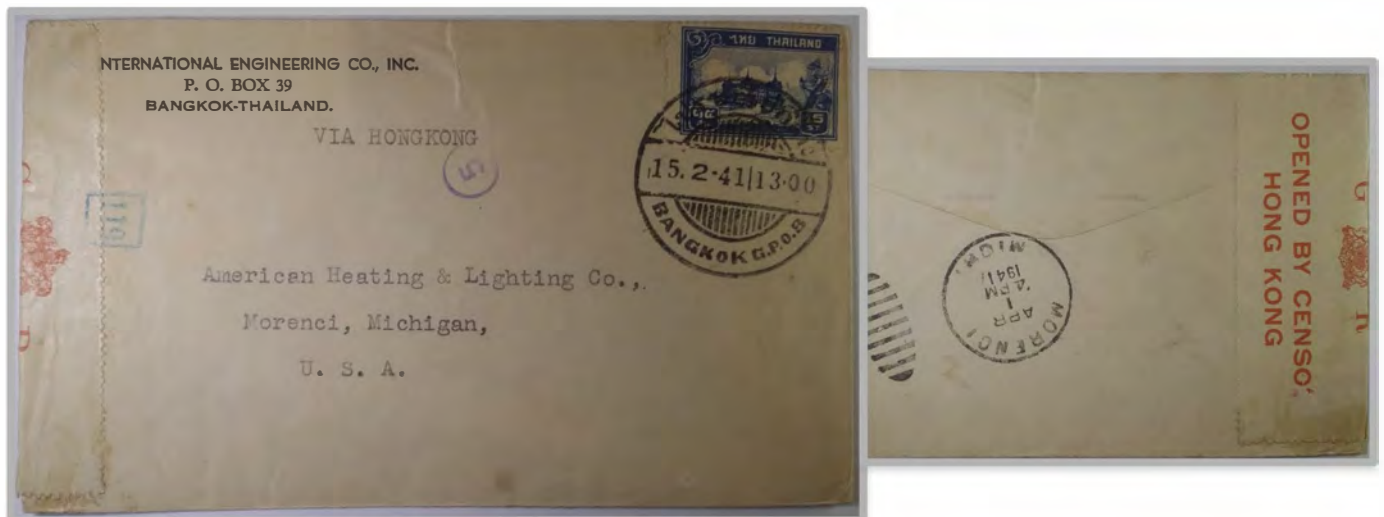
External Mails of Thailand – 1939 to 1942

Outbound Mail

1941 Thai Censored Mail



4-Feb-41 Bangkok Thailand – Double Bay Aus. Registered KLM Airmail prepaid 1 Baht 60 ST.
Censor Hand Stamp Thailand Type A Circle 3 black



15-Feb-41 Bangkok to Morenci Michigan USA via Hong Kong ppd. 15 Satang on
Destination CDS 1-Apr-41 45 days in transit
Censor Hand Stamp Thailand Type A Circle 5 violet
Censor Hand Stamp Hong Kong Type 6
Censor Label Hong Kong Type 4B

External Mails of Thailand – 1939 to 1942

Outbound Mail

1941 Thai Censored Mail

Wax Censor Seals were used for very short period of time and predominately for Registered Mail.



3-Mar-41 Bangkok Thailand – Calcutta India Registered Airmail prepaid 1 Baht 10 ST.

Censor Hand Stamp Thailand Type A Circle 3 black

Censor Wax Seal Calcutta Type 2B very early use - *Fewer than 15 Recorded Examples*

Censor Label Type 2A1 tied by Censor Hand Stamp Calcutta Type 3A



9-Apr-41 Bangkok – N. Hollywood USA Registered ppd. 50 Satang

Thai Censor Type A Circle 3 in lesser used black color

Censor Red Wax Seal Hong Kong Type S1 - *Fewer than 7 Recorded Examples*

Two Censor Hand Stamps Hong Kong Type 6 (27 & 62) - Censor Label Hong Kong Type 4c

Two US Customs Markings, SFO & N. Hollywood CDS arrival chops noting 54 days transit

Ex. Goldsmith

External Mails of Thailand – 1939 to 1942

Outbound Mail

1941 Thai Censored Mail



23-Apr-41 Bangkok to Philadelphia USA California Clipper via Sydney
Air Mail prepaid 1 Baht 75 Satang California Clipper Hand Stamp
Censor Hand Stamp Thailand Type B Circle 3 black
Not Opened By Censor Hand Stamp – Australia Type H2-9a



18-May-41 Bangkok Thailand – New Haven USA Air Mail ppd. 3 Baht 15 Satang
Two Censor Hand Stamps Hong Kong Type 6 (26 & 55) Censor Label Hong Kong Type 4C
Censor Hand Stamp Thailand Type A Circle 3 black
Air Transit #3 Marking - **Fewer than 3 Recorded Examples on Thai Cover**

External Mails of Thailand – 1939 to 1942

Inbound Mail

1940 Pre Thai Censorship Era



Reverse



19-Aug-40 Philippines – Bangkok Airmail ppd. 36 Centavos
Victoria Hong Kong CDS 24-Aug-40, Bangkok CDS 2-Sep-40
14 Days Transit for Air Mail
Censor Label Hong Kong Type 3A

External Mails of Thailand – 1939 to 1942

Inbound Mail

1940/41 – Thai Censorship Begins –

Covers with No Thai Censor Marks



13-Dec-40 Soerabaja DEI – Bangkok Thailand KLM Airmail ppd. 22.5 Cents

KLM Route Bandung to Lydda Service Operated July 1940 to Feb 1942

Singapore Routing Marks B & 20 – The Letter denotes the flight and the number the mailbag

Censor Hand Stamp Singapore Type 5B & Censor Label Singapore Type 4

Dutch East Indies Censor Hand Stamp & Label



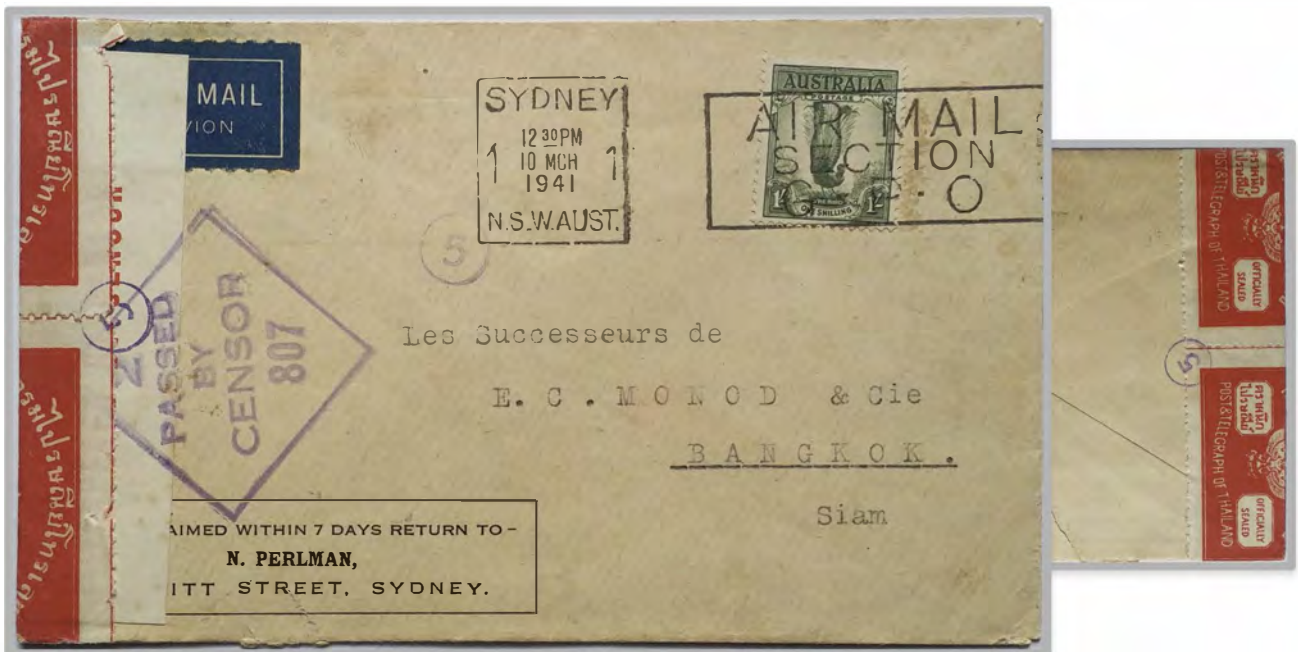
1941 Kuala Lumpur Malaya – Bangkok Thailand ppd. 12 Cents

Censor Hand Stamp Penang Type 2B & Censor Label Penang Type 4

External Mails of Thailand – 1939 to 1942

Inbound Mail

1941 Thai Censored Mail



10-Mar-41 Sydney Australia to Bangkok Thailand Air Mail ppd. 1 Shilling
Censor Hand Stamp Sydney Type H2-8a & Sydney Censor Label
Censor Hand Stamp Thailand Type A Circle 5 violet
Censor Label Thailand Type OX5

Image of full Censor Label on above Cover



Thailand had two primary Censor Labels
The Difference was in the use of different Thai characters noted in yellow
Above 2 Labels were most typical as they used
Thai Characters “**ซิน**” instead of Phibun Spelling “**สน**”

External Mails of Thailand – 1939 to 1942

Inbound Mail

Service Suspended Return to Sender



4-Jun-40 Zurich Switzerland to Bangkok Thailand Air Mail ppd. 80 Cents

Black Hand Stamp "über-via" handwritten 5

Censor Hand Stamp Calcutta Type 3A & Calcutta Censor Label 2A1

German Censor Label & Hand Stamp

Service Suspended Return to Sender Lisbon CDS 19-Mar-43 & Zurich CDS 24-Apr-43

1,054 Days in Transit



22-Sep-41 Anduze France to Bangkok Thailand 2.90 Francs

Censor Hand Stamp Bombay Type 3A & Bombay Censor Label 6B1

Service Suspended Return to Sender Hand Stamp

Retour A L'Envoyeur 97 – Handwritten 27-6-42 - 278 Days in Transit

External Mails of Thailand – 1939 to 1942

Inbound Mail

Service Suspended Return to Sender



29-Oct-41 Newark USA to Bangkok Thailand 5 Cents
Censor Hand Stamp Singapore Type 5B & Singapore Censor Label 4
Returned Service Suspended Hand Stamp via trans pacific San Pedro CA CDS 23-Apr-42
176 Days in Transit Back to US port of entry
Ex. Robert Johnson