

# POSTAGE

## General Issues

Printed by Rawdon, Wright, Hatch & Edson

1847

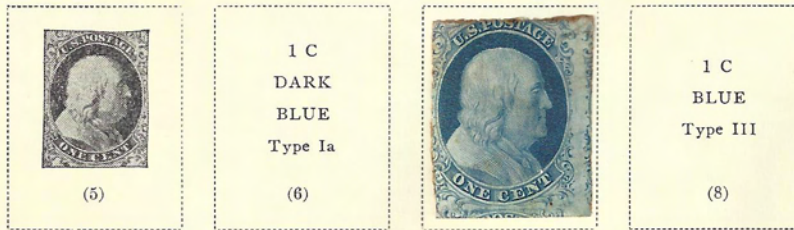
Imperforate



Printed by Toppan, Carpenter, Casilear & Co.

1851-56

Imperforate



(5)

1 C  
DARK  
BLUE  
Type Ia

(6)

1 C  
BLUE  
Type III

(8)



1 C  
PALE  
BLUE  
Type IIIa

(8A)



(12)



(13)

10 C  
GREEN  
Type IV

(16)





# POSTAGE

Printed by Toppan, Carpenter & Co.




1857-60

Perforated 15

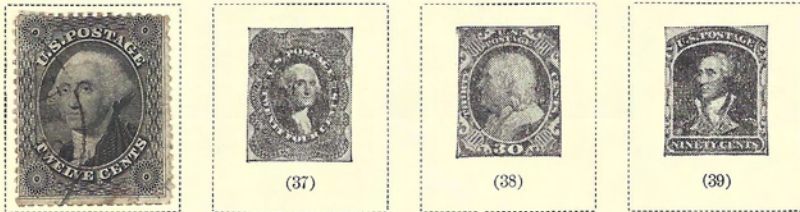
Same Designs as 1851-56 Issues 1 C BLUE Type I (18)	1 C BLUE Type Ia (19)	1 C BLUE Type II (20)
--	--------------------------------	--------------------------------

1 C BLUE Type III (21)		1 C BLUE Type IV (23)	
---------------------------------	---	--------------------------------	--



5 C BRICK RED Type I (27)		5 C INDIAN RED Type I (28A)			5 C BROWN Type II (30A)
---------------------------------------	---	---	---	--	----------------------------------

10 C GREEN Type I (31)	10 C GREEN Type II (32)	10 C GREEN Type III (33)	10 C GREEN Type IV (34)	10 C GREEN Type V (35)
---------------------------------	----------------------------------	-----------------------------------	----------------------------------	---------------------------------



(37)

(38)

(39)


# POSTAGE

Printed by the National Bank Note Co.

1861

First Issue

Perforated 12

Designs of Second Issue 1 C INDIGO  (55)	3 C BROWN ROSE  (56)	5 C BROWN  (57)	10 C DARK GREEN  (58)	  (59)
	24 C VIOLET  (60)	30 C RED ORANGE  (61)	90 C DULL BLUE  (62)	

1861-62

Second Issue

			3 C LAKE  (66)		
					

1861-66

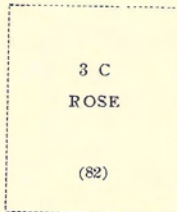
	3 C SCARLET  (74)		
			

# POSTAGE

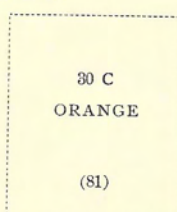
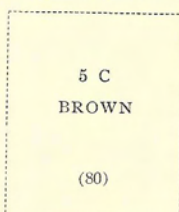
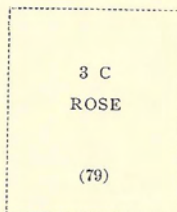
Printed by the National Bank Note Co.  
1867

Same Designs as 1861-66 Issues  
Embossed with Grills of Various Sizes  
Grill with Points Up

B. Grill measuring  
about 18x15 mm.



A. Grill covering the entire stamp

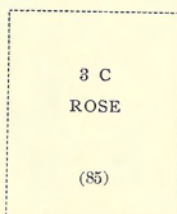
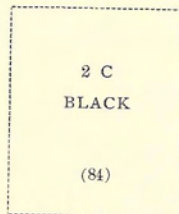


C. Grill measuring  
about 13x16 mm.

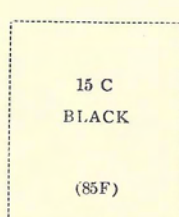
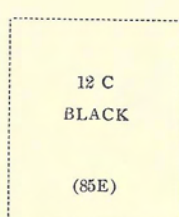
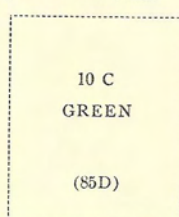
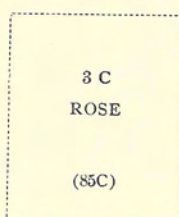
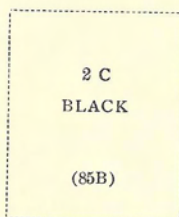
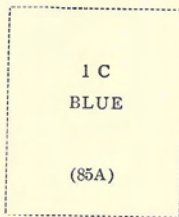


Grill with Points Down

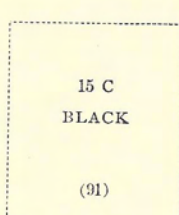
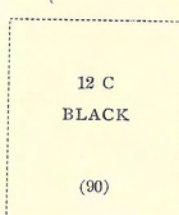
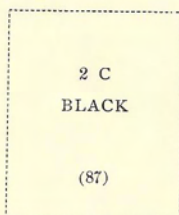
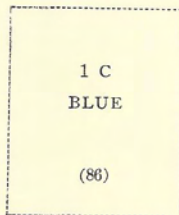
D. Grill measuring about 12x14 mm.



Z. Grill measuring about 11x14 mm.

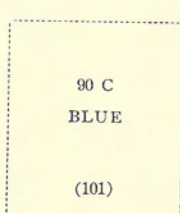
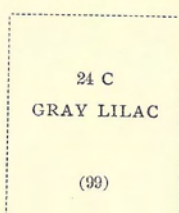
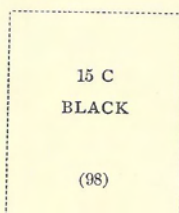


E. Grill measuring about 11x13 mm.



1867

F. Grill measuring about 9x13 mm.



# POSTAGE

Printed by the National Bank Note Co.

1869



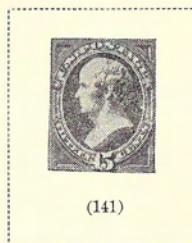
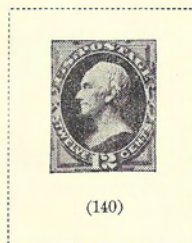
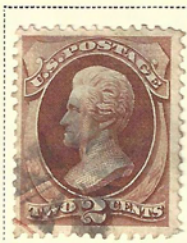
(122)

# POSTAGE

Printed by the National Bank Note Co.

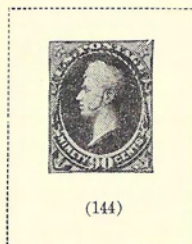
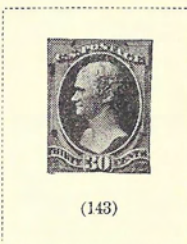
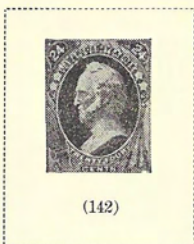
1870-71

With Grill



(140)

(141)



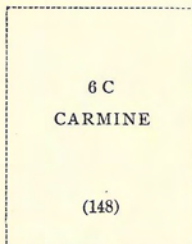
(142)

(143)

(144)

1870-71

Without Grill



6 C  
CARMINE

(148)

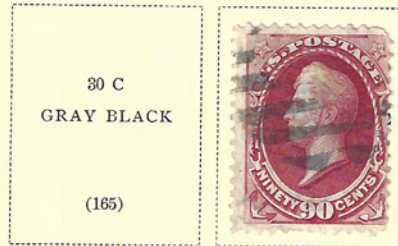


# POSTAGE

Printed by the Continental Bank Note Co.

1873

Same designs as issue of 1870-71 but with secret marks on the values from 1c to 15c



1875



# POSTAGE

Printed by the American Bank Note Co.

1879

Soft Porous Paper



1882



1881-82

Designs of Issue of 1873 Re-engraved



1883





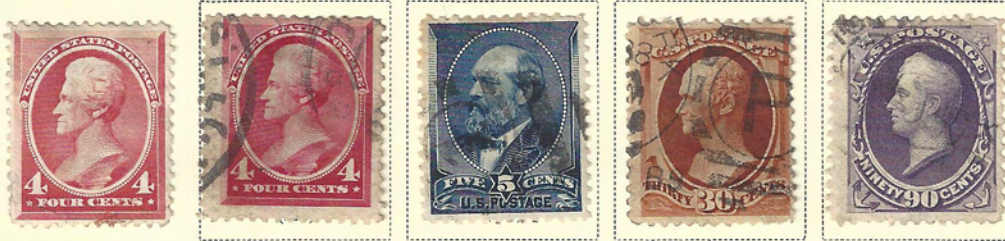
# POSTAGE

Printed by the American Bank Note Co,

1887



1888



1890-93

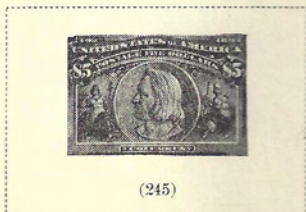
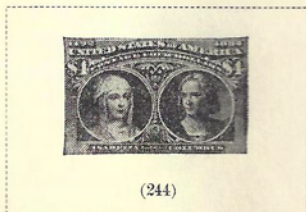


# POSTAGE

Printed by the American Bank Note Co.

## Columbian Exposition Issue

1893



15

regum

# POSTAGE

Since 1894 all postage stamps except Nos. 909 to 921 have been  
Engraved and Printed by the Bureau of Engraving and Printing

1894



\$ 1  
BLACK  
Type II

(261A)



(262)



(263)

# POSTAGE

Watermarked USPS

1895



50 C  
ORANGE

(275)



\$1  
BLACK  
Type II

(276A)

\$2  
DARK BLUE

(277)



1898



# POSTAGE

## Trans-Mississippi Exposition Issue

Watermarked USPS

1898



70



(208)

# POSTAGE

Pan-American Exposition Issue

Watermarked USPS

1901

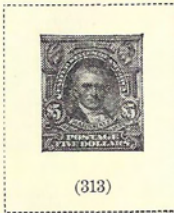


19

# POSTAGE

## Watermarked USPS

1902-03



1906-08

Imperforate



1903-06



# POSTAGE

Watermarked **USPS**

1904

## Louisiana Purchase Exposition Issue



1907

## Jamestown Exposition Issue



1908-09

Perforated 12



\$1  
VIOLET  
BROWN

(342)



# POSTAGE

Watermarked **USPS**

1908-09

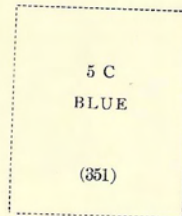
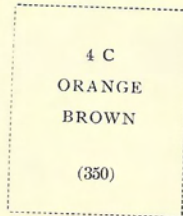
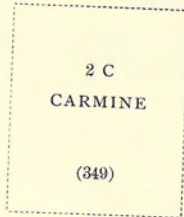
Imperforate



## COIL STAMPS

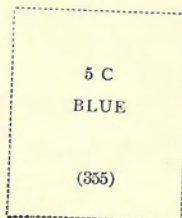
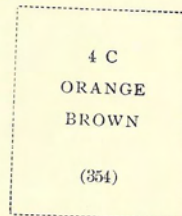
1908-10

Perforated 12 Horizontally



1909

Perforated 12 Vertically



# POSTAGE

Watermarked USPS

1909

On Bluish Experimental Paper



3 C  
DEEP  
VIOLET  
  
(359)

4 C  
ORANGE  
BROWN  
  
(360)



6 C  
RED  
ORANGE  
  
(362)

8 C  
OLIVE  
GREEN  
  
(363)

10 C  
YELLOW  
  
(364)

13 C  
BLUE  
GREEN  
  
(365)

15 C  
PALE  
ULTRA-  
MARINE  
  
(366)

1909

Perforated 12

Lincoln Memorial Issue



Like 367  
2 C  
CARMINE  
  
(368)

Alaska-Yukon  
Pacific Exposition Issue



On Bluish Experimental Paper

Hudson-Fulton Issue



Like 372  
2 C  
CARMINE  
  
(373)

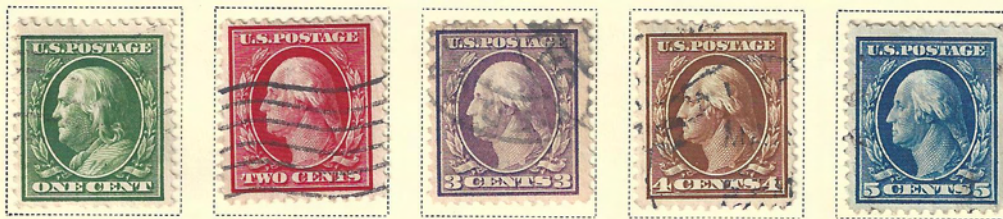


# POSTAGE

## Watermarked USPS

1910-11

Perforated 12



8 C  
OLIVE  
GREEN  
(380)



15 C  
PALE  
ULTRA-  
MARINE  
(382)

1911

Imperforate



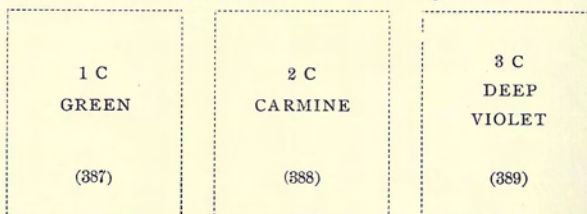
## COIL STAMPS

1910-11

Perforated 12 Horizontally



Perforated 12 Vertically

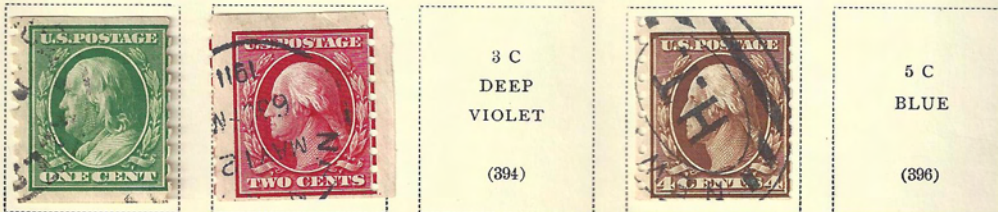


1910-13

Perforated 8½ Horizontally



Perforated 8½ Vertically



# POSTAGE

Watermarked USPS

1913

Panama-Pacific Exposition Issue

Perforated 12



1914-15

Perforated 10



1912-14

Perforated 12

Perforate



## COIL STAMPS

Perforated 8½ Horizontally

Perforated 8½ Vertically



Perforated 12



# POSTAGE

Watermarked **USPS**

1912

50 C VIOLET  (422)	<i>Franklin</i> \$1 VIOLET BROWN  (423)
-----------------------------	--




Watermarked **USPS**

1914-15

Perforated 10

		3 C DEEP VIOLET Type I  (426)
---	---	---



		15 C GRAY  (437)	
---	---	---------------------------	--

30 C ORANGE RED  (439)	
---------------------------------	---

# POSTAGE

Watermarked USPS

1914-16

Flat Plate Printing  
COIL STAMPS

Perforated 10 Horizontally



2 C  
CARMINE  
(442)

Perforated 10 Vertically



3 C  
VIOLET  
(445)



5 C  
BLUE  
(447)

Rotary Press Printing  
COIL STAMPS

Perforated 10 Horizontally



Type I  
2 C  
RED  
(449)



Perforated 10 Vertically



Type I  
3 C  
VIOLET  
(456)



5 C  
BLUE  
(458)

Imperforate

Type I  
2 C  
CARMINE  
(459)

Flat Plate Printing

1915

Watermarked USPS

Perforated 10

\$1  
VIOLET  
BLACK  
(460)

1915

Watermarked USPS

Perforated 11



# POSTAGE

Unwatermarked  
1916-17  
Perforated 10



7 C  
BLACK

(469)



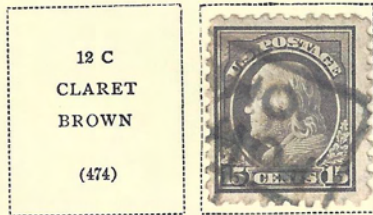
9 C  
SALMON RED

(471)



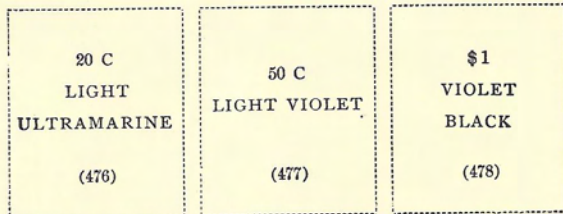
11 C  
DARK GREEN

(473)



12 C  
CLARET  
BROWN

(474)



20 C  
LIGHT  
ULTRAMARINE

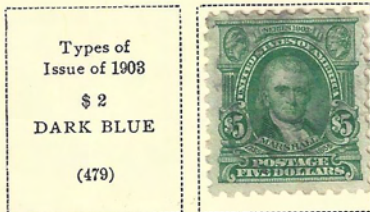
(476)

50 C  
LIGHT VIOLET

(477)

\$1  
VIOLET  
BLACK

(478)



Types of  
Issue of 1908  
\$ 2  
DARK BLUE

(479)

# POSTAGE

Unwatermarked

1917

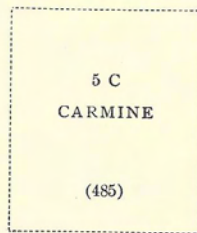
Flat Plate Printing

5c Error in Plate of 2c.

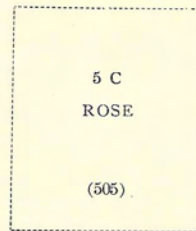
Perforated 10



Imperforate



Perforated 11





# POSTAGE

Unwatermarked

1916-17

Imperforate



Type Ia  
2 C  
CARMINE

(482A)

Type I

3 C

VIOLET

(483)

Type II

3 C

VIOLET

(484)

Rotary Press

COIL STAMPS

1916-22

Perforated 10 Horizontally



Perforated 10 Vertically



Type II  
2 C  
CARMINE

(491)



# POSTAGE

Flat Plate Printing  
Unwatermarked

1917-19

Perforated 11



# POSTAGE

Watermarked USPS

1917

Flat Plate Printing

Perforated 11



1918

Watermarked

Perforated 11



\$5

DEEP GREEN  
AND BLACK

(524)

Unwatermarked

1918-20

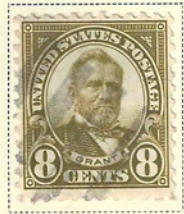
Offset Printing

Perforated 11



# POSTAGE

Unwatermarked  
1922-25  
Perforated 11



# POSTAGE

Unwatermarked  
1923-29  
Rotary Press Printing  
Coil Stamps  
Perforated 10 Vertically



Perforated 10 vertically

Perforated 10 horizontally



1923  
Harding Memor

Flat Plate Printing

Perforated 11

Imperforate



Flat Plate Printing  
Perforated 11  
1924

Huguenot-Walloon Tercentenary Issue



1925

Lexington-Concord Issue



# POSTAGE

Unwatermarked  
ROTARY PRESS COIL STAMPS  
1923-29

Perforated 10 Vertically



1½ C  
BROWN (598)



Type II  
2 C  
CARMINE (599A)



4 C  
YELLOW  
BROWN (601)



Perforated 10 Horizontally



# POSTAGE

Battle of White Plains Issue  
International Philatelic Exhibition

October 16th to 23rd, 1926

New York, N. Y.

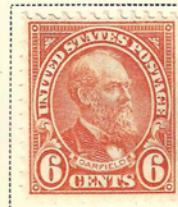


# POSTAGE

Unwatermarked  
1926-34  
Rotary Press Printing  
Imperforate



Perforated 11x10½



Flat Plate Printing  
Perforated 11  
1927

Vermont Sesquicentennial Issue



Burgoyne Campaign Issue



1928

Valley Forge Issue





# POSTAGE

Unwatermarked  
1928

Rotary Press Printing  
Perforated 11x10½

## Battle of Monmouth Issue



## Hawaii Sesquicentennial Issue



Flat Plate Printing  
Perforated 11

## Aeronautics Conference Issue



1929

## George Rogers Clark Commemorative Issue



1929

Rotary Press Printing  
Perforated 11x10½



# POSTAGE

Unwatermarked

1929

## Electric Light Golden Jubilee Issue

Flat Plate Printing

Perforated 11



Rotary Press Printing

Perforated 11x10½



Rotary Press Coil Stamp

Perforated 10 Vertically



Flat Plate Printing

Perforated 11

## Sullivan Expedition Issue



Rotary Press Printing

Perforated 11x10½

Regular Issue  
1923-27  
Overprinted  
**Kans.**  
1 C  
GREEN  
(658)



4 C  
YELLOW  
BROWN  
(673)

5 C  
DEEP BLUE  
(674)

6 C  
RED ORANGE  
(675)

7 C  
BLACK  
(676)

8 C  
OLIVE GREEN  
(677)

9 C  
LIGHT ROSE  
(678)

10 C  
ORANGE  
YELLOW  
(679)

# POSTAGE

Unwatermarked  
1929  
Flat Plate Printing  
Perforated 11

## Battle of Fallen Timbers Issue



## Ohio River Canalization Issue



1930

## Massachusetts Bay Colony Issue



## Carolina-Charleston Issue



Rotary Press Printing  
Perforated 11x10½



Rotary Press Coil Stamps  
Perforated 10 Vertically



Flat Plate Printing  
Perforated 11

## Braddock's Field Issue



## Von Steuben Issue



# POSTAGE

Unwatermarked  
1931

FLAT PLATE PRINTING

Perforated 11

Pulaski Issue



ROTARY PRESS PRINTING

Perforated 11x10½



Perforated 10½x11



FLAT PLATE PRINTING

Perforated 11

Red Cross Issue



Yorktown Issue



# POSTAGE

Unwatermarked

1932

Rotary Press Printing

Perforated 11x10½

## Washington Bicentennial Issue



Flat Plate Printing

Perforated 11

## Olympic Winter Games Issue



Rotary Press Printing

Perforated 11x10½

## Arbor Day Issue



## 10th Olympic Games Issue



# POSTAGE

Unwatermarked

1932

Rotary Press Printing

Perforated 11x10½



Rotary Press Coil Stamps

Perforated 10 Vertically



Perforated 10 Horizontally



Flat Plate Printing

Perforation 11

William Penn Issue



Daniel Webster Issue



Georgia Bicentennial Issue

1933



# POSTAGE

Unwatermarked  
1933  
Rotary Press Printing  
Perforated 10½x11  
Peace Commemorative Issue



## Century of Progress Issue



Flat Plate Printing

Imperforate



Rotary Press Printing

## National Recovery Administration Issue

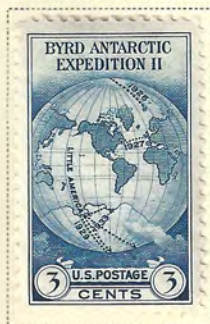
Perforated 10½x11



Flat Plate Printing

## Byrd Antarctic Issue

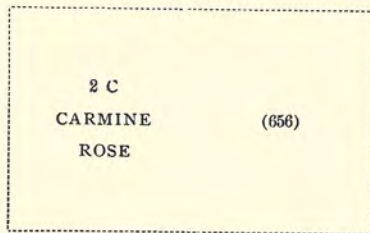
Perforated 11



# POSTAGE

Unwatermarked  
ROTARY PRESS COIL STAMPS  
Perforated 10 Vertically  
1929

Electric Light Golden Jubilee Issue



1930



1932



Perforated 10 Horizontally





# POSTAGE

Century of Progress Issue  
American Philatelic Society Exhibition  
August, 1933  
Chicago, Illinois



# POSTAGE

Century of Progress Issue  
American Philatelic Society Exhibition  
August, 1933  
Chicago, Illinois

UNDER AUTHORITY OF JAMES A. FARLEY, POSTMASTER GENERAL AT A CENTURY OF PROGRESS

PRINTED BY THE TREASURY DEPARTMENT, BUREAU OF ENGRAVING AND PRINTING



IN COMPLIMENT TO THE AMERICAN PHILATELIC SOCIETY FOR ITS CONVENTION AND EXHIBITION

CHICAGO, ILLINOIS, AUGUST 1933. PLATE NO. 21160

# POSTAGE

National Stamp Exhibition Issue

February 10th to 18th, 1934

New York, N. Y.



# POSTAGE

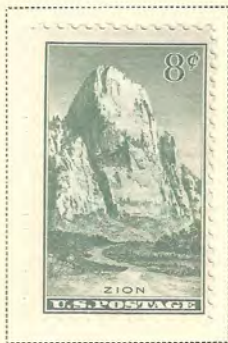
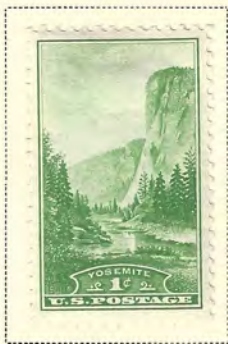
## National Parks Issue

Unwatermarked

1934

Flat Plate Printing

Perforated 11



## National Exhibitions Issues

Imperforate



# POSTAGE

American Philatelic Society Issue

Atlantic City, New Jersey, August 27 to 31, 1934



Trans-Mississippi Philatelic Exhibition Issue

Omaha, Nebraska, October 8 to 13, 1934



# POSTAGE

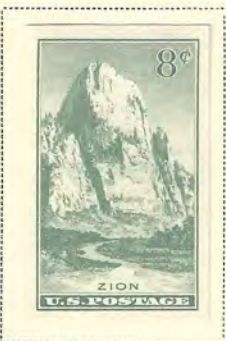
Special Printing

Unwatermarked

1935

Imperforate

Ungummed



# POSTAGE

Special Printing

Unwatermarked

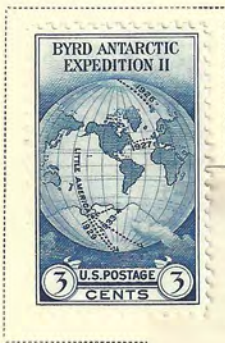
Ungummed

1935

Perforated 10½ x 11



Perforated 11



Imperfor



ATE NO. 21145



PRINTING

UNDER AUTHORITY



N.Y., FEBRUARY 1  
ATE NUMBER 211



UNDER AUTHORITY  
FEDERAL BUILDING, POSTMASTER



# POSTAGE

Special Printing

Unwatermarked

Ungummed

1935





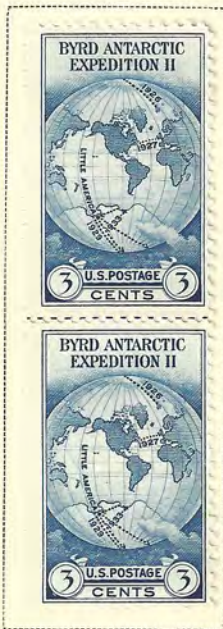
# POSTAGE

Special Printing  
Unwatermarked  
Ungummed  
1935



ATE NO. 21145

NERAL AT A CENTURY



AND EXHIBITION

OF PROGRESS

IN COMPLIMENT



N.Y., FEBRUARY  
ATE NUMBER 211

DER AUTHORITY  
RLEY, POSTMAST



PRINTED BY  
BUREAU OF

ATLANTIC CITY, NEW J  
PLATE NUM

UNDER AUT  
JAMES A. FARLEY, PO

DEPARTMENT,  
D PRINTING.



BER, 1934.  
41

OF  
ER GENERAL

ON AND CONVENTION.

PHILATELIC EXPOSITI

# POSTAGE

Unwatermarked  
1938  
Rotary Press Printing  
Perforated 11x10½



Flat Plate Printing  
Perforated 11



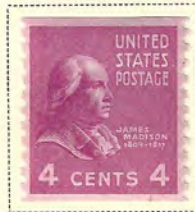
# POSTAGE

Unwatermarked

1939

Rotary Press Printing - Coil Stamps

Perforated 10 Vertically



Perforated 10 Horizontally



# POSTAGE

Unwatermarked

1954-65

Rotary Press or Flat Plate Printing

Perforated 11 x 10½, 10½ x 11



Perforated 11



ROTARY PRESS COIL STAMPS

Perforated 10 Vertically



Perforated 10 Horizontally



# AIR POST STAMPS

1918

Unwatermarked

Perforated 11



16 C  
GREEN  
(C2)



1923



1926-27



1927



1928



1930



# AIR POST STAMPS

1938

Unwatermarked  
Flat Plate Printing  
Perforated 11



1939

Trans - Atlantic Issue



1941-44

Rotary Press Printing  
Perforated 11x10½



# SPECIAL DELIVERY

Unwatermarked  
Perforated 12

1885



1888



1893



1894



Watermarked **USPS**

Perforated 12

1895



1908



1902



Watermarked **USPS**

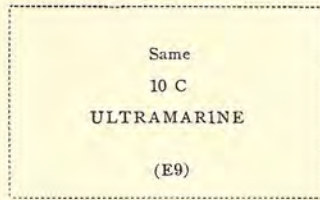
Perforated 12

1911



Perforated 10

1914



Unwatermarked

Perforated 10

1916



Perforated 11

1917



Perforated 11

1922



1925

Perforated 11



1927

Rotary Press Printing

Perforated 11x10½



# POSTAGE DUE

Unwatermarked

1931-36

Rotary Press Printing

Perforation 11x10½, 10½x11



\$1  
SCARLET

(J87)

1959






# OFFICIAL

Printed by the Continental Bank Note Co.


1873

## Department of Agriculture

 <p>(01)</p>	<p>Busts same as on Postal Issues of 1870-71</p> <p>2 C YELLOW</p> <p>(02)</p>	<p>3 C YELLOW</p> <p>(03)</p>	<p>6 C YELLOW</p> <p>(04)</p>	<p>10 C YELLOW</p> <p>(05)</p>
---	--	-----------------------------------	-----------------------------------	------------------------------------


<p>12 C YELLOW</p> <p>(06)</p>	<p>15 C YELLOW</p> <p>(07)</p>	<p>24 C YELLOW</p> <p>(08)</p>	<p>30 C YELLOW</p> <p>(09)</p>
------------------------------------	------------------------------------	------------------------------------	------------------------------------

## Executive Department

	<p>2 C CARMINE</p> <p>(011)</p>	<p>3 C VIOLET ROSE</p> <p>(012)</p>	<p>6 C CARMINE</p> <p>(013)</p>	<p>10 C CARMINE</p> <p>(014)</p>
--	-------------------------------------	---	-------------------------------------	--------------------------------------

## Department of the Interior

				<p>10 C VERMILION</p> <p>(019)</p>
---	---	---	--	--

<p>12 C VERMILION</p> <p>(020)</p>	<p>15 C VERMILION</p> <p>(021)</p>	
--	--	--




<p>30 C VERMILION</p> <p>(023)</p>	
--	---

# OFFICIAL

Printed by the Continental Bank Note Co.

1873


## Post Office Department

	2 C BLACK  (048)	3 C BLACK  (049)		10 C BLACK  (051)	
	15 C BLACK  (053)	24 C BLACK  (054)	30 C BLACK  (055)	30 C BLACK  (056)	

## State Department

	2 C DARK GREEN  (058)	3 C BRIGHT GREEN  (059)	6 C BRIGHT GREEN  (060)	7 C DARK GREEN  (061)	10 C DARK GREEN  (062)
--	--------------------------------	----------------------------------	----------------------------------	--------------------------------	---------------------------------

12 C DARK GREEN  (063)		24 C DARK GREEN  (065)		90 C DARK GREEN  (067)
---------------------------------	---	---------------------------------	--	---------------------------------

	\$5 GREEN AND BLACK  (069)	\$10 GREEN AND BLACK  (070)	\$20 GREEN AND BLACK  (071)
---	--	---	---


# OFFICIAL

Printed by the Continental Bank Note Co.

1873

## Treasury Department


 <p>(072)</p>	 <p>TWO CENTS</p>	 <p>THREE CENTS</p>	6 C BROWN  (075)	7 C BROWN  (076)
--	--	--	---------------------------	---------------------------


10 C BROWN  (077)	12 C BROWN  (078)	 <p>12 CENTS</p>	24 C BROWN  (080)
----------------------------	----------------------------	---	----------------------------

30 C BROWN  (081)	90 C BROWN  (082)
----------------------------	----------------------------

## War Department

 <p>ONE CENT</p>	 <p>TWO CENTS</p>	 <p>THREE CENTS</p>	 <p>SIX CENTS</p>	7 C ROSE  (087)
---	--	--	---	--------------------------

10 C ROSE  (088)	12 C ROSE  (089)	 <p>12 CENTS</p>	24 C ROSE  (091)
---------------------------	---------------------------	---	---------------------------

 <p>THIRTY CENTS</p>	90 C ROSE  (093)
---	---------------------------

# HUNTING PERMIT STAMPS

Department of Agriculture  
 Unwatermarked  
 Flat Plate Printing  
 Perforated 11

1934



1935



1936



1937



1938



Department of the Interior

1940



1941



# HUNTING PERMIT STAMPS

Department of the Interior

Unwatermarked

Flat Plate Printing

Perforated 11

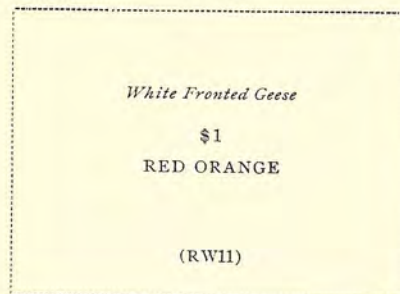
1942



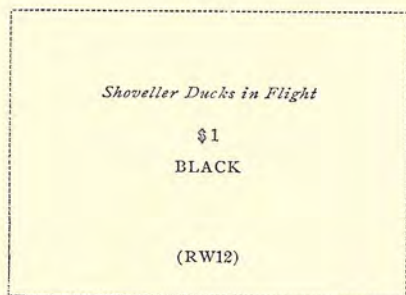
1943



1944



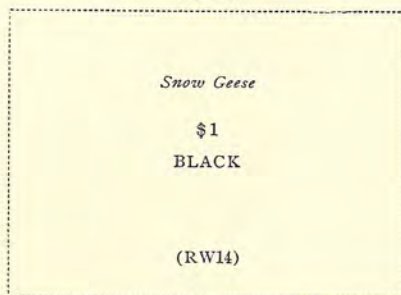
1945



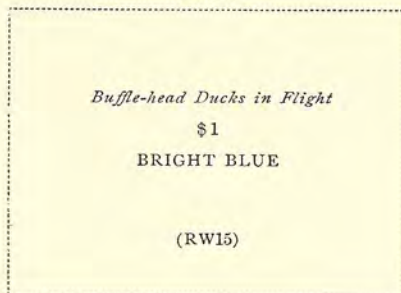
1946



1947



1948



# PARCEL POST

1912-13

Watermarked USPS



6164

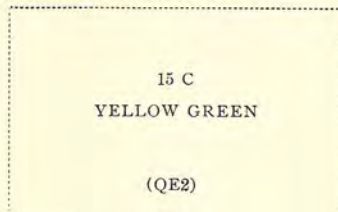
# SPECIAL HANDLING

1925-29

Unwatermarked

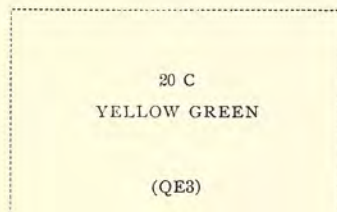


(QE1)



15 C  
YELLOW GREEN

(QE2)



20 C  
YELLOW GREEN

(QE3)



25 C  
YELLOW GREEN

(QE4)

# PARCEL POST POSTAGE DUE

1912

Watermarked USPS

Perforated 12

