



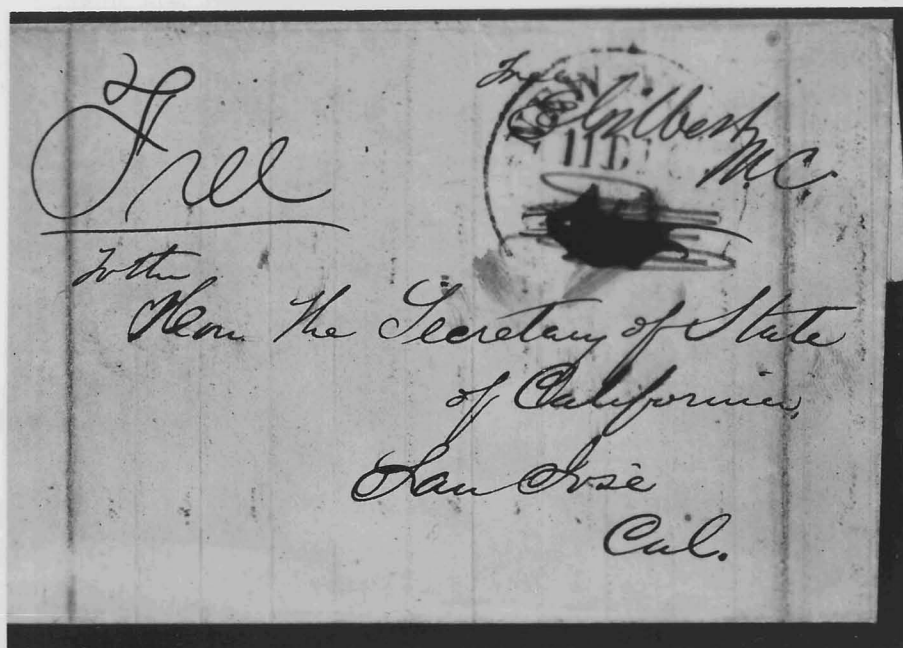


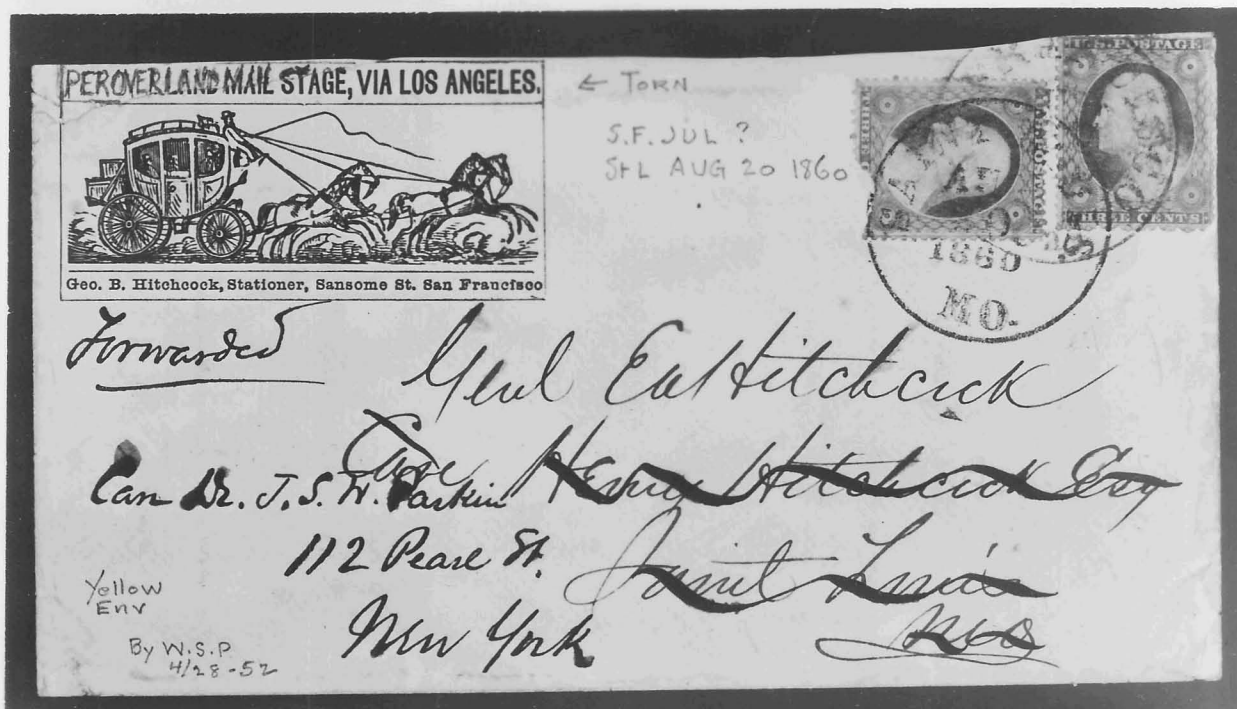
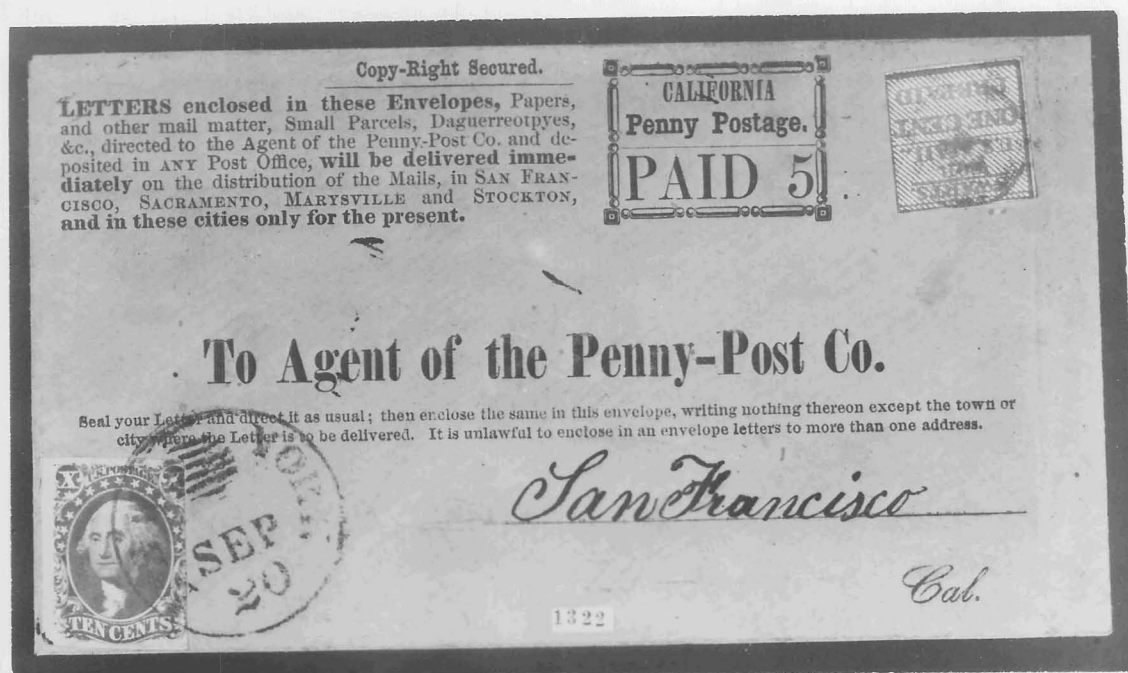
To the Clerk of the Circuit Court for  
St. Louis County  
St. Louis, Mo.  
of the 9th 1845  
to be paid by  
of Court  
J. Van Kegan, do  
Illinois

39



41





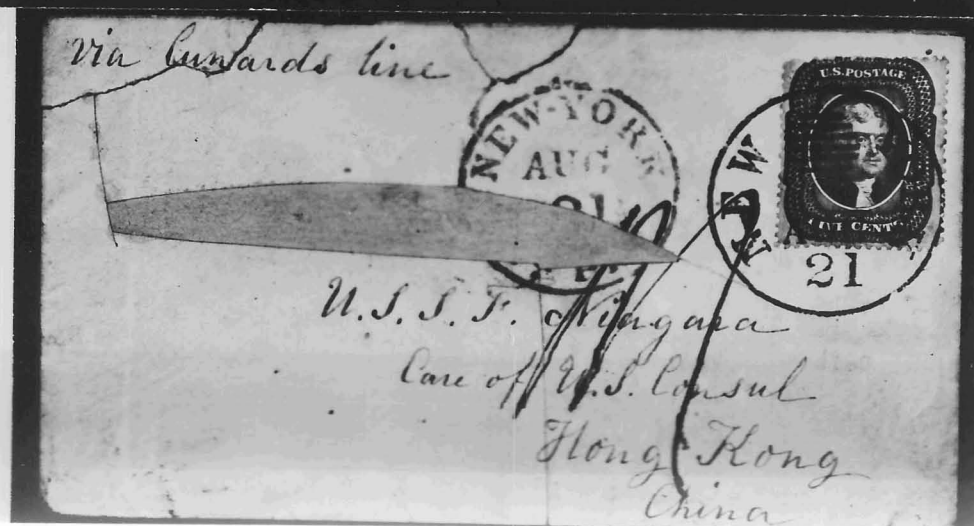
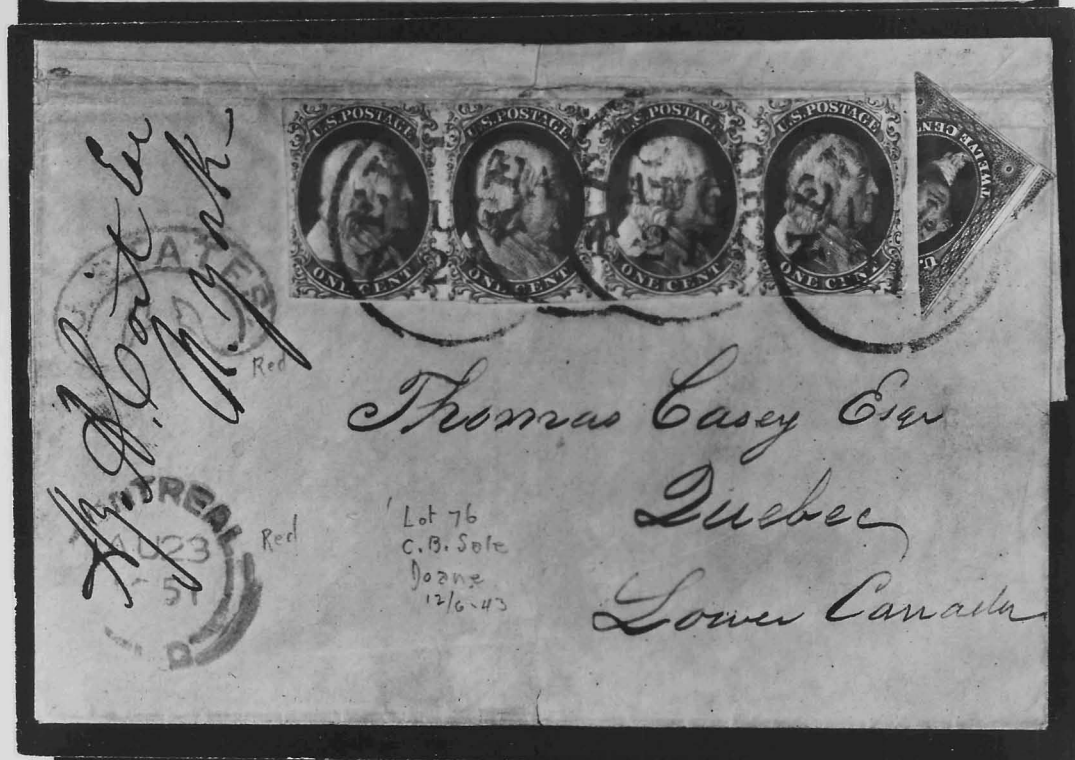
44



45



Monsieur Jean Seguiniere de Lignas  
Chateau de Portets



# TABLE OF POSTAGES TO FOREIGN COUNTRIES.

# FOREIGN MISCELLANY.

The Asterisk (\*) indicates that in cases where it is prefixed, unless the letter be registered, prepayment is optional; in all other cases, prepayment is required.

Rates of Postage on Letters.

The Asterisk (\*) indicates that in cases where it is prefixed, unless the letter be registered, prepayment is optional; in all other cases, prepayment is required.

Rates of Postage on Letters.

The Asterisk (\*) indicates that in cases where it is prefixed, unless the letter be registered, prepayment is optional; in all other cases, prepayment is required.

Rates of Postage on Letters.

Rates of Postage on Letters.

TO THE BRITISH NORTH AMERICAN PROVINCES.

NOTE.—Five cents the single letter, of half ounce or under, must be added to the rates named in this table by "British mail," "via England," or "via London," respectively, if the letter is from California, Oregon, or Washington.

NOTE.—Five cents the single letter, of half ounce or under, must be added to the rates named in this table by "British mail," "via England," or "via London," respectively, if the letter is from California, Oregon, or Washington.

NOTE.—Five cents the single letter, of half ounce or under, must be added to the rates named in this table by "British mail," "via England," or "via London," respectively, if the letter is from California, Oregon, or Washington.

NOTE.—Five cents the single letter, of half ounce or under, must be added to the rates named in this table by "British mail," "via England," or "via London," respectively, if the letter is from California, Oregon, or Washington.

NOTE.—Five cents the single letter, of half ounce or under, must be added to the rates named in this table by "British mail," "via England," or "via London," respectively, if the letter is from California, Oregon, or Washington.

NOTE.—Five cents the single letter, of half ounce or under, must be added to the rates named in this table by "British mail," "via England," or "via London," respectively, if the letter is from California, Oregon, or Washington.

NOTE.—Five cents the single letter, of half ounce or under, must be added to the rates named in this table by "British mail," "via England," or "via London," respectively, if the letter is from California, Oregon, or Washington.

NOTE.—Five cents the single letter, of half ounce or under, must be added to the rates named in this table by "British mail," "via England," or "via London," respectively, if the letter is from California, Oregon, or Washington.

COUNTRIES.	Not exceeding quarter ounce.	Not exceeding half ounce.	Newspapers.	Pamphlets per ounce.
Acapulco.	Cts. 20	Cts. 20	2	1
Aden, British mail, via Southampton.	30	40	4	8
do do via Marseilles.	39	45	8	
do French mail.	30	60		
Adrianople, French mail.	30	60		
Africa (West Coast), British mail.	30	60		
Alexandretta, Prussian closed mail.	30	60	2	1
do French mail.	30	60	2	1
do open mail, via England, by Am. pkt.	30	60	2	1
do do by Brit. pkt.	30	60	2	1
Alexandria, Prussian closed mail.	30	60	2	1
do by Bremen or Hamburg mail.	30	60	2	1
do French mail.	30	60	2	1
do open mail, via England, by Amn. pkt.	30	60	2	1
do do by British pkt.	30	60	2	1
Algeria, French mail.	30	60	2	1
Altona, Prussian closed mail.	30	60	2	1
do by Bremen or Hamburg mail.	30	60	2	1
do French mail.	30	60	2	1
Antivari, French mail.	30	60	2	1
Arabia, British mail, via Southampton.	30	60	2	1
do do via Marseilles.	30	60	2	1
Argentine Republic, via England.	30	60	2	1
do do via France, in French mail.	30	60	2	1
do from Bordeaux.	30	60	2	1
Ascension, via England.	30	60	2	1
Aspinwall, for distances not exceeding 2,500 miles.	30	60	2	1
do for distances exceeding 2,500 miles.	30	60	2	1
Australia, British mail, via Southampton.	30	60	2	1
do do via Marseilles.	30	60	2	1
do by private ship from N. York or Boston.	30	60	2	1
do French mail.	30	60	2	1
do by Bremen or Hamburg mail, via Marseilles and Suez.	30	60	2	1
do by Bremen and Hamburg mail, via Trieste.	30	60	2	1
Austria and its States, Prussian closed mail.	30	60	2	1
do do do do.	30	60	2	1
do do by Bremen or Hamburg mail.	30	60	2	1
do do French mail.	30	60	2	1
Azores Island, British mail, via Portugal.	30	60	2	1
Baden, Prussian closed mail.	30	60	2	1
do Bremen or Hamburg mail.	30	60	2	1
do French mail.	30	60	2	1
Bahamas, by direct steamer from New York.	30	60	2	1
Bangkok, Siam, via Southampton.	30	60	2	1
do do via Marseilles.	30	60	2	1
Batavia, British mail, via Southampton.	30	60	2	1
do do via Marseilles.	30	60	2	1
do French mail.	30	60	2	1
Bavaria, Prussian closed mail.	30	60	2	1
do do when prepaid.	30	60	2	1
do by Bremen or Hamburg mail.	30	60	2	1
do French mail.	30	60	2	1
Belgium, French mail.	30	60	2	1
do closed mail, via England.	30	60	2	1
do open mail, via London, by American pkt.	30	60	2	1
do do do by British packet.	30	60	2	1
do do do by American pkt.	30	60	2	1
do do do by British packet.	30	60	2	1
do by French mail.	30	60	2	1
Beyrout, Prussian closed mail.	30	60	2	1
do French mail.	30	60	2	1
Bogota, New Granada.	30	60	2	1
Bolivia.	30	60	2	1
Borneo, British mail, via Southampton.	30	60	2	1
do do via Marseilles.	30	60	2	1
do French mail.	30	60	2	1
Bourbon, British mail, via Southampton.	30	60	2	1
do do via Marseilles.	30	60	2	1
do French mail.	30	60	2	1
Brazil, via England.	30	60	2	1
do via France, in French mail from Bordeaux.	30	60	2	1
Bremen, Prussian closed mail.	30	60	2	1
do do do when prepaid.	30	60	2	1
do Bremen mail.	30	60	2	1
do Hamburg mail.	30	60	2	1
do French mail.	30	60	2	1
British North American Provinces, when distance does not exceed 3,000 miles.	30	60	2	1
British North American Provinces, when distance does exceed 3,000 miles.	30	60	2	1
Brunswick, Prussian mail.	30	60	2	1
do do when prepaid.	30	60	2	1
do by Bremen or Hamburg mail.	30	60	2	1
do French mail.	30	60	2	1

COUNTRIES.	Not exceeding quarter ounce.	Not exceeding half ounce.	Newspapers.	Pamphlets per ounce.
Galatz, open mail, via London, by American pkt.	21	21	2	2
do do do by British packet.	21	21	2	2
Gallipoli, Prussian closed mail.	30	60	2	1
do French mail.	30	60	2	1
Gambia, via England.	30	60	2	1
Gandahara, via England.	30	60	2	1
German States, Prussian closed mail.	30	60	2	1
do French mail.	30	60	2	1
do Bremen mail.	30	60	2	1
do (except Luxembourg), by Ham'g mail.	30	60	2	1
Gibraltar, French mail.	30	60	2	1
do open mail, via London, by American pkt.	30	60	2	1
do do by British packet.	30	60	2	1
Great Britain and Ireland, (California, Oregon, or Washington excepted) do by British packet.	30	60	2	1
Greece, Prussian closed mail.	30	60	2	1
do French mail.	30	60	2	1
do by Bremen or Hamburg mail.	30	60	2	1
do open mail, via London, by American pkt.	30	60	2	1
do do do by British packet.	30	60	2	1
Hamburg, by Hamburg mail, direct from N. York.	30	60	2	1
do Bremen mail.	30	60	2	1
do Prussian closed mail.	30	60	2	1
do do when prepaid.	30	60	2	1
do French mail.	30	60	2	1
Hanover, Prussian closed mail.	30	60	2	1
do by Bremen or Hamburg mail.	30	60	2	1
do French mail.	30	60	2	1
Havana—see Cuba.	30	60	2	1
Hayti, via England.	30	60	2	1
Heligoland, Island of, by British mail, in Am. pkt.	30	60	2	1
do do do in Brit. ship.	30	60	2	1
do do via England, by private ship.	30	60	2	1
Holland, French mail.	30	60	2	1
do open mail, via London, by American pkt.	30	60	2	1
do do do by British packet.	30	60	2	1
Holstein, Prussian closed mail.	30	60	2	1
do by Bremen or Hamburg mail.	30	60	2	1
do French mail.	30	60	2	1
Honduras.	30	60	2	1
Hong Kong, Brit. mail via Marseilles.	30	60	2	1
do do do via Southampton.	30	60	2	1
do do by French mail.	30	60	2	1
do by Bremen or Hamburg mail.	30	60	2	1
do Prussian closed mail.	30	60	2	1
India Archipelago, French mail.	30	60	2	1
do British mail, via Marseilles.	30	60	2	1
Ineboli, French mail.	30	60	2	1
Ionian Islands, Prussian closed mail.	30	60	2	1
do French mail.	30	60	2	1
do British mail.	30	60	2	1
Italy—see Sardinian States, Lombardy, Modena, Parma, Tuscany, Papal States, and Two Sicilies.	30	60	2	1
Janina, by French mail.	30	60	2	1
Java, British mail, via Southampton.	30	60	2	1
do do via Marseilles.	30	60	2	1
do French mail.	30	60	2	1
Jaffa, Prussian closed mail.	30	60	2	1
do French mail.	30	60	2	1
do open British mail, by American packet.	30	60	2	1
do do do by British packet.	30	60	2	1
Japan, British mail, via Southampton.	30	60	2	1
do do do via Marseilles.	30	60	2	1
do French mail.	30	60	2	1
Jerusalem, British mail.	30	60	2	1
do French mail.	30	60	2	1
Karikal, French mail.	30	60	2	1
Kermadec, French mail.	30	60	2	1
Labuan, British mail, via Southampton.	30	60	2	1
do do do via Marseilles.	30	60	2	1
do French mail.	30	60	2	1
Larnica, by French mail.	30	60	2	1
Laueburg, Prussian closed mail.	30	60	2	1
do by Bremen or Hamburg mail.	30	60	2	1
do French mail.	30	60	2	1
Latakia, Prussian closed mail.	30	60	2	1
do French mail.	30	60	2	1
Liberia, British mail.	30	60	2	1
Lombardy, Prussian closed mail.	30	60	2	1
do by Bremen or Hamburg mail.	30	60	2	1
do French mail.	30	60	2	1
Lubeck, Prussian closed mail.	30	60	2	1
do do do when prepaid.	30	60	2	1
do by Bremen or Hamburg mail.	30	60	2	1
do French mail.	30	60	2	1

COUNTRIES.	Not exceeding quarter ounce.	Not exceeding half ounce.	Newspapers.	Pamphlets per ounce.
Penang, British mail, via Marseilles.	21	21	2	2
do do do via Southampton.	21	21	2	2
do French mail.	30	60	2	1
Pern.	30	60	2	1
Philippine Islands, British mail, via Southampton.	30	60	2	1
do do do via Marseilles.	30	60	2	1
do do French mail.	30	60	2	1
Placentia, Prussian closed mail.	30	60	2	1
do by Bremen or Hamburg mail.	30	60	2	1
do French mail.	30	60	2	1
Poland, Prussian closed mail.	30	60	2	1
do by Bremen or Hamburg mail.	30	60	2	1
do French mail.	30	60	2	1
Pondicherry, French mail.	30	60	2	1
Portugal, British mail, via England.	30	60	2	1
do by Bremen or Hamburg mail.	30	60	2	1
do do by French mail, via Behobia.	30	60	2	1
do do do via Bordeaux and Lisbon.	30	60	2	1
Prevesa, Prussian closed mail.	30	60	2	1
do French mail.	30	60	2	1
Prince Edward's Island—see Brit. N. Am. Provs.	30	60	2	1
Prussia, Prussian closed mail.	30	60	2	1
do do do when prepaid.	30	60	2	1
do by Bremen or Hamburg mail.	30	60	2	1
do French mail.	30	60	2	1
Rhodes, Prussian closed mail.	30	60	2	1
do French mail.	30	60	2	1
Roman or Papal States, Prussian closed mail.	30	60	2	1
do do French mail.	30	60	2	1
do do Bremen or Hamburg mail.	30	60	2	1
Romagna, Prussian closed mail.	30	60	2	1
Russia, Prussian closed mail.	30	60	2	1
do by Bremen or Hamburg mail.	30	60	2	1
do French mail.	30	60	2	1
Rastchuck, by French mail.	30	60	2	1
Salonica, Prussian closed mail.	30	60	2	1
Samsoun, Prussian closed mail.	30	60	2	1
Sandwich Islands, by mail to San Francisco.	30	60	2	1
Sardinian States, Prussian closed mail.	30	60	2	1
do French mail.	30	60	2	1
do Bremen or Hamburg mail.	30	60	2	1
Savoy, District of.	30	60	2	1
Saxe-Altenburg, Prussian closed mail.	30	60	2	1
do by Bremen or Hamburg mail.	30	60	2	1
do French mail.	30	60	2	1
Saxe-Coburg-Gotha, Meiningen, and Weimar, Prussian mail.	30	60	2	1
do do do do Bre-	30	60	2	1
men or Hamburg mail.	30	60	2	1
do do do do Fr. mail.	30	60	2	1
Saxony, Kingdom of, Prussian closed mail.	30	60	2	1
do do do when prepaid.	30	60	2	1
do do by Bremen or Hamburg mail.	30	60	2	1
do French mail.	30	60	2	1
Schleswig, by Bremen or Hamburg mail.	30	60	2	1
do French mail.	30	60	2	1
do Prussian closed mail.	30	60	2	1
Scio, by French mail.	30	60	2	1
Scutari, (Asia), Prussian closed mail.	30	60	2	1
do do French mail.	30	60	2	1
do do open mail, via London, by Am. pkt.	30	60	2	1
do do do do by Brit. pkt.	30	60	2	1
Serres, by French mail.	30	60	2	1
Servia, by Prussian closed mail.	30	60	2	1
do (except Belgrade), French mail, via Austria.	30	60	2	1
Siam, British mail via Marseilles.	30	60	2	1
do do via Southampton.	30	60	2	1
Sicilies, The Two, Prussian mail.	30	60	2	1
do do French mail.	30	60	2	1
do do open mail, via Lond., by Am. pkt.	30	60	2	1
do do do do by Brit. pkt.	30	60	2	1
Singapore, British mail, via Southampton.	30	60	2	1
do do do via Marseilles.	30	60	2	1
do do French mail.	30	60	2	1
Sinope, open mail, via England, by American pkt.	30	60	2	1
do do do do by British packet.	30	60	2	1
do French mail.	30	60	2	1
do Prussian closed mail.	30	60	2	1
do by French mail.	30	60	2	1
Spain, British mail, by American packet.	30	60	2	1
do do do by British packet.	30	60	2	1
do French mail.	30	60	2	1
do by Bremen or Hamburg mail.	30	60	2	1
St. Thomas by U.S. Packet to Kingston, Jamaica.	30	60	2	1

COUNTRIES.	Not exceeding quarter ounce.	Not exceeding half ounce.	Newspapers.	Pamphlets per ounce.
Canada, New Brunswick, Cape Breton, Prince Edward's Island, Nova Scotia, and Newfoundland.	10	15	3	1

The rates by "French mail" are in full to destination, except to the following places, viz.: A den, Batavia, Ceylon, China, cities of Turkey in Europe, except as herein mentioned, viz Austria, countries to which correspondence can be sent via Suez, countries beyond seas via France other than those enumerated, East Indies, Gibraltar, Hong Kong, Java, Mauritius, Montenegro, Penang, Portugal, Isle of Reunion, San Francisco, Shanghai, Singapore, and Spain. The limit of prepayment to Spain, Portugal, and Gibraltar, is Behobia; to Servia, (except Belgrade), Montenegro, and cities of Turkey in Europe, except as herein mentioned, "via Austria"; the frontier of Turkey and Austria; to A den, East Indies, Ceylon, China, and other countries via Suez, the seaports of the Indies or of the sea of China to which the English packets ply; and to places beyond seas, other than those designated, the limit is the port of arrival in the country of destination. Correspondence forwarded by the mails to Moldavia, Wallachia, and Turkey in Europe, by way of France and Austria; but the postage thereon must in all cases be paid at the place of destination.

On pamphlets and magazines, to or from the West coast of South America, the United States postage is four cents; and to or from all other foreign countries, (except Great Britain and the British North American Provinces), one cent an ounce or fraction of an ounce: to be collected in all cases in the United States.

Newspapers and periodicals to foreign countries (particularly to the continent of Europe) must be sent in narrow bands, open at the sides or ends; other-wise they are chargeable with letter postage.

To prevent mistakes at the exchange offices, it is desirable that the particular routes by which letters are to be forwarded from the United States to Europe should be distinctly written on the covers. Letters intended for transmission in the open mail to England should bear the direction "open mail via England;" if for transmission in the French mail, they should be directed, "via France in French mail;" if for transmission by closed mail to Prussia, they should be directed "via Prussian closed mail;" if for transmission in the closed mail to Belgium, they should be directed "via Belgian closed mail;" and if for transmission by the New York and Bremen line to Bremen, or by the New York and Hamburg line to Hamburg, they should be directed, "via Bremen," or "via Hamburg."

It is important that letters addressed to Germany and other European countries, via France, where the single rate per quarter ounce is 21 cent, should be plainly marked to be sent via France; otherwise they may be sent at the 21 cent open mail to Liverpool by United States packet, the 21 cent rate per half ounce being also chargeable on letters thus forwarded.

Name of the Line.	Government belonging to.	Date of Departure from New York.	Date of Departure from Boston.	Destination.
Aspinwall.	U. S.	1		South Pacific, &c.
Cunard.	Gt. Brit.	1	2	Liverpool.
Hamburg.	U. S.	5		Southampton & Hamb.
Dales.	U. S.	5		Ireland via Queenstown.
*Havana.	U. S.	5		Havana and Key West.
Matanzas.	U. S.	8		Havana.
Cunard.	Gt. Brit.	9		Liverpool.
Aspinwall.	U. S.	11		South Pacific, &c.
Havre.	U. S.	12		Southampton & Havre.
Cunard.	Gt. Brit.	14		Havre and Nassau.
Cunard.	Gt. Brit.	15	16	Liverpool.
Hamburg.	U. S.	19		Southampton & Hamb.
Dales.	U. S.	19		Ireland via Queenstown.
Aspinwall.	U. S.	21		South Pacific, &c.
Cunard.	Gt. Brit.	23		Liverpool.
Bremen.	U. S.	26		Southampton & Bremen.
Dales.	U. S.	26		Ireland via Queenstown.
Cunard.	Gt. Brit.	29	30	Liverpool.

A closed Mail, consisting of Letters and Newspapers for States and Cities of the German-Austrian Postal Union and Denmark, Norway, Sweden, Poland, Rumania, Greece, Ionian Islands, &c., is sent from this office semi-weekly.

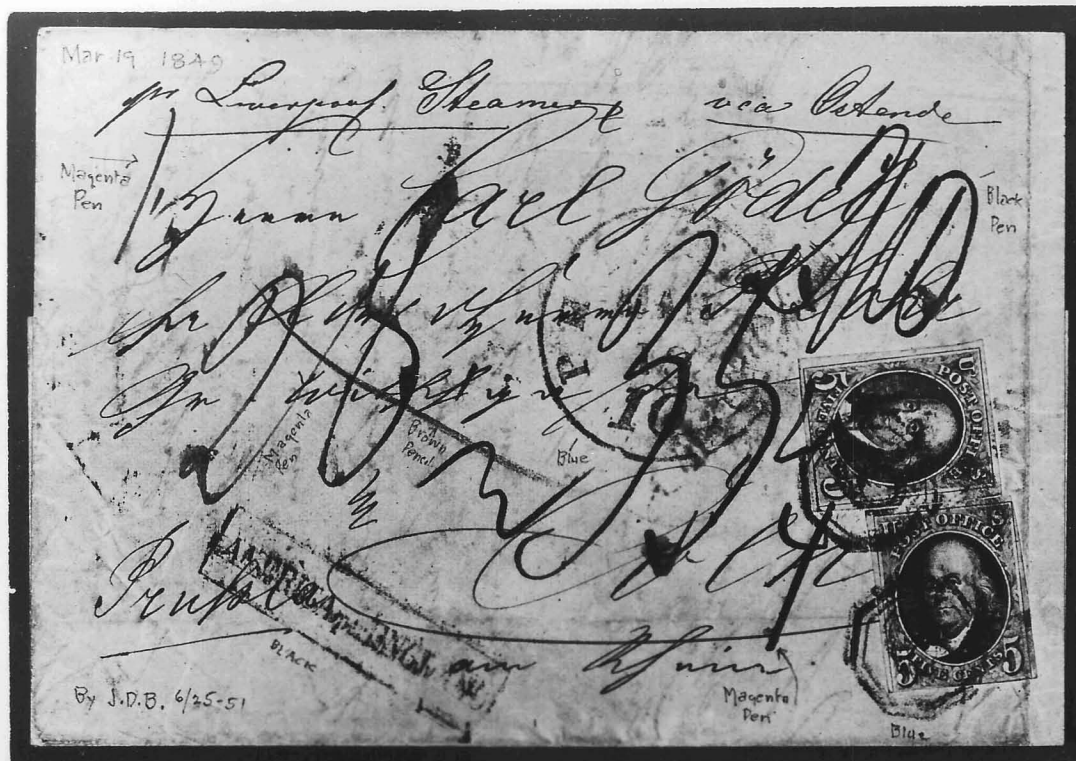
\* West India Islands will be sent by this steamer.

**For Rates on Printed Matter for Foreign Countries, see Third Page.**

44

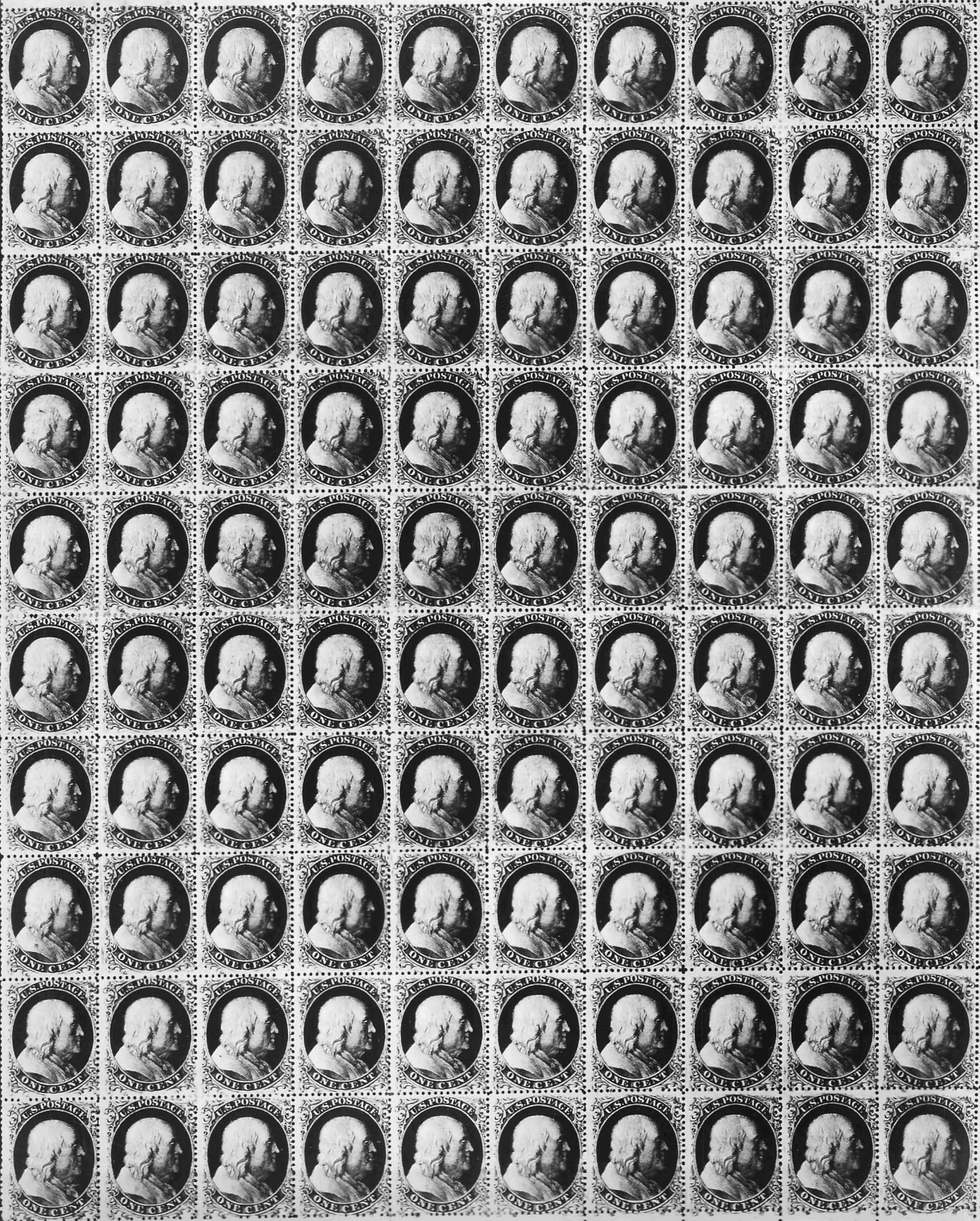
---

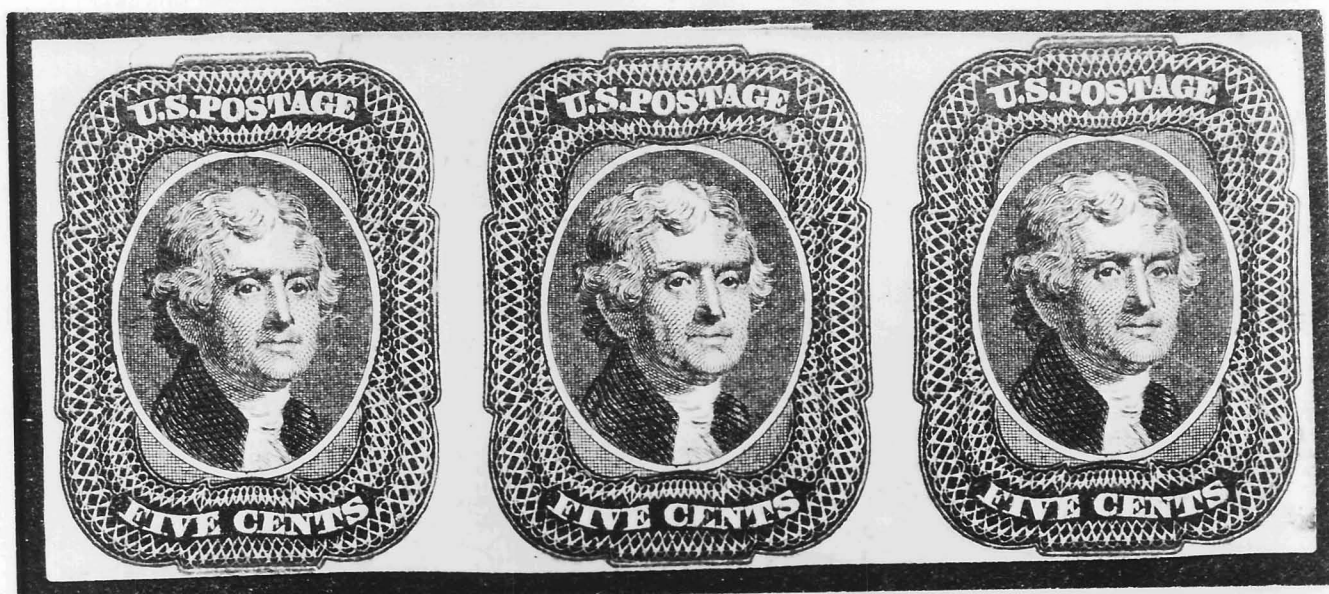


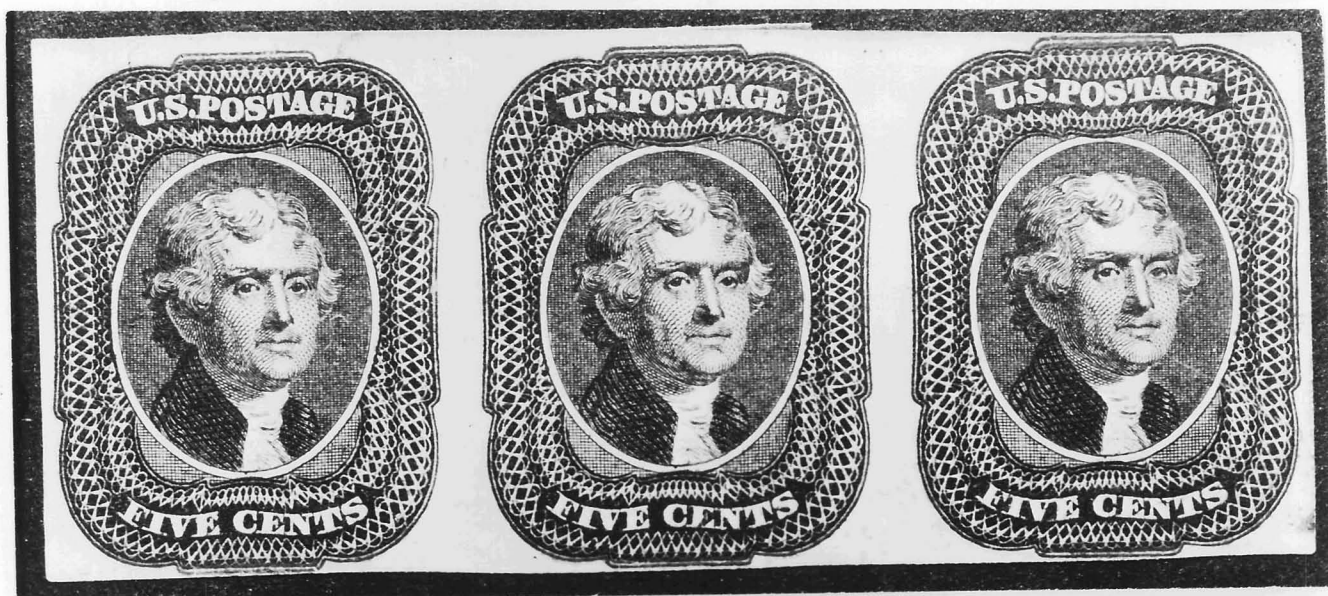


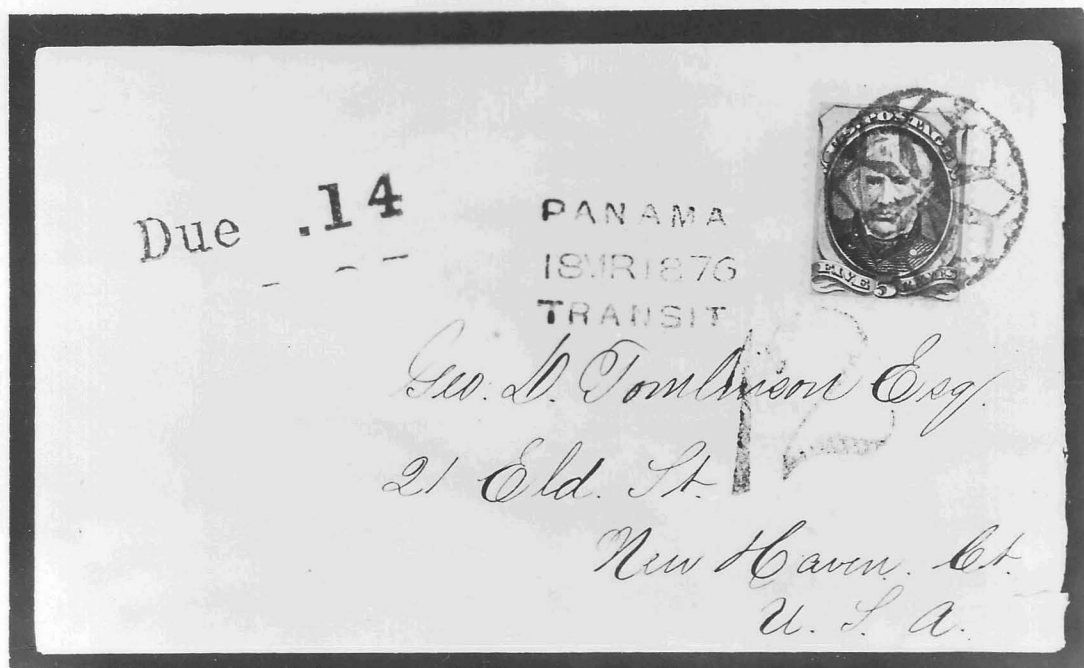
53



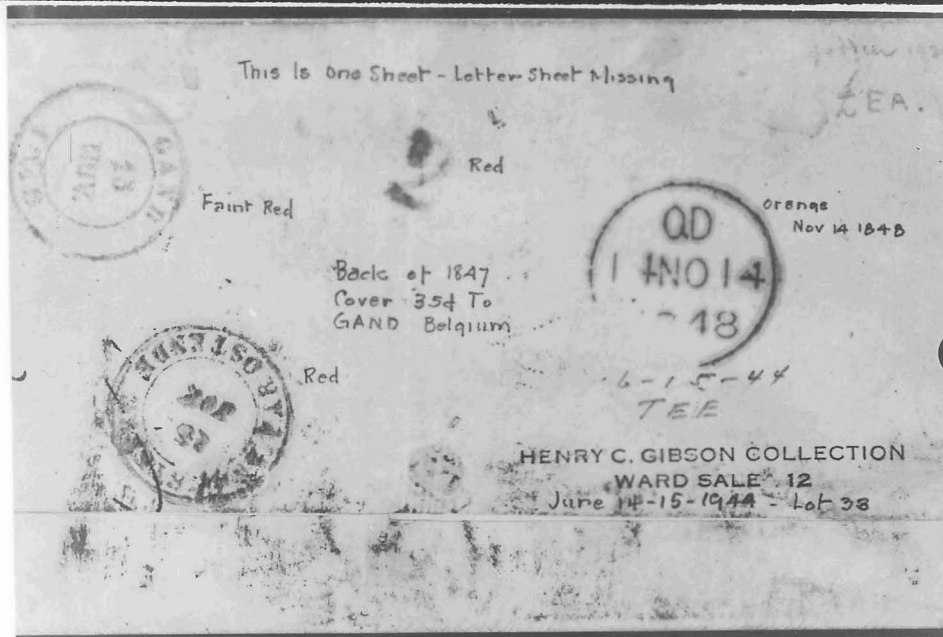


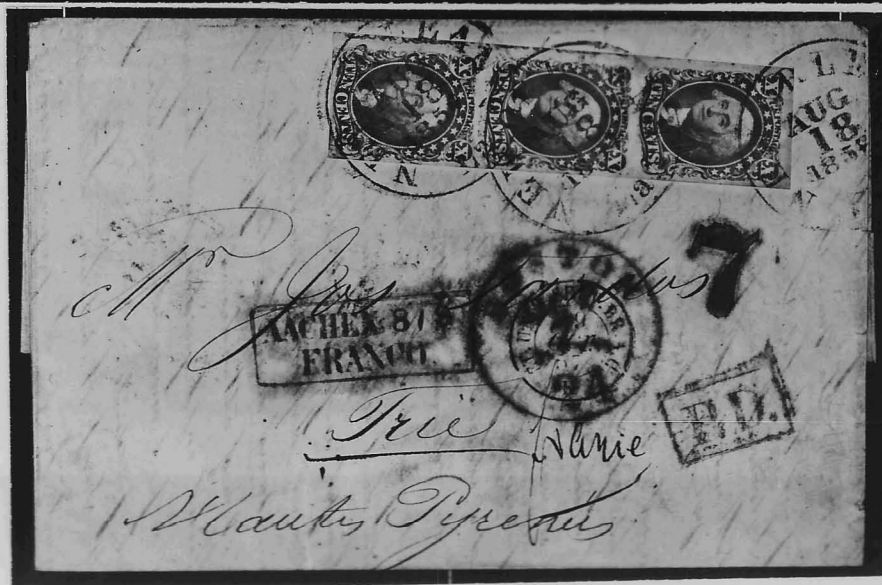












HANOVER 2-3081-2-8

LAW OFFICES  
BENJAMIN SILVERMAN

37 WALL STREET  
NEW YORK 5, N. Y.

ALFRED SILVERMAN - 1940

11/1/56

October 31, 1952

IN REPLY PLEASE REFER TO:

No. 6733

Mr. Harry Weiss  
Editor, Philatelic Gossip  
Holton, Kansas

Dear Sir:

This letter is addressed to you at the request of Mr. Frank A. Hollowbush of Allenhurst, N. J., who received an advance copy of an article written by Mr. Stanley B. Ashbrook of Fort Thomas, Kentucky, and sent to him by Mr. Ashbrook with a statement of the latter's intention to publish the same in a philatelic magazine.

The article concerns itself with the authenticity of a certain cover bearing United States stamps as follows: one copy of the 5¢ Brick Red stamp, 1857 issue; three copies of the 10¢ Green stamp, 1857 issue; all postmarked at New Orleans on April 6, 1858, which date is the earliest one known to stamp collectors for the usage of the 5¢ Brick Red stamp. On the basis of his own opinion Mr. Ashbrook expressed his intention to condemn the cover as fraudulent and so to brand it publicly. Mr. Hollowbush has stated his objections to Mr. Ashbrook.

Mr. Hollowbush is an amateur collector. He purchased the cover from a reputable London dealer and other competent philatelic authorities, after searching scrutiny, have confirmed that it is in all respects genuine. This makes the cover valuable philatelic property and the said article by Mr. Ashbrook, if published under his or another name in the original or amended form, will operate to the great detriment and monetary damage of Mr. Hollowbush.

Therefore, this letter gives you express notice of the consequences of such publication and expresses the hope that your good judgment will restrain you from patent rashness.

Very truly yours,

  
BENJAMIN SILVERMAN

BS:AE

