

# UNITED STATES POSTAL HISTORY

**GEO. D. SUTTON'S CLIPPER LINE for SAN FRANCISCO.**  
**THE WORLD-RENOUNDED A 1 EXTREME CLIPPER**



**"ERICSSON"**

**MATTHEWS, Master, at PIER 27, E. R., is completing her Cargo, and will be dispatched Suddenly.**

The performances of this WONDERFUL SHIP have been so UNIFORM and RAPID as to attract WORLD WIDE attention.  
Her consecutive passages to Liverpool in 17 days, thence to San Francisco in 109 days, and back to Liverpool in 101 days, have NEVER BEEN EQUALLED. The time employed in these RAPID PASSAGES was 8 months; the distance sailed equal to crossing the Atlantic 12 times.

We invite California Shippers to visit the ERICSSON, examine her BEAUTIFUL MODEL, and observe that her room is so equalized as to avoid any possibility of damaging Cargo. P. S.—For Freight, at reasonable rates, apply to

*Consignees in San Francisco, Messrs. MOORE & CO.* **GEORGE D. SUTTON, 70 Wall St.**

PUBLIC AUCTION • MAY 16, 1992

RICHARD C. FRAJOLA, INC.



# UNITED STATES POSTAL HISTORY

**PUBLIC AUCTION  
SATURDAY, MAY 16, 1992  
1:30 P.M.**

*SALE TO BE HELD AT THE  
ASPEN ROOM, HOLIDAY INN DENVER I-70 EAST  
IN CONJUNCTION WITH ROMPEX*

## **EXHIBITION OF LOTS**

Thursday, May 14, 10:00 A.M. — 5:00 P.M.  
at our offices

Friday, May 15, 9:00 A.M. — 6:00 P.M.  
at Rompex, booths 79 - 82

Saturday, May 16 at Rompex, booths 79 - 82, 9:00 A.M. - 12:30 P.M.

**RICHARD C. FRAJOLA, INC.**

P.O. Box 608  
125 W. Park Avenue  
Empire, CO 80438  
TEL (303) 569-3241  
FAX (303) 569-3244



# ROMPEX '92

May 15, 16, 17, 1992

**Holiday Inn** - *John Q. Hammons Trade Center*  
I-70 & Chambers Road  
Aurora, Colorado

*Friday: 9:00 AM - 6:00 PM - Saturday: 9:00 AM - 6:00 PM - Sunday: 9:00 AM - 4:00 PM*

*Admission: Daily Rate - \$1.50 - 3-Day Rate - \$3.50*

**Hosting**  
**The Machine Cancel Society - Annual Convention**  
**and the**

Colorado Postal History Society - Annual Meeting  
Topical Philatelists In Colorado (TOPIC) - General Meeting  
Rocky Mountain Aerophilatelic Society - General Meeting  
Mobile Post Office Society - Regional Meeting  
45+ Dealer Bourse  
3000 Pages of Competitive Exhibits  
United States Postal Service Sales Booth  
Special Show Cachet and Cancel  
Auction

**PLAN TO ATTEND - MARK YOUR CALENDAR NOW**

Information From: ROMPEX, P.O. Box 2352, Denver, CO 80201-2352

(SEE MAP ON PAGE 84)



\_\_\_\_\_

**U.S. DOLLARS.**

**THE AMOUNT OF YOUR BID DOES NOT INCLUDE THE 10% PREMIUM TO BE ADDED TO THE HAMMER PRICE.**

[illegible]

## PRIVATE TREATY REGISTER

In addition to our U.S. Postal History auction, we maintain a stock of pre-1900 U.S. covers and folded letters. After learning of your specific areas of interest we will forward xeroxs of available items for your preliminary consideration. In the event that we cannot be of assistance immediately, we will check stock monthly, and will communicate with you as items become available.

If we can be of assistance directly, please fill out the form below.

Date \_\_\_\_\_

Area(s) of special interest in pre-1900 U.S. postal history and any special requirements as to condition or price range.

---

---

---

---

---

Name \_\_\_\_\_ Telephone \_\_\_\_\_  
(please print or type)

Address \_\_\_\_\_  
(Street) \_\_\_\_\_ (Apt.) \_\_\_\_\_

(City) (State) (Zip)

Signed \_\_\_\_\_

Philatelic reference \_\_\_\_\_

## CONDITIONS OF SALE

1. Lots are sold to the highest bidder at a slight advance over the second high bid. All bids will be held confidential. "Buy" bids cannot be accepted. In case of tie, the first bid received prevails.
2. All bids are per lots as numbered in the catalogue unless otherwise announced by the auctioneer at the time of sale.
3. Any lot, the description of which is incorrect, is returnable, but only within five days of receipt. All disputed lots must be returned intact as received and lots containing five or more items are not returnable at any time. No lots may be returned by purchasers who have had the opportunity to examine them prior to the sale. We do not regard covers as defective that have slightly torn or partially missing backflap. This factor is not justification for return of a lot or lots.
4. Successful bidders, unless they are known to us or supply acceptable references in time to be properly checked are expected to make payment in full before the lots are delivered. The fact that an item is placed on extension (submitted to an expertising committee for certification) does not relieve the successful bidder from this condition of sale.
5. If the purchase price has not been paid within the time limit, nor lots taken up within seven days from date of sale they must be resold and any loss arising from such sale will be charged to the defaulter. Any account more than thirty days in arrears is subject to a late payment charge of 1½% per month so long as the account remains in arrears. If the auctioneer, in his discretion, should institute any legal action to secure payment of a delinquent account, the defaulting purchaser shall pay all legal expense incurred by the auctioneer and such charges will be added to the amount owed.
6. All lots are sold as genuine but should any lot be proved otherwise by written opinion of any competent, responsible authority acceptable to us, immediate refund of the full purchase price will be made, provided that such claim is made in writing within 14 days from date of sale. If claim is not made within this period, no lots are returnable for any reason at any time. So long as we are notified within the 14 day period that an opinion is being sought the matter will remain open until such opinion is rendered. We will not be responsible for any charges incurred by the buyer for expertization fees and costs unless the opinion states the item is not genuine, in which case we will pay actual costs up to a maximum of \$50.00. In the event an item is proved "not as described" it is returnable for full refund, and the buyer will be paid interest (at the prevailing Treasury Bill Rate) for the time his funds have been on deposit with us during the extension period.
7. The right is reserved to group two or more lots, also withdraw any lot or lots from the sale, or to act on behalf of the seller.
8. Until paid for in full all lots remain the property of Richard C. Frajola, Inc. on behalf of the seller.
9. A premium equal to 10% of the successful bid price will be added thereto and is payable by the buyer as part of the total purchase price. The mode of shipment shall be at our option. All forwarding charges will be added to the purchase price.
10. Upon written application lots may be sent for examination prior to the auction, condition upon being mailed back by registered mail, adequately insured, within 24 hours of receipt. The applicant is completely responsible for all lots sent for examination, and for the insurance of same against mishap, from the time of receipt until they are actually received back, and is to pay all expenses of postage and insurance. No lots can be sent for inspection within ten days of the date of sale. Photocopies of lots are available at 25¢ per copy, maximum 10 copies, and stamped self addressed return envelope required.
11. Agents are responsible for all purchases made in behalf of their clients unless other arrangements are made prior to the sale.
12. Telephone bids are entered when received but must be followed up by written confirmation of the bidder.
13. Unless otherwise noted Catalog numbers refer to current Scott U.S. Specialized Catalog, and other references work as indicated.
14. The placing of a bid shall constitute acceptance of the foregoing conditions of sale.

Richard C. Frajola, Inc.

# KEY TO CATALOG

## Abbreviations

ad	advertising	ds	date stamp
ADS	autograph document signed	hs	handstamp
ALS	autograph letter signed	LS	letter signed
ANS	autograph note signed	ms	manuscript
bkst	backstamp	nd	not dated
cc	corner card	np	place of origin not given
cds	circular date stamp	ny	year not given
DS	document signed	pmk	postmark
post card	private mailing card	postal card	U.S. Govt. issued card

## Condition

Condition grades mentioned in the description refer to overall appearance of the item. On covers bearing adhesives, expect normal average centering or margins for the particular issue, only when adhesive condition is above the normal will it be specifically described. File folds on folded letters that do not detract from appearance are not mentioned, nor are missing back flap on covers if no postal markings are affected.

extremely fine—the best possible condition  
very fine—pleasing appearance with all markings well struck  
fine—averages appearance for period, markings readable  
about fine—somewhat below average, markings partially readable

## Estimates

Following each lot is an estimate of what, in the auctioneers opinion, the lot should realize. This is provided as a guide to bidders. Lots may actually realize more or less than our estimates, which are under no circumstances to be considered reserved but merely a guide to bidding. Cat. when noted refers to 1992 Scott Specialized catalog value.

## Telephone Bids

Late bids may be placed by phone, on the day of the sale, by calling the Holiday Inn at (303) 371-9494. Please ask for Richard C. Frajola, Inc. extension. I do not recommend this as there may be difficulties in securing phone service.

## FAX Bids

We now have a FAX machine that can be used to transmit bids through and including Friday, May 15, 1992. The FAX number is (303) 569-3244.

## CONTENTS OF SALE

United States Stamps .....	1
United States Postal History .....	9
Postmarks By State .....	9
Independent Mails .....	33
San Francisco Letter Bag Operators .....	45
Contract Mail Routes To California .....	49
Route Agent Markings .....	53
Express Mail .....	53
Adhesives On Cover .....	55
Collections And Balances .....	75
Great Britain Stamps .....	77
Great Britain Postal History .....	79
Cross Reference Index .....	83

## RED MEN HALL

Richard C. Frajola, Inc. has moved to Red Men Hall, Empire, Colorado. Empire is located at 8,600 feet in the Colorado Rockies, 40 miles west of Denver just 1½ miles north of Interstate 70 on Highway 40 (Berthoud Pass Road) on the direct route to many famous ski resorts and the Rocky Mountain National Park.

Empire was founded in 1860 shortly after the discovery of gold in the area. The area surrounding Empire has many abandoned gold and silver mines and is laced with excellent trails for hiking and biking.

Red Men Hall was built shortly before the turn of the century by the Improved Order Of Red Men, Machinac Tribe #29. The order of Red Men was a non-convivial, charitable organization founded in Baltimore in 1833. Its purpose was to preserve the traditions, culture and customs of the American Indian by incorporating them into the rites of the organization. The Machinac Tribe gave up its charter in 1961.

Louise Harrison, grand-daughter of Adolph Coors founder of the famous brewery, and her sister acquired the property, restored it and turned it into a museum. In 1976 the building was purchased by Vernon and Winifred Hines who operated it as a museum and Indian Art Gallery until purchased by Richard and Francine Frajola last year.

Part of the building is occupied by Richard C. Frajola, Inc. while the remainder is an Indian Art Gallery, under the direction of Francine Frajola. Red Men Hall Gallery features the best of Native American arts and crafts as well as Southwestern art by leading artists including paintings, prints, jewelry, sculpture, Kachinas, pottery, and Hopi baskets.

We would like to extend our personal invitation for you to visit us on your next trip to Colorado.



## PUBLIC AUCTION SALE

SATURDAY, MAY 16, 1992, 1:30 P.M.

AT THE DENVER HOLIDAY INN, ASPEN ROOM

### UNITED STATES STAMPS

- 1 **U.S. Stamp collection**, duplicated mounted collection of used and unused to 1900, used incl. 30c 1857 (2), 1869's to 90c with 30c (2), bank note issues after the grills relatively cplt., 1890 issue cplt., Trans-Miss to, 1, etc., unused, mostly o.g., incl. 12c 1861, #218, #260, #261A, #277, etc., some faults, mostly fine to very fine appearance .....Est. 2,000-2,500
- 2 **Proofs and Essays**, small accumulation of 69 items, incl. #40P3 block of 4, #40P2, various 1857-1861 P3's or P4's, 2c to \$5 Columbian P4's, misc. Bank Note P4's, etc., essays incl. a Shernikow and 4 decalcomanias, mixed condition, faults .....Est. 1,250-1,500
- 3 **#1/Q12, U.S. Stamps**, mounted collection in 1 album, few hundred stamps, used and unused, used incl. 5c 1847, 1869 issue cplt. various Bank Notes to 90c, Columbian \$1 and \$2, Trans-Miss cplt. etc., unused, mostly o.g., incl. 90c Orange (#229), Columbians to 50c, \$1 Trans-Miss, Parcel Post cplt. Ducks 1935-1952 cplt. etc., coll. also incl. 1857 issue card proofs, some revenues and group of Canal Zone, some faults, fine collection .....Est. 2,000-3,000
- 4 **#9X1, 5c New York Provisional**, group of 8 stamps, one on folded letter, includes no initials variety, several have full margins, some faults (cat \$2,925. +) .....Est. 400-500
- 5 **#9X1b, 5c Black** with "A.C.M." initials, full margins, blue ms cancel, faults, very fine (cat \$500.) . . . Est. 150-200

### 1847 ISSUE

- 6 **#1/4, 1847 Issue**, group of 8 stamps, incl. 5 copies of #1, all complete to full margins except one with pre-print paper fold, minor faults, a #2 with large margins tied to piece, creased, and faulty copies of #3 and #4, mostly fine appearance (cat \$4,550.) .....Est. 500-750
- 7 **#1, 5c Brown**, large margins, neat thimble "Paid" cancel of Boston known only after July, 1851, a **post demonetization** usage, thin spot, very fine appearance .....Est. 300-400
- 8 **#1, 5c Red Brown**, large margins, light red cancel, small repaired marginal tear, very fine appearance (cat \$425.) .....Est. 100-150

### 1851-1857 ISSUES

- 9 **#5A/24, 1c 1851-1857 Issue**, the important balance of collection, 2,200 stamps incl. 1851 issue (1,750) and 1857 issue (450), incl. numerous covers, some unused, this largely plated collection and accumulation has many better types with several type IIIA's noted, incl. crack re-construction, strip of 6 on cover, etc., many of the perforated 1c are better types, although largely a plating collection it includes numerous 4 margin copies, corner copies or position pieces, very close examination is recommended (cat \$170,000. + +) .....Est. 20,000-30,000

10	<b>#5A, 1c Blue</b> , type Ib, pos 4R1 <sup>e</sup> , nearly complete margins, black cancel, signed Ashbrook, about fine (cat \$2,500.) .....Est.	250-300
11	<b>#6, 1c Blue</b> , type Ia, 3 margin copy clearly showing type characteristics at foot, black cancel, small faults (cat \$6,500.) .....Est.	500-750
12	<b>#7, 1c Blue</b> , type II, unused horiz. strip, pos 71-73R3, left pair cut in at top, minor faults, signed by Ashbrook as uncanceled (cat \$1,600. as more common plate) .....Est.	200-250
13	<b>#7, 1c Blue</b> , cut in, minor faults, printed “Paid” <b>precancel</b> , fine .....Est.	150-200
14	<b>#7, 1c Blue</b> , type II, pos 51L, large margins incl. part of imprint at left, extremely fine .....Est.	100-150
15	<b>#7, 1c Blue</b> , type II, bottom right corner margin copy with part strike, blue “Philadelphia Pa” pmk, marginal corner crease .....Est.	100-150
16	<b>#7, 1c Blue</b> , type II, horiz. pair, pos 83-84L1 <sup>e</sup> , right stamp showing double transfer, full to large margins, brownish grid cancels, small adherence on reverse of right stamp, ex Newbury, very fine .....Est.	100-150
17	<b>#7, 1c Blue</b> , horiz. strip of three, pos 45-47L1 <sup>e</sup> , cut in, with magenta thimble “Paid” cancels of Boston, this strip mentioned in Ashbrook, page 129, signed “very-very-rare S.B.A.” on back .....Est.	250-300
18	<b>#7, 1c Blue</b> , type II, horiz. strip, pos 41-43R1 <sup>e</sup> , mostly large margins, “Dalton Ga” cancels, left stamp small thin spot, ex Caspary .....Est.	100-150
19	<b>#8, 1c Blue</b> , type III, pos 53L4, complete to large margins, neat ms cancel, signed Ashbrook, fine (cat \$700.) .....Est.	200-250
20	<b>#8A, 1c Blue</b> , type IIIA, horiz. pair, pos 37-38R1 <sup>e</sup> , large margins except touched at left, “New York” pmk, fine-very fine (cat \$1,250.) .....Est.	300-400
21	<b>#9, 1c Blue</b> , type IV, slightly cut in, neat <b>Canadian</b> target cancel .....Est.	100-150
22	<b>#10/26, 3c Dull Red</b> , the important balance of collection, several thousand stamps and about 150 covers, primarily a plating study of both perforated and imperf issues, incl. o.g. block of 4 of #11, several strips of #10 and #11, loaded with better cancels, etc., covers incl. combinations with local posts, R.R., packet marks and some better usages, condition varies, please examine .....Est.	4,000-5,000
23	<b>#11, 3c Dull Red</b> , irregular block of five, unused, o.g., close to mostly full margins, some gum glazing, fine (cat \$805.) .....Est.	250-300
24	<b>#12, 5c Red Brown</b> , 2 pairs and a single, 3 stamps with full margins, minor faults .....Est.	500-750
25	<b>#12TCP5, 5c Deep Red Brown</b> trial color proof on wove paper, full margins, very fine (cat \$1,500.) ...Est.	500-750
26	<b>#12, 5c Red Brown</b> , two copies, originally a pair used together, with nearly complete strike “New York Sep 20” Ocean Mail pmk, right stamp full margins, left stamp slightly cut in, rich color, ex Eno, very fine .....Est.	1,500-2,000

27	<b>#12, 5c Red Brown</b> , full to large margins, relief D, very fine . . . . . Est.	500-750
28	<b>#12, 5c Brown</b> , full even margins, tied to small piece by "New Orleans La Aug 10" pmk, very fine . . . . Est.	400-500
29	<b>#12, 5c Red Brown</b> , complete to full margins, curl on top of head variety, light cancel, fine . . . . . Est.	400-500
30	<b>#12, 5c Red Brown</b> , full to large margins, relief D, very fine . . . . . Est.	400-500
31	<b>#12, 5c Red Brown</b> , full margins, relief C, very fine . . . . . Est.	400-500
32	<b>#12, 5c Red Brown</b> , full margins, relief D, very fine . . . . . Est.	400-500
33	<b>#12, 5c Red Brown</b> , complete to full margins, relief B, fine . . . . . Est.	400-500
34	<b>#12, 5c Red Brown</b> , full to large margins, very fine . . . . . Est.	400-500
35	<b>#12, 5c Red Brown</b> , complete to full margins, shows interior position dots, fine . . . . . Est.	400-500
36	<b>#12, 5c Red Brown</b> , three margins, <b>defective transfer</b> variety, pos 23R1, minor faults . . . . . Est.	150-200
37	<b>#13/33, 10c Green</b> , balance of collection, 350 stamps, incl. 135 imperforate and 215 perforated, several on cover, excellent range of types except no type IV's noted, imperfs incl. a few pairs and strips incl. mixed type II-III-I strip used on front only to Chile, several type I's noted, perforated incl. numerous types I to III, covers incl. pair used with 2 copies 1c Blue to Peru, condition varies, faults, please examine (cat \$40,000. + +) . . . . . Est.	4,000-5,000
38	<b>#13, 10c Green</b> , type I, pos 91R1, large margins incl. center line at left, neat cds, tiny thins (cat \$575.) . . . . . Est.	200-250
39	<b>#13, 10c Green</b> , type I, pos 100L1, corner sheet margin copy with neat ms cancel, very fine (cat \$250.) . . . . . Est.	200-250
40	<b>#14, 10c Green</b> , type II, full to large margins, black cancel, very fine . . . . . Est.	100-150
41	<b>#15, 10c Green</b> , type III, pos 30L1, large margins incl. center line at right, light red cancel, extremely fine . . . . . Est.	200-250
42	<b>#17, 12c Black</b> , unused horiz. pair, left stamp cut in at top left, right stamp with full margins incl. traces of imprint at right, right stamp tear at top, (cat \$5,100.) . . . . . Est.	300-400
43	<b>#17, 12c Black</b> , the collection of 42 used stamps, incl. 9 pairs, several position pieces with side or bottom sheet margins, part imprints, etc., mostly with complete or nearly complete margins, mostly minor faults, fine appearance (cat \$10,500.) . . . . . Est.	1,500-2,000
44	<b>#17, 12c Black</b> , horizontal strip of ten, pos 41-50L1, complete horiz. row showing part imprint at left, pos 41 with corner missing, pos 50 partially torn away at right, otherwise mostly full margins, faults including repaired tears and creases, an exceptional multiple (cat \$2,500.) . . . . . Est.	750-1,000



4X



4X



5



14



15



39



28



6X



6X



7



8



10



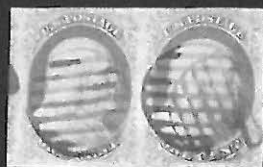
11



12



13



16



17



19



23



18



20



21



25



26



27



29



30



31



32



33



34



35



36



38



40



41



42



44

45	<b>#19, 1c Blue</b> , type Ia, pos 91R4, faults (cat \$2,500.) . . . . . Est.	200-250
46	<b>#20, 1c Blue</b> , type II, pos 10R4 showing double transfer, black cancel, faults (cat \$900.) . . . . . Est.	100-150
47	<b>#20, 1c Blue</b> , type II, horiz. strip of six, pos 2-7L4 with ms cancels, perfs partially cut away into design, minor faults, ex Ashbrook, (cat. as pairs with hs cancels \$3,750.) . . . . . Est.	200-250
48	<b>#27, 5c Brick Red</b> the <b>defective transfer</b> variety, pos 23R1, scissors trimmed perfs at top, a couple irregular perfs, fine . . . . . Est.	200-250
49	<b>#29, 5c Brown</b> , vertical pair, bottom stamp perfs clear all around, "New Orleans La" pmks, very fine . . . . . Est.	200-250
50	<b>#29, 5c Brown</b> , vertical strip of three, center stamp showing <b>defective transfer</b> , pos 23R1, P.F. cert, fine . . . . . Est.	250-300
51	<b>#30A, 5c Brown</b> , type II, nine copies, 1 unused, used incl. 2 showing part imprint at right and 1 with guide line, faults, mostly minor (cat \$1,750.) . . . . . Est.	250-300
52	<b>#35, 10c Green</b> , re-joined horiz. pair with <b>red</b> New York Ocean Mail cancels, ex Eno, fine . . . . . Est.	150-200
53	<b>#36, 12c Black</b> , plate 1, o.g., right margin, irregular block of five showing "Toppan Carpenter & Co. Philadelphia" imprint, top right stamp thin spot, some minor gum loss, very fine multiple, ex Neinken . . . . . Est.	1,250-1,500
54	<b>#36, 12c Black</b> , plate 1, o.g., block of four, diagonal crease and gum soaks, scarce block (cat \$2,000.) . . . . . Est.	500-750
55	<b>#36b, 12c Black</b> , plate 3, unused block of four, fine (cat \$1,500.) . . . . . Est.	400-500
56	<b>#36b var, 12c Black</b> , plate 3, imperforate single without gum, complete to large margins, thin spot, very fine appearance . . . . . Est.	750-1,000
57	<b>#38, 30c Orange</b> centered into perfs at foot, part strike "New York" Ocean Mail pmk, ex Eno, fine . . . . . Est.	150-200
58	<b>#40P4/209P4, Card Proofs</b> , mtd. collection of 33 card proofs, incl. 1857's cplt., 1861's cplt. less extra 3c and extra 24c, 1869's cplt. and #205P4-209P4, mostly full margins, fine-very fine (cat \$1,620.) . . . . . Est.	300-400

### 1893 - 1933 ISSUES

59	<b>#230/C18, U.S. Stamps</b> mounted collection of mostly unused, o.g. singles and blocks, some used, singles incl. Columbians to 10c, Trans-Miss to 50c, Pan-Ams, blocks incl. Louisiana Purchase cplt., Jamestown, Kans-Nebr and 50c Zeppelin, also incl. White Plains SS, condition varies, fine group . . . . . Est.	500-750
60	<b>#279Be/807b, Booklet Panes</b> , most o.g., mtd. collection of 24 panes, incl. #279Be, 300b, 301c, 463a (2), etc., some separations or faults . . . . . Est.	300-400



61	<b>#324/719, Mint Sheets</b> , accumulation of 41 mint sheets, mostly 2c Reds, incl. 2c Louisiana, 1c Lexington, 2c-5c Aeronautics, Olympics, etc., some faults and separations, mostly fine .....Est.	750-1,000
62	<b>#397-400, 1c to 10c Yellow Pan Pacific</b> , blocks of 4, o.g., some n.h., fine-very fine (cat \$704.) .....Est.	150-200
63	<b>#400A, 10c Orange Pan Pacific</b> , block of four, o.g., n.h., very fine (cat \$710.) .....Est.	400-500
64	<b>#401-404, 1c to 10c Pan Pacific</b> , perf 10, o.g., blks of four, heavy hinge remnants, 10c top pair thin spot, irregular perfs (cat \$4,029.) .....Est.	400-500
65	<b>#467/505, 5c Rose Errors</b> , o.g., three blocks, block of nine with single error, error n.h., glazed o.g., two blocks of twelve with double error, error stamps n.h., fine-very fine (cat \$2,450.) .....Est.	500-750
66	<b>#523/573, Dollar Values</b> , o.g., accumulation of 23 stamps, incl. #523 (1), #524 (block of 4 and single), #547 (2), #571 (6), #572 (6) and #573 (3), some n.h. incl. #524 block, some minor faults, fine-very fine (cat \$3,750.) .....Est.	750-1,000
67	<b>#537/1166, Plate Blocks</b> , mtd. collection with some duplication incl. Victory (3), 5c Pilgrims Harding Rotary, 5c Huguenot, Lexington - Concord cplt., 2c Reds virtually cplt., Parks cplt., etc., mostly fine-very fine .....Est.	400-500
68	<b>#630, White Plains Sheet</b> , accumulation of 11 sheets, 4 are n.h., 3 hinged, 4 with faults or separations, fine-very fine centering (cat \$3,575.) .....Est.	750-1,000
69	<b>#803-831, ½c to 50c Presidentials</b> , o.g., n.h., complete sheets of 100, fine-very fine .....Est.	750-1,000
70	<b>#832-834, \$1 to \$5 Presidentials</b> , o.g., accumulation incl. \$5 (20, incl. 2 plate blocks), \$2 (44, incl. 5 plates), and \$1 (49, incl. 5 plates), some minor faults, some hinged (cat \$3,422.) .....Est.	500-750
71	<b>#864-893, Famous Americans</b> , complete set in mint sheets of 70, fine-very fine .....Est.	750-1,000
72	<b>#C1/C24, Airmails</b> , balance of unused o.g., incl. #C1 (6), C2 (5), C3 (10), C4 (8, incl. blk), C5 (6), C6 (9, incl. blk), C13-15 and extra C15, C18 (22) and 3 plate blocks of #C24, some minor faults incl. on C13-15, many fine-very fine (cat \$7,277.) .....Est.	1,000-1,250
73	<b>#C1-3, 6c - 24c First Airmails</b> , o.g. blocks of four, one 6c stamp thin spot, fine-very fine (cat \$900.) .....Est.	200-250
74	<b>#C2, 16c Green</b> , o.g. block of eight, lower six are n.h., bottom stamp corner gum crease, very fine centering (cat \$700.) .....Est.	200-250
75	<b>#C7/C36, Airmails</b> , the collection of 22 diff. mint sheets, incl. #C7-C11, C17, C19, C20-23, C25-31 and C34-36, fine-very fine .....Est.	750-1,000
76	<b>#C7/C63, Airmail Sheets</b> , accumulation of 110 mint sheets, incl. a #C46 sheet and several #C7 sheets, some faults, please examine .....Est.	400-500



77	#C13-15, 65c - \$2.60 Zeppelins, o.g., n.h., very fine (cat \$1,850.)	Est.	750-1,000
78	#C13-15, 65c - \$2.60 Zeppelins, o.g., 1.h., very fine (cat \$1,850.)	Est.	750-1,000
79	#C13-15, 65c - \$2.60 Zeppelins, o.g., \$1.30 disturbed o.g., very fine (cat \$1,850.)	Est.	750-1,000
80	#C13-15, 65c - \$2.60 Zeppelins, o.g., fine (cat \$1,850.)	Est.	500-750
81	#C13-15, 65c - \$2.60 Zeppelins, o.g., 65c and \$1.30 with h.r., fine (cat \$1,850.)	Est.	500-750
82	#C13-15, 65c - \$2.60 Zeppelins, o.g., faults (cat \$1,850.)	Est.	400-500
83	#C18, 50c Zeppelin, top margin plate block of six, hinged in selvage, selvage crease, minor gum skip, very fine centering (cat \$800.)	Est.	200-250
84	#C20-22, Trans-Pacific Issues, accumulation of 27 mint sheets, incl. #C20 (14), #C21 (9) and #C22 (4), some minor faults	Est.	1,500-2,000



45



46



47



48



49



52



56



57



53



50



54



55



74



62X



63



64X



73X



73X



73X



82X



82X



81X



82X

# UNITED STATES POSTAL HISTORY

## MEXICAN WAR

85	<b>Brazos Fe 23</b> two line pmk and "10" rate hs on entire to Ohio, fine . . . . . Est.	100-150
86	<b>Monterey Mx<sup>co</sup></b> Dec 21 ms endorsement on cover to Ohio, "Brazos Jany 3" pmk and "10" rate hs, 1848 pencil docket, very fine . . . . . Est.	250-300
87	<b>Pt Isabel Jan 9 1847</b> two line pmk and ms "20" rate on cover to Miss., edges faulty . . . . . Est.	100-150
88	<b>Saltillo Mex</b> Nov 30 ms pmk and "10" rate on cover to N.Y., aged, very fine usage . . . . . Est.	200-250

## POSTMARKS BY STATE

### CALIFORNIA

89	<b>California</b> , the important balance of townmarks collection, 130 covers or folded letters, no San Francisco, primarily pre 1860 usages, better pmks incl. 40 rate pmks of Sacramento, Culloma and Marysville, straight line pmk of Columbia (2), better frankings with 10c Green imperf, 1c Blue etc., several nice rate hand-stamps and usages, condition varies, faults, please examine, very fine balance . . . . . Est.	2,000-2,500
90	<b>California 40 Rates</b> , collection of 47 folded letters or covers used to <b>California</b> during the 40c rate period, virtually all different, excellent variety of towns incl. a few southern origins, condition varies, faults . . Est.	750-1,000
91	<b>Angels May 22 Cal</b> bluish three line pmk, somewhat light strike on 1854 folded letter to Stockton, 3c Dull Red (#11) with matching cancel, fine . . . . . Est.	200-250
92	<b>Benicia Cal</b> Feb 13 ms pmk and "Paid 12½" rate on 1850 folded letter to "U.S. Indian and Navy Agent" at San Francisco, file fold, very fine . . . . . Est.	100-150
93	<b>Benicia Cal</b> Jul 3 red cds and "12½" rate hs on 1850 folded letter to Sacramento, slightly edge soiled, file fold, fine . . . . . Est.	150-200
94	<b>Benicia Cal</b> Feb 28 red cds, "Paid" hs and "12½" rate hs on entire to San Jose, ex Jessup, very fine . . . . . Est.	150-200
95	<b>Benicia Cal</b> May 14 red cds and "40" rate hs on 1851 folded letter to Maine, very fine . . . . . Est.	100-150
96	<b>Columbia Cal</b> straight line pmk, ms "Apl 11/53" date and "10" due hs on cover to Mass., very fine . . Est.	150-200
97	<b>Columbia Cal</b> partially clear straight line pmk, ms date and "Paid 29" rate hs on 1853 folded letter to <b>England</b> , red "3" credit and 1853 transit, edge worn, very fine usage . . . . . Est.	100-150
98	<b>Columbia Cal</b> straight line pmk, "June 21/53" date and "Paid 6" rate hs on folded letter to Maine, fine . . . . . Est.	150-200
99	<b>Columbia Cal</b> two line pmk, ms date and "10" rate hs on 1854 folded letter to N.Y., fine . . . . . Est.	100-150

5/10  
Feb 23

85

Wm. Thompson  
Columbus  
Ohio

Monday m.  
Dec. 21st 10

86

Mrs. Lucina Brewster  
Columbus  
Ohio

87

Mr. H. H. H. H.  
H. H. H. H.

88

Mr. George L. L.  
Fairmount  
Mass.

91

Rev. S. S. Phillips  
Stockton  
Cal.

95



Miss M. P. Fuller  
Care of W. P. Phillips Jr.  
Portland

40

1/10  
13 July

Gen. W. L. W.  
W. L. W.  
San

92



93

Rev. S. S. Phillips  
Stockton  
Cal.



94

Rev. S. S. Phillips  
Stockton  
Cal.

COLUMBIA

Benjamin D. D.  
West Randolph  
Mass.

96

COLUMBIA

Jan 1858

98

Mr. Stephen H. H.  
H. H. H. H.  
Gloucestershire  
England

97

COLUMBIA

Jan 12/11

99

L. L. H. H. H.  
H. H. H. H.  
New York

10



100	<b>Columbia Cal</b> two line pmk, ms date and "paid 6" rate hs on cover to Vermont, cover edge wear, fine strikes .....Est.	100-150
101	<b>Culloma Alta Cal</b> , pair of covers with black cds, one with internal "40" rate the other with "80" rate hs, the second with arc "Paid" hs, both worn, wrinkles and minor faults, fine strikes .....Est.	250-300
102	<b>Don Pedros Bay Cal</b> July 22 ms pmk on overpaid cover to Martinez, 5c Red Brown (#28) with matching cancel, light aging .....Est.	100-150
103	<b>Downieville Cal</b> May 19 1859 cds and hollow star cancel tying 3c Red entire to San Francisco, cover minor edge faults.....Est.	75-100
104	<b>Dry Creek Cal</b> Apr 2 orange red, double circle pmk and "Paid 10" hs on cover to Ohio, cover edge tear, very fine strike .....Est.	100-150
105	<b>Fosters Bar Cal</b> blue cds, "Paid" hs and ms date on cover to N.H., 3c Dull Red (#11) pair with ms cancel, cover edge wrinkles .....Est.	75-100
106	<b>Gilroy Cal</b> bluish pmk tying 1c Blue (#24) to cover to Ohio, 3c Dull Red (#26) with ms cancel, fine ....Est.	75-100
107	<b>Grass Valley Cal</b> Nov 29 ms pmk and cancel on two 1c Blue strips (#7, pos 91-93L1 <sup>c</sup> , and #8A-7, pos 81-83L1 <sup>c</sup> ), left strip full margins, right strip cut in, cover edge faults, very fine usage .....Est.	300-400
108	<b>Jamestown Cal</b> May 29th ms pmk and "Paid 6" rate on cover to N.Y., fine .....Est.	75-100
109	<b>Los Angeles Cal</b> blue cds tying 10c Green (#15, three margins) to cover to Miss., small edge tear, fine .....Est.	100-150
110	<b>Martinez Cal</b> faint red cds, "10" rate hs and ms "Nov 30" date on cover to Mass., <b>Steamer Winfield Scott</b> two line red hs, <b>last trip</b> usage as the steamer sunk Dec 2, 1853, cover lightly cleaned, very fine usage .....Est.	750-1,000
111	<b>Marysville Cal</b> Apr 28 blue pmk and "Paid 6" oval tying pair 3c Orange Brown (#10) to 1852 folded letter to Mass., fine .....Est.	75-100
112	<b>Maxwells Creek Cal</b> blue pmk, ms date, on 10c Green entire to N.Y., very fine .....Est.	50-75
113	<b>Merced Falls Cal</b> rimless pmk, ms "Mch 27 1861" date and P.M. free frank on cover to Stockton, reduced slightly at left, fine strike .....Est.	75-100
114	<b>Murphy's Cal</b> Dec 12 red cds and "Paid 6" oval hs on cover to Vermont, edge wear, fine strikes .....Est.	75-100
115	<b>Murphy's Cal</b> July 13 cds on 6c Green entire to Conn., 1c Blue (#9) tied with 3c Dull Red (#11, paper fold), cover edge worn and small edge tear, fine usage .....Est.	100-150
116	<b>Nevada City Cal</b> Feb 18 ms pmk and "40" rate on cover to Iowa, scotch tape repaired tear, fine usage .Est.	100-150



117	<b>North San Juan Cal</b> Jan 2 fancy oval pmk struck twice on 10c Green entire to Ill., water soak at bottom right .....Est.	50-75
118	<b>Oroville Cal</b> two line pmk, ms date and "Paid 10" rate on cover to N.Y., 1856 docket, edges aged, fine strike .....Est.	100-150
119	<b>Patterson Cal</b> May 5 double circle pmk, oval "Paid" hs and ms "3" rate on cover to Yuba City, very fine .....Est.	75-100
120	<b>Pilot Hill Cal</b> Dec 4 double circle pmk on 10c Green entire to Mass., small age stain .....Est.	50-75
121	<b>Pleasant Springs Cal</b> Aug 12 double circle pmk and "Paid 10" hs on cover to Maine, original 1855 letter dated from "Moklume River," cover edge aged, fine strike .....Est.	75-100
122	<b>Princeton Cal</b> May 28 1857 ms pmk on 10c Green entire to Maine, light foxing, fine .....Est.	75-100
123	<b>Quincy Cal</b> Jul 7 ms pmk on cover to San Francisco, 3c Dull Red (#11) with ms cancel, cover edges soiled .....Est.	75-100
124	<b>Rattlesnake Cal</b> Mar 4 double circle pmk tying 10c Green entire to Mass., very fine .....Est.	75-100
125	<b>Sacramento Sep 30</b> Paid 40 ms pmk and rate on cover to N.H., 1849 letter dated from "Sierra Nevia Mountains" from a prospective miner, mentions "Direct to Sacramento City, Upper California, formerly Sutters Fort," cover minor edge aging, fine .....Est.	500-750
126	<b>(San Diego)</b> , entire to Boston docketed "San Diego May 20, 1847, Capt. James Hall" on flap, entered the mails at St. Louis with their red "Steam 10" hs, carried <b>overland</b> from California, file folds and small translucent stain, very fine usage .....Est.	400-500
127	<b>San Francisco</b> , the collection of 32 folded letters or covers with diff. sailing date pmks during the 40c rate period, from Sept 1, 1849 through June 14, 1851, includes several different styles of pmk and rating, paid and unpaid usages, many with good letters, condition varies, an exceptional group .....Est.	500-750
128	<b>San Francisco, Cal</b> , the important balance of stampless collection, 83 covers or letters and 6 misc. pieces, incl. July 11, 1849 letter carried out of the mails to N.H., excellent range of pmks, rates and usages with 15 used to either England or France, 2 inbound covers from Hawaii with diff. "Ship" markings, rate hand-stamps incl. various styles with "1, 2, 5, 6, 10, 12, 12½, 30, 40 and 80," misc. incl. 1847 Writ of Execution and 1849 bill of lading, faults, very fine balance .....Est.	1,500-2,000
129	<b>San Francisco</b> , balance of adhesives on cover used from San Francisco, 32 covers, 1847/1867 issues, 1851's incl. 3c Orange Brown pair and strip of six covers, 1861 issue incl. usages to Canada, France, England and Germany, various markings incl. oval "Too Late" hs, various type cog cancels, etc., faults, fine balance .....Est.	300-400
130	<b>(San Francisco, Cal)</b> , December 11, 1846 folded letter of W.A. Leidesdorff dated "Yerba Buena" to Captain Smith at Bodega (Bay), no postal markings, letter regards purchase of a brig for the lumber trade, fine <b>Mexican Period</b> usage .....Est.	500-750

1866  
May 91  
Cal

118



PAID 3



To Mr. Enterprise Lodge  
No 70. 4th St. N.  
Yuba City  
Luther Co  
Cal

117

Mr. A. C. Ewing  
Galveston  
Tex



120

Mr. J. L. Bely  
Birmingham  
Ala



PAID 10

121

Mr. Thomas A  
Bradford

122

Mr. Cyrus Henderson  
Milton  
Maine



Quincy Mass  
July 1

123

Mr. E. A. Hail  
San Francisco  
Cal



125

Mr. P. B. Hubbard  
East Lyman  
New Hampshire

124

Mr. J. C. Felt  
Baltimore Md  
May

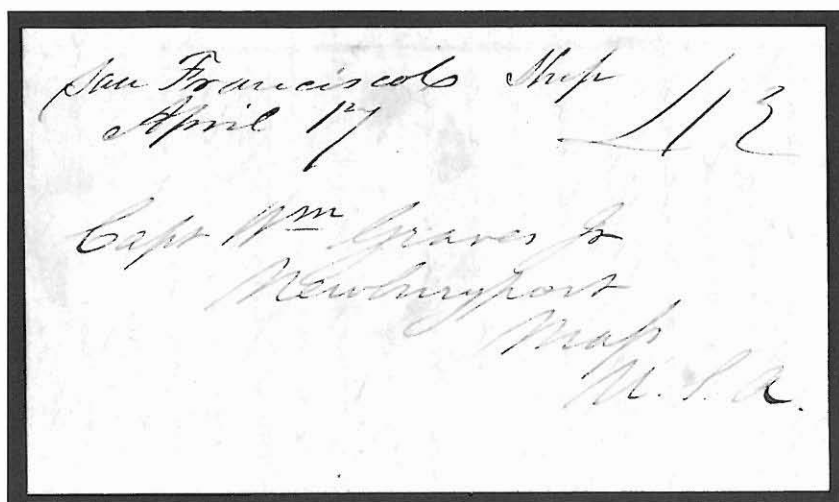


Captain Moses Smith  
Bozys

130

Mr. W. Appleton  
Boston Mass

126



- |     |   |             |
|-----|---|-------------|
| 131 | <b>San Francisco C</b> April 17 ms pmk, "Ship" and "42" rate on 1849 folded letter dated originally "At Sea, March 1849" and appended "March 11, Sunday - we are now running into Honolulu," very fine . . . . Est.   | 2,000-2,500 |
| 132 | <b>San Francisco</b> straight line pmk, red ms "June 20" date and "40" rate on cover to Clinton, N.J., <b>first day</b> of usage of straight line, ms 1849 docket, cover minor edge wear, fine . . . . . Est.   | 1,000-1,250 |
| 133 | <b>San Francisco</b> straight line pmk, red ms "June 20" date and "80" rate on 1849 folded letter to Boston, <b>first day</b> of usage of pmk, letter mentions, in reference to the Yuba River, "The gold is mixed up with black sand like the kind we use on our writing desks," aged file fold, about fine . . . . . Est. | 750-1,000   |
| 134 | <b>San Francisco</b> straight line pmk, red ms "July 2" date and "80" rate on cover to N.J., 1849 usage, fine . . . . . Est.  | 750-1,000   |
| 135 | <b>San Francisco</b> straight line pmk, red ms "July 2" date and "40" rate on 1849 folded letter to N.J., good letter mentions being robbed in the stage across Mexico and that the writer is going to remain at Benicia, repaired fold splitting, aged, fine usage . . . . . Est.  | 750-1,000   |
| 136 | <b>San Francisco</b> straight line pmk, red ms "July 2" date and "40" rate on 1849 folded letter to Iowa, letter dated June 13 <b>from Suters Mill</b> mentions "we arrived here this evening at Suters Mill where the gold was first discovered," edge wear and bottom portion discolored . . . . . Est.                   | 1,000-1,250 |
| 137 | <b>San Francisco</b> straight line pmk, red ms "Aug 1" date and "40" rate on 1849 folded letter to Maine, letter dated April 11, 1849 from "Port Famine in the Straits of Magellan," from Capt. Morill corres., last day of use of straight line pmk, very fine . . . . . Est.  | 1,500-2,000 |
| 138 | <b>San Francisco Cal</b> Aug 1 black cds, <b>first day</b> of use of this pmk was also last day for straight line, see previous lot, red crayon "40" rate on 1849 folded letter to N.J., minor edge wear, fine . . . . . Est.   | 150-200     |
| 139 | <b>San Francisco 80</b> Feb 28 orange cds and "Paid" hs on 1850 entire <b>to England</b> , ms "1/-" due, arrival bkst, slightly aged fold . . . . . Est.  | 100-150     |
| 140 | <b>San Francisco Cal 40</b> Jun 1 red cds with rate and additional cds with black "40" rate hs on 1850 entire <b>to England</b> , ms "59" total rate, ms "2/5½" due, arrival bkst, file fold, fine . . . . . Est.   | 150-200     |



SAN FRANCISCO

June 20  
1850

Archd. Taylor  
Clinton P.  
Vermont  
State of New York

132

SAN FRANCISCO

June 20

Messrs. Whiting & Brother  
Boston  
Mass.

133

SAN FRANCISCO

July 2

134

80

SAN FRANCISCO

July 2

135

80

SAN FRANCISCO

Aug 1

137

40

Saml. E. Hopper & Co.  
Ranapo

New Jersey

SAN FRANCISCO

July 2

136

40

Mrs. W. E. Brown  
Kirkland

1850



138

40

B. C. Miller Esq. Secy  
Mutual Benefit Life Ins.

1850

via New York

50



Messrs. Great South Co.  
London

140



John H. Huth  
London

139

141	<b>San Francisco Cal</b> Jul 1 orange cds, "Paid" hs and ms "56" (21 + 35) rate on 1850 folded letter to <b>France</b> , red "New York" transit bkst, blue "Southampton" transit cds, red French entry cds and ms due, fine .....Est.	250-300
142	<b>San Francisco Cal</b> Jul 25 orange cds and ms "64" rate on 1850 entire to <b>Bremen</b> , red "New York Sep 6" transit bkst, file fold, very fine usage .....Est.	300-400
143	<b>San Francisco 40</b> Sep 1 black cds and red "Paid" hs on cover to Conn., original 1850 letter and printed "Letter Sheet Prices Current, prepared expressly for the Alta California," fine .....Est.	100-150
144	<b>San Francisco 40</b> Sep 17 black cds on 1850 folded letter to St. Louis, excellent letter describing a fire, "Five hours ago I turned out at the cry of 'Fires' and rushing up to the Plaza saw the flames issueing from a small shanty on Pacific St. Two hour & a half ago I returned to the store having witnessed the entire destruction of about one hundred houses & stores," very fine .....Est.	200-250
145	<b>San Francisco Rec<sup>d</sup></b> Sept 30 orange red cds, boxed "30" steamship rate hs on inbound entire, red <b>Panama</b> origin pmk, file fold, very fine usage .....Est.	750-1,000
146	<b>San Francisco Cal</b> Nov 15 mostly clear black cds and boxed "80" rate hs on 1850 entire to <b>England</b> , red "Forwarded By Goodhue & Co New York" faint <b>forwarders</b> bkst, black "10" rate hs and ms "2/-" due, arrival bkst, file fold, fine usage .....Est.	150-200
147	( <b>San Francisco, Cal</b> ) their red "30" steamship due hs on inbound 1851 folded letter from Valparaiso, black "Smith & Lewis Panama" oval <b>Forwarded By</b> bkst, file fold, fine .....Est.	200-250
148	<b>San Francisco</b> May 23 red cds and "2" drop rate hs on 1851 folded letter <b>from Ecuador</b> , black <b>Zachrisson, Wilson &amp; Co. Panama</b> oval <b>forwarders</b> bkst, out of the mails to San Francisco, top panel aged, file fold .....Est.	150-200
149	<b>San Francisco Cal</b> May 31 orange cds, "Paid" hs and "40" rate hs on cover to Conn., good letter about the fire of May 3 mentions "We, of course, were burnt out, but having two or three houses which escaped....," cover small seal stain, fine .....Est.	150-200
150	<b>San Francisco 40</b> June 1 red cds with internal rate on cover to New Orleans, <b>Forwarded</b> back to San Francisco with red hs and ms rate addition for total "80" due, cover soiled, fine usage .....Est.	150-200
151	<b>San Francisco 6</b> Aug 1 orange cds with internal rate, "Paid" hs on partially printed 1851 letter to New York, very fine .....Est.	75-100
152	<b>San Francisco Rec<sup>d</sup></b> Nov 5 black cds and "20" steamship due hs on 1851 inbound folded letter <b>from Valparaiso</b> , black "Smith & Lewis Panama" oval <b>Forwarded By</b> bkst, weak strike, minor soiling, fine .Est.	150-200
153	<b>San Francisco Cal</b> May 16 red cds, "Paid" hs and "26" rate hs on entire to <b>France</b> , 1852 French entry cds and "8" (d) due hs, file fold, fine .....Est.	100-150
154	<b>San Francisco, Cal</b> , pair of folded letters with fancy "Paid 6" rate hs, July 15, 1852 usage in red and Oct 1, 1852 usage in blue, file folds, very fine .....Est.	200-250
155	<b>San Francisco Cal</b> Aug 15 blue cds, black "Paid" hs and blue "5" rate hs on 1852 printed circular to Mass., 5c printed matter rate for over 3,500 miles, edge soiled at left, very fine usage .....Est.	150-200

Francisco  
PAID  
37  
1859  
141

Madame M. W. Hattman  
Bremen  
142

PAID  
SAN FRANCISCO  
1  
JUL 10  
1859  
Almon Sanford  
Westport  
Connecticut  
143

PAID  
SAN FRANCISCO  
30  
JUL 10  
1859  
Mr W. P. Key  
Lyon & Co  
Paris  
144

PAID  
SAN FRANCISCO  
30  
JUL 10  
1859  
San Francisco  
California  
145

PAID  
SAN FRANCISCO  
10  
JUL 10  
1859  
London  
146

PAID  
SAN FRANCISCO  
30  
JUL 10  
1859  
Daniel L. L. L.  
147

PAID  
SAN FRANCISCO  
23  
JUL 10  
1859  
Francisco S. M.  
148

PAID  
SAN FRANCISCO  
40  
JUL 10  
1859  
Almon Sanford  
Westport  
Connecticut  
149

PAID  
SAN FRANCISCO  
16  
JUL 10  
1859  
San Francisco  
California  
150

PAID  
SAN FRANCISCO  
6  
AUG 6  
1859  
151

PAID  
SAN FRANCISCO  
20  
JUL 10  
1859  
Almon Sanford  
Westport  
Connecticut  
152

PAID  
SAN FRANCISCO  
16  
JUL 10  
1859  
San Francisco  
California  
153

PAID  
SAN FRANCISCO  
154X  
154X

PAID  
SAN FRANCISCO  
15  
JUL 10  
1859  
Almon Sanford  
Westport  
Connecticut  
155

156	<b>San Francisco Cal</b> Aug 21 black cds and "1" rate hs on 1852 local use folded letter, file fold, fine . . . . Est.	75-100
157	<b>San Francisco Cal Paid 6</b> pmks, an entire and 2 folded letters showing the pmk in blue Dec 1, 1852, in red Aug 16, 1853, and in black June 1, 1853, minor edge wear, fine strike . . . . . Est.	200-250
158	<b>San Francisco Cal</b> Feb 1 black cds, "Paid 26" handstamps on cover <b>to Switzerland</b> , red "New York Am Packet Mar 5" transit, red London transit bkst, 1853 red French entry cds, arrival bkst, aged . . . . . Est.	100-150
159	<b>San Francisco Cal</b> May 1 black cds and "Paid 26" rate hs struck twice on 1854 entire <b>to France</b> , red "New York Am Packet" cds, French entry cds and "16" (d) due hs, file fold, fine . . . . . Est.	100-150
160	<b>San Francisco Cal Free</b> Jul 5 cds tying 10c Green (#15, 3 margins) to cover to Vermont, very fine . . . . Est.	150-200
161	<b>San Francisco Cal</b> faint red cds on "St. Nicholas Hotel" illus. cover to Conn., fine design . . . . . Est.	100-150
162	<b>San Francisco Cal</b> , pair of ad covers with all over reverse "What Cheer House" illustrations, diff. text, one with 3c Dull Red (#11) tied, the other with 10c Green (#35) tied, both faculty, fine designs . . . . . Est.	150-200
163	<b>San Francisco Cal</b> Jan 17 1859 cds, "Ship" hs and "5" rate on inbound cover carried by <b>Clipper Ship</b> Sea Serpent and endorsed at top, docket on reverse "Dated Hong Kong Nov 29," fine . . . . . Est.	250-300
164	<b>San Francisco Cal</b> Dec 16 1859 cds and oval "Drop 1 ct" hs on "From Wells, Fargo & Co" imprint cover, local usage, fine . . . . . Est.	75-100
165	<b>San Francisco Cal</b> Jul 17 1862 cds and "Ship 4" hs on inbound folded letter <b>from Hong Kong</b> , red "Rozario & Co. Hong Kong" hs on reverse, file fold, slightly soiled . . . . . Est.	150-200
166	<b>San Francisco Cal</b> Sep 3 1863 cds and <b>Registered</b> hs on cover to Penna., fee paid in cash, postage with 3c Rose (#65) with target cancel, accompanied by a non-related registry receipt from San Francisco, cover edge tears, very fine usage . . . . . Est.	100-150
167	<b>San Francisco Cal</b> Feb 14 cds and "Ship 4" rate hs on inbound cover <b>from China</b> , "Olyphant & Co China" oval bkst, cover wrinkles and slightly toned . . . . . Est.	100-150
168	( <b>San Francisco, Cal</b> ) their "Ship 6" hs on cover to Conn., endorsed "Japan Oct 29, 1863" by sender at top, edges faulty . . . . . Est.	150-200
169	<b>San Francisco Cal</b> Oct 1 1864 double circle pmk, "10" due hs and large "Foreign" hs on inbound cover <b>from New South Wales</b> with strip 2d tied by "Sydney Jy 13 64" pmks, ms "per Barque Australind" endorsement, the Foreign hs used for short period of time, very fine . . . . . Est.	750-1,000
170	<b>San Francisco Cal</b> Aug 6 cds and cog cancel tying 3c Rose (#65, faulty) to cover to N.J., large "Due 7" hs to make 10c steamship rate and "Purser" hs at bottom left, 1867 docket, cover reduced slightly at left and sealed edge tear, fine strikes . . . . . Est.	250-300
171	<b>Santa Cruz Cal</b> June 27 ms pmk and "Paid 12½" rate on 1851 entire to Vallejo, file folds, very fine . . Est.	100-150
172	<b>Shasta</b> June 30 ms pmk and "Paid 40" rate on cover to Ill., original 1851 letter, last day of 40c rate, fine . . . . . Est.	250-300



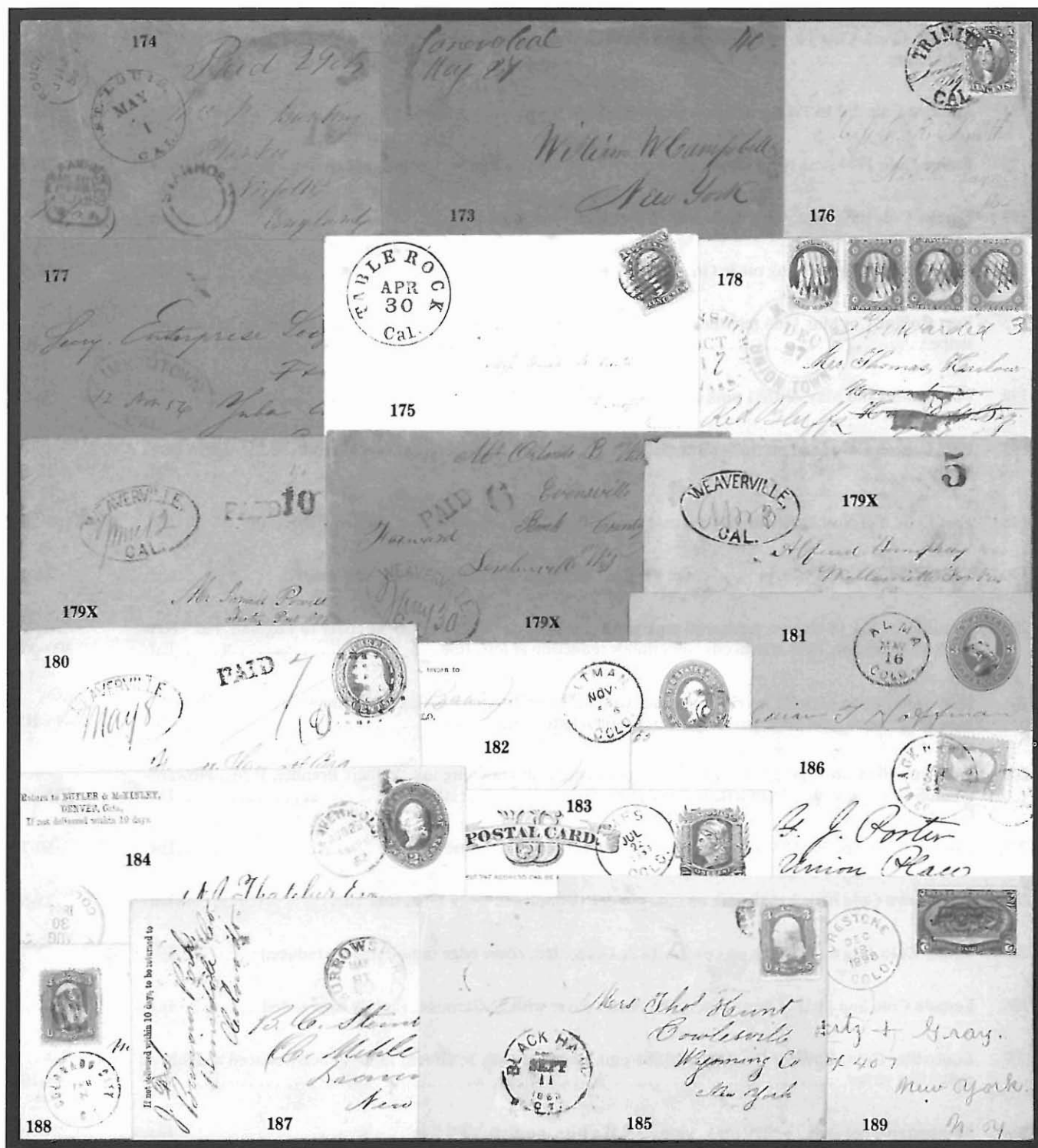


173	<b>Sonora Cal</b> May 27 ms pmk and "40" rate on cover to New York, fine . . . . . Est.	200-250
174	<b>St. Louis Cal</b> May 1 black cds and ms "Paid 29 cts" rate on cover to <b>England</b> , 1858 transit and arrival pmks, cover age spot and corner fault, fine strike . . . . . Est.	75-100
175	<b>Table Rock Cal</b> Apr 30 bold pmk on cover to Maine, 10c Green (#32, overlapping top) tied by grid, minor age spots . . . . . Est.	100-150
176	<b>Trinity Cal</b> cds with ms "June 15/59" date tying 10c Green (#32) to cover to Maine, slightly aged, fine strike . . . . . Est.	100-150
177	<b>Uniontown H.B. Cal</b> blue oval pmk, oval "Paid" hs, ms "12 Nov 56" date and "3" rate on cover to Yuba City, minor corner wear, fine . . . . . Est.	150-200
178	<b>Union Town H.B. Cal</b> blue double circle forwarding pmk and ms "Forwarded 3" on cover with three copies 3c Dull Red (#26, faults) and single 1c Blue (#24) used with brownish "Shrewsbury Mass" origin pmk, reduced slightly at right, fine usage . . . . . Est.	100-150
179	<b>Weaverville Cal</b> , 3 covers with oval pmks, in red with "Paid 10" hs, in black with "Paid 6" hs and "5" due hs, fine . . . . . Est.	150-200
180	<b>Weaverville Cal</b> oval pmk, red ms "May 8" date on 3c Red entire, with seal, to Kentucky, additional 7c paid in cash for 10c rate, "Paid" hs and ms "7" rate, cover edge worn, very fine usage . . . . . Est.	250-300

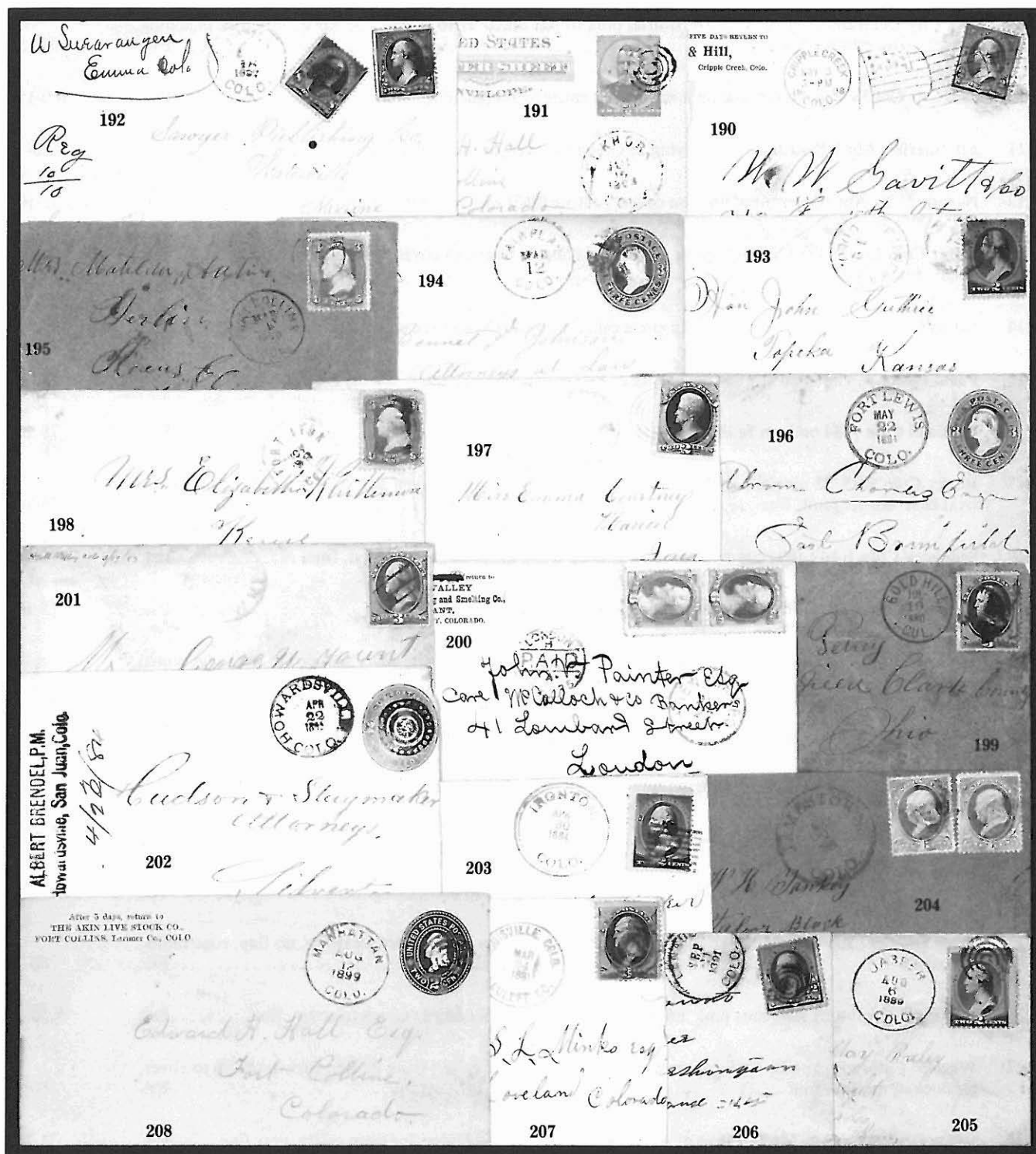
## COLORADO

181	<b>Alma Colo</b> May 16 pmk on 3c Green entire, very fine . . . . . Est.	25-50
182	<b>Altman Colo</b> Nov 25 1896 pmk tying 2c Green entire, fine . . . . . Est.	75-100
183	<b>Ames Colo</b> Jul 22 1888 pmk on 1c Black postal card, David Wood corres., light crease, fine . . . . . Est.	25-50
184	<b>Amethyst Colorado</b> Aug 30 1892 violet arrival pmk on 2c Green entire from Denver, reduced at left . . . . . Est.	25-50
185	<b>Black Hawk Point C.T.</b> Sep 11 1863 <b>territorial</b> pmk on cover with 3c Rose (#65) tied, reduced slightly at left, edges worn . . . . . Est.	75-100
186	<b>Black Hawk Point Col</b> Oct 31 '64 <b>territorial</b> pmk tying 3c Rose (#65) to Porter corres. cover, fine . . . . Est.	50-75
187	<b>Burrows Park Colo</b> Mar 18 1882 pmk on 3c Green entire, reduced irregularly at right . . . . . Est.	75-100
188	<b>Colorado City C.T.</b> Feb 8 <b>territorial</b> cds on cover with 3c Rose (#65) not tied, patriotic shield and piping on reverse, opened roughly at right, fine strike . . . . . Est.	200-250
189	<b>Crestone Colo</b> Dec 13 1898 pmk on cover with 2c Trans-Miss, "Moffat Colo" transit bkst, fine . . . . . Est.	25-50

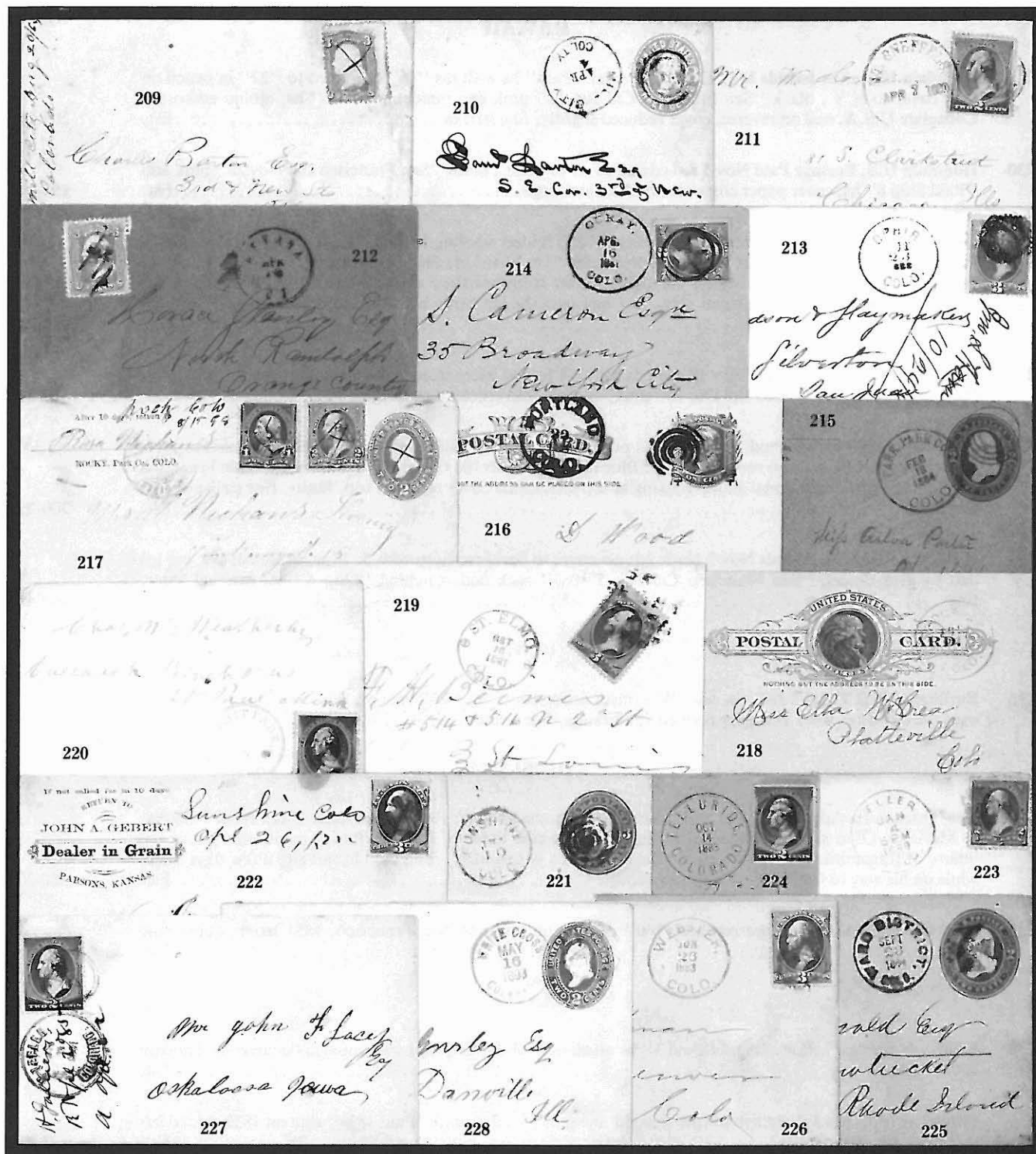




190	<b>Cripple Creek Colo</b> Nov 3 1898 involute flag machine cancel tying 2c Red to cc cover, reduced slightly at right, fine ..... Est.	100-150
191	<b>Elkhorn Colo</b> Jul 16 1883 pmk on 2c Grant letter sheet, fine ..... Est.	75-100
192	<b>Emma Colo</b> 1897 pmk tying 8c Brown to registered cover, 2c Red se, to right, about fine ..... Est.	25-50
193	<b>Eureka Colo</b> pmk on cover with 2c Red Brown tied, cover edge tear ..... Est.	25-50
194	<b>Fairplay Colo</b> Mar 12 pmk on 3c Green entire, 1877 docket, edges aged, fine strike ..... Est.	25-50
195	<b>Fort Collins Col</b> Mar 1866 <b>territorial</b> pmk on cover with 3c Rose (#65) tied, cover reduced at left and age stripe ..... Est.	75-100
196	<b>Fort Lewis Colo</b> May 22 1881 pmk on 3c Green entire, edge tear and aged at left ..... Est.	50-75
197	<b>Fort Lupton Colo</b> 1884 partially clear magenta duplex pmk tying 2c Vermilion to cover, reduced into perfs at top ..... Est.	25-50
198	<b>Fort Lyon Col</b> Nov 23 <b>territorial</b> pmk on cover with 3c Rose Grill (#94) not tied, ex Chase, fine ..... Est.	150-200
199	<b>Gold Hill Col</b> Jul 19 1880 pmk on cover with 3c Green, heavily soiled, faults, fine strike ..... Est.	25-50
200	<b>Grant P.O.</b> Jan 18 blue ms <b>territorial</b> pmk tying pair 6c Rose to Mining Co. cc cover <b>to England</b> , red “New York PO” transit, 1875 arrival cds, very minor reduction at left, fine ..... Est.	300-400
201	<b>Hall Valley Colo</b> 3/19/83 ms pmk on cover with 3c Green to La Messilla, N.M., forwarded with “Messilla New Mex” <b>territorial</b> pmk, partially clear, original letter, edges aged ..... Est.	75-100
202	<b>Howardsville Colo</b> Apr 22 1885 pmk on 2c Red entire, in matching ink “Albert Brendel, P.M., Howardsville, San Juan, Colo” hs to left, reduced irregularly at right, fine strikes ..... Est.	75-100
203	<b>Ironton Colo</b> Apr 30 1884 cds on cover with 2c Red Brown tied, fine ..... Est.	50-75
204	<b>Jamestown Colo</b> May 2 1885 pmk on cover with two copies 1c Gray Blue, fine ..... Est.	25-50
205	<b>Jasper Colo</b> Aug 6 1889 pmk on cover with 2c Green tied, cover edge faults, slightly reduced ..... Est.	50-75
206	<b>Lenado Colo</b> Sep 11 1891 large part strike cds on cover with 2c Carmine, slightly edge soiled ..... Est.	75-100
207	<b>Louisville, Colo, Boulder Co.</b> Mar 24 1881 pmk on cover with 3c Green, faulty, cover reduced roughly at right, fine strike ..... Est.	75-100
208	<b>Manhattan Colo</b> Aug 12 1899 pmk tying 2c Red entire, no flap, very fine ..... Est.	75-100



209	<b>Mill City Colorado</b> Aug 20/67 ms <b>territorial</b> pmk to left on cover to Penna., 3c Rose (#65) with matching cancel, cover minor edge faults . . . . .	Est.	100-150
210	<b>Mill City Col Ty</b> Apr 4 <b>territorial</b> pmk on 3c Pink entire to Philadelphia, fine . . . . .	Est.	100-150
211	<b>Mt. Sneffels</b> Apr 7 1890 duplex pmk tying 2c Green to cover, original letter, fine . . . . .	Est.	50-75
212	<b>Nevada C.T.</b> Apr 16 <b>territorial</b> pmk on cover, 3c Rose (#65) with ms cancel, fine . . . . .	Est.	75-100
213	<b>Ophir Colo</b> Oct 23 1882 magenta pmk and cancel tying 3c Green to cover, original letter, reduced roughly at left, fine strike . . . . .	Est.	50-75
214	<b>Ouray Colo</b> Apr 16 1881 cds and star in circle cancel tying 3c Green to cc cover, corner fault, fine . . . .	Est.	50-75
215	<b>Park, Park Co. Colo</b> Feb 18 1884 pmk tying 2c Red entire, original letter, slightly reduced, fine . . . . .	Est.	50-75
216	<b>Portland Colo</b> 1884 pmk on 1c Black postal card, David Wood corres., fine . . . . .	Est.	75-100
217	<b>Rocky Colo</b> 8/15/98 ms pmk on 2c Green entire <b>to Switzerland</b> , 1c Green and 2c Red with ms cancels, arrival bkst, corner fault, fine . . . . .	Est.	75-100
218	<b>Sedgwick Colo</b> Jul 12 1891 cds on 1c Black postal card to Platteville, arrival bkst, fine . . . . .	Est.	75-100
219	<b>St. Elmo Colo</b> Oct 16 1881 cds on cover with 3c Green tied, very fine . . . . .	Est.	75-100
220	<b>Summit Park Colo</b> Oct 11 1883 bluish cds on cover with 2c Red Brown, cover reduced at left, edge soiled . . . . .	Est.	50-75
221	<b>Sunshine Colo</b> Jul 10 blue pmk and cancel tying 3c Green entire, 1878 docket, slightly aged, fine strike. . . . .	Est.	50-75
222	<b>Sunshine Colo</b> Apr 26/75 ms <b>territorial</b> pmk on cc cover with 3c Green, small stain spots, fine . . . . .	Est.	150-200
223	<b>Teller Colo</b> Jan 4 1899 pmk on cover with 2c Red tied, original letter, cover edge wear, fine . . . . .	Est.	75-100
224	<b>Telluride Colorado</b> Oct 14 1883 pmk on cover with 2c Red Brown (#210), edge tear, very fine strike . .	Est.	50-75
225	<b>Ward District Colo</b> Sept 23 1884 duplex pmk with maltese cross tying 2c Brown entire, no flap, edge faults, fine strike . . . . .	Est.	50-75
226	<b>Webster Colo</b> Jun 23 1883 blue pmk and matching target cancel tying 3c Green to cover, fine . . . . .	Est.	50-75
227	<b>Wheeler Colorado</b> Apr 22 1885 duplex pmk with star in circle cancel tying 2c Red Brown (#210) to cover, ms docket, no flap, fine . . . . .	Est.	50-75
228	<b>White Cross Colorado</b> May 16 1893 pmk with star in circle cancel tying 2c Green entire, very fine . . . .	Est.	75-100





## HAWAII

- 229 **Honolulu Hawaiian Islands** May 12 red cds, oval "Paid" hs with ms "16" corrected to "22" in pencil on long cover to N.Y., black "San Francisco Cal Jun 16" pmk and matching "Paid" hs, albino embossed **Consulate U.S.A.** seal on reverse, cover reduced slightly, fine strikes .....Est. 200-250
- 230 **Honolulu U.S. Postage Paid** Nov 5 red cds on cover to Mass., black "San Francisco Cal Nov 28" pmk and "Paid Ship 8" hs, cover paper clip stain, faults, fine usage .....Est. 150-200
- 231 **Honolulu Hawaiian Islands** Mar 27 red cds on 1852 folded **whaling letter** to Mass., "San Francisco Cal May 1" cds and "12" ship rate hs, good letter dated "On board the Ship Euphrates, Capt. T.M. Peaks, at Sea, Lat 18.56, Lon 153.59, March 12, 1852," letter mentions their sperm oil and "we have heard bad news from the arctic Ocean...seven ships lost amongst the ice bergs but the crews were saved," address panel heavily aged, fine letter .....Est. 200-250
- 232 **Honolulu U.S. Postage Paid** Nov 17 red cds on 1854 folded letter from Lahaina to R.I., pair 3c Dull Red (#11) tied by "San Francisco Cal Dec 16" pmk, internal fold cracks, fine usage .....Est. 400-500
- 233 **Honolulu U.S. Postage Paid** Jun 8 red cds on cover to Penna., blue **Dudley C. Bates, Commission Merchant Honolulu H.I.** hs on reverse, pair 1c Blue (#24) tied with 10c Green (#35) to front by "San Francisco Cal Jun 22" pmk, additional stamp missing at top left, crude cover repair at top, faults, fine strike of forwarders hs .....Est. 200-250
- 234 **Honolulu Hawaiian Islands** Nov 5 black cds on cover to San Francisco with 5c Blue on Bluish (#9, cut in) tied by grid cancel, "San Francisco Cal Dec 5 1863" pmk and matching "Ship 6" hs, original letter, fine .....Est. 300-400

## IOWA

- 235 **Burlington Wis T.** Jul 5 red cds, with Wisconsin designation, ms "25" rate on 1838 folded letter to N.Y., used the day after Iowa Territory formed, fold faults, fine strike .....Est. 100-150

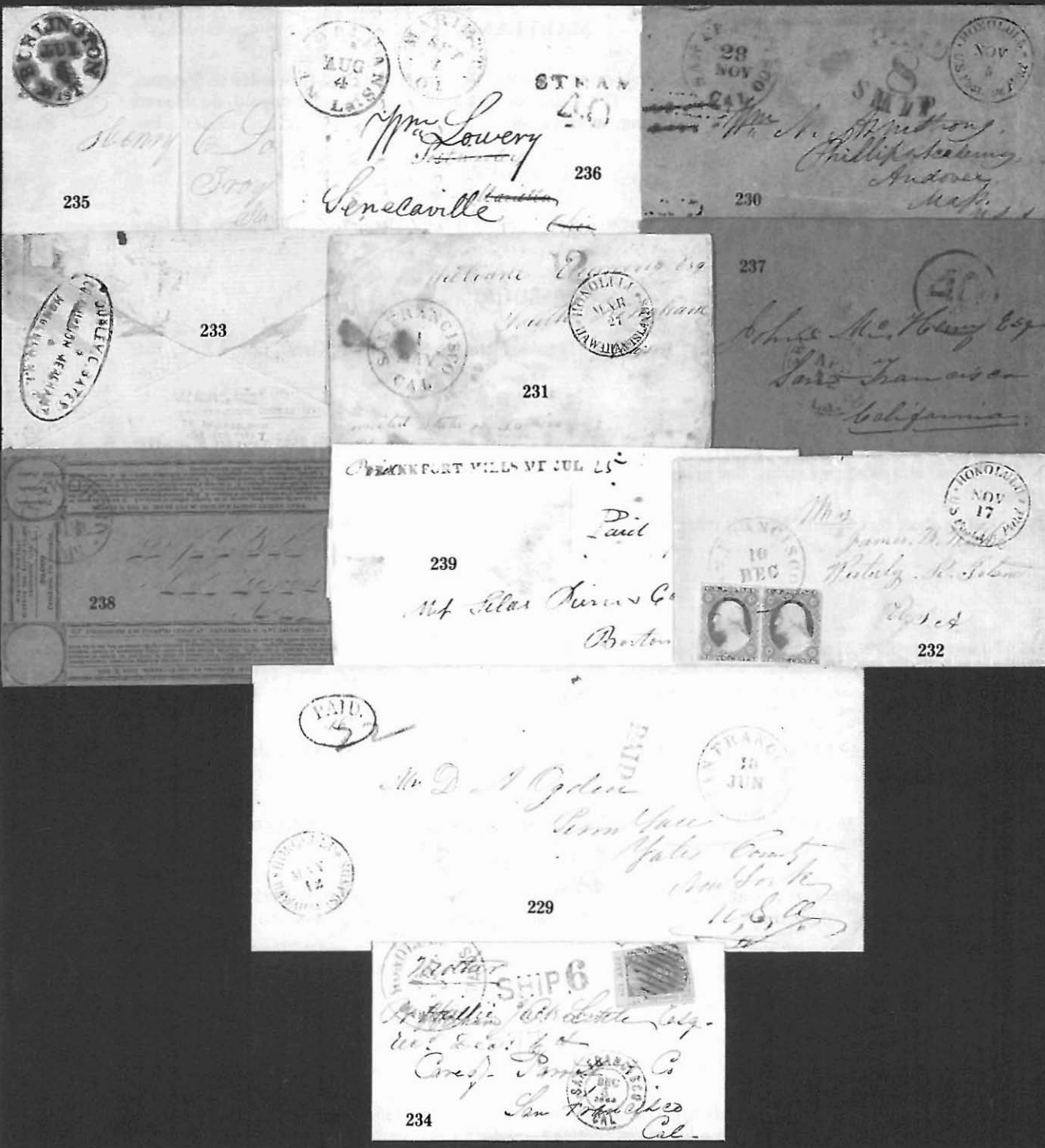
## LOUISIANA

- 236 **New Orleans La** Aug 4 black cds and "Steam 40" handstamps on 1849 folded letter dated **from Panama**, to Marietta, Ohio and forwarded with their faint red cds, letter of Henry Whitney mentions "I take the liberty of transmitting to you a letter to the father of a young man...who died in this city a few days since, while on his way to California," edges aged, fine .....Est. 250-300
- 237 **New Orleans La** Apr 12 red cds and "40" rate hs on cover to San Francisco, 1851 letter, about fine .....Est. 75-100

## MAINE

- 238 **Ellsworth Me** Apr 7 blue cds and "Paid 3" hs on all over Maine Liquor Law propaganda cover by Thuston & Co., very fine .....Est. 100-150
- 239 **Frankfort Mills Me Jul** reddish purple straight line pmk, ms date and "Paid 18¾" rate on 1832 folded letter to Boston, slightly aged .....Est. 75-100





## MARYLAND

- 240 **Easton, Md**, pair of covers from same correspondence to San Francisco, Cal. and **forwarded** to Sonoma, the first with "Paid" hs, ms "40" rate and "12½" due for forwarding, the second is unpaid, double rate with "80 + 25 = 105" total due, minor aging, very fine pair ..... Est. 200-250

## MISSISSIPPI

- 241 **Natchez Mi** Mar 20 blue cds and "40" rate hs struck twice on 1851 folded letter to San Francisco, file folds ..... Est. 75-100

## MISSOURI

- 242 **St. Louis May 5** two line pmk and ms "Free" on 1817 folded letter to Commissary Genl., fine ..... Est. 100-150

## NEVADA

- 243 **Ruby Valley Jul 13 territorial** cds tying 3c Rose (#65, faulty) to cover to Wisconsin, 1863 docket, cover corner tear and minor age stains, fine usage ..... Est. 500-750
- 244 **Silver Peak Nev** May 15 blue cds tying 3c Green entire, short paid usage to **Nova Scotia**, 1880 arrival bkst, fine ..... Est. 75-100

## NEW JERSEY

- 245 **Lawrenceville N.J.** straight line pmk, ms date and "18¾" rate on 1843 folded letter to Mass., fine .... Est. 100-150

## NEW YORK

- 246 **Buffalo N.Y.** Nov 1 blue oval pmk and black "80" rate hs on 1850 folded letter to Sacramento, file fold, fine ..... Est. 75-100
- 247 **New York** May 26 black cds, "40" rate hs and red "Paid" hs on cover to San Francisco, endorsed "pr Steamer Falcon" at top, cover edge wear, very fine 1849 usage ..... Est. 100-150
- 248 **New York** pair of covers to California, black "New York 40" cds on one, red "New York 40 cts" cds on other with "Paid" along rim at bottom, minor edge wear, fine strikes ..... Est. 150-200
- 249 **(New York)** their "30" steamship rate due hs on Jan 23, 1851 folded letter **from Panama** to N.Y., fine ..... Est. 100-150
- 250 **New-York** Apr 11 Ocean Mail pmk and "40" rate hs on cover to **Hawaii**, red crayon "10" at left, 1851 docket, small stain spot, cover edge wear, very fine usage ..... Est. 200-250
- 251 **New York** Jun 28 black Ocean Mail pmk and "80" in circle rate hs on 1851 Gibb corres. folded letter to San Francisco, carried out of the mails from Scotland, ms forwarded notation on reverse, file fold, late usage of this pmk ..... Est. 100-150



252	<b>New York</b> Oct 2 red Ocean Mail pmk, "Paid" hs and ms "120" rate on cover <b>to Brazil</b> , magenta ms "24" credit, endorsed in pencil "U.S. Mail Steamer California" at left, minor edge faults, fine . . . . . Est.	100-150
253	<b>New York 2 Cts</b> May 14 red cds on inbound cover carried out of the mails <b>from China</b> , red "Forwarded By Rawle Drinker & Co. Hong Kong" oval bkst and blue "Lemuel Goddard London" <b>forwarding</b> bkst, ms "paid in China" endorsement on front, cover edge faults, very fine usage . . . . . Est.	250-300
254	<b>New York 20</b> Apr 30 black pmk on 1853 entire, pr "Crescent City" to San Francisco, double rate due pmk, very fine . . . . . Est.	100-150
255	<b>New York 10</b> Aug due cds, part strike on Gibb corres. cover <b>to Scotland</b> endorsed "Per Str. J.C. Stephens to Panama, thence via N. York, p Adams & Co. Ex., to be mailed in N. York" at top, Glasgow arrival bkst, ms "2/-" rate, cover edge wrinkles, very fine usage . . . . . Est.	100-150
256	<b>N. York Steamship</b> dateless pmk and "Free" hs on 1855 folded letter from San Francisco, Denver correspondence, good letter mentions the murder of "Wall and Williamson...I believe by hired assassins" and subsequent murders of those tracking the assassins, interior panel aged, very fine . . . . . Est.	200-250
257	( <b>New York</b> ) their "Steamship 10" hs on inbound folded letter <b>from Ecuador</b> , British Office "Guayaquil Sp 14 1861" bkst, red "Paid-To-Panama" hs and black "Panama Se 21 1861" transit cds, very fine . . Est.	100-150

## OHIO

258	<b>Bristolville O.</b> Dec 4 ms pmk and "Paid 3" on lithographed, Peace propaganda cover to Ohio, Valentine imprint on flap, cover stain and restored edge faults, fine design . . . . . Est.	150-200
259	<b>Columbus O.</b> May 12 red cds and "40" rate hs on cover to San Francisco, edge soiled, fine . . . . . Est.	100-150
260	<b>Randolph O.</b> Feb 9 ms pmk and "Paid 3" on "Ocean Penny Post" illustrated cover, "Myers & Compt London" imprint, age stain, fine design . . . . . Est.	200-250

## PENNSYLVANIA

261	<b>Phil<sup>a</sup></b> Sep 7 red boxed ds, matching <b>full rigged ship</b> hs and ms "20¾" rate on 1835 folded letter <b>from Ecuador</b> to Salem, Mass., double oval "Forwarded, A. Sweet, U.S. Consul, Guayaquil" bkst and "Forwarded By I.B. Feraud Panama" double circle <b>forwarders</b> hs, very fine . . . . . Est.	750-1,000
-----	--	-----------

## TEXAS

262	<b>Ft. Belknap Tex</b> May 26/59 ms pmk and "Paid 3" on cover to New York, ms "Via Butterfield O.L.M." (Overland Mail) endorsement at top, cover restored at left, very fine usage . . . . . Est.	200-250
263	<b>Port Lavaca Txs</b> Mar 27 cds and ms "40" rate on 1850 folded letter to San Francisco, fine . . . . . Est.	100-150

## UTAH TERRITORY

264	<b>Camp Floyd U.T.</b> February 25 rimless cds tying 3c Dull Red (#26) to cover to St. Louis, cover stain and edge wear, fine strike . . . . . Est.	400-500
-----	---	---------



## INDEPENDENT MAILS

265	<b>Western Express</b> , balance of collection, 120 covers or folded letters and 6 printed receipts, incl. a few unused franks, used items with good range of material incl. Reynolds, Todd & Co., Todds Express, Swift & Co., W.A. Robinson Express Agent, Adams & Co., Evert Snell & Co., Truman & Co., Bamber, etc., W.F. & Co. usages incl. better towns with Idaho, Oregon and Nevada, many with faults but several scarcer items . . . . . Est.	1,500-2,000
266	<b>Adams Express Co. Nashville</b> Apr 6 mostly clear oval ds on 3c Red entire to Vice President, Andrew Johnson at Greenville, Tenn., their "Knoxville Tenn Apr 7" oval ds at left, docketed "In regard to Special Mail agent for Tennessee," opened irregularly at right, very fine usage. . . . . Est.	500-750
267	<b>Adams &amp; Co Sacramento</b> Nov 8 mostly clear, black ds on cover to San Francisco . . . . . Est.	75-100
268	<b>Alta Express Co. Angels</b> oval hs on franked 3c Red entire to San Francisco, very fine . . . . . Est.	200-300
269	<b>Alta Express Co. Auburn</b> oval hs tying franked 3c Red entire to Sacramento, light wrinkles, fine . . . . Est.	100-150
270	<b>J. Bamber &amp; Co<sup>s</sup> Contra Costa Express Paid</b> oval hs on 3c Pink entire to San Francisco with their "Answer By Bamber & Co. <sup>s</sup> Express" directive hs, 1861 docket at left, very fine . . . . . Est.	75-100
271	<b>Becker &amp; Co<sup>s</sup> Express Landers Bar</b> black oval hs on front and reverse of May 7, 1854 entire to French Corral, fine . . . . . Est.	1,000-1,250
272	<b>Berford &amp; Co<sup>s</sup> Californian Express</b> blue oval hs and their red "B. & C <sup>o</sup> Collect" hs on entire to San Francisco, repaired tears, fine strikes . . . . . Est.	400-500
273	<b>Berford &amp; Co. Letter &amp; Package Express</b> , California, mostly clear red shield hs and "B. & C <sup>o</sup> Collect" hs on brown cover to San Francisco, cover edge worn . . . . . Est.	250-300
274	<b>Berfords Express San Francisco</b> black double oval hs, "Collect" hs and ms "\$1" due on entire to San Jose, fine . . . . . Est.	300-400
275	<b>Bowers Express, Forwarded By</b> black hs on cover to Vermont, faint "San Francisco 40 Nov 15" orange cds, cover edge worn, ex Haas, fine strike . . . . . Est.	400-500
276	<b>California Letter Express Company</b> unused printed frank with boxed "Paid" hs, very fine . . . . . Est.	100-150
277	<b>California Penny Post</b> , Penny-Postage Paid, 5 imprint cover (#34LU9) used to San Francisco, 3c Dull Red (#11) with ms cancel, fine . . . . . Est.	200-250
278	<b>Cheney, Fiske &amp; Co United States &amp; Canada Express</b> shield hs on cover to Leominster, Mass., partially clear "Ogdensburgh N.Y. Paid 3 cts Jun 25" cds, original 1855 letter dated from Ogdensburgh, fine . . . . . Est.	250-300
279	<b>Cheney, Fiske &amp; Co. United States &amp; Canada Express</b> black on green label, worn, on reverse of cover to Goveneur, N.Y., cover worn and soiled . . . . . Est.	100-150
280	<b>C.O.C. &amp; P.P. Express</b> Denver City K.T. Jun 29 oval ds on cover to Leavenworth City, 3c Dull Red (#26) tied by grid cancel, cover minor reduction at left, fine . . . . . Est.	400-500





281	<b>Central Overland California &amp; Pikes Peak Express Company</b> Denver City K.T. Sep 11 oval ds on 3c Red entire to Maine, their "St. Joseph Mo Sep 17" ds, entered the mails with "Saint Joseph Mo Sep 18 1860" pmk, minor edge wear, very fine .....Est.	750-1,000
282	<b>Copley &amp; Co's Miners Express</b> partially clear red oval hs on 10c Green entire to N.Y., entered the mails with blue "Marysville Cal Paid By Stamps Jun 19" pmk and grill cancel, very minor foxing, P.F. cert., ex Barkhausen .....Est.	400-500
283	<b>Cram Rogers &amp; Co Express Yreka</b> blue oval hs and boxed "Paid" on cover to Oregon Territory, <b>Adams &amp; Co. Sacramento</b> May 5 blue ds, partially clear, at left, fine conjunctive usage, ex Haas .....Est.	400-500
284	<b>Cram Rogers &amp; Co. Express</b> , San Francisco Cal blue oval hs on cover to Shasta, Cal., their ms "collect 2.50" at foot, "New Haven Conn Aug 23" origin cds and ms "10" rate, cover tears and edge soiled ..Est.	200-250
285	<b>Cram Rogers &amp; Co's Shasta Express</b> blue double oval hs on inbound cover, "Sacramento City Cal Feb 23" cds, "5" rate hs and black "Adv" advertised hs of Shasta, ms "2.50" express rate, original 1853 letter on Banking Office imprint stationery, cover minor edge faults, very fine strike .....Est.	500-750
286	<b>Eureka Express Co.</b> franked 3c Green entire to San Francisco, black "Wells Fargo & Co. San Juan Cal Dec 4" ds, edge tears at top, fine .....Est.	100-150
287	<b>Evert Snell &amp; Co. Feather River Express</b> blue oval hs on cover to Marysville, Cal., red "Newburgh N.Y. Nov 12" cds and "10" rate, 1852 docket on reverse, cover light stains at foot .....Est.	100-150
288	<b>Everts Wilson &amp; Co.</b> , two 10c Green entires with diff. franks, one with red "Strawberry Valley Cal Jun 3" pmk, the other with "La Porte Cal Jun 27 1860" pmk, both edge faults, the second stained .....Est.	200-250
289	<b>Favor's St. Johns, Eastport and Boston Express</b> black on orange label on June 25, 1849 entire from Eastport, Maine to Boston, very fine .....Est.	250-300
290	<b>Favor's Package Express</b> , Forwarded By, red, six line boxed hs on reverse of 1850 folded letter <b>from St. John, New Brunswick</b> to Mass., red "Boston 10 cts Jul 25" cds and black "Steam" hs, fold at foot partially split, very fine usage .....Est.	300-400
291	<b>Favor's Express</b> red, triple circle bkst on 1851 folded letter <b>from St. John, New Brunswick</b> to Philadelphia, red "Boston 10 cts Apr 7" pmk and black "Steam" hs, very fine .....Est.	400-500
292	<b>Favor's Express</b> red, triple circle hs on reverse of 1851 folded letter <b>from St. John, New Brunswick</b> to Philadelphia, black "Boston 5 cts Nov 30" pmk and "Steam" hs, slightly aged fold through bkst, fine Est.	300-400
293	<b>Favor's St. John, N.B. Eastport and Boston Express</b> black on green label on oversize entire to <b>Saint John, New Brunswick</b> , edge tear and folds, very fine usage .....Est.	200-250
294	<b>Fiske &amp; Co's United States &amp; Canada Express</b> black on green label on cover to Boston, pencil "Paid" notation, cover edge tear, reduced .....Est.	100-150
295	<b>Fiske &amp; Co's United States &amp; Canada Express</b> imprint on cover to Pepperell, Mass endorsed "Deliver Immediately," fine .....Est.	100-150



296	<b>Fiske &amp; Rice United States And Canada Express</b> shield hs on Jan, 1854 long folded letter from South Royalston to Boston, ms "Paid 38," docket at right, worn fold, fine strike .....Est.	200-250
297	<b>Freeman &amp; Co. Express</b> double oval hs on cover to Sacramento, minor edge tear, fine .....Est.	100-150
298	<b>Freeman &amp; Co<sup>s</sup> Express</b> green frank on 10c Green entire to New York, blue "Marysville Cal" pmk and star cancel, cover stain at foot and sealed edge tear .....Est.	75-100
299	<b>Freeman &amp; Co<sup>s</sup> Express Panama,</b> Cova & C <sup>o</sup> Agents red oval hs on 1856 entire from Panama to San Francisco, file fold, fine .....Est.	200-250
300	<b>Gahagan &amp; Howe City Express</b> their blue oval hs struck twice on cover to "North Side Francisco," cover edge wear, minor soiling, fine .....Est.	300-400
301	<b>Gregory's Atlantic and Pacific Express,</b> Forwarded by Thompson & Hitchcock, 4 line black hs on 1851 folded letter to Marysville, Cal, addressed to Frank Rumrill, fine .....Est.	150-200
302	<b>Gregory's Express Office,</b> San Francisco blue 3 line hs and oval "Paid" hs on Oct 4, 1851 folded letter to New York, black "Gregory's Atlantic and Pacific Express, Forwarded by Thompson & Hitchcock, 149 Pearl St., N.Y." four line hs, fine .....Est.	250-300
303	<b>Gregory's Express Office,</b> San Francisco, pair of folded letters from same corres. to Sacramento with blue, 3 line hs, one with "Paid" oval, the other "Not Paid" oval, minor edge aging, fine .....Est.	200-250
304	<b>Gunnison's Express Boston</b> red oval hs and ms "pd 12½ cts" on Oct 28, 1844 folded letter from Saint John, New Brunswick to Boston, fine .....Est.	200-250
305	<b>Gunnison's Express Boston</b> red oval hs and boxed "Collect 6 cents" hs on May 27, 1845 folded letter from Saint John, New Brunswick to New York, rate corrected in pencil to "12½," file folds, fine usage . . . Est.	200-250
306	<b>Hinckley &amp; Cos Express Denver City</b> Jul 30 1860 ds on inbound 10c Green entire to Denver, "Georgetown Cal Jun 29 1860" origin pmk, cover aged, very fine usage .....Est.	400-500
307	<b>Hinckley &amp; Cos Express Denver City</b> very indistinct ds on 3c Red entire to Maine, ms "35 Paid" at bottom left indicating usage from one of the outlying areas, entered the mail with "Saint Joseph Mo Sep 11 1860" pmk, cover creases .....Est.	100-150
308	<b>Hinckley &amp; Cos Express Denver City</b> Oct. 4, 1860 ds on inbound cover to Denver, 3c Dull Red (#26, slightly faded) tied by "Cleveland O." origin pmk, cover minor edge wear, fine usage .....Est.	250-300
309	<b>Hinckley &amp; Co. Express Denver City</b> Feb 11 1861 ds on their franked 3c Red star die entire to Missouri, entered the mails with green "Saint Joseph Mo Feb 22" pmk, crude repair at top center and folds. . . . Est.	200-250
310	<b>Hinckley &amp; Cos Express Denver City</b> Apr 1, 1861 ds on inbound cover to Golden City, J.T. (Jefferson Territory), 3c Dull Red (#26, faulty) tied, "Philadelphia Pa" origin pmk, ms "Col 10" due for carriage to Golden, cover edge faults, fine usage .....Est.	200-250
311	<b>Hoffman &amp; Co. Express,</b> Forwarded By, black oval hs on 1850 folded letter to Sacramento, ms "Milan Ma June 7" pmk and "40" rate, age discoloration, file folds, fine strike .....Est.	400-500

296

128.00  
 FIRE & RICE  
 United States  
 AND  
 CANADA  
 EXPRESS

by Express *paid*

PAID  
 FREEMAN & CO'S  
 THROUGH OUR CALIFORNIA EXPRESS

298

Mrs John J. Gier  
 No 136 Fifth Avenue



297

299



300

Miss A. Wells



311

301

302

Miss Howland & Apple

Gregory's Atlantic and Pacific  
 EXPRESS  
 Forwarded by THOMPSON & HUTCHINGS  
 140 TRAIL STREET N.Y.

New York

303X

Mr. Walton C. D.

Corner of 5th and J Sts

303X

Sacramento

305

Richard. Irons Esq  
 New York

306

C. C. Carpenter Esq

San Francisco City

304

John H. H. H.  
 Boston

307



309

Mrs J. B. Arnold  
 Carrollton

310

Briggs  
 San Francisco City

308



- 312 **Holladay Overland Mail and Express Company** franked 3c Pink entire to Omaha, after taken over by W.F. & Co., "Berwick Ill" origin pmk, blue **Wells Fargo & Co.** "Omaha Dec 19 67" ds, addressed to Nat Stein and with "Chas. Parks picture enclosed" docket, fine ..... Est. 200-250
- 313 **Hopkinson's Express** franked 3c Pink entire to Nevada City, ms "Chalk Bluff May 22/65" docket, edge tear and spindle hole ..... Est. 150-200
- 314 **Jones & Russells Pikes Peak Express Co.**, Denver City, Sep 15 1859 ds on 3c red entire to Ill., entered the mails with "Leavenworth City K.T. Sep 24 1859" pmk, file fold and soiled, fine strike ..... Est. 250-300
- 315 **Jones & Russell's Pike's Peak Express Co.**, Denver City, Jan 5 1860 ds on cover to Wis., 3c Dull Red (#26) tied by "Leavenworth City K.T. Jan 13 1860" pmk, cover minor edge wear, fine ..... Est. 300-400
- 316 **Jones & Russell's Pikes Peak Express Co.** Denver City, Apr 12 1860 ds on cover to Virginia, 3c Dull Red (#26) tied by "Leavenworth City K.T. Apr 19 1860" pmk, fine ..... Est. 400-500
- 317 **Langton's Pioneer Express** Downieville part strike blue oval hs on franked 3c Pink entire to San Francisco, **Wells, Fargo & Co** Marysville Aug 11 blue oval ds, minor edge wear, fine conjunctive usage ..... Est. 100-150
- 318 **La Porte Express Co.** franked 3c Pink entire to San Francisco, their "Aug 22" blue ds, drug store hs at left, 1866 docket, very fine ..... Est. 250-300



- 319 **Leavh City & Pikes Peak Express Co.** May 21 1859 ds on 3c Red entire to Ohio, "Leavenworth City K.T. Jun 3 1859" pmk, original letter of E.P. Stout dated from Denver City, very fine ..... Est. 3,000-4,000
- 320 **N.O.U.S. City Post** Jul 3 blue carrier, shovel ds on mourning cover to Delaware, 3c Dull Red (#11) with grid cancel, red "New Orleans" cds, fine ..... Est. 150-200



Handed Green's by 2/10  
Charles B. Buff  
aimed wait

HOPKINSON'S EXPRESS.  
PAID.

313

James Whartney Esq  
Proada City  
Calif



Holland  
erland Mail and Express  
Company



Chat Steim Esq  
apt Wells Fargo & Co  
Omaha  
Nebr

312

Poland  
314  
Schuler Co  
Ill



Mr John Wilson  
Springgreen  
Tack Co  
Wis

315

L. B. Wether  
Valley Green  
Calif



317

Mesa Antonio Daneri

316

Dr Robt E Elligood  
Concord  
Sussex Co  
Delaware

320



Valley Express Co.



Mr. Saml Hill  
Northampton  
San Francisco  
Calif

318

321	<b>N.O.U.S. City Post</b> Jul 30 green <b>carrier</b> , shovel ds on cover to Va., 3c Dull Red (#11) tied by black grid, red "New Orleans La July 31" pmk, 1852 docket, cover aged ..... Est.	100-150
322	<b>N.O.U.S. City Post</b> Apr 25 blurred <b>carrier</b> cds on inbound, 1856 folded letter, 3c Dull Red (#11) tied by "Nacogdoches Tex Apr 20" cds, aged, fine usage ..... Est.	100-150
323	<b>Pacific Union Express Co.</b> red frank on 3c Pink entire to Shasta, senders "Dec 31 1869" San Francisco ds, believed to be the latest possible date as W.F. & Co. took over in Jan, 1870, reduced at left ..... Est.	100-150
324	<b>N.O. Pauly's Express</b> franked 3c Pink entire to Quincy, faint blue hs, black "Gibsonville Apr 16" straight line hs, opened roughly at left affecting frank ..... Est.	200-250
325	<b>Penny Post Paid</b> red circle <b>carrier</b> hs on local use cover, red "Boston Dec 4" cds and "Paid" hs, very fine ..... Est.	150-200
326	<b>Forwarded by G.B. Post &amp; Co.</b> ms endorsement at foot of 1851 folded letter to <b>Hawaii</b> care of Post & Co., San Francisco, red "Boston Mass Mar 25" cds and "80" rate hs, heavy stain spot, very fine usage .... Est.	300-400
327	<b>G.B. Post &amp; Co., Forwarded By</b> , San Francisco boxed hs on cover to New York, two copies 3c Dull Red (#11, faults) tied by faint "San Francisco Cal" pmk, minor edge wear, very fine strike ..... Est.	300-400
328	<b>Ramon Leon Sanchez</b> , Cartagena N.G. red "Forwarded By" oval and magenta "Forwarded By Geo. W. Fletcher, Aspinwall N.G." oval hs on 1855 folded letter to New York with their "Steamship 20" hs, ex Haas, very fine ..... Est.	250-300
329	<b>Reynolds &amp; Co. Express</b> black oval hs on cover to Stockton, Cal., red "New Castle Me Sep 21" cds and ms "40" rate, minor age spot, fine ..... Est.	300-400
330	<b>Reynolds &amp; Co. Express</b> black oval hs and blue oval "Forwarded By" <b>Browns Express</b> on brown cover to San Francisco, ms "1.50" and "40" rates, blue "Stockton Cal 40 Oct 14" pmk on reverse, cover somewhat aged, very fine conjunctive usage ..... Est.	1,000-1,250
331	<b>W.H. Robinson, Express Agent</b> , Sacramento oval hs on cover to Sacramento, pair 3c Dull Red (#11) with ms cancels, "Jonesville N.Y. Sep 10" origin pmk at left, repaired file folds, fine strike ..... Est.	150-200
332	<b>San Francisco City Letter Express</b> bluish framed hs on cover with street address, small repaired edge tears at top, very fine strike ..... Est.	750-1,000
333	<b>San Francisco Letter Express</b> blue, horseman illus. hs on local use cover, matching "Paid" hs, ex Jessup, very fine ..... Est.	750-1,000
334	<b>San Francisco Letter Express</b> blue horseman illustrated oval hs on cover addressed to the Exchange Building, soiled and edges aged, very fine strike ..... Est.	500-750
335	<b>San Francisco Letter Express</b> blue printed frank and boxed "Paid" hs on cover to the Branch Mint, pencil "3 P.M." at top, very fine ..... Est.	500-750
336	<b>W.K. Singer &amp; Co's Feather River Express</b> blue oval hs on cover to Bidwells Bar, very minor edge stain, fine ..... Est.	250-300



337	<b>W.E. Singer &amp; Co's Feather River Express</b> blue oval hs on 3c Red entire to Bidwells Bar, Nesbitt seal on reverse, 1855 docket, minor surface rub, ex Lichtenstein, fine .....Est.	250-300
338	<b>Forwarded by Starkey Janum &amp; Co. Honolulu, Oahu</b> red oval hs on cover to Oswego, N.Y., entered the mails with black "San Francisco Feb 8" cds and "40" rate hs, endorsed "pr Tepic" at top, good original letter, dated at Honolulu on Jan 14, 1850, of Joel Turrill the U.S. Consul, cover very minor surface rub, ex Caspary, very fine usage .....Est.	1,000-1,250
339	<b>Thomes &amp; Skaden's Express</b> franked 3c Green entire to San Francisco, blue <b>Wells Fargo &amp; Co. Reno</b> partially clear hs, cover small corner stain, about fine .....Est.	300-400
340	<b>Todd &amp; Co. Express</b> shield hs on 1851 entire to San Jose, "Paid" hs with ms "to S.F." and "Collect" hs of <b>Berford's Express</b> , repaired edge tear and creases, fine usage .....Est.	200-250
341	<b>Todds Express</b> shield hs and "From San Francisco" hs on cover to Carson's Creek, spindle hole, ex Haas, fine strike .....Est.	250-300
342	<b>Todds Express</b> shield hs and "From Stockton" hs on 1850 folded letter to San Francisco, file fold, ex Clifford and Haas, fine .....Est.	300-400
343	<b>Todd's Express Office Sonora</b> boxed blue hs on cover to San Francisco, ex Clifford, very fine .....Est.	250-300
344	<b>Truman &amp; Cos Express</b> train illustrated frank on 3c Pink entire to San Jose, ms "S.F. Nov. 4 68" cancel, corner stain at bottom left .....Est.	100-150
345	<b>Turner's American Express</b> Boston hs on cover to New York, fragment of original enclosure with "Saint John, New Brunswick, July 15, 1862" date, minor wrinkles, very fine .....Est.	500-750
346	<b>Wells Fargo &amp; Co., \$2 Red Pony Express (#143L1, cut in)</b> tied to 10c Green star die entire (#U33) by blue "San Francisco May 25" running pony ds, entered the mails with green "St. Joseph Mo Jun 6" cds also tying adhesive, cover reduced at right bisecting the entire stamp, ex Knapp .....Est.	2,500-3,000
347	<b>Wells Fargo &amp; Co. 25c Red Virginia City Pony (#143L9, full margins, minor gum soak)</b> tied to franked 3c Pink entire to San Francisco by blue "Virginia City N.T. Jan 13" oval ds, minor edge tear, very fine ..Est.	2,000-2,500
348	<b>Wells Fargo &amp; Co., 25c Blue Virginia City Pony Express (#143L8, full margins)</b> tied to frank 3c Pink entire to San Francisco by blue "Aurora" hs, Crittenden corres. cover with original April 19 (1863) letter, cover edge tears at top, very fine .....Est.	1,500-2,000
349	<b>Wells Fargo &amp; Co., 25c Blue Virginia City Pony Express (#143L8, left margin copy, tears at right)</b> tied to franked 3c Pink entire to San Francisco by "Virginia C'y N.T. Nov 5" ds, similar strike tying entire, 1863 docket, cover edge discoloration and tears at foot, fine usage .....Est.	500-750
350	<b>Wells Fargo &amp; Co Express</b> San Francisco, blue boxed hs and "Free" oval hs on cc cover to Sonora, ms "with coin \$3,654.07" at left and endorsed "Free R.N.W." at top, 1854 W.F. & Co. "Receipt For Treasure" enclosure dated at Sonora, cover creases and minor edge tears, very fine usage .....Est.	150-200
351	<b>Wells Fargo &amp; Co. Express</b> Victoria blue oval hs on franked 3c Red entire to N.Y., entered the mails with "New York Feb 12 1859" pmk, very fine usage .....Est.	300-400





352	<b>Wells Fargo &amp; Co. Pl. Ville Boise I.T.</b> blue oval ds tying “Boise Mines - Paid 50 Cts” franked 3c Pink entire to Oregon, edges faulty and soiled .....Est.	150-200
353	<b>Wells Fargo &amp; Co.</b> Victoria Aug 18 blue oval ds tying 3d Blue to “Victoria and British Columbia” franked cover to San Francisco, additional strike at left, 1870 docket, cover reduced slightly at right, fine .....Est.	400-500
354	<b>Wells Fargo &amp; Co.</b> Salt Lake City U.T. partially clear blue oval ds on franked 3c Green entire to San Francisco, repaired spindle hole .....Est.	100-150
355	<b>Wells Fargo &amp; Co. San Francisco Cal</b> magenta ds tying franked 2c Green entire to Redding, Cal, blue <b>Steamer Emily</b> hs, docketed as being from Marshfield, Oregon, fine .....Est.	75-100
356	<b>Wells Fargo &amp; Co. Express</b> from Winfield, Kan. black on orange, train illus. label on small fragment with \$1 Black (#261) tied with 5c Brown and 1c Blue, crease, very fine usage .....Est.	300-400
357	<b>Whiting &amp; Co’s Express</b> frank on legal size cover to San Francisco, <b>Wells Fargo &amp; Co. Express</b> from Marysville orange label, 2 copies 3c Rose (#65, faults) tied by blue Company oval, cover reduced slightly, ex Hackett, fine usage .....Est.	100-150
358	<b>Whiting &amp; Co’s Feather River Express</b> franked 3c Red entire to Mass, additionally franked with pair 3c Dull Red (#26) and single 1c Blue (#24, se) tied by blue grid cancels, matching “Marysville Cal Paid By Stamps May 4” pmk, very light soiling, fine .....Est.	250-300

### SAN FRANCISCO LETTER BAG OPERATORS

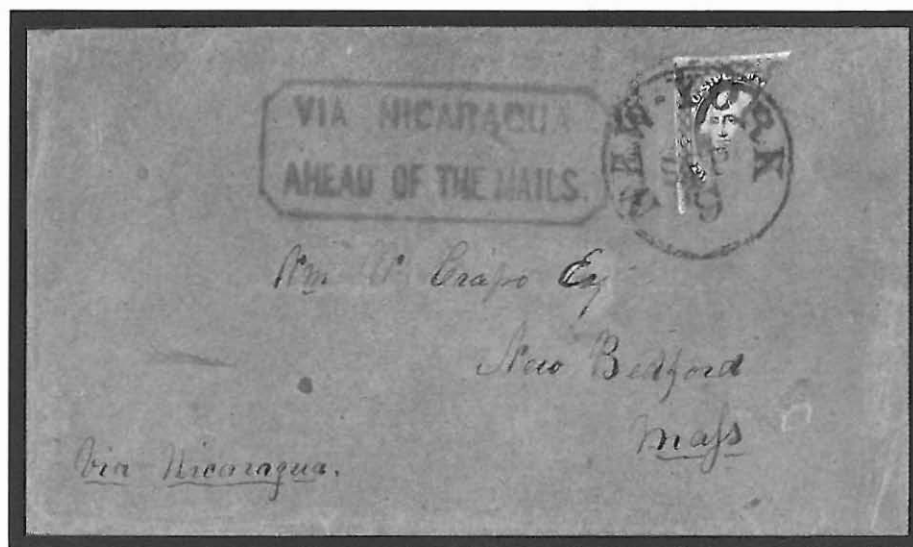
*In San Francisco several individuals operated a service for delivery of a customer’s mail to any steamer on its sailing date. Among the more famous of these were J.W. Sullivan, G.L. Leland and Charles Kimball (The Noisy Carrier). The markings employed by them usually included the “Via Nicaragua” reference if the letter was to go by a non contract steamer.*

359	<b>Independent Line Ahead Of The Mails</b> , Uncle Sam and North Star Via Panama oval hs on cover to Ill., two copies 3c Dull Red (#11, faulty) tied by faint “New York Sep 27” pmk, cover edge faults, very fine usage .....Est.	750-1,000
360	<b>Leland, Via Nicaragua Ahead Of The Mails</b> green boxed hs on cover to Maine, pair 3c Dull Red (#11) tied by “New York Ship Nov 9” pmk, cover corner crease, ex Wiltsee, fine .....Est.	300-400
361	<b>Leland, Via Nicaragua Ahead Of The Mails</b> green boxed hs on cover to N.Y., two copies 3c Dull Red (#11) tied by “Steam Ship” cancels, minor cover stain, fine .....Est.	300-400
362	<b>Noisy Carriers Publishing Hall, San Francisco</b> , Forwarded Via Nicaragua green marquee hs on cover to Mass., pair 3c Dull Red (#11) tied by “New York Ship Jan 2” pmk, “Parker & Noyes” senders cachet on reverse, cover minor edge wear, ex Haas, very fine .....Est.	400-500
363	<b>Noisy Carriers Publishing Hall, San Francisco</b> , Forwarded Via Nicaragua green marquee hs on 6c Green entire to N.Y., entered the mails with “New York Ship Dec 2” pmk, cover repaired edge tears, ex Barkhausen and Jessup, fine usage .....Est.	300-400
364	<b>Noisy Carriers Publishing Hall, Charles Kimball Proprietor</b> three line hs, well struck, on cover to Penna., two copies 3c Dull Red (#11, one partially torn away) tied by “San Francisco Cal Jul 1” pmk, very fine Est.	750-1,000





- 365 **Noisy Carriers Publishing Hall, Charles P. Kimball Proprietor** three line hs, mostly clear, on cover to Conn, 10c Green (#15, cut in) tied by "San Francisco Cal Mar 20" pmk, original 1856 letter, cover minor edge soiling, fine .....Est. 500-750
- 366 **Noisy Carrier's Mail** blue boxed hs on cover to Mass., 10c Green (#15) tied by "San Francisco Cal" pmk, cover minor edge wear, fine .....Est. 500-750
- 367 **Noisy Carrier's Mail San Francisco** oval hs on 10c Green entire to Mass., "San Francisco Cal Apr 20" pmk, cover corner fault, ex Jessup, very fine strike .....Est. 400-500
- 368 **Noisy Carrier's** imprint and California Coat of Arms illus. on cover to N.H., partially clear "Forest City Cal" cds and ms "Paid 10" rate, additional ms "Paid 25 cts" at top, cover edge worn, fine usage . . . .Est. 100-150
- 369 **Sullivan, Via Nicaragua In Advance Of The Mails** ornamented oval hs on cover to Maine, "Supplied From J.W. Sullivans Newspaper Office, Next Door To The Post Office" oval bkst, pair 3c Dull Red (#11) tied by "New York Apr 26" pmk, ex Jessup, fine .....Est. 500-750
- 370 **Sullivan, Via Nicaragua In Advance Of The Mails** ornamented oval hs on cover to Conn., pair 3c Dull Red (#11) tied by "New York Sep 25" pmk, P.F. cert, ex Haas, fine .....Est. 300-400
- 371 **Sullivan, Via Nicaragua In Advance Of The Mails** faint oval hs on cover to Mass., 12c Black (#17) tied by "New York Jul 12" pmk, cover edge worn and edge soiled, fine double rate usage .....Est. 300-400
- 372 **Via Nicaragua In Advance Of The Mails** ornamented oval hs on cover "pr Steamer Pacific, Via Nicaragua" to Virginia, pair 3c Dull Red (#11) tied by "New York Oct 27" pmk, ex Polland, very fine Est. 500-750
- 373 **Via Nicaragua In Advance Of The Mails** ornamented oval hs, partially clear, on cover to New York, pair 3c Dull Red (#11) tied by grid cancels, cover no flap, aged .....Est. 150-200



- 374 **Via Nicaragua Ahead Of The Mails** red boxed hs on cover to Mass., **diagonal bisect** of 12c Black (#17a) tied by "New York Sep 9" pmk, ex Jessup, very fine .....Est. 2,000-2,500



366

Mrs. William Clark  
Wilbraham



NOISY CARRIERS  
No. 77 Long Wharf, San Francisco

Lucien B. Eaton  
Wm. & Co.

365

P. Stearns  
P. Stearns



369

Joseph H. Under  
Hayden



373

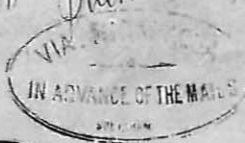
Sup. James I. Kullback  
24 Cornhill St.  
(next Shooker)  
New York



367

Mrs. Sarah Haskell  
Bitchburg  
Mass

370



Miss Julia A. Gallup  
Ledyard  
60 N  
New York  
left May 25  
1871



372

Mrs. P. Dudley  
Lynchburg



371

Miss Angelia Thayer  
Buckland-  
Mass.

375	<b>Via Nicaragua Ahead Of The Mails</b> red boxed hs on cover to Mich, pair 3c Dull Red (#11) tied by "New York Ship Jan 9" pmk, slightly aged, fine strike .....Est.	200-250
376	<b>Via Nicaragua Ahead Of The Mails</b> boxed handstamps, one in red and one in black on 1853 folded letter from San Francisco to New York, pair 3c Dull Red (#11) with "Steam Ship" cancel, fine .....Est.	400-500
377	<b>Via Nicaragua Ahead Of The Mails</b> blue boxed hs on cover to R.I., pair 3c Dull Red (#11) tied by "New York Ship Jul 25" pmk, minor edge toning, ex Emerson, fine .....Est.	400-500
378	<b>Via Nicaragua Ahead Of The Mails</b> red two line hs on 1854 folded letter from San Francisco to Boston, pair 3c Dull Red (#11) tied by "New York Feb 9" pmk, file folds, fine .....Est.	400-500
379	<b>Nicaragua Line In Advance Of The Mails</b> oval hs on cover to San Francisco, endorsed "Nicaragua route" at top and ms "Paid March 4," fine .....Est.	250-300
380	<b>Stm<sup>r</sup> Sierra Nevada, Via Nicaragua, Advance Of The Mails</b> , blue oval hs on cover to N.H., single 3c Dull Red (#11) tied by "New York Aug 7" pmk, ms "Due 4" smeared, ex Jessup, fine .....Est.	500-750
381	<b>Stm<sup>r</sup> Sierra Nevada, Via Nicaragua, Advance Of The Mails</b> , blue oval hs and blue "Via Nicaragua Ahead Of The Mails" boxed hs on 6c Green entire to N.Y., "New York Ship May 9" cds, cover edge stains, fine usage .....Est.	500-750

## CONTRACT MAIL ROUTES TO CALIFORNIA

*The United States Government tried several different routes to get mail safely to and from California. The ocean route via Panama was the first to receive a contract and continued to be the preferred route until the railroad was completed in 1869. Additional contract routes, mostly overland, were also established as needed. For mail to be carried on one of these routes the sender had to specify the route desired on the cover or it would be sent via Panama.*

382	<b>Via Tehuantepec</b> senders endorsement on cover to St. Louis, 10c Green (#35, faults) tied by "Sonora Cal Jan 10 1858" pmk, ms "8" at top right, cover soiled and slight edge wear, no flap, very fine usage ....Est.	750-1,000
383	<b>Via Panama</b> steamer illus. cover used to Michigan, 10c Green (#35) with black cancel, matching "Timbuctoo Cal Jul 30" pmk, cover small edge tear and light discoloration, fine design .....Est.	500-750
384	<b>Via Panama</b> steamer illus. cover used to Indiana, 10c Green (#35) tied by blue cancel, matching "Marysville Cal Paid By Stamps Jun 4" pmk, cover small corner repair, ex Haas, very fine design ....Est.	500-750

## THE BUTTERFIELD OVERLAND MAIL ROUTE

*In September, 1858 the first overland, through mail route under Government contact was opened. Connecting San Francisco and Los Angeles with St. Louis and Memphis, via a southern route, the mail was to be carried by the Overland Mail Company in 30 days. In early 1861 service was interrupted due to Indian troubles and Confederate forces in Texas. By July, 1861 the Overland Mail Company was fulfilling the mail contract over a northern route along the old California Trail. For a letter to be carried on the Butterfield Route the sender had to inscribe "Via Overland Mail" or the equivalent on the cover.*

385	<b>Overland Mail Via Los Angeles</b> fancy hs of Santa Clara on cover to Ill., 10c Green (#32) tied by "Santa Clara Cal" pmk, cover edge worn, believed to be the only recorded example, very fine strike .....Est.	400-500
-----	---	---------



376

VIA NICARAGUA

Mrs Mary A Stone  
New York  
New

Can be her H. Stone

VIA NICARAGUA  
AHEAD OF THE MAIL

375



Mrs A. Fitch

A. F. Fitch



380



Sweet

Mrs C. F. Hornig  
Care of Chas. J. Hornig



Via Tehuantepec

382

Chas. J. Hornig  
Care of Chas. J. Hornig



VIA PANAMA.

Published by RANDALL &amp; CO., SAN FRANCISCO.



Daniel Webster Esq  
Almont Paper Co  
Mich

383

377

Mrs. Mary A. Stone  
New York  
New



Nicaragua route

NICARAGUA LINE  
IN ADVANCE  
OF THE MAIL

379

VIA NICARAGUA  
AHEAD OF THE MAIL

381

James Miller

VIA NICARAGUA  
AHEAD OF THE MAIL

378



VIA PANAMA.



Published by RANDALL &amp; CO., SAN FRANCISCO.

384



Mrs. L. C. Brambleton  
Wm. C. C. C. C. C.  
Illinois

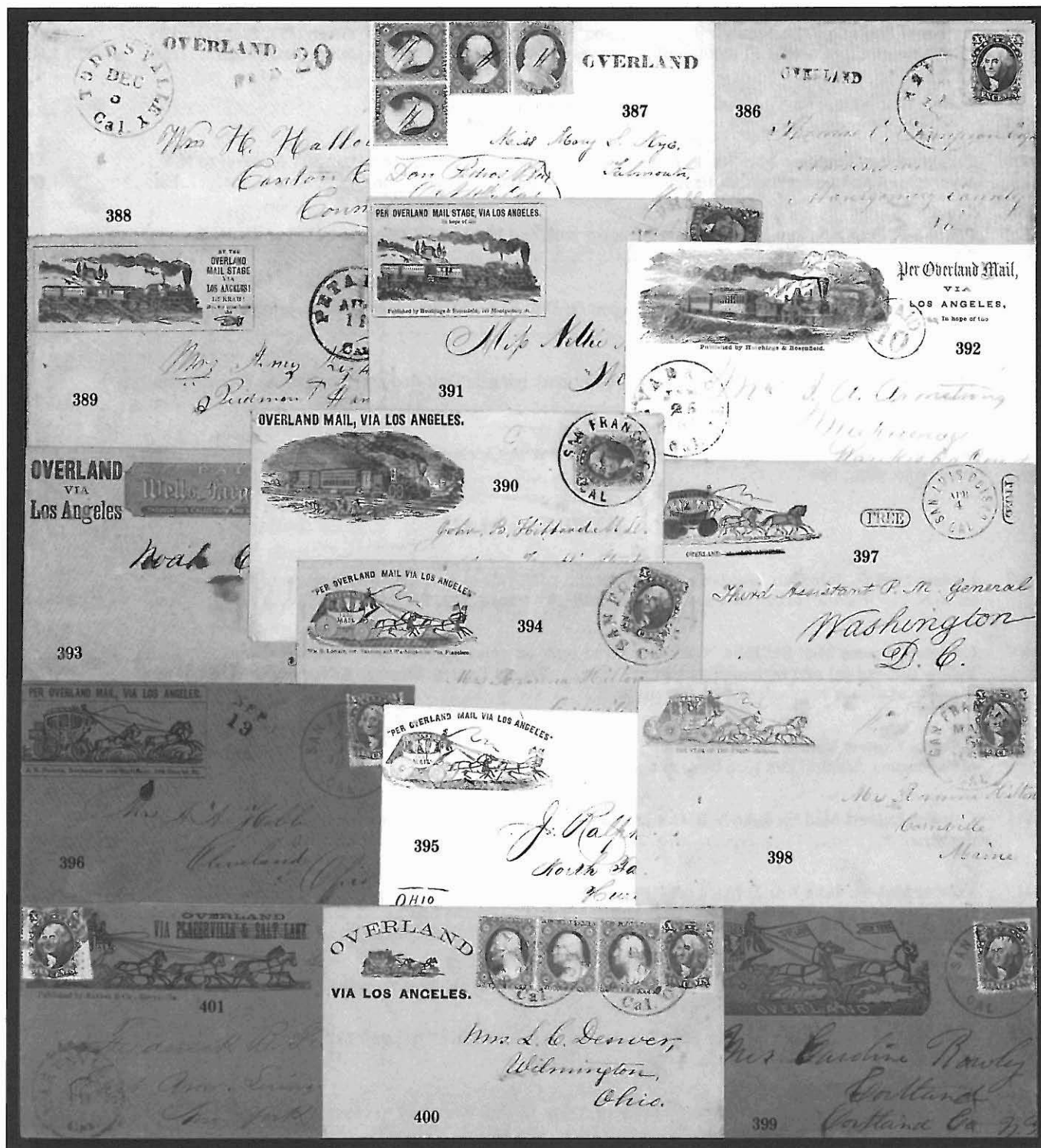
385

OVERLAND MAIL  
VIA LOS ANGELES



386	<b>Overland</b> hs of Nevada City on cover to Penna., 10c Green (#35, lifted and replaced) tied by indistinct "Nevada City Cal 1860" pmk, cover slightly soiled, fine strike .....Est.	250-300
387	<b>Overland</b> hs on cover to Mass., 1c Blue (#24, faulty) used with 3 copies 3c Dull Red (#26) with ms cancels, matching "Don Pedros Bar Cal Oct 4" pmk, ex Polland, very fine .....Est.	200-250
388	<b>Overland</b> hs on cover to Conn., "Todds Valley Cal Dec 3" cds, "Paid" hs and "20" rate hs, cover reduced at right and edge tears, fine usage .....Est.	150-200
389	<b>Overland Mail Stage Via Los Angeles, Hurrah!</b> , "But we must have the" train illustrated cover used to Virginia, 10c Green (#35) tied by blue "Petaluma Cal Aug 11" pmk, cover edge worn, soiled, very fine design .....Est.	1,250-1,500
390	<b>Overland Mail, Via Los Angeles</b> train illustrated cover used to New York, 10c Green (#35) tied by "San Francisco Cal Dec 1 1860" pmk, cover slightly soiled, small edge tear, fine .....Est.	1,000-1,250
391	<b>Per Overland Mail Stage, Via Los Angeles</b> , "In hope of the" train illus. cover used to Mass., 10c Green (#32, faulty) tied by "San Francisco Cal" pmk, cover wrinkle and repaired edge tear, fine design .....Est.	500-750
392	<b>Per Overland Mail Via Los Angeles</b> , "In hope of the" train illus. cover used to Wisconsin, "Nevada City Cal Jan 25" cds and "Paid 10" rate, cover has been cleaned and restored, fine design .....Est.	500-750
393	<b>Overland Via Los Angeles</b> red imprint on red Wells Fargo & Co. franked 10c Green entire to New York, "San Francisco Cal" partially clear pmk, cover minor edge faults at right, fine usage .....Est.	250-300
394	<b>Four Horse Stage</b> illustrated cover with Loomis imprint used to Maine, 10c Green (#35) tied by "San Francisco Cal" cds, ex Jessup, very fine .....Est.	750-1,000
395	<b>Four Horse Stage</b> illustrated cover used to Ohio, 10c Green (#35) tied by large part strike "San Francisco Cal Feb 27 1860" pmk, very fine .....Est.	750-1,000
396	<b>Four Horse Stage</b> illustrated cover, with "J.E. Damon" imprint, used to Cleveland, Ohio, 10c Green (#33) tied by "San Francisco Cal Aug 15 1859" pmk, "Sep 13" advertised hs of Cleveland, fine .....Est.	750-1,000
397	<b>Four Horse Stage</b> illustrated cover, hand colored, used to Washington, D.C., "San Luis Obispo Cal Apr 4" cds and boxed "Free" hs, very fine .....Est.	500-750
398	<b>Four Horse Stage</b> illustrated cover, in blue, with "The Star Of The Union" imprint used to Maine, 10c Green (#35) tied by "San Francisco Cal Mar 5 1859" pmk, cover light discoloration at top, ex Jessup, fine .....Est.	500-750
399	<b>Four Horse Stage</b> woodcut design illustrated cover used to N.Y., 10c Green (#33) tied by "San Francisco Cal" pmk, repaired cover tear runs beneath stamp, reduced at right, ex Polland, fine design .....Est.	500-750
400	<b>Four Horse Stage</b> illustrated cover, Denver corres. to Ohio, 10c Green (#35, faulty) tied with pair and single 3c Dull Red (#26) by "San Francisco Cal Feb 6 1860" pmks, P.F. cert, fine .....Est.	500-750
401	<b>Six Horse Stage</b> illustrated cover with "Overland Via Placerville & Salt Lake" and "Randal & Co" imprint used to New York, changed in ms to Via Los Angeles & St. Louis, 10c Green (#35, se) tied by blue cancel, matching "Marysville Cal Apr 19" pmk, ex West, very fine .....Est.	1,250-1,500





- 402 **Six Horse Stage** illustrated cover, "E.B. Davidson" imprint, used to N.Y., 10c Green (#35, faulty) tied by "Sacramento City Cal Mar 30 1860" pmk, cover reduced slightly at left, minor soiling, fine design . . . . Est. 750-1,000

## ROUTE AGENTS

- 403 **Panama & San Francisco May 7th** ms route agent pmk and "40" rate corrected to "80" on cover to N.Y., cover creases and corner stain, ex Jessup, very fine 1850 usage by Steamer Panama . . . . . Est. 750-1,000
- 404 **Pan & San Fran S.S.** Jun 29 magenta route agent pmk and black "10" rate hs on 1852 entire to Boston, fine . . . . . Est. 500-750
- 405 **PM Steamer Oregon** ms route agent pmk on pair 3c Dull Red (#11) on cover to N.Y., cover reduced and corners clipped, very fine usage . . . . . Est. 400-500
- 406 **Louisville & S' Louis S.B.** Apr 21 black route agent pmk tying 3c Dull Red (#11) to cover to Philadelphia, minor edge wrinkles, very fine strike . . . . . Est. 200-250
- 407 **St. L. & K. Steam** Sept 26 ms route agent pmk on cover to Cincinnati, 3c Dull Red (#11) pen tied, cover minor edge wear, fine . . . . . Est. 150-200

## EXPRESS MAIL

- 408 **Express Mail St. John** Jun 10 red cds, "Paid" hs and "10" rate hs over ms "6" (d) rate on 1853 folded letter to N.Y., "Pictou" origin bkst and "New Brunswick" transit bkst, file folds, fine . . . . . Est. 250-300
- 409 **Colonial Express Mail St. John N.B.** Dec 8 red pmk on cover to N.Y. with **New Brunswick** 6d Olive Yellow (#2, cut in) tied by matching "Paid" cancel, **Favors Express Steamer Admiral** Dec 1856 red cds bkst, cover slightly edge soiled, very fine usage . . . . . Est. 2,000-2,500
- 410 **Colonial Express Mail St. John N.B.** Dec 1 black cds and "10" rate hs on cover to Mass, red **Favors Express Steamer Admiral** Dec 1856 bkst, minor edge soiling, very fine . . . . . Est. 500-750
- 411 **Colonial Express Mail St. John N.B.** Oct 13 black cds and "10" due hs on cover to N.Y., cover edge wear, fine strike . . . . . Est. 150-200
- 412 **Express Mail St. John** Apr 21 black cds "Province of New Brunswick" hs and "10" rate on 1856 entire to N.Y., red, negative **Favors Express** bkst and "Admiral" straight line hs, ex Dale-Lichtenstein, minor discoloration, very fine usage . . . . . Est. 1,500-2,000
- 413 **Express Mail St. John** Aug 12 black cds and "10" rate hs on entire to Boston, very fine . . . . . Est. 150-200
- 414 **Express Mail St. John** Oct 29 black cds "Province of New Brunswick" hs and "10" rate on entire to N.Y., very fine . . . . . Est. 250-300
- 415 **Express Mail Eastport** cds, "Eastport" inverted, tying 3c Dull Red (#26) to cover to N.Y., original 1861 enclosure from Saint John, fine . . . . . Est. 200-250

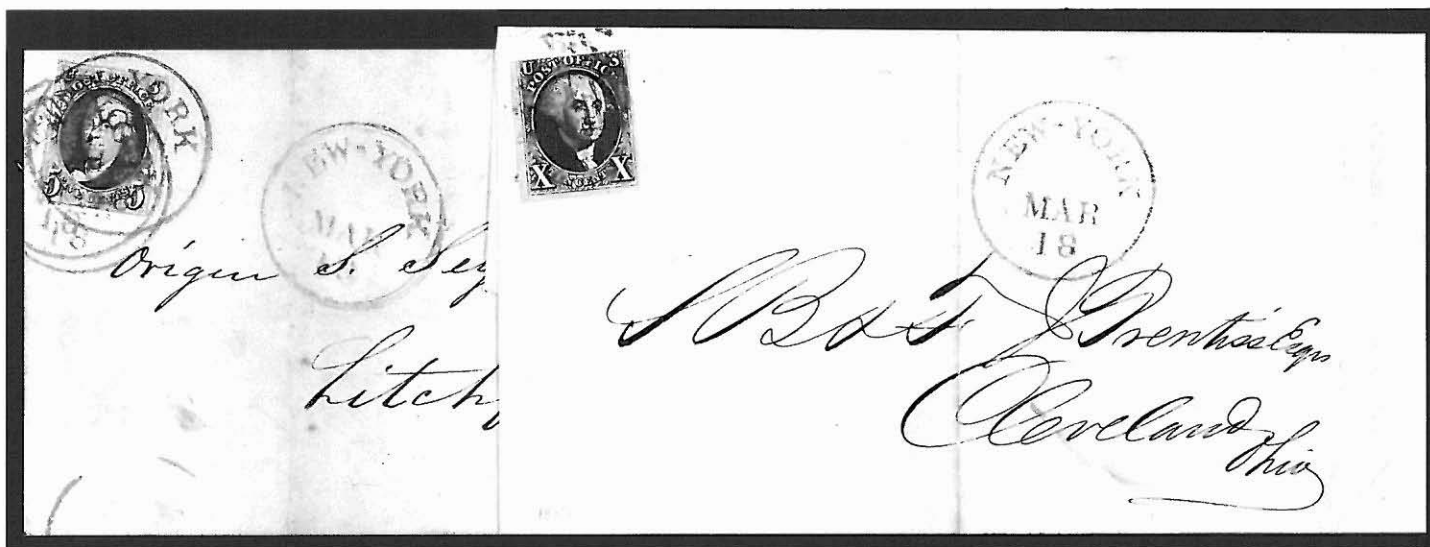


- 416 **Express Mail** May 26 red cds, with black "Eastport" at foot, on cover to Mass, 3c Dull Red (#11, faulty) with black grid cancel, 1854 docket, cover restored fold, very fine usage ..... Est. 200-250
- 417 **Express Mail Eastport** Dec 13 black cds and "5" rate hs on 1853 entire to Mass, fine ..... Est. 75-100

### ADHESIVES ON COVER

- 418 **#9X1, 5c New York Provisional**, horiz. pair, pos 31-32, left stamp cut in, red "Paid" cancels, on 1847 entire to Fayetteville, N.C., red "New York 10 cts Jan 1" cds, cover slightly worn, fine usage ..... Est. 300-400
- 419 **#3LB2, 1c Blue**, touched at left, tied by circle cancel to cover to Washington, 3c Orange Brown (#10) tied by thimble "Paid" cancel, red "Boston 3 cts Nov 25" cds, fine ..... Est. 150-200
- 420 **#6LB5, 3c Black on Bluish**, large margins, small sealed tear, tied to local use cover by red "US" hs, matching "U.S. City Despatch Post Jan 8" pmk, ex Emerson and Knapp, very fine ..... Est. 400-500

### 1847 ISSUE



- 421 **#1-2, 5c and 10c 1847 Issue**, pair of 1850 folded letters with matching "New York Mar 18" first type Ocean Mail pmks, both stamps cut in, 5c crease, 5c cover aged fold, there are 5 recorded examples of this pmk with 1847 issue stamps, this being a unique pair ..... Est. 2,000-2,500
- 422 **#1b, 5c Orange Brown**, complete to full margins except top right corner, faults, tied to September, 1851 folded letter to N.H. by black thimble "Paid" cancel and red "Boston 3 cts Sep 6" cds, usage after demonetization but accepted, small bleach spot, ex Blake, extremely fine usage ..... Est. 2,000-2,500



PAID



Mrs. S. W. Tallantree & Co.  
Fayetteville

418

417

5  
Capt. Bigelow B. & Kennard  
St. City } Assistant  
Boston



from Mrs. S. W. Tallantree & Co.  
Fayetteville N.C.  
May 20 1863



Mr. Charles H. Hudson  
Newburyport  
Mass.

416



Richard Burgess Esq.  
On F. Street, bet. 13th & 14th  
Washington City,  
D.C.



419

1/2 Box  
of Goods



John A. Burleigh Esq.  
Great Falls  
N.H.

422



E. Dugichinski Esq.  
20 Clinton Ave.

420



423	<b>#1b, 5c Orange Brown</b> , 3 margins, tied to entire to <b>France</b> , red "New York Apr 8" <b>first type Ocean Mail</b> pmk, red "Colonies & Art" boxed hs, black French entry cds and due hs, 1851 arrival bkst, very fine usage .....Est.	1,000-1,250
424	<b>#1, 5c Red Brown</b> , two folded letters with pen cancelled copies used from Burlington, Vermont, magenta cds 1848 usage, stamp full margins, filing crease through stamp, the other an 1848 usage with red cds, stamp a deep brown shade, cut in, fine .....Est.	300-400
425	<b>#1, 5c Red Brown</b> , complete to full margins, red grid cancel, on partially printed, 1851 circular to New York, red "Boston 5 cts Apr 12" pmk, file fold, very fine .....Est.	250-300
426	<b>#1, 5c Red Brown</b> , full margins, tied to brown cover to Maine by magenta grids, matching "Hartford Ct Sep 4" pmk, cover wrinkles affect adhesive slightly, fine .....Est.	200-250
427	<b>#1b, 5c Orange Brown</b> , full margins, tied to 1851 folded letter to Hartford by black grid cancel and red "Boston 5 cts Jun 12" cds, "Paid" hs to left, age stains .....Est.	200-250

### 1851 - 1857 ISSUES

428	<b>#5A, 1c Blue</b> , type Ib, horiz. pair, pos 5-6R1 <sup>c</sup> , cut in at foot cutting away type characteristics, tied to printed circular by blue "Apalachicola Fla" pmks, vertical crease through left stamp, (cat as stamps \$7,500) .....Est.	500-750
429	<b>#5A, 7, 1c Blue</b> , horiz. strip of three, pos 1-3R1 <sup>c</sup> , type II, type II and type Ib, full bottom and right side margins, cut in at top and left, tied to 1851 entire to Mass. by blue "Philadelphia Pa Nov 10" pmks, signed Ashbrook (cat. as stamps \$2,680) .....Est.	400-500
430	<b>#5A, 1c Blue</b> , type Ib, pos 4R1 <sup>c</sup> , cut in, tied with two copies type II (#7, pos 24L1 <sup>c</sup> , 67L1 <sup>c</sup> ) both cut in, to cover by "Utica N.Y. Dec 21" oval pmk, cover edge toned (#5A cat on cover \$5,750.) .....Est.	250-300
431	<b>#7, 1c Blue</b> , type II, vertical strip, pos 4-24L3, pos 24L3 cracked plate, mostly complete margins, private <b>sewing machine perforations</b> , tied to entire to Philadelphia by "New York" pmks, cover creases, one affecting top stamp, this cover discussed in Ashbrook on p 229, ex Worthington and Ashbrook, fine ....Est.	300-400
432	<b>#7, 1c Blue</b> , type II, plate 3, horiz strip of three, mostly large margins, left stamp small surface scrape, tied to 1857 folded letter to Napa City by "San Francisco Cal Jul 28 1857" pmks, ex Haas, fine .....Est.	300-400
433	<b>#7, 1c Blue</b> , type II horiz. strip, pos 64-66R1 <sup>c</sup> , center stamp showing shift as well as pre print paper crease, cut in at foot, tied to July 11, 1851 folded letter from N.Y. to Philadelphia by blue "1" in octagon cancels of Philadelphia, file folds, ex Gibson, Chase and West, illus. in Ashbrook (Vol. I, p. 116), signed Ashbrook .....Est.	250-300
434	<b>#7, 1c Blue</b> , type II, vertical strip, pos 74L2 - 94L2, mostly full margins, tied to cc cover by "Paid" cancels, red "Boston Mass Aug 15" cds, signed Ashbrook, very fine .....Est.	200-250
435	<b>#7, 1c Blue</b> , pair, cut in, used with 3c Dull Red (#11) on 1852 entire to <b>France</b> , blue "Paid" cancels, matching "Charleston S.C. 5 cts Oct 29" cds, red French entry cds and due hs, file fold, fine .....Est.	150-200
436	<b>#7, 1c Blue</b> , type II, horiz. strip, pos 88 - 90R3, left stamp double transfer, cut in, tied to 1857 entire to Boston by "New Orleans La Jul 5 1857" pmk, strip has been lifted, signed and plated by Ashbrook, and hinged back in place, ex Ishikawa, fine .....Est.	150-200

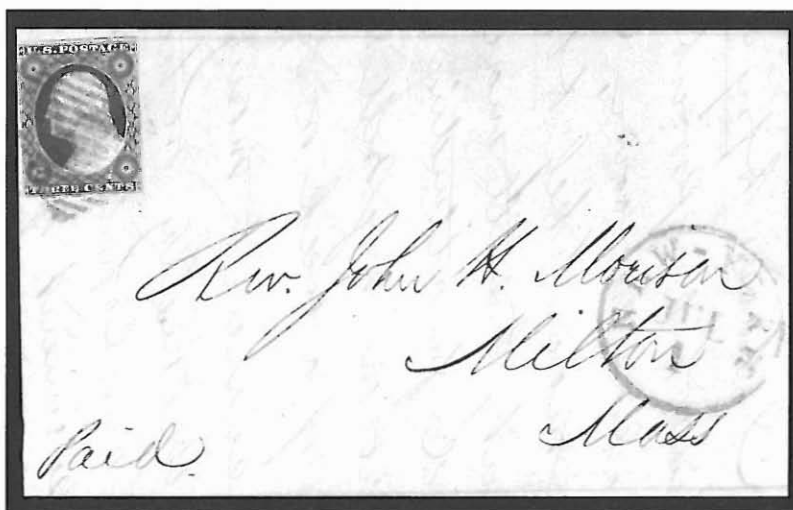




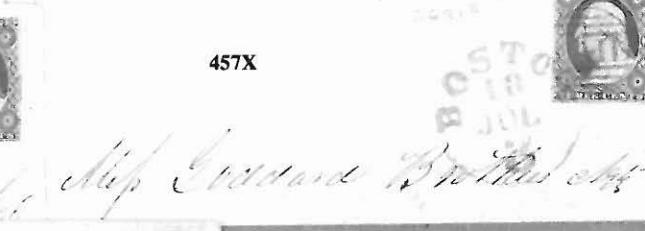
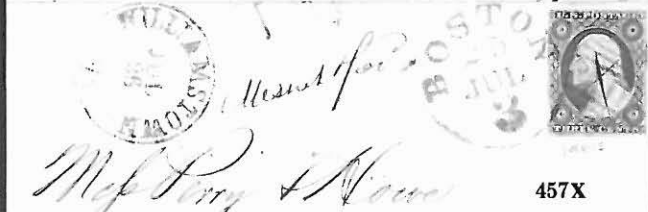
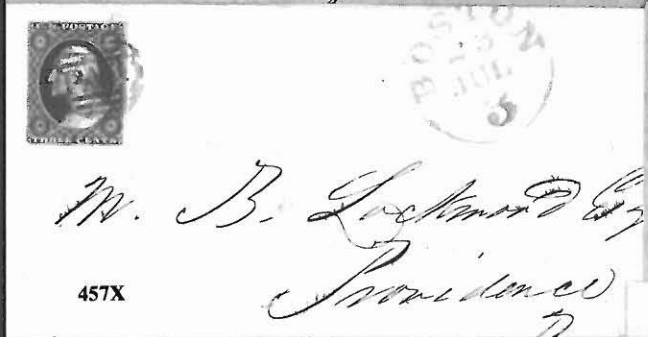
437	<b>#7, 1c Blue</b> , type II, horiz. pair, pos 87 - 88R1 <sup>c</sup> , right stamp pre-printing paper fold, full margins, tied to 1852 printed circular by "Detroit Mich Jun 23" pmks, very fine ..... Est.	150-200
438	<b>#7, 1c Blue</b> , cut in, tied with three copies 3c Orange Brown (#10) to 1851 folded letter to <b>Canada</b> by black thimble "Paid" cancels, red "Boston 10 cts Sep 19" cds, "U. States" exchange hs, 1851 Montreal arrival bkst, file fold, fine ..... Est.	150-200
439	<b>#7, 1c Blue</b> , type II, cut in, tied to embossed cover by fancy "Paid" cancel, red "Dedham Mass Apr 16" cds, fine ..... Est.	100-150
440	<b>#7, 1c Blue</b> , faulty, tied with 3c Dull Red (#11) to cover to Delaware by "Philadelphia Pa Oct 9" pmk, to the mails <b>carrier usage</b> , minor edge wear, fine ..... Est.	100-150
441	<b>#7, 1c Blue</b> , left margin copy, just touched at right, tied to local use <b>valentine</b> cover by blue "Perry N.Y. Feb 17" pmk, original 1852 enclosure, cover minor soiling, fine ..... Est.	100-150
442	<b>#7, 1c Blue</b> , type II, pair and single, mostly large margins, tied to cover to N.Y. by "Paid" cancels and red "Boston" cds, fine ..... Est.	100-150
443	<b>#7, 1c Blue</b> , type II, plate 3, large margins incl. part sheet margin at top, tied to local use cover by red "New York City Delivery" pmk, signed Ashbrook, cover wrinkles, very fine ..... Est.	100-150
444	<b>#7, 1c Blue</b> , type II, horiz. strip of three, large margins except cut in slightly at left, tied to cover by red "Boston" pmks, minor cover edge wear, fine ..... Est.	100-150
445	<b>#7, 1c Blue</b> , type II, pair and single, pos 8 - 18L1 <sup>c</sup> , 27L1 <sup>c</sup> , mostly full margins, tied to cover by "New York Sep 29" pmks, fine ..... Est.	100-150
446	<b>#7, 1c Blue</b> , plate 1 <sup>c</sup> , three singles tied to cover by partially clear "Pittsburgh Pa" pmk, fine ..... Est.	100-150
447	<b>#7, 1c Blue</b> , type II, pos 22R1 <sup>c</sup> showing <b>double transfer</b> , 3 margins, tied to 1851 printed circular by blue "Philadelphia Pa 1 Paid Nov 21" cds, file fold, fine ..... Est.	75-100
448	<b>#7-8A, 1c Blue</b> , horiz. strip of three, pos 98-100R1 <sup>c</sup> , misplaced reliefs, pos 98-99 are type II, pos 100 is type IIIA, cut in, with red grid cancels on 1851 folded letter to N.Y., red "Paid" hs and "Boston 3 cts Jul 3" red cds, <b>third day of issue</b> , vertical fold affects left stamp, signed Ashbrook, very fine usage ..... Est.	750-1,000
449	<b>#7-8A, 1c Blue</b> , horiz. strip of three, pos 38-40R1 <sup>c</sup> , left stamp type IIIA, right pair type II, right pair slightly cut in, tied to cover by "Columbus O. Dec 25" Christmas day pmks, fine ..... Est.	250-300
450	<b>#7-8A, 1c Blue</b> , horiz. pair, plate 1 <sup>c</sup> , type II and IIIA, cut in, tied to printed circular of patent attorney by partially clear "Cleveland O." pmk, fine ..... Est.	200-250
451	<b>#8, 1c Blue</b> , type III, pos 99R2, complete margins, minor faults, the right hand stamp in a horiz. strip, pos 97-99R2, uncanceled on defective cover to Santa Clara, Cal, age stain slightly affects stamp (cat \$3,250. as used single) ..... Est.	250-300
452	<b>#8A, 1c Blue</b> , type IIIA, cut in at right, tied to 1852 printed circular by "New York" pmk with six slugs in center, signed Ashbrook, fine ..... Est.	150-200



- 453 **#9, 1c Blue**, horiz. strip of three, cut in, tied to cover by **negative star** cancels, matching "Canton Mi Dec 30" pmk, illustrated in Ashbrook, fine ..... Est. 200-250
- 454 **#9, 1c Blue** tied with strip of three 3c Dull Red (#11) to 10c Green entire to Mass by "San Francisco Cal Mar 20" pmks, small edge tear, fine ..... Est. 150-200
- 455 **#9, 1c Blue** tied with pair and single 3c Dull Red (#11) to 1857 folded letter to **Canada** by "Philadelphia Pa" pmks, red "U. States Paid 6<sup>d</sup>" exchange, arrival bkst, slightly edge soiled, fine ..... Est. 100-150
- 456 **#9, 1c Blue** tied to cover to N.H. by "Paid" cancel, red "Boston Mass Feb 26" cds, their "Held For Postage" hs and 3c Dull Red (#26) tied by boxed "Paid" hs, opened roughly at right, fine usage ..... Est. 100-150
- 457 **#10, 3c Orange Brown** accumulation of 310 covers or folded letters, numerous July date usages, many selected for plating purposes with nearly complete or full margins, cancels incl. thimble "Paid" of Boston (several), Express Mail, etc., fine to very fine ..... Est. 3,000-4,000
- 458 **#10, 3c Orange Brown**, the largely mounted reference collection of 75 folded letters or covers used from Boston, Mass in July, 1851, incl. 27 diff July dates less only 1, 2, 6, 27 dates for completion, numerous magenta or red thimble "Paid" cancels and various diff forms of cancels used on same date, some faults, very fine study ..... Est. 1,500-2,000
- 459 **#10, 3c Orange Brown** the reference collection of 50 folded letters or covers and fronts used from New York City in July, 1851, incl. 27 diff July dates less only 1, 18, 23, 28 dates for completion, also incl. 7 additional folded letters with July dated "N. Y. Express Mail" pmks, condition varies, mainly fine to very fine, an exceptional group ..... Est. 1,250-1,500
- 460 **#10, 3c Orange Brown**, mounted study group of 13 folded letters and 10 stamps with New York "single slug" cancels in use between Aug 12 and Aug 26, 1851, also incl. 1c Blue (#7) on printed circular with "August 23" pmk, some faults, fine group ..... Est. 500-750



- 461 **#10, 3c Orange Brown**, pos 93L1<sup>c</sup>, full margins, tied to 1851 folded letter to Mass. by red grill cancel, matching "New York Jul 1" cds, **first day of issue**, signed Simpson, the finer of two recorded usages from New York, ex Grunin, very fine ..... Est. 10,000-12,500







- |     |   |             |
|-----|---|-------------|
| 462 | #10, 3c Orange Brown, pos 2L1 <sup>c</sup> , large margins, tied to 1851 entire to R.I. by black grid cancel, black "Paid" cancel, red "Boston 3 cts Jul 1" cds, <b>first day of issue</b> , fold at right away from adhesive, the finest example recorded from Boston . . . . . Est. | 5,000-7,500 |
| 463 | #10, 3c Orange Brown tied to 1851 folded letter by black and red grid cancels, red "Providence R.I. Jul 2" cds, <b>second day of use</b> , fine . . . . . Est.  | 250-300     |
| 464 | #10, 3c Orange Brown tied to cover by blue grid cancel, matching "Lowell Mass 3 cts Paid Jul 2" cds, <b>second day of use</b> , seal stain, fine . . . . . Est.   | 250-300     |
| 465 | #10, 3c Orange Brown tied to 1851 folded letter by blue grid cancels, "Philadelphia Pa Jul 2" cds, <b>second day of use</b> , fine . . . . . Est.   | 250-300     |
| 466 | #10, 3c Orange Brown, two copies tied to 1851 folded letter to San Francisco by grid cancels, "New York Jul 26" Ocean Mail pmk, the earliest reported example of this pmk on California inbound mail, edges heavily soiled, very fine usage . . . . . Est.                            | 250-300     |
| 467 | #10, 3c Orange Brown, watery blue "Paid" cancel, matching "E. Winthrop Me Nov 28" pmk on 1851 folded letter, very fine . . . . . Est.   | 150-200     |
| 468 | #10, 3c Orange Brown tied to cover by barred "Paid" cancel, red "Haverhill Mass Dec 10" cds, second cover with 3c Dull Red (#11) tied by barred "IDPA" cancel, black "Haverhill Mass" cds, fine pair . . . Est.   | 150-200     |
| 469 | #10, 3c Orange Brown, horiz. strip of four tied to cover to Ohio by large grid cancels, matching "San Francisco Cal Apr 5" cds, horiz crease affects 1 stamp, cover edges re-folded, minor soiling, very fine usage . . . . . Est.  | 100-150     |
| 470 | #10, 3c Orange Brown, two copies with black thimble "Paid" cancels on Bain's Eastern Telegraph imprint cover to California, red "Boston 6 cts Jan 8" cds, cover wrinkle, fine . . . . . Est.  | 100-150     |





Mr J. N. A. Sanford  
(Haw. Miss?)

464



C. L. Sullivan  
San Francisco  
Cal<sup>a</sup>

466

Recd July 1867



463

W. J. Waterman Esq  
New Orleans



Mrs. Paulina Lane  
Care of Levi Manning  
Akron  
Ohio

469



Mess. Bush & Lobdell  
Kilmington.  
Delaware.

465

EASTERN TELEGRAPH,  
No. 73 State Street.



Mr John W. Felt  
San Francisco

470

California



468X

Albert Wingate Esq  
(Clariston Springs)  
(C. B. Barlow)



468X



Wilmington  
Delaware

467

Wm. W. E. Simpson  
Newburyport  
Mass.

471	<b>#10, 3c Orange Brown</b> , full margins, tied to cover by watery blue "E. Winthrop Me Nov 6" cds, matching fancy "Paid" cancel, ex Eno, fine . . . . . Est.	100-150
472	<b>#10, 3c Orange Brown</b> with thimble "Paid" cancel on entire, partially clear "Farmington Me Dec 3" pmk, fine . . . . . Est.	75-100
473	<b>#11, 3c Dull Red</b> , accumulation of 600 covers or folded letters with 3c Dull Reds, a few orange browns, incl. good range of primarily New England usages, several colored cancels incl. brown of Shrewsbury, Mass., several corner or imprint covers, a couple fancy cancels incl. Chickopee, Mass star and a group of 6 covers to New Orleans with "N.O.U.S. City Post" circular ds (faulty), condition varies . . . . . Est.	1,000-1,250
474	<b>#11, 3c Dull Red</b> tied to train and steamer illustrated "Cheap Inland and Ocean Postage" propaganda cover by "New York Aug 2" pmk, ex Simpson where it is illustrated, minor edge wear, very fine . . . . Est.	1,250-1,500
475	<b>#11, 3c Dull Red</b> , block of four, pos 9-20 R5 <sup>1</sup> , complete margins except at top right, tied to Denver corres. cover by "San Francisco Cal Feb 20" pmk, ex Simpson, very fine double rate usage . . . . . Est.	500-750
476	<b>#11, 3c Dull Red</b> , group of 10 folded letters or covers with diff New York year dated pmks of July, 1853, incl. July 11 to July 25 less only 12, 17, 18, 20, 23 dates, some minor faults, mostly fine to very fine . . . Est.	500-750
477	<b>#11, 3c Dull Red</b> , top margin block of four, cut in, tied to cover to Penna. by "New York Ship" pmks, cover edge wear, very fine usage . . . . . Est.	400-500
478	<b>#11, 3c Dull Red</b> tied to 1856 folded letter by grid of dots cancel and red "Boston Mass Dec 12" cds, file fold, one of two reported examples, both with the same date, very fine . . . . . Est.	150-200
479	<b>#11, 3c Dull Red</b> tied to cover by fancy, blue "Paid" cancel, matching "Bucksport Me Feb 18" cds, fine . . . . . Est.	150-200
480	<b>#11, 3c Dull Red</b> with barred "Paid" cancel in red, matching "North Cohasset Mass Jul 12" pmk, cover slightly aged, fine . . . . . Est.	150-200
481	<b>#11, 3c Dull Red</b> tied to cover by negative "CST" initials fancy cancel, "Canton Ms Jul 29" cds, 1854 letter, fine . . . . . Est.	100-150
482	<b>#11, 3c Dull Red</b> vertical pair tied to 1854 folded letter by "New York May 20" Ocean Mail pmk, forwarded to Mormon Island with "Sacramento City Cal Jun 26" cds and "5" due hs, minor edge soiling, very fine usage . . . . . Est.	100-150
483	<b>#11, 3c Dull Red</b> tied to cover to Sutton, N.H. by fancy "Paid" cancel, matching "Bradford N.H. Nov 2" cds, ms "Way 1" which is a stage coach way usage, cover wrinkles, fine . . . . . Est.	100-150
484	<b>#11, 3c Dull Red</b> cover and folded letter with negative, blue "Paid" cancels, one reversed, both with "Norwich Ct" pmk, file folds, fine . . . . . Est.	100-150
485	<b>#11, 3c Dull Red</b> tied to cover by "Shabbona Grove Ill Nov 15" scroll ds, cover minor edge soiling . . . Est.	100-150
486	<b>#11, 3c Dull Red</b> tied to cover by fancy "Paid" cancel, "Ashburnham Mass Jul 21" cds, minor soiling, fine . . . . . Est.	75-100



487	#11, 3c Dull Red tied to cover by fancy "West Hartford Ct Oct 23" boxed ds, 1856 letter, very fine . . . Est.	75-100
488	#11, 3c Dull Red with blue, barred "Paid" cancel on entire, matching "Yantic Ct" pmk, fine . . . . . Est.	75-100
489	#11, 3c Dull Red, corner copy, pos 1R3, on embossed cover with ms "Rural Hill N.Y. May 30" cancel, reduced slightly, minor toning . . . . . Est.	75-100
490	#12/30A, 5c Brown, 11 folded letters and 2 fronts with 25 various 5c stamps, incl. one imperf in combination with 10c perforated on legal size cover, perforated usages incl. to France (9, various shades), pair to California, mixed color franking to California and front only from British Columbia, via San Francisco, to Canada West, faults . . . . . Est.	1,250-1,500
491	#12, 5c Brown, full even margins, tied to 1856 folded letter to France by "New Orleans La Aug 31" pmk, red "New York Br. Pkt" cds, black French entry cds and "13" (d) due hs, fine . . . . . Est.	1,000-1,250
492	#13/15, 10c Green, balance of 33 covers or folded letters with 10c Green imperfs, incl. a type I, mostly to or from California but incl. used to Cuba and Canada, faults, a few 4 margin copies . . . . . Est.	1,000-1,250
493	#13, 10c Green, type I, full margins, tied to cover to San Francisco by red "Providence R.I." pmk, fine . . . . . Est.	200-250
494	#13, 10c Green, type I, complete margins, marginal crease at top right, tied to cover to San Francisco by ms "Bradford Ill. Dec 20" pmk, cover reduced roughly at right, fine stamp . . . . . Est.	100-150
495	#14, 10c Green, type II, tied to folded letter to Cuba by "Portland Me Paid Apr 16" pmk, red "New York Apr 17 1856" transit, blue "NA 1" handstamps, arrival bkst, fine . . . . . Est.	200-250
496	#14, 10c Green, type II, large margins except just touched at right, tied to 10c Green entire to Mass by "San Francisco Cal Nov 5" pmk, good 1855 letter about journey, cover crease and discoloration spot . . . . . Est.	100-150
497	#15, 10c Green, type II, full margins, light crease, tied to cover to San Francisco by "New York Feb 6" Ocean Mail pmk, cover edge nicks at top, fine usage . . . . . Est.	200-250
498	#17/36, 12c Black, balance of 21 covers or folded letters bearing a total of 12 imperfs and 18 perforated 12c Blacks, imperf usages incl. 3 single frankings, one a double 6c rate from California, one in combination with 1c Blue and strip of three 3c Dull Red from California to Washington, perforated usages incl. 2 single frankings, a usage to Germany, 2 to France and pairs to England, faults . . . . . Est.	1,000-1,250
499	#17, 12c Black, three margins, tied to 1852 folded letter to San Francisco by "New-York Dec 20" intermediate type Ocean Mail pmk, creases, ex Eno, fine usage . . . . . Est.	300-400
500	#17, 12c Black, horiz. pair, full even margins, tied to 1857 entire to England by "Cumberland Md" pmk, red "19" credit hs and red London Paid arrival, soiled file fold, fine . . . . . Est.	250-300
501	#17, 12c Black, faults, tied with 2 copies 3c Dull Red (#11) to triple rate cover to Cal. by "New York Nov 6" Ocean Mail pmks, no flap, cover soiled, P.F. cert, fine usage . . . . . Est.	250-300





502	<b>#19, 1c Blue</b> , type 1a, pos 98R4, blunt perfs at foot, tied to cover by “Boston Mar 9” cds, P.F. cert, fine (cat \$3,250.) ..... Est.	300-400
503	<b>#20, 1c Blue</b> , type II, pos 58-60R12, horiz. strip showing part imprint and “No 12” tied to patriotic cover by “Springfield Ill. May 3 1861” pmks and edge soiled, fine strip ..... Est.	300-400
504	<b>#20, 1c Blue</b> , type II, horiz. strip, pos 7-9L2, tied to cover to Iowa by “New York Sep 4” pmks, no flap, slightly soiled ..... Est.	100-150
505	<b>#22, 1c Blue</b> , type IIIA, plate 4, horiz. pair tied with four copies 10c Green (#32, faults) and single 3c Dull Red (#26) to cover to <b>Florence, Italy</b> by “New Albany Ind. Jan 17 1859” pmks, overpay of 42c rate via P.C.M., red “New York Am Pkt Jan 21” bkst, “12” credit hs, “Aachen Franco” in red, arrival bkst and magenta ms credit, very fine ..... Est.	1,000-1,250
506	<b>#22, 1c Blue</b> , type IIIA, pos 53L4, tied to cover by “Keene N.H. Paid” pmk, original 1857 printed circular, very fine ..... Est.	200-250
507	<b>#23, 1c Blue</b> , type IV, rather well centered strip of 3 tied to cover by “New York Jan 26” pmks, part flap, very fine ..... Est.	400-500
508	<b>#24, 1c Blue</b> tied to local use cover by “San Francisco Cal Jul 5 1861” pmk, fine ..... Est.	75-100
509	<b>#26, 3c Dull Red</b> , three copies used from <b>British Columbia</b> to N.Y., each with ms cancel, British Columbia 2½d Rose with matching cancel, 3c stamps tied by “San Francisco Cal Apr 5 1860” pmks, original letter dated from Trafalgar Flatt, cover corner fault, no flap, very fine usage ..... Est.	500-750
510	<b>#26, 3c Dull Red</b> the big <b>plate crack</b> variety, tied to cover to New Haven, Conn., cover minor edge soiling, ex Wunderlich, fine ..... Est.	200-250
511	<b>#26, 3c Dull Red</b> tied to 1859 folded letter from <b>Haiti</b> to New York by “Ship” hs, matching “2” due hs and “Boston Mass June 16” pmk, very fine ..... Est.	150-200
512	<b>#26, 3c Dull Red</b> with negative and reversed “Paid” cancel on cover, matching “East Sanbornton N.H. Apr 13” cds, docket at left, fine ..... Est.	150-200
513	<b>#26, 3c Dull Red</b> tied to green, American House illustrated, embossed cc cover by “Paid” cancel, red “Boston Ms” pmk, small cover edge tear, fine ..... Est.	100-150
514	<b>#26, 3c Dull Red</b> tied to cover by red “Paid” grid cancel, matching “Jamaica Vt May 13” cds, cover reduced slightly, fine ..... Est.	75-100
515	<b>#26, 3c Dull Red</b> tied to cover to Mich by dateless “N.York Steamship” pmks, cover reduced slightly at right, fine usage ..... Est.	75-100
516	<b>#26, 3c Dull Red</b> tied by grill cancel to entire to Detroit, their “Steamboat” hs and “Detroit Mich 3 Paid Oct 2 1860” pmk, very fine ..... Est.	75-100



517	<b>#27, 5c Brick Red</b> , vertical strip of three, center stamp <b>plate flaw</b> , tied to folded entire <b>to France</b> by light "New Orleans La Oct 27 1858" pmks, red "New York Paid 12" credit cds, 1858 French entry pmk, pressed crease affects bottom stamp, fine usage. .... Est.	500-750
518	<b>#27, 5c Brick Red</b> , vertical strip of three, partially trimmed perfs at right affecting lower pair, tied to folded letter <b>to France</b> by "New Orleans La Apr 28 1859" pmks, red "New York Paid 3" credit cds, blue French entry cds, 1859 arrival bkst, very fine .... Est.	500-750
519	<b>#27, 5c Brick Red</b> , vertical strip of three, scissors cut at right and top, tied to folded letter <b>to France</b> by "New Orleans Jun 26 1859" pmks, red "New York Paid 3" credit cds, blue French entry cds and 1859 arrival bkst, fine .... Est.	400-500
520	<b>#28, 5c Red Brown</b> tied with strip of three 10c Green (#35) to cover <b>to Switzerland</b> by "San Francisco Cal Oct 5 1860" pmks, matching <b>Overland</b> hs at top, black "New York Am Pkt Nov 3" bkst, red "Aachen Franco" hs, "12" credit and arrival bkst, very fine .... Est.	2,000-2,500
521	<b>#28b, 5c Bright Red Brown</b> , well centered vertical pair, perfs clear, bottom stamp <b>plate flaw</b> , rich color, tied to cover <b>to Canada</b> by blue "Petersburg Va 3 Cts Nov 2" pmk, red "United States Paid 6d" exchange hs, 1859 arrival bkst, cover minor edge wear, very fine .... Est.	750-1,000
522	<b>#29, 5c Brown</b> , bottom margin vertical pair tied to cover "By Overland Mail Route" to San Francisco by "Atlanta Ga Jan 1861" pmks, usage shortly before secession, cover edge faults, fine usage .... Est.	200-250
523	<b>#29, 5c Brown</b> tied with 10c Green (#35) to cover <b>to France</b> by "Donaldsonville La Aug 11" pmk, red "New York Paid 3" credit cds, 1860 French entry cds, cover wrinkles and minor edge faults, ex Gibson Est.	200-250
524	<b>#29, 5c Brown</b> , vertical strip of three tied to Judicial cover to Lafourche, La by indistinct "New Orleans La" pmks, 1859 docket, cover reduced and refolded, fine domestic usage .... Est.	200-250
525	<b>#30A, 5c Yellowish Brown</b> , corner fault, tied to folded letter <b>to Calcutta, India</b> by "Paid" cancel of Boston, black "Boston Br Pkt" bkst, boxed "Calcutta Steam Letter 1861 Apl 11" bkst, ms due, very fine .... Est.	750-1,000
526	<b>#30A, 5c Brown</b> , type II, pair and single, se, tied by grid cancels to cover <b>to Germany</b> , red "N.York Brem Pkt 12 Paid Aug 4 1860" credit cds, blue "America über Bremen Franco" hs, cover small repaired tear at top, fine .... Est.	250-300
527	<b>#31/33, 10c Green</b> , balance of 59 covers or folded letters bearing 10c Green perforated, incl. several type I, II or III's, although mostly to or from California the lot incl. 10c + 1c to Nova Scotia, used to Cuba (2), Patriotic, 10c + 5c to France and 2 on stage coach illus. overland mail covers, condition varies, faults .... Est.	1,500-2,000
528	<b>#31, 10c Green</b> , type I, horiz. strip of 3, pos 95-97R1, used on cover with 3c Dull Red (#26, faults) <b>to Australia</b> , deep red grid cancels, matching "Cleveland O. Paid Oct 30" pmk, 1858 London Paid transit, ms "28" credit, arrival bkst, cover soiled and edge worn .... Est.	500-750
529	<b>#33, 10c Green</b> tied to cover to N.Y. by "San Francisco Cal Mar 14 1859" pmk, reverse with illus. ad for E. Crowell & Co." very fine .... Est.	100-150



530	<b>#35, 10c Green</b> , type V, tied to entire <b>from Cuba to New Foundland</b> by “New York Ja 22” duplex pmk, greenish “Sama, Sotolong y ca, Habana” hs, blue “J.M. Ceballos New York” two line hs, black “Boston Br Pkt” bkst and 1857 arrival bkst, blue crayon “4” due, fine .....Est.	300-400
531	<b>#35, 10c Green</b> tied to cover <b>to Cuba</b> by “New York Oct 22” Ocean Mail pmks, inverted date, oval “NA1” hs, 1860 arrival bkst, cover edges restored, very fine usage .....Est.	300-400
532	<b>#36, 12c Black</b> tied with 3c Dull Red (#26, faults) to folded letter <b>to Trieste</b> by partially clear “Mobile Ala Jan 20” pmks, black “New York 3” debit cds, boxed “Short Paid” hs, 1858 French transits, arrival bkst, fine .....Est.	250-300
533	<b>#36, 12c Black</b> , pair and two singles, faults, with red <b>Supplementary Mail</b> boxed cancels on cover <b>to England</b> endorsed “pr Arabia paid 24 cts” at bottom, red “19” credit hs, “London Mr 13 60” arrival bkst, cover edge tears at top and edge worn, ex Baker, very fine usage .....Est.	250-300
534	<b>#36, 12c Black</b> , strip of three and single with ms cancels, faults, on cover <b>to England</b> , red “Portland Me Am Pkt 6 Dec 3 1859” exchange cds, red London arrival, <b>forwarded</b> to France with “Baring Brothers” cachet on reverse, red “Paid” cds and ms rate, cover edge tear at top, slightly edge soiled .....Est.	250-300
535	<b>#37, 24c Gray</b> , faulty, tied with 5c Brown (#30A, faulty) to cover <b>to England</b> by “San Francisco Cal Aug 15 1861” pmk, red “19” credit, arrival cds, West Coast rate, signed Ashbrook, fine usage .....Est.	250-300
536	<b>#38, 30c Orange</b> tied with 12c Black (#36) to tissue paper cover <b>to Gibraltar</b> by red “Philadelphia Paid Jan 7 1860” pmk, blue “8R” hs, French transit, arrival cds, ink erosion at top right and old scotch tape repair, no flap, ex Gibson, extremely fine usage .....Est.	1,500-2,000

#### 1861 - 1930 ISSUES

537	<b>#65, 3c Rose</b> pair, faults, tied to wrapper <b>to Germany</b> by “New York” pmk, red “Paid All” hs, bkst, minor soiling .....Est.	200-250
538	<b>#65, 3c Rose</b> , vertical pair, se, tied to all over design, green, Auction House illus. ad cover by large cog cancels, “San Francisco Cal” cds, fine .....Est.	100-150
539	<b>#68, 10c Green</b> tied to cover <b>from Hawaii</b> to R.I. by “San Francisco Cal Dec 24” duplex, red “Honolulu U.S. Postage Paid Dec 10” cds, red crayon “10,” orange <b>Hawaiian Steam Service</b> oval hs, original 1867 letter dated from Koloa, cover small edge tear, light aging, very fine usage .....Est.	1,500-2,000
540	<b>#68, 10c Green</b> , se, tied to cover to Baltimore by “San Francisco Cal Nov 20” duplex pmk, orange red <b>China And Japan Steam Service</b> hs, cover edge faults, fine usage .....Est.	500-750
541	<b>#68, 10c Green</b> , strip of four, faulty, tied with pair 3c Rose (#65, faulty) to cover <b>to Bergamo, Italy</b> by cog cancels, “San Francisco Cal Sep 22 1862” cds, red “N.York Hamb. Pkt. Paid Oct 18” credit cds and ms “36/2” credit for double 23c rate, black “Franco” hs, Hamburg 1862 transit bkst, arrival bkst, cover crease through stamps, flap faults, very fine usage .....Est.	400-500
542	<b>#71, 30c Orange</b> tied to folded letter <b>to France</b> by cog cancel, “San Francisco Cal May 10” cds, red “New York Paid 24” credit, red 1867 French entry cds, fine .....Est.	200-250

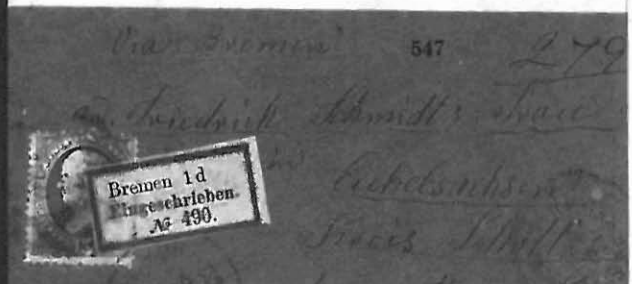




543	<b>#76, 5c Brown</b> tied with 24c Gray Lilac (#70) to folded letter <b>to England</b> by cog cancels, "San Francisco Cal Jun 23 1863" pmk, red New York credit cds and London Paid arrival, horiz. crease affects stamps, fine usage .....Est.	200-250
544	<b>#76, 5c Brown</b> tied with 30c Orange (#71, tear) to entire <b>to France</b> by cog cancels, matching "San Francisco Cal Apr 30" pmk, red "New York Paid 12" credit cds, 1866 French entry cds, arrival bkst, file fold, fine .....Est.	200-250
545	<b>#76, 5c Brown</b> tied to cover <b>from Hawaii</b> to Missouri by cog cancel, "San Francisco Cal Mar 12" cds, red "Honolulu U.S. Postage Paid Feb 17" cds, reduced slightly at left, minor foxing .....Est.	200-250
546	<b>#147/212, Bank Notes</b> , group of 16 covers with various Bank Note issues, all but 3 are to foreign destinations, incl. 10c Brown to Cuba, Brazil and Mexico (2), 6c to England with B.F. Stevens cachet, 7c to Germany and various 5c rates to China, Japan, etc., some faults, fine group .....Est.	300-400
547	<b>#163, 15c Yellow Orange</b> tied to <b>registered</b> cover <b>to Germany</b> by "New York Registered Apr 15" pmk, red Registry cds, "Bremen 1d Eingeschrieben" label, arrival bkst, cover reduced slightly at left, minor edge faults, fine usage .....Est.	100-150
548	<b>#239, 30c Columbian</b> tied to slightly oversized cover <b>to France</b> , "Bayshore N.Y. Aug 1894" pmk, with another cover from same corres. with 15c Columbian tied with 2c and 3c values by Brooklyn 1894 machine pmk, both minor edge faults .....Est.	200-250
549	<b>#C13-15, 65c - \$2.60 Zeppelins</b> , plate no. singles, each tied to flight cachet cover or card (65c), same corres., very fine .....Est.	400-500
550	<b>#U1/U18, Nesbitt Entires</b> , group of 73 entires, incl. 10c (5) and 6c (1), balance are 3c Reds, 52 with Nesbitt seal on reverse, variety of usages incl. R.R., territorial, 1 with "N.O.U.S. City Post" cds, to England, some colored cancels, primarily a study of the early envelope types incl. horiz. laid paper and horiz. watermark, some faults, very fine study .....Est.	500-750

## COLLECTIONS AND BALANCES

551	<b>Diverse Balance</b> of 400 covers or folded letters, mostly 1851-1857 incl. approx 300 covers with 3c perforated, others incl. several 1c imperf covers, pair 10c imperf (#15) used with #24 and #26 to England, various 10c California rates, pair #35 used to Hawaii, etc., also incl. a few 1861 issue usages and a group of C.S.A. covers, faults, please examine .....Est.	1,000-1,250
552	<b>N.Y.Ocean Mails</b> , balance of collection, 29 covers or folded letters with various types of N.Y. Ocean Mail cancels, primarily 3c imperf used to California but incl. several 10c perforated, a 10c + 1c combination, etc. better usages incl. with 2 diff types on same cover, faults, fine balance .....Est.	750-1,000
553	<b>Paid Cancels</b> , balance of collection, 40 covers or cards, 1851/1865 period, with various types of "Paid" cancels, mostly 3c Dull Reds but incl. Bucksport Me on 3c entire, some better incl. Jamaica, Vt in red, Yantic, Conn in blue, Norwich, Conn normal and reversed, etc., condition varies, faults, fine group ..Est.	500-750
554	<b>Stampless</b> , accumulation of 365 folded letters or covers, very diverse group, incl. several Steam or Steamboat usages, a few straight line pmks incl. Bradford, N.H., New York and Baltimore, a couple packet hs and a few local post usages, good variety of states present, mixed coindition .....Est.	500-750



555	<b>Trans Atlantics</b> , accumulation of 155 stampless covers or folded letters, incl. 50 outbound usages, largely contract rates, the balance of inbound usages incl. many ship rates as well as some contract rates, a few better incl. mail forwarder hs and early ship usages, mixed condition, fine group .....Est.	1,000-1,250
556	<b>U.S. Covers</b> , accumulation of a few hundred covers with stamps, many better, majority are Bank Note period but incl. 1861 issue usage to France with 2c Black, a few patriotics and fancy cancels incl. Corry eagle (defective), 1869 issue with Corry eagle (defective), 10c used from Shanghai and used to France, later material incl. many ad covers, etc., a few 20th Century incl. #C1 (2 copies) used from China, #C15 cover, #C18 covers (5), etc., faults, please examine .....Est.	2,000-2,500
557	<b>Western Covers</b> , group of 173 covers, good range of western states and territories, incl. New Mexico with Hyers (1910), Nevada, Dakota Territory, Indian Territory, Oregon, etc., a few scarcer towns, mixed condition, fine group .....Est.	500-750

## GREAT BRITAIN

### 1840 - 1841 ISSUE STAMPS

558	<b>Great Britain</b> , balance of collection, approx. 200 pieces, primarily 1841 issue, incl. 1d Red mint block of 4, used block of 6, set of numbers in cross cancels, 2d Blue incl. unused singles (4) and pair, used incl. strip of 4, also incl. some perforated line engraved and collateral incl. Queen Victoria signature, A.L.S. of Courbould and 1d Black tied to 1890 Penny Post Jubilee cover, a few covers incl. 4 Ocean Penny Post usages and 1 Universal Brotherhood, some faults, very fine balance .....Est.	750-1,000
559	<b>#1/2, 1840 Issue</b> , the important balance of collection, incl. 1d Black (127 copies) with 6 unused, faults, 16 covers or folded letters incl. turned cover with 2 copies, pair on cover, etc., off cover incl. several pairs and a strip, 2d Blue (9 copies) incl. a pair on cover, the majority of stamps in this collection are 4 margin copies, some faults, an exceptional study collection (cat. \$30,000. +) .....Est.	3,000-4,000
560	<b>#1, 1d Black</b> , plate 2, pos HH, unused, full margins, very fine (cat \$2,250.) .....Est.	300-400
561	<b>#1, 1d Black</b> , plate 1b, pos RB, unused, full margins, very fine (cat \$2,250.) .....Est.	300-400
562	<b>#1, 1d Black</b> , plate 3, pos IA, full margins incl. part inscription at left, unused, part o.g., vert crease at left, very fine appearance (cat. \$2,250.) .....Est.	250-300
563	<b>#1, 1d Black</b> , plate 4, pos BE, complete margins, unused, o.g., thin spot, fine appearance (cat. \$2,250.) .....Est.	200-250
564	<b>#1, 1d Black</b> , plate 11, pos LB, 3 margin copy with black maltese cross cancel, R.P.S. cert., about fine Est.	200-250
565	<b>#2, 2d Blue</b> , plate 2, pos TC, complete to full margins, unused, part o.g., fine (cat \$6,000.) .....Est.	500-750
566	<b>#4, 2d Blue</b> , pos SA, unused, o.g., full margins incl. sheet margin at left, vertical crease, slightly oxidized, very fine appearance (cat \$950.) .....Est.	150-200





"EXAMPLES FROM LOT #559"



## POSTAL HISTORY

- 567 **London Paid** Oc 31 1829 red oval pmk on address leaf addressed to **George Cruikshank**, the artist used the sheet for several original pen and ink and watercolour drawings, the watercolor sketch at the right is inscribed "Shutting public houses 3 o'clock. Dandy prophesying; sodawater; Pawn Shop" at left is a watercolour head study, on the reverse are 3 face studies, signed by Cruikshank probably at a later date, fold faults, very fine .....Est. 500-750
- 568 **#1, 1d Black**, plate 7, pos II, complete margins, tied to Spooner imprint **caricature** cover by black maltese cross cancel, red "Mr 4 41" bkst, cover trivial ink stain at top left, ex Liggers, very fine .....Est. 1,000-1,250



- 569 **#1, 1d Black**, full margins, tied by red maltese cross cancel to 1840 folded letter to **Massachusetts**, red "Cheltenham Oct 26 1840" origin bkst, Bristol transit cds, red "New York Ship Nov" pmk and ms "20¾" (18¾ + 2) ship rate, minor fold toning, early usage of an adhesive to the United States .....Est. 500-750
- 570 **#1, 1d Black**, 4 singles, 3 with full margins, tied to entire by black maltese cross cancels, red "T.P. Chingford" pmk, red "Sp 19 1840" bkst, fine .....Est. 250-300
- 571 **#1, 1d Black**, plate 1A, pos QD, cut in, tied to Southgate **caricature** by red maltese cross cancel, the reverse is largely missing with only "Rejected Design's For the Postage Envelope" panel remaining .....Est. 150-200
- 572 **#1, 1d Black**, plate 7, pos DG, full margins, tied by red maltese cross cancel to cover, red "Peterborough Penny Post" boxed hs, black N° 4" boxed hs, "Peterborough No 29 1840" red bkst, cover light tone spot at right, fine .....Est. 100-150
- 573 **#2, 2d Blue**, pos TF, complete margins, tied to large folded letter to London by red maltese cross cancel, "Bedford No 8 1840" bkst, ms "1" (d) due, cover stain and aged fold .....Est. 200-250



574	<b>#3, 1d Red</b> tied to all over reverse design Anti-Slavery propaganda cover, Valentine imprint, by barred cancel, greenish "Limerick Ja 23 1854" bkst, minor edge soiling, fine . . . . .Est.	300-400
575	<b>#3, 1d Red</b> , cut in, tied to "Ocean Penny Post" lithographed cover, Mitchell Lovells imprint, by barred "38" cancel, bluish "Suffield My 4 1853" pmk on flap, very fine . . . . .Est.	300-400
576	<b>#3, 1d Red</b> tied to Ocean Postage illustrated cover, Valentine imprint, red "Glasgow Au 12 1850" bkst., slightly soiled, fine . . . . .Est.	200-250
577	<b>#3, 1d Red</b> tied to Ocean Penny Postage illustrated cover with "Bradshaw & Blacklock" imprint, addressed in the hand of Elihu Burritt, 1851 bkst, cover stain at top, fine design . . . . .Est.	200-250
578	<b>#3, 1d Red</b> tied to Intemperance propaganda cover, Valentine imprint, by barred cancel, "Glasgow Jy 15 1850" bkst, long tear across top, fine design . . . . .Est.	150-200
579	<b>#20, 1d Red</b> tied to cover with hand painted figure by barred "N20" cancel "London Mr 21 64" bkst, fine . . . . .Est.	250-300
580	<b>#20, 1d Red</b> , faulty, tied to all over pen and ink drawing cover by "York Ja 5 1859" pmk, fine design .Est.	150-200
581	<b>#33, 1d Red</b> , pair of covers from same correspondence with pen and ink drawings framing the stamp, London 1875 pmks, edge soiling . . . . .Est.	250-300
582	<b>#33, 1d Red</b> , faulty used on cover with pen and ink drawing of cat, "London Jy 11 64" bkst, soiled . . .Est.	150-200
583	<b>#U1-2, Mulready</b> envelopes, the collection of 1d Black (8) and 2d Blue (1), better usages incl., 1d with 1d Black tied, with 1d Red tied and "8" in cross cancel, faults, fine collection . . . . .Est.	250-300
584	<b>Callao, Peru</b> "No 14 69" pmks tying <b>Great Britain</b> 6d Dull Violet and <b>Peru</b> 1d Green to Shaw corres. cover to Maine, red "Forwarded By B. Crosby & Co., Callao, Peru" <b>forwarders</b> hs, Panama transit cds, "N.Y. Steamship 10" cds, very fine . . . . .Est.	1,250-1,500

## CANADA

585	<b>#4, 3d Red</b> , 5 covers or folded letters, incl. 2 with pairs used to the U.S. and 3 with single frankings, 2 are four margin copies, fine group . . . . .Est.	500-750
-----	---	---------

## INDIA

586	<b>#16, 4a Black</b> , cut to shape, tied to cover to England with all over pen and ink drawing, red "India Paid" hs, transit bkst and "London Paid Oc 20 62" arrival cds, fine . . . . .Est.	250-300
-----	---	---------

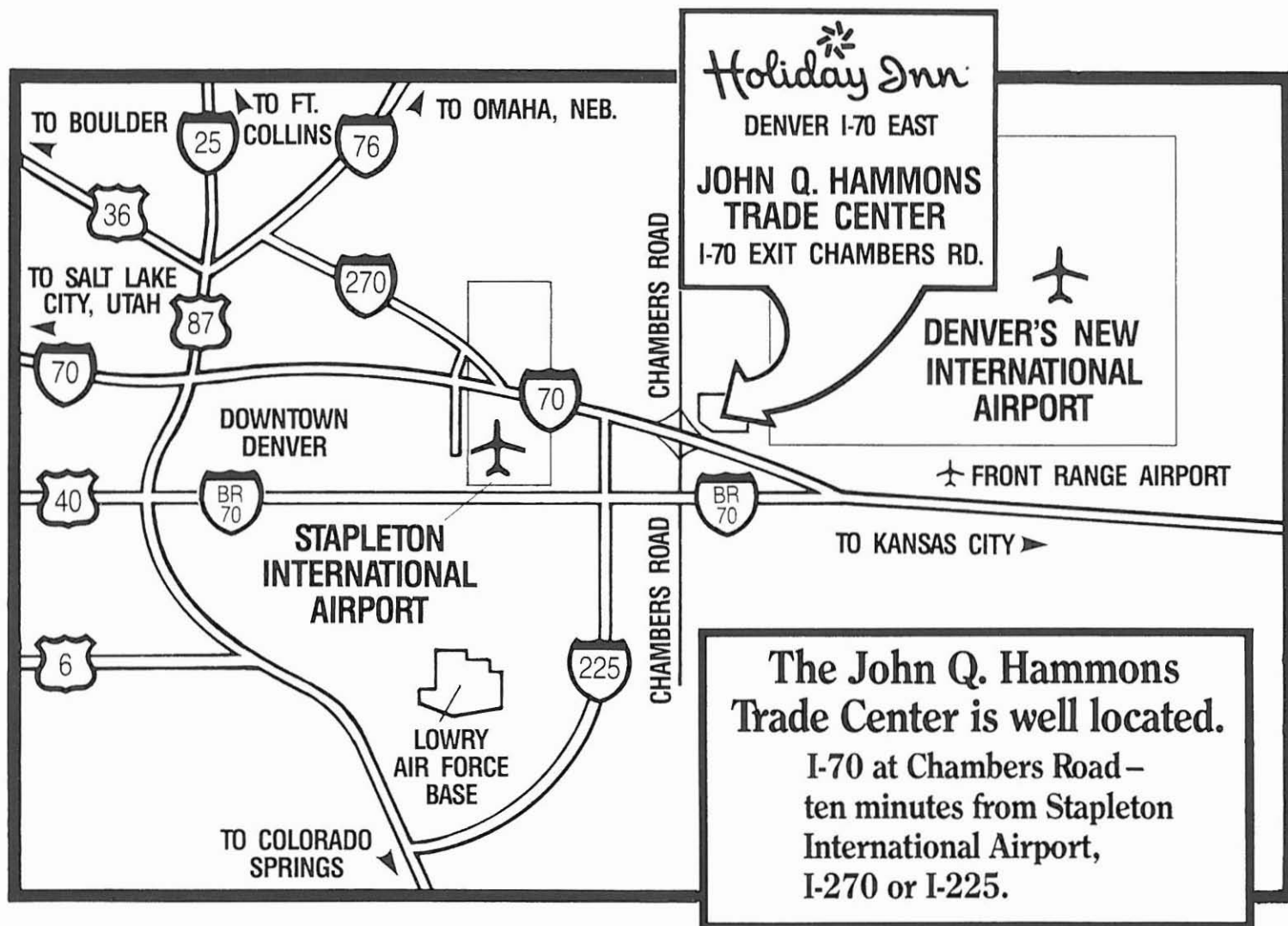


## CROSS REFERENCE INDEX

BRITISH NORTH AMERICA  
129, 278, 279, 289-296, 304,  
305, 345, 351, 353, 408-414,  
438, 455, 492, 509, 521, 527,  
530  
CUBA: 495, 530, 531  
MEXICO: 85-88, 130, 135  
TRANS-ATLANTIC: 97, 128,  
129, 139-142, 146-148, 152,  
153, 158, 159, 163, 165, 167-  
170, 174, 200, 252, 253, 255,  
257, 261, 299, 423, 435, 490,  
491, 498, 500, 505, 517-520,  
523, 525-528, 532-537, 539-  
544, 546-548  
ALABAMA: 532  
CALIFORNIA: 110, 230-234,  
240, 247, 254, 256, 265,  
267-277, 282-288, 297-303,  
306, 311, 313, 317, 318, 323,  
324, 326, 327, 329-344, 346-  
351, 353-355, 357-405, 432,  
454, 469, 475, 482, 492, 496,  
501, 508, 509, 520, 522, 527,  
529, 535, 538-545,  
COLORADO: 280, 281, 306-  
310, 314-316, 319  
CONNECTICUTT: 284, 426,  
484, 487, 488  
FLORIDA: 428  
GEORGIA: 522  
HAWAII: 128, 131, 250, 326,  
327, 338, 539, 545  
IDAHO: 265, 352  
ILLINOIS: 312, 485, 494, 503  
INDIANA: 505  
IOWA: 407  
KANSAS: 280, 281, 356  
KENTUCKY: 406  
LOUISIANA: 150, 320-322,  
436, 491, 517-519, 523, 524

MAINE: 289, 293, 329, 415-  
417, 467, 471, 472, 479, 495,  
534  
MARYLAND: 500  
MASSACHUSETTS: 178,  
289-296, 304, 305, 311, 325,  
326, 345, 419, 422, 425, 427,  
434, 438, 439, 442, 444, 448,  
456-458, 462, 464, 468, 470,  
478, 480, 481, 486, 502, 511,  
513, 525  
MICHIGAN: 437, 516  
MISSISSIPPI: 453  
MISSOURI: 126, 281, 307,  
309, 346, 406, 407  
NEBRASKA: 312  
NEVADA: 265, 339, 347-349  
NEW HAMPSHIRE: 483,  
506, 512  
NEW YORK: 278, 287, 301,  
328, 331, 351, 359-363, 369-  
378, 380, 381, 418, 420, 421,  
423, 430, 431, 441, 443, 445,  
452, 459-461, 466, 474, 477,  
482, 489, 497, 499, 501, 504,  
507, 515, 526, 530, 531, 533,  
537, 547, 548  
OHIO: 236, 308, 449, 450, 528  
OREGON: 283, 355  
PENNSYLVANIA: 310, 429,  
433, 440, 446, 447, 455, 465,  
536  
RHODE ISLAND: 463, 493  
SOUTH CAROLINA: 435  
TENNESSEE: 266  
TEXAS: 85-88, 322  
UTAH: 354  
VERMONT: 296, 424, 514  
VIRGINIA: 521





*We are now accepting consignments  
for our fiftieth public auction.*

*Please call or write if you are  
contemplating the sale of your  
collection.*

**RICHARD C. FRAJOLA, INC.**

P.O. Box 608  
125 W. Park Avenue  
Empire, CO 80438  
TEL (303) 569-3241  
FAX (303) 569-3244



**RICHARD C. FRAJOLA, INC.**

P.O. Box 608  
125 W. Park Avenue  
Empire, CO 80438  
TEL (303) 569-3241  
FAX (303) 569-3244

# UNITED STATES POSTAL HISTORY

**GEO. D. SUTTON'S CLIPPER LINE for SAN FRANCISCO.**  
**THE WORLD-RENOVED A 1 EXTREME CLIPPER**



**"ERICSSON"**

MATTHEWS, Master, at PIER 27, E. R., is completing her Cargo, and will be dispatched Suddenly.

The performances of this Wonderful Ship have been as UNIFORM and RAPID as to attract World Wide attention.  
 Her consecutive passages to Liverpool in 17 days, thence to San Francisco in 109 days, and back to Liverpool in 101 days, have NEVER  
 BEEN EQUALLED. The time employed in these RAPID passages was 8 months; the distance sailed equal to crossing the Atlantic 12 times.

We invite California Shippers to visit the ERICSSON, examine her SPACIOUS MOOR, and observe that her room is so equalized as to avoid  
 any possibility of damaging Cargo. P. S. - For Freight, at reasonable rates, apply to

Consignees in San Francisco, Mexico, MOORE & CO. **GEORGE D. SUTTON, 70 Wall St.**

PUBLIC AUCTION • MAY 16, 1992

RICHARD C. FRAJOLA, INC.

PRICES	REALISED	AUCTION	#49
--------	----------	---------	-----

SALE	TOTAL	\$511,938.
------	-------	------------



LOT	PRICE	LOT	PRICE	LOT	PRICE	LOT	PRICE	LOT	PRICE	LOT	PRICE	LOT	PRICE	LOT	PRICE	LOT	PRICE
1	7000	60	625	119	230	178	105	237	130	296	105	355	26	414	300	473	1700
2	2300	61	1800	120	42	179	110	238	170	297	34	356	500	415	135	474	2600
3	6000	62	500	121	350	180	425	239	55	298	50	357	230	416	425	475	400
4	1250	63	1100	122	130	181	22	240	450	299	160	358	240	417	160	476	210
5	325	64	1100	123	115	182	110	241	220	300	325	359	900	418	375	477	290
6	2300	65	1500	124	160	183	44	242	80	301	160	360	350	419	250	478	280
7	470	66	1900	125	1150	184	22	243	500	302	500	361	130	420	425	479	80
8	425	67	1650	126	1250	185	75	244	36	303	125	362	350	421	1650	480	500
9	50000	68	1800	127	1650	186	46	245	36	304	475	363	270	422	2100	481	70
10	1450	69	950	128	2100	187	180	246	140	305	475	364	425	423	2000	482	210
11	1500	70	1350	129	350	188	110	247	270	306	210	365	425	424	450	483	210
12	500	71	850	130	950	189	65	248	110	307	80	366	220	425	250	484	500
13	475	72	4250	131	3750	190	105	249	75	308	210	367	400	426	200	485	145
14	325	73	325	132	1000	191	32	250	350	309	105	368	375	427	220	486	270
15	350	74	425	133	625	192	20	251	210	310	190	369	190	428	4000	487	50
16	170	75	1300	134	950	193	55	252	240	311	850	370	450	429	650	488	325
17	500	76	600	135	900	194	22	253	100	312	500	371	260	430	1050	489	105
18	325	77	1450	136	1000	195	65	254	375	313	160	372	1350	431	1150	490	1900
19	525	78	1200	137	3250	196	180	255	160	314	270	373	85	432	425	491	1200
20	575	79	1000	138	350	197	42	256	220	315	450	374	4000	433	400	492	2000
21	26	80	800	139	160	198	135	257	105	316	475	375	170	434	400	493	300
22	8250	81	900	140	220	199	34	258	190	317	115	376	650	435	85	494	130
23	350	82	650	141	210	200	270	259	230	318	450	377	135	436	220	495	230
24	2000	83	425	142	300	201	170	260	600	319	4500	378	180	437	260	496	120
25	625	84	1900	143	135	202	160	261	1350	320	220	379	375	438	170	497	100
26	2200	85	130	144	220	203	300	262	1400	321	50	380	220	439	375	498	2800
27	750	86	260	145	375	204	80	263	160	322	50	381	500	440	130	499	75
28	650	87	120	146	210	205	75	264	200	323	22	382	725	441	22	500	270
29	525	88	105	147	105	206	160	265	2100	324	180	383	1350	442	120	501	170
30	600	89	8250	148	140	207	80	266	350	325	325	384	850	443	400	502	525
31	450	90	1450	149	140	208	32	267	22	326	65	385	1550	444	160	503	1850
32	575	91	550	150	290	209	32	268	290	327	625	386	140	445	22	504	200
33	400	92	325	151	200	210	65	269	300	328	220	387	725	446	75	505	625
34	525	93	425	152	32	211	80	270	80	329	325	388	240	447	110	506	130
35	525	94	475	153	150	212	38	271	1900	330	325	389	1600	448	500	507	850
36	240	95	475	154	270	213	22	272	130	331	210	390	850	449	325	508	22
37	19500	96	130	155	2300	214	22	273	250	332	950	391	325	450	325	509	280
38	450	97	120	156	110	215	42	274	350	333	750	392	725	451	1750	510	240
39	350	98	125	157	42	216	22	275	290	334	325	393	325	452	325	511	290
40	170	99	135	158	95	217	160	276	160	335	1000	394	800	453	230	512	525
41	525	100	90	159	70	218	22	277	170	336	145	395	650	454	220	513	85
42	525	101	525	160	90	219	40	278	300	337	115	396	525	455	200	514	200
43	3750	102	125	161	22	220	160	279	115	338	5000	397	1200	456	210	515	75
44	750	103	145	162	170	221	46	280	260	339	350	398	325	457	4750	516	130
45	240	104	200	163	375	222	200	281	900	340	75	399	425	458	2400	517	575
46	220	105	115	164	95	223	110	282	525	341	325	400	400	459	2800	518	650
47	230	106	65	165	40	224	110	283	210	342	280	401	1350	460	1500	519	290
48	280	107	700	166	220	225	60	284	200	343	230	402	425	461	19000	520	2600
49	525	108	85	167	80	226	42	285	600	344	125	403	3250	462	9000	521	850
50	525	109	145	168	200	227	140	286	80	345	425	404	425	463	140	522	300
51	600	110	1150	169	675	228	300	287	44	346	2800	405	210	464	105	523	105
52	1650	111	95	170	475	229	400	288	350	347	2500	406	210	465	105	524	325
53	2100	112	75	171	290	230	325	289	240	348	2000	407	115	466	230	525	425
54	325	113	115	172	1000	231	325	290	675	349	575	408	300	467	500	526	300
55	450	114	90	173	450	232	625	291	475	350	250	409	1500	468	500	527	3000
56	230	115	250	174	200	233	425	292	280	351	105	410	700	469	75	528	650
57	260	116	38	175	110	234	500	293	240	352	85	411	250	470	125	529	110
58	800	117	350	176	70	235	60	294	135	353	350	412	1850	471	400	530	625
59	4250	118	105	177	200	236	400	295	350	354	32	413	250	472	100	531	375