

Frank Darwin Everts operated Everts & Company's Express from the *Central House Ranch*, about 12 miles northeast of Marysville. He served the Gibsonville Ridge region and parts of Sierra County north of the North Fork of the Yuba River and south of the North Fork of the Feather River. In September of 1851, the Central House Ranch building was destroyed by fire and all of Everts' mail listings were lost. The office was moved to the Eli Lester *Rabbit Creek House* at Rabbit Creek (renamed Rabbit Town and finally La Porte in Oct, 1857). Indications are that he ran a mail listing through the post office at Marysville during this period. In May-June, 1852, he formed a partnership with John Adam Snell and the name of the operation was changed to Everts, Snell & Co. Various other partnerships followed until on Sep 1, 1862 the routes and possibly all of the express business were sold to Holland, Morley & Co.



Frank D. Everts had numerous business partners during his time in the express business:

Everts & Co.	1850 - Jun, 1852
Everts, Snell & Co.	Jun, 1852 - Jan 25, 1854
F. D. Everts & Co.	Jan 25, 1854 - Feb, 1855
Sold to Adams/Reclaimed	Feb, 1855 - Mar, 1855
Everts (after Adams)	Mar, 1855 - May 10, 1855
Everts, Davis & Co.	May 10, 1855 - Aug, 1856
Everts, Hannon, Wilson & Co.	Aug, 1856 - a few weeks
Everts, Wilson & Co.	Sep, 1856 - 1862



Forwarded by Everts & Co's Express from Nelson Creek to Marysville; by post office to San Francisco with **Marysville Cal Aug 26** (1851) postmark and **5** rate marking. Enclosed letter from semi-literate writer datelined *Nelsons Krick the 10th of August, 1851*, transcribed below (sic).

Mr. John Center, San Francisko

Dear Sir,

I got the opportunity to find your direktion of Mr. Turner from his claim and I am now keep the Ameriken Ranch. I cam here bi Land and are in good Helt. I wish you wod send me few word and if you have any thing to imploi at and wath you are doing, you can depende on me now as you have don before. Do not forget to give me your direktion and some interesting news for me and I schall be with you as soon as Posible, Send one letter to Sacramento and one to Nelsons Krick

Better yours

Obedient servent [servant]

M. Rudolph Lundblad [?]



Unclear origin. Very light pencil notation Sept 26, 1851 would indicate that the PAID marking with “6” manuscript prepays the rate in effect Jul 1, 1851 for distances >3000 miles, leading one to believe an east coast origin. **Forwarded by Everts & Cos Express** from Sacramento to the mines in Brownsville with pencil notation **\$1.50** express rate and **Bl**, Everts’ directive for Brownsville.



Albion, Mich Jul 15 (1852) PAID 6 to Sacramento; by **Everts & Cos Express Feather River** to Brownsville, per Everts’ **BrV** and **1.25** express directive and rate notations in pencil. Light pencil “1852” below Albion postmark, perhaps dated when contents were still present.



Dalton O. Aug 6 (1852) with **10** (unpaid) rate marking to Sacramento City; by **Evert Snell & Cos. Feather River** to Lexington House (near Downieville) with Everts Snell's *Lex* and *1.25* express directive and rate notations in pencil.



Columbus Ohio Oct 14 (1852) with **PAID 6** rate marking to Sacramento; by **Evert Snell & Cos. Feather River** to Spanish Flat with Everts Snell's *S.F.* and *1.50* express directive and rate notations in pencil. *The Evert (error spelling) Snell handstamp was used into March 1853, when it was replaced with the corrected Everts Snell marking.*



Auburn N.Y. Aug 3 (1853) with **Paid 6** in circle indicating prepayment of postage to Sacramento City; by **Everts Snell & Cos Express Feather River** with pencil **6c GD 1.50** indicating \$1.50 express fee due by addressee at Gibsonville Diggings. Pencil docketing *Rec'd Gibsonville Sept 26th 1853* dates this cover. *Gibsonville was on a ridge between the South Fork of the Feather River and the North Fork of the Yuba River.*



By **Everts Snell & Cos. Express Feather River** from Marysville to Bidwells Bar with express rate notation of **25** cents. C. B. Macy, sender of this letter, was Adams agent in Marysville. Docketing on verso indicates Apr 1, 1854 receipt, during the F. D. Everts & Co. period of operation.



By **Everts, Snell & Co Express Gibsonville**. to Marysville; entered the mails with red **Marysville Cal. Mar 31** (1854) postmark and blue grid cancels tying two 3c 1851 issue adhesives to Terre Haute, Indiana. *Gibsonville March 20th, 1854* heading on miner's letter transcribed, in part, below. *The unique example of this marking.*

Gibsonville, March 20th 1854

...Father says that some of my letters are not post paid, I am sure I sent the money for the Postage – when I had no stamps...about a week ago a man got his leg broke by some dirt falling upon him whilst mining and two others (each) got their legs broke today, each one in different drifts, I should think so many accidents would make people more careful...here we cannot take a rocker and go out and make something every day as we could down on Feather River. I think I shall quit mining before long and go to Teaming or something else unless I have better luck than I have had lately...today a man had his leg amputated, he had got it broken about a month ago and the doctor bound it too tight and it mortified...Amory K. Blinn



By **Adams & Co. San Francisco Nov 9** (1854) to Marysville; exchanged with Everts & Co. for delivery to Bidwell's Bar with their **Everts & Cos. Express Marysville Connecting with Adams & Co.** handstamp known used in 1854-1855 (with "Connecting with Adams & Co." removed after Adams & Co.'s failure on Feb 23, 1855). Express rate collect **25** (¢) at upper right.



Adams route to Marysville in blue and Everts & Co's route to Bidwell's Bar in red



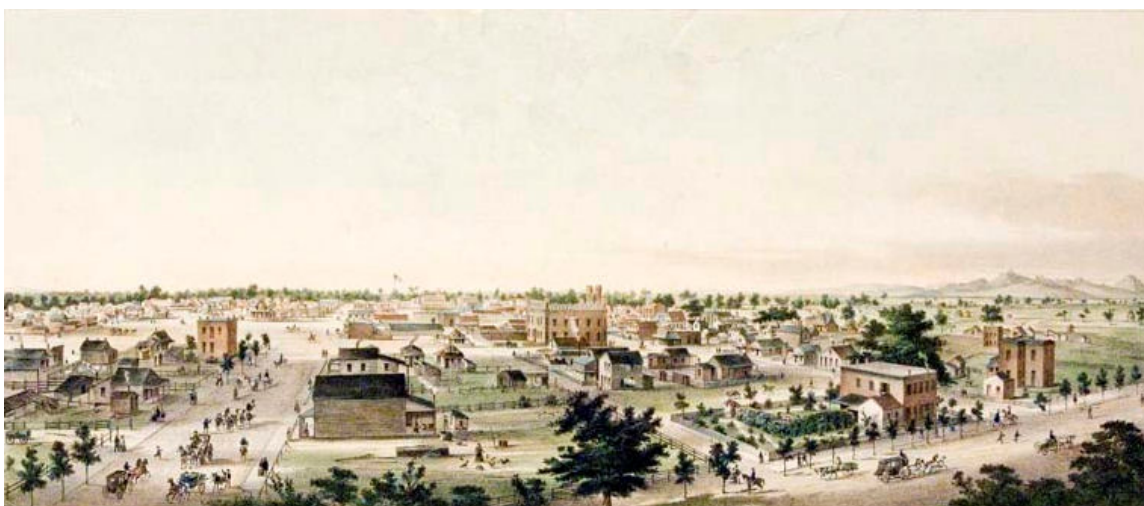
Georgetown/Ky (early 1855) with two 3¢ 1851 adhesives prepaying 6¢ postage to Marysville; by **Everts & Cos Express Marysville Connecting with Adams & Co** with initial express fee of *Coll 25¢* changed to *Coll 100¢* upon redirection to “Opposite Mouth Nelson Creek, Plumas Co”. *Nelson Creek flows into the Middle Fork of the Feather River, near Quincy. Prepaid rate of 6¢ in effect Jul 1, 1851 to Apr 1, 1855 when it was increased to 10¢.*



Georgetown/Ky Apr 12 (1855) with pair of 3¢ 1851 adhesives pen cancelled; however, the prepaid rate for distances >3000 miles changed from 6¢ to 10¢ on Apr 1, 1855. Apparently, the postmaster at Georgetown realized this after Apr 12, held the letter in his office until the sender returned on **Apr 14**, collected an additional 4¢, marked it **PAID 4**, and sent it on to Marysville. From Marysville by **Everts & Cos Express Marysville Connecting with** (“Adams & Co” removed) for delivery “opposite mouth of Nelson Creek”.



By **Pacific Express Co. Sacramento Oct 31** (ca1855) to Marysville, exchanged with **Everts, Davis & Co's. Express Marysville** for delivery to Bidwell's Bar.



Lithograph of Marysville in 1856



By **Everts, Davis & Cos. Express Nelson Creek** to Marysville; by post office from **Marysville, Cal. Paid by Stamps Sep 5** (1855) to Montrose, Pa. Enclosed letter datelined *Mountain House No.2 Aug 1st, 1855* transcribed below:

Mountain House No.2 Aug 1st, 1855

Dear Brother & Sister,

*You may be surprised to hear that we are in California, but such is the case. **We are keeping the mountain house No.2 90 miles from Marysville. We have been here 5 weeks came down on horseback (eight hundred miles).** Marcus rode by himself on a little Indian pony, the trip just suited him. We were 5 weeks coming down had no sickness. I have not time to tell you much about our journey nor anything else. McCoy's folks are well they had sold out before we got here and will start back for Iowa in a few weeks. They sold for seven thousand dollars. I do not know how much they made while on the ranch. You must excuse this short letter for I really have not time. Do not forget your mountaineer friends. Write quick. Our love to all. Yours in great haste.*

Mary, Philander and Marcus

Horace, Augusta, Children, & friends in general

PS direct your letters to Marysville, California

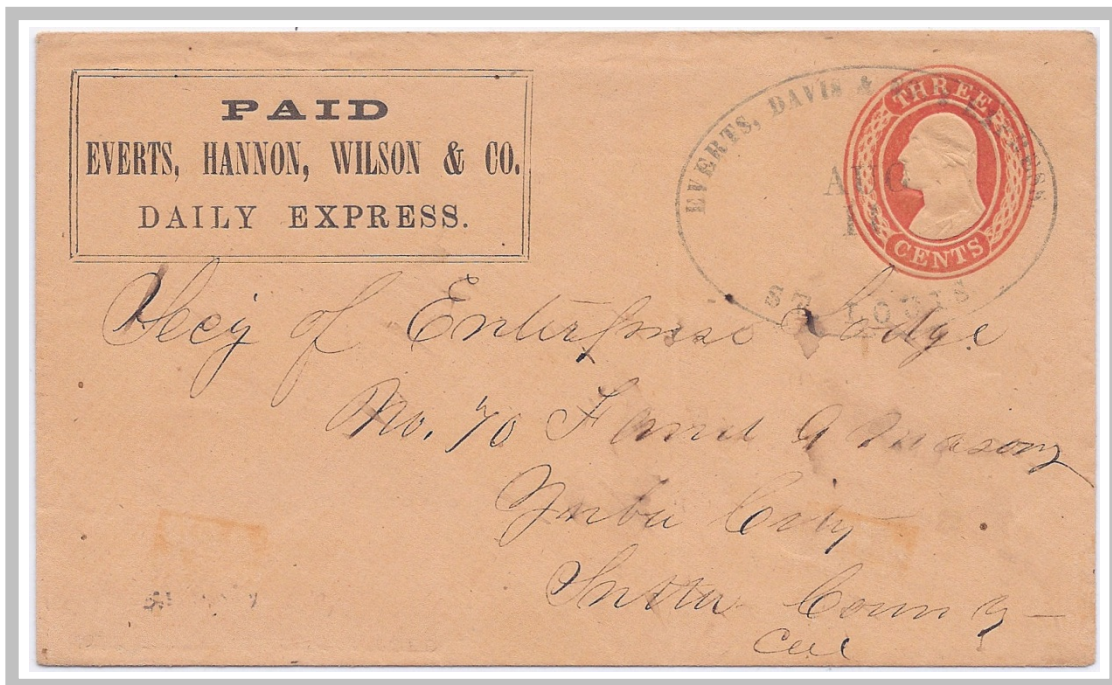
McCoy's folks will come and see you if they can



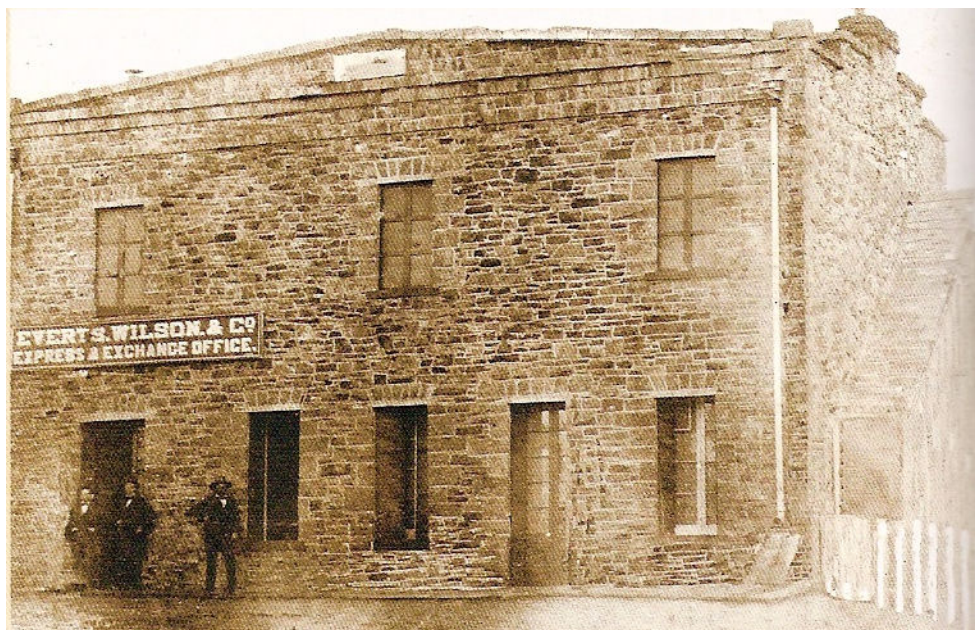
By **Everts, Davis & Co's Express Saint Louis** with their **PAID** handstamp to Rabbit Creek (later Rabbit Town, then LaPorte).



By **Everts, Davis & Co. PAID Daily Express** franked envelope to Marysville, with manuscript notation “to M.V.” (to Marysville) after the PAID designation, and “to collect in S. F. 25 cts”; by either Pacific Express or Wells Fargo from Marysville to San Francisco.



By Everts, Hannon, Wilson & Co. Daily Express franked envelope with Everts, Davis & Cos. Express St. Louis Aug 11 (1856) to Yuba City. One of the few Everts, Hannon, Wilson & Co. franks that can be proven used during the period of that partnership's existence.



Everts, Wilson & Co's Express office in St. Louis, California (ca1857)



By Everts, Wilson & Co's Express. PAID. frank with defunct **Everts, Davis & Co's. Express Forbestown Nov 2** handstamp to Oroville. The Evert-Davis partnership ended in Aug, 1856 with Everts-Wilson partnering beginning in Sep, 1856 making this express usage, in all likelihood, from 1856.



By Everts, Wilson & Co's Express. PAID. frank to Oroville. Same type printed frank as other cover on this page, except on white government stamped envelope.



PAID. Everts, Wilson & Co.'s Daily Express. to Strawberry Valley; by post office from **Strawberry Valley Cal. Mar 23** (ca 1859) to Mobile, Alabama. *Unlisted variety of the Strawberry Valley postmark; Thomas Type 6 frank.*



PAID. Everts, Wilson & Co.'s Daily Express. Overland Via Los Angeles to Marysville; by post office from **Marysville Cal. PAID By Stamps Nov 4** (ca 1859) to Newport, Kentucky. *Thomas Type 6a printed frank.*



PAID Everts, Wilson & Co.'s Daily Express. to Marysville; by **Wells, Fargo & Co. Marysville Feb 11** (1860) to San Francisco. Docketed at left *February 9/60*. One of ~5 known examples of this type printed frank.



PAID. Everts, Wilson & Co. Daily Express. with Everts, Wilson & Co.'s **Express La Porte** handstamp from La Porte to Quincy.. *The unique example of this type printed frank.*



By **Everts, Wilson & Co.'s Express PAID** to Gibsonville; by post office **Gibsonville Cal Apr 30** to Quincy. *The only recorded example of this Everts, Wilson & Co.'s printed frank.*



PAID. Everts, Wilson & Co.'s Daily Express. to LaPorte; by **Holland, Morley & Co's Express La Porte, Cal.** to Marysville; by **Wells Fargo & Co.'s Express from Marysville** to San Francisco. *A rare type of Everts, Wilson printed frank, used very late in the Everts Wilson period, or after the sale to Holland, Morley & Co. as a leftover printed frank. Likely late 1862 usage.*