

POSTAL HISTORY OF GERMAN COLONIES AND POST OFFICES ABROAD: MAIL TO, FROM AND THROUGH POST OFFICES OF THE UNITED STATES AND ITS POSSESSIONS

Most mail sent to and from Pre-WWI German colonies and post offices abroad was sent from or to Germany. Mail to and from other countries is uncommon to very rare. This exhibit shows examples of mail originating in post offices of the USA and its possessions sent to German colonies and post offices abroad, mail sent to the United States and its possessions from German colonies and post offices abroad, and mail transiting the post offices of the United States which was sent to or from the German colonies and offices abroad.

1. German Post offices in China



Post card mailed from Pittsburgh PA in 1905 to a German soldier in Tientsin, China. Receiving mark from German PO in Tientsin, forwarded to German PO in Peking.

Cover sent from US Post office in Philippines to German warship SMS Deutschland in China in 10-1-1898. Received in German PO in Tsingtau Kiautschou on 10-14-1898. Underpaid and charged Postage due.



US postal card sent from US Military PO in Taku, China on 12-13-1900, transported to German military PO in Tongku, from there sent to Germany, arrived 1-29-01.

Registered cover sent from German PO at Shanghai on 7-10-1915 to Flushing NY. Received there on 8-5-15. During WWI, mail service from the German POs in China to the US was available until 3-16-1917.



2. German Post Offices in Morocco

Cover sent from German PO in US Consulate General at Tangier on 4-2-1908 to St. Louis, Mo. Wax seal of Consulate General is on the reverse.



Message Reply Card Issued by German PO in Morocco; Message half sent from Tangier to Germany on 10-13-1900; Card then transported to the US Post Office at the 1900 Paris Exposition and mailed to Germany on 10-25-1900.



3. German Post Offices in the Ottoman Empire (Turkey)

Updated US postal card sent from Maricopa, Arizona Territory on 8-6-1880 to German PO in Constantinople. Received there on 9-5-1880.



US postal card sent from Washington, DC on 5-7-1894 to Austria. Inexplicably sent to the German PO in Constantinople before being sent back to Austria, arriving on 3-26-1894.



Uprated US postal card sent From Philadelphia PA to German PO at Constantinople Arriving 4-3-1903.

Cover sent by US Legation in Constantinople from German PO on 4-28-1882 to Indiana.



Registered cover sent from German PO in Constantinople On 10-23-1899 to New York, Arriving on 11-6-1899. Reverse Has additional franking, which includes rare margin gutter Pair of 5pf Crown & Eagle stamp.

4. German New Guinea

S. S. NIPPON MARU



Packet Boat.



Up-rated US postal Stationery paying 2x letter rate; Originated in San Francisco per Reverse; postmarked in Hawaii on 3-19-1907; Packet Boat marking, traveled via Sydney (4-22) and Simpsonhafen (5-16-1907).

Messrs. Kernschian & Co
Matupi
Bismark Archipelago

After 5 days, return to
VALENTINE & COMPANY,
257 Broadway,
NEW YORK, N. Y.



Two Cent postal Stationery paying printed matter rate To Herbertshohe, mailed on 2-24-1911, no transit or Arrival markings.

Fiskus Deutsch-Neu-Guinea,
Herbertshohe,
German New Guinea.

Deutsch abolempier



Einschreiben

Registered

Mr. J. O. Frey

To forward

Hamilton Bermuda

33809

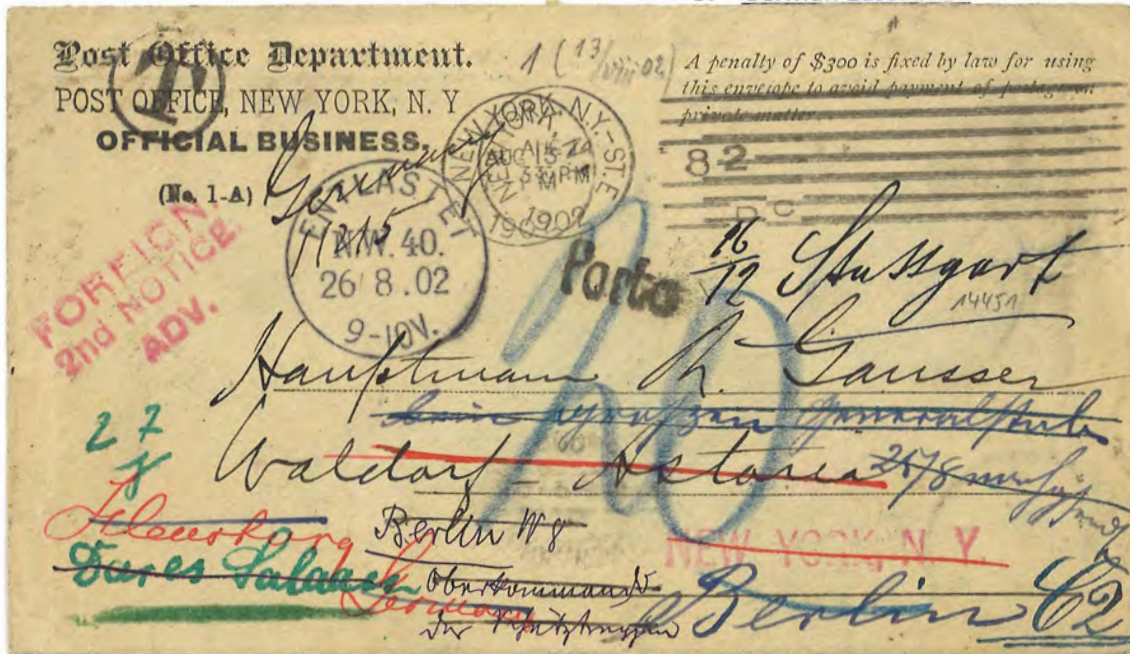


*69 W. High St
America Detroit
Mich*

Registered cover sent from Herbertshone, GNG on 7-9-1914 to Bermuda via Hong Kong (7-24-1914), San Francisco (8-26-1914), and New York (9-2-1914); Censored in Bermuda and forwarded to Detroit, MI, arriving on 9-22-1914.

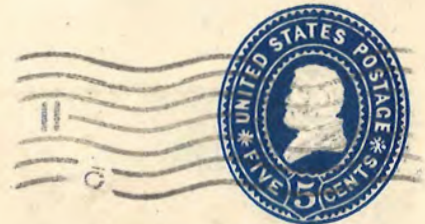
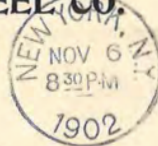
5. German East Africa

US Penalty Envelope mailed on 8-13-1902 to local Hotel; Returned and forwarded to Flensburg, Germany (8-25-02) Then to Berlin (8-26-01), then Forwarded to Dar es Salaam, German East Africa (9-20-1902), Then to Berlin (12-16-1902), Then to Stuttgart (12-17-1902). Postage due charged on Arrival.



US Postal Stationery
Sent from New York
On 11-6-1902 to the
Triangi Gold Syndicate
In Dar es Salaam,
German East Africa,
Arriving 12-12-1902,
Inexplicably forwarded
To Kilimatinde, without
Forwarding marking,
Arrived there 12-31-1902.

If not delivered in 10 days return to
THE PELTON WATER WHEEL CO.
143 LIBERTY STREET,
NEW YORK.



F. G. Scheffer, M.E., Esq.,
care The Trangi Gold Syndicate,
Dares Salaam,
German East Africa.

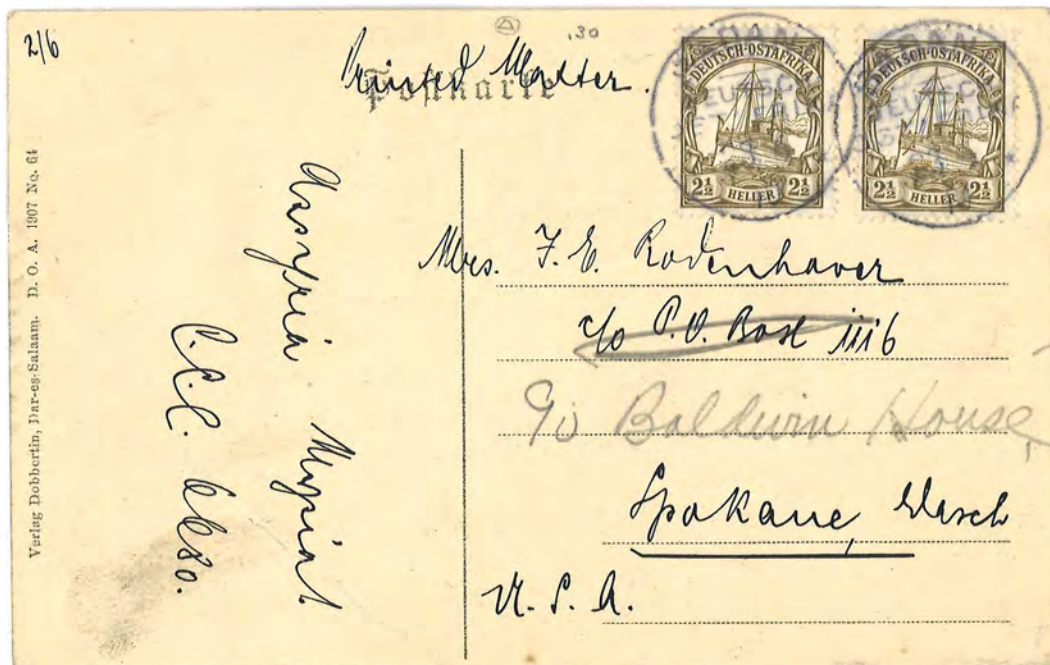
US postal card sent from
Brooklyn, NY on 3-9-1905 to
Soldier in Dar es Salaam, via
Paris (!) (3-19-1905) and
Zanzibar (4-14-1905),
Arriving 4-15-1905.



Registered cover sent from Amani, German East Africa on 1-20-1911 to Chicago, IL, arriving on 2-24-1911



Post card sent at printed matter rate sent from Sadani, German East Africa to Spokane, Washington on 6-23-1910



6. German Southwest Africa

Message-reply card sent from Swakopmund, German SW Africa, on 11-17-1898 to Mount Vernon, IN, forwarded to Floraville, IL, Reply Card sent from Floraville on 1-10-1899 to Swakopmund, arriving on 2-2-1899.

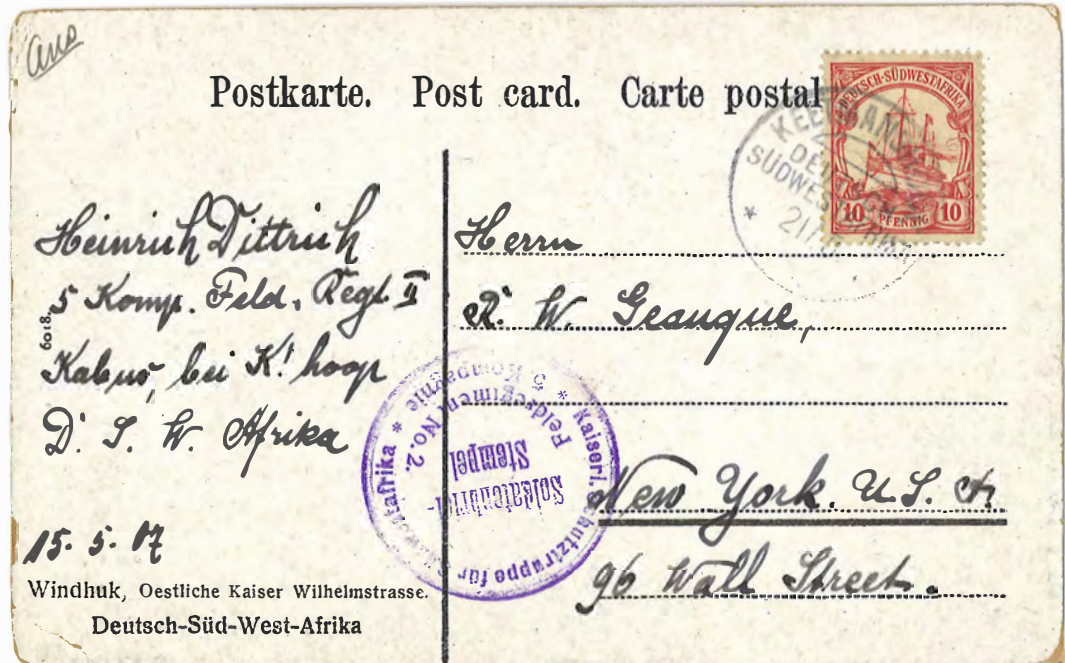


Cover sent from Liebenthal KS on 2-21-1911 to Keetmanshoop German SW Africa, arriving 4-2-1911. Stamp Dealer Mail.

Registered Cover from Luderitzbucht sent on 7-21-1903 via Capetown (7-24-1903) to Jersey City, NY, arrived 7-18-1903,
 Rare non-philatelic single franking of 80pf Yacht stamp paying triple rate plus registration fee



Post Card franked with 10pf stamp sent from Keetmanshoop on 5-21-1907 by Soldier in the German Schultztuppe Fighting in the Herero Rebellion to New York. Postage for non-officer soldiers was free for mail sent to Germany, but mail sent to countries outside the German Empire required regular international postage.

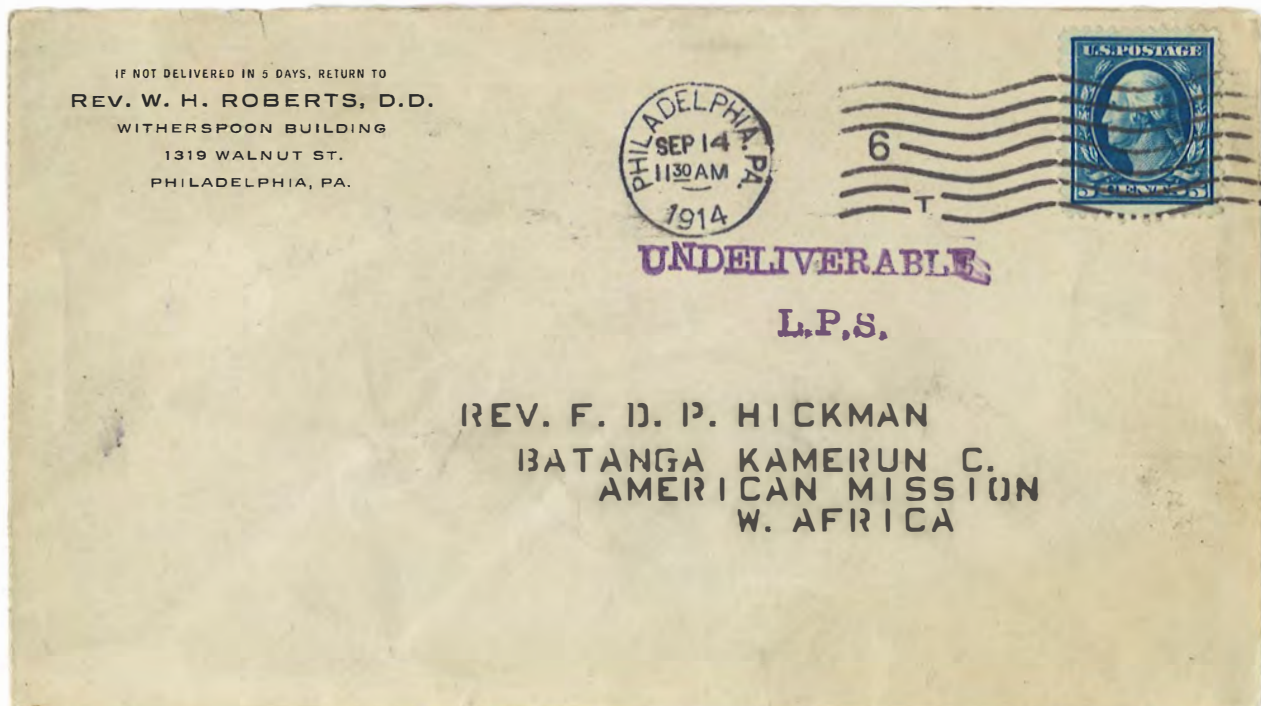


7. Kamerun

Cover franked with 5 cent Lincoln sent from Cincinnati, Ohio on 9-11-1907 to Batanga, Kamerun. There was no PO in Batanga at this time; transit marking from Kribi (10-16-1907)



Cover franked with 5 cent Washington sent from Philadelphia PA on 9-14-1914 to Batanga, Kamerun. Cover routed via London; Due to Outbreak of WWI, Cover returned as undeliverable by the London Postal Service. Foreign mail addressed to Kamerun was delivered via Rio Muni as late as 1915,



Postcard sent from Duala, Kamerun on 11-23-1905 to Portland OR, received late December, 1905; picture side shows wedding of German missionaries



8. Karoline Islands

Cover sent from New York to Yap, Karoline Islands on 12-15-1901 via San Francisco (12-21-1901), Sydney (1-17-1902) and Ponape (4-2-1902); Returned to sender because addressee had left; arrived back in NY on 10-6-1902.



9. Kiautschou

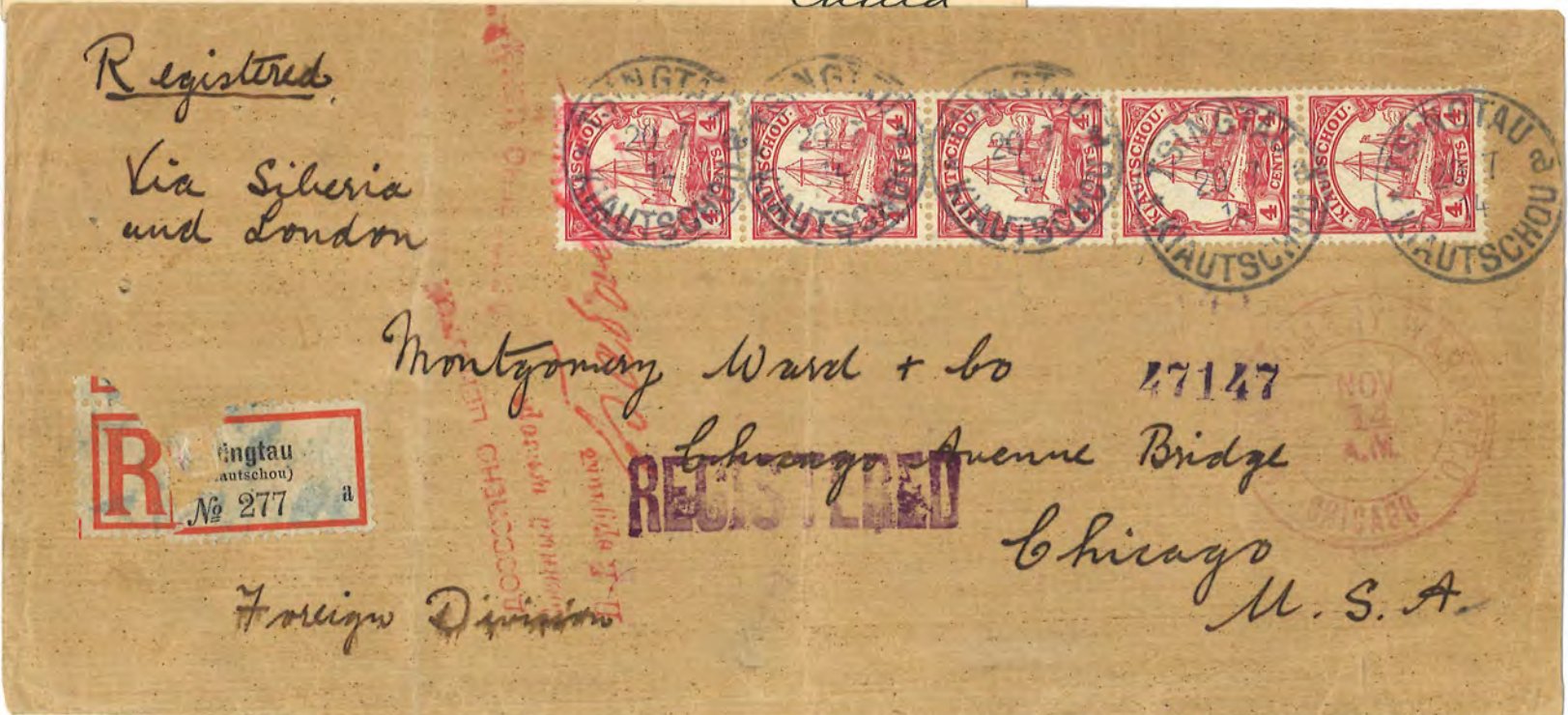
US Postal Card sent from US Post Office in Shanghai on 11-12-1902 to German soldier in Tsingtau, received 11-20-1902.

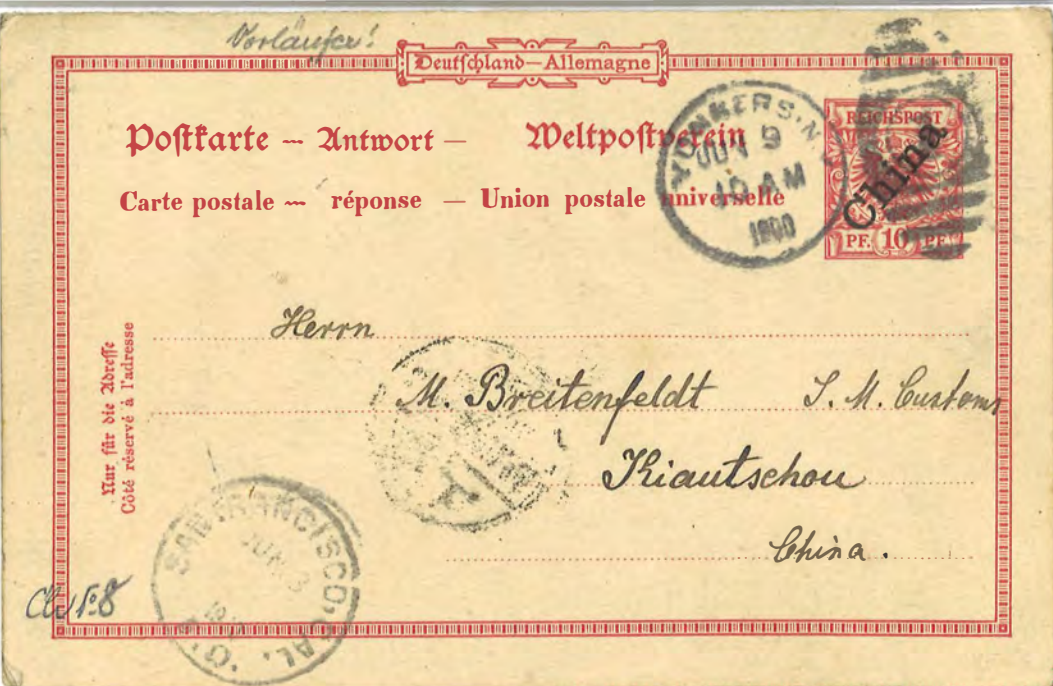


US Postal Card issued For Philippines Sent from Manila on 10-15-1904 to Kiautschou, via Hong Kong ((10-31-1904) and Shanghai (11-4-1904) Received on 11-7-1904.



Registered Cover Sent from Tsingtau, Kiautschou on 7-20-1914 Just prior to Outbreak of WWI to Chicago, IL. Originally sent by train via Siberia, but seized and censored by Russians; Eventually released, arrived in Chicago On 11-14-1914





Intact Message-Reply Card sent from German Offices in China, Used as a Forerunner in Tstingtau, Kiautschou, on 3-10-1900 to Yonkers, NY via US Post Office in Shanghai, arrived 4-11-1900; Reply used from Yonkers back to Kiautschou on 6-9-1900, arrived July, 1900.



10. Mariana Islands



Cover sent from Saipan Mariana Islands on 2-20-1901 to San Francisco, via Nagasaki (8-4-1901 and Yokohama 4-11-1901, arrived on 4-126-1901

11. Marshall Islands



US Postal Card sent from Blake, ?? on 5-8-1889 to Jaluit, Marshall Islands, via San Francisco (6-9-1889), arrived 11-11-1889. Very rare early incoming mail. German PO opened 3-19-1889.

US Cover sent from Coldwater, MI on 2-26-1912 to Nauru, Then part of Marshall Islands, via Sydney (4-4-1912), arriving 7-29-1912.



US Cover from San Francisco on 7-14-1900 to Apia, Samoa, arrived 10-18-1900, forwarded to Kiatschou, the forwarded to Wilhelmshaven and then to Flensburg, Germany, arrived Feb. 1901.



Cover sent from Pago Pago, American Samoa on 8-6-1914 Apia, German Samoa, arrived on 8-20-1914. Censored by Germans. WWI censored mail From German Samoa is Extremely rare, Germans Surrendered on 8-29-1914.

Registered cover sent from Apia, Samoa on 8-11-1895, with Provisional cancel used due to Destruction of regular cancel by A Typhoon, to New York, Arrived 9-6-1895.



Post card mailed from Apia, Samoa on 5-30-1912 Santa Cruz Brazil, but accidentally sent to Santa Cruz, California, misspent to Santa Cruz marking, arrived Santa Cruz, CA 6-25-1912, Forwarded to Brazil

Abchnitt. Coupon.

Kann vom Empfänger abgetrennt werden.
Peut être détaché de le destinataire.



Postanweisungsbetrag.
Montant du mandat.

25

Name, Wohnort und Wohnung (Straße und Nr.) des Absenders
Designation de l'envoyeur

Deutschland. Allemagne.

Auslandspostanweisung
Mandat de Poste International

über
de la somme de 25.-
(arabische Zahlen)

Die Einheiten (Franken, Kronen, Mark usw.) in Buchstaben und in lateinischer Schrift

zu zahlen an
payable à M. Tom Meredith

Bestimmungsort
Lieu de destination Pago-Pago

Wohnung (Straße und Nr.)
Adresse du destinataire

Bestimmungsland
Pays de destination

Gut für
Bon pour 25 gleich
soit 65 M. Pf.

Aufgabe-Nr.
Numéro d'émission 732

Tag der Einzahlung
Date d'émission 24/8

Freimarken
und Aufgabestempel.



Unterschrift
des Annahmebeamten.
Signature de l'agent
qui a dressé le mandat.

A 24 (5. 07)

International Postal Money Order sent from Apia, Samoa on 8-24-1914, just before the Germans surrendered to New Zealand troops in Samoa, to Pago Pago American Samoa, Received 8-29-1914, Sent on the last boat to leave while Samoa was Under German control. Only a few of these International Money Orders are known from German Samoa.

13. Togo

Uprated Togo Postal Card sent from Klein Popo on 11-6-1900 to Cleveland, O., arrived 12-129-1900.

Deutsche Reichspost

Postkarte



An
Mr. H. A. Kuehner

U. S. A.

Cleveland (Ohio)
Broadway 1259

Wohnung
(Straße und Hausnummer)

Registered

2017
Messrs. Mead Cycle Company
1243-1245 Wabash Ave.,
Chicago, Ill. U.S.A.

Lome (Togo).
Eingeschrieben.
No. 234. R



Registered cover sent From Lome, Togo on 8-8-1902 to Chicago, IL via London (9-20-1902), Received 9-29-1902.