

# NORWICH

INDEPENDENT LETTER CARRIERS  
HALE & Co.

PREPAID BY STAMP

SCOTT # 75L5  
THIRD STATE, Pos. 10

SINGLE



Forwarded by  
HALE & Co.  
from  
Norwich, Ct.

18x13 MM  
BLACK  
E: 1844 AUGUST 12  
L: 1845 JUNE 29

DATELINED: Norwich, October 29, 1844  
*Letter + 1 Dufft  
. 2 cz*

SCOTT # 75L5  
THIRD STATE, Pos. 19/20

DOUBLE



DATELINED: Norwich, October 29, 1844  
*Letter + another letter  
- for enclosed*

# NORWICH

INDEPENDENT LETTER CARRIERS  
HALE & Co.

COLLECT



COLLECT  
6½ Cents  
for  
Norwich Office

18.5x12 MM  
BLACK  
E: 1844 AUGUST 12  
L: 1845 JUNE 29

DATELINED: Norwich, August 23, 1844

PREPAID BY STAMP

SCOTT # 75L5  
THIRD STATE, Pos.1

Forwarded by  
HALE & Co.  
from  
Norwich, Ct.  
18x13 MM  
BLACK  
E: 1844 AUGUST 12  
L: 1845 JUNE 29



DATELINED: Norwich, October 30, 1844

6¢ + 2 Dn&Ts  
.302



# NORWICH

INDEPENDENT LETTER CARRIERS  
HALE & Co.

PREPAID BY STAMP

SINGLE

SCOTT # 75L2



DATELINED: Norwich, April 10, 1845

*Norton conversion  
Census with the 75L2 from April 6-45*

PAID  
18x4.5 MM  
BLACK  
E: 1844 AUGUST 12  
L: 1845 APRIL 10

PAID

Forwarded by  
HALE & Co.  
from  
Norwich, Ct.

Forwarded by  
HALE & Co.  
from  
Norwich, Ct.

18x13 MM  
BLACK  
E: 1844 AUGUST 12  
L: 1845 JUNE 29

# NORWICH

INDEPENDENT LETTER CARRIERS  
HALE & Co.

1844 August 15

PREPAID BY STAMP

Manuscript *N* cancel



Manuscript "*Hale & Co 58 Wall St*" on reverse.

Docketed from Jos A Griswold

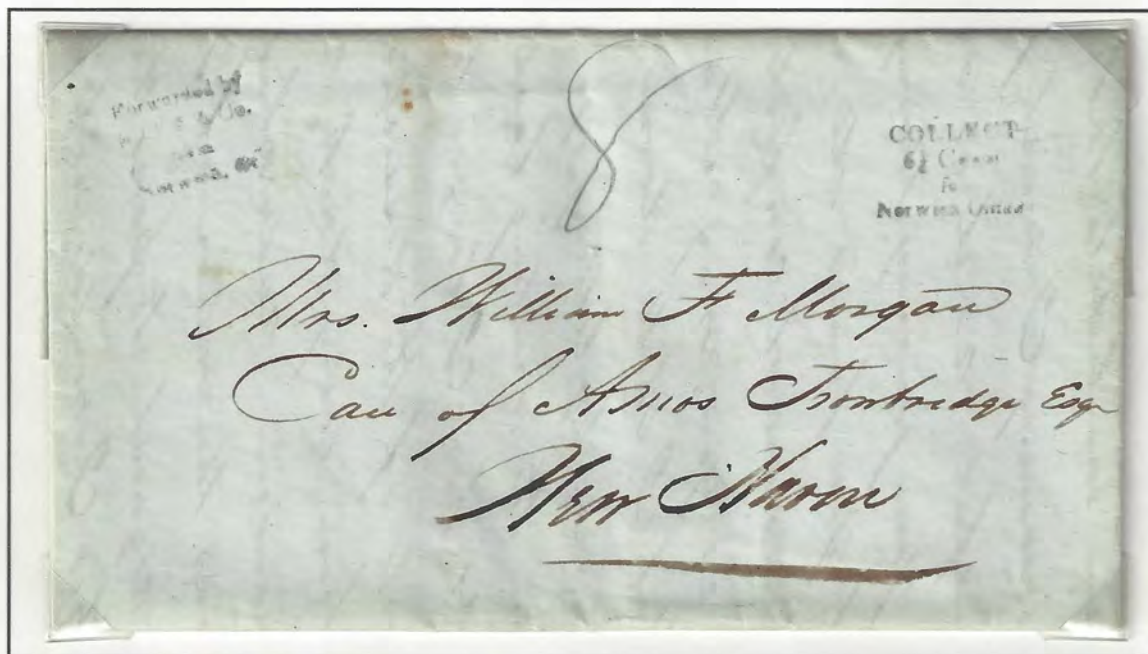
Forwarded by  
HALE & Co.  
from  
Norwich, Ct.

18x13mm  
Black  
E: 1844-07-19  
L: 1845-06-29

# NORWICH

## INDEPENDENT LETTER CARRIERS HALE & Co.

COLLECT



DATELINED: Norwich, June 29, 1845

RERATED "8" IN NEW HAVEN TO INCLUDE LOCAL DELIVERY CHARGES.

COLLECT  
6 1/2 Cents  
for  
Norwich Office

18.5x12 MM  
BLACK  
E: 1844 AUGUST 12  
L: 1845 JUNE 29

Forwarded by  
HALE & Co.  
from  
Norwich, Ct.

18x13 MM  
BLACK  
E: 1844 AUGUST 12  
L: 1845 JUNE 29

CONGRESS PASSED THE ACT OF MARCH 3, 1845, WHICH ESTABLISHED ALL TRANSPORTATION ROUTES AS POSTAL ROUTES, OVER WHICH THE POST OFFICE HAD A COMPLETE MONOPOLY. ON JUNE 30, 1845, THE LAST MAIL WAS CARRIED BY HALE & Co. AS WELL AS OTHER INTER-CITY EXPRESS FIRMS, ENDING AN ERA THAT LASTED A LITTLE MORE THAN EIGHTEEN MONTHS.

# NORWICH

INDEPENDENT LETTER CARRIER  
HALE & COMPANY  
INCOMING TO NORWICH

NEW YORK



DATELINED: NEW YORK, JUNE 7, 1845  
JAMES T LEWIS

CONGRESS PASSED THE ACT OF MARCH 3, 1845, WHICH ESTABLISHED ALL TRANSPORTATION ROUTES AS POSTAL ROUTES, OVER WHICH THE POST OFFICE HAD A COMPLETE MONOPOLY. ON JUNE 30, 1845, THE LAST MAIL WAS CARRIED BY HALE & CO. AS WELL AS OTHER INTER-CITY EXPRESS FIRMS, ENDING AN ERA THAT LASTED A LITTLE MORE THAN EIGHTEEN MONTHS.



NEW LONDON COUNTY

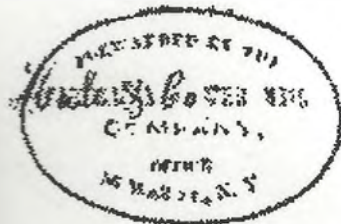
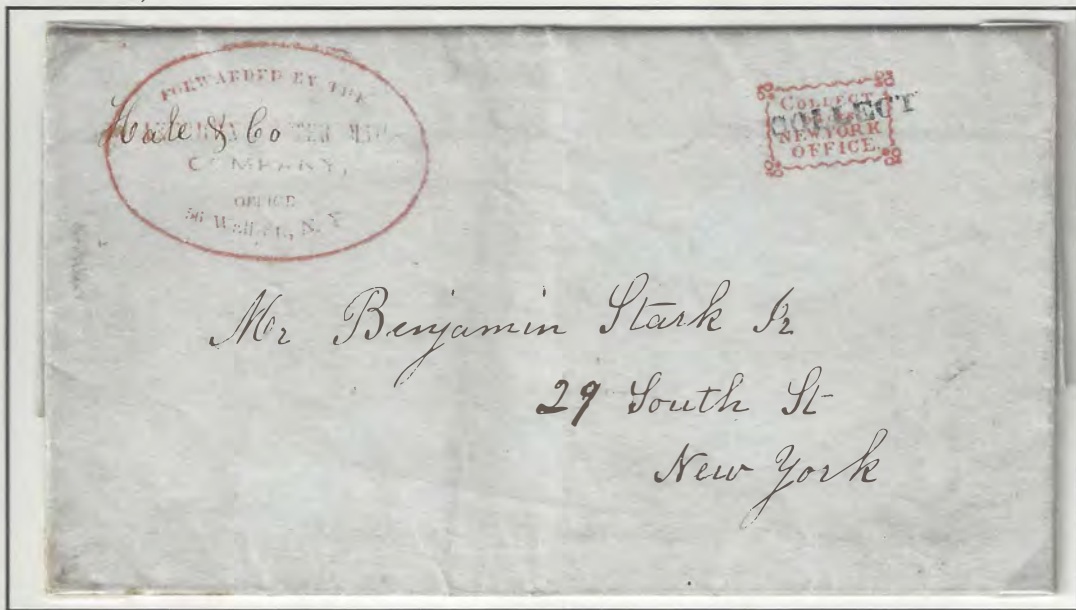
POST OFFICES and POSTMARKS

# NEW LONDON

INDEPENDENT LETTER MAIL

HALE & COMPANY

OCTOBER 12, 1844



FORWARDED BY THE  
AMERICAN LETTER MAIL  
COMPANY  
OFFICE  
56 Wall St., N. Y.  
43x28mm oval  
Red 1844 - 1845



COLLECT  
6 1/4 cts.  
NEW YORK  
OFFICE  
18x12mm box  
Red 1844 - 1845

ORIGINALLY INTENDED FOR DELIVERY BY THE AMERICAN LETTER MAIL Co.  
THIS LETTER WAS TRANSFERED TO HALE. *at New London William W Stark*

*The manuscript Hale is written over the ALM handstamp*

*COLLECT IS STAMPED OVER ALM* *collect 6 1/4 CENTS NEW YORK OFFICE*

COLLECT  
20x3mm  
Black 1844

NEW LONDON COUNTY

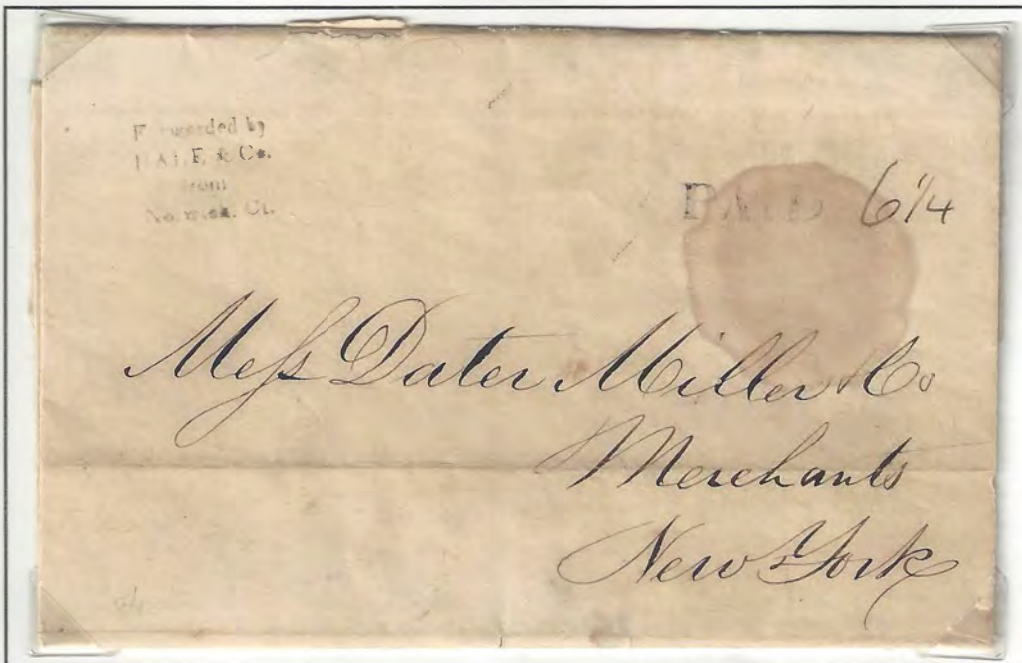
POST OFFICES AND POSTMARKS

*NORWICH*

INDEPENDENT LETTER CARRIERS  
HALE & Co.

PAID 6/4

PREPAID



Forwarded by  
HALE & Co.  
from  
Norwich, Ct.

18X13 MM  
BLACK  
E: 1844 AUGUST 12  
L: 1845 JUNE 29

PAID

PAID  
18X4.5 MM  
BLACK  
E: 1844 AUGUST 12  
L: 1845 APRIL 10

DATELINED: Norwich, August 12, 1844

NORTON CONVERSE & CO



# HARTFORD

## INDEPENDENT LETTER MAIL

HALE & CO



FORWARDED  
BY  
HALE & CO.  
FROM  
HARTFORD



COLLECT  
SIX CENTS  
FOR  
HALE & Co.

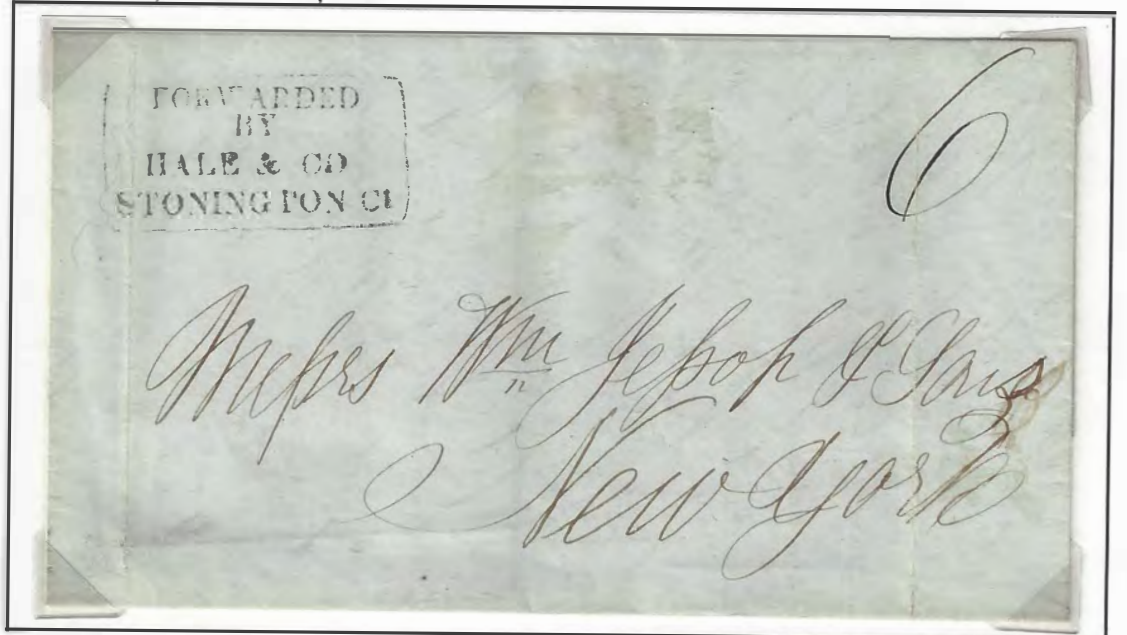
1845-03-12



Folded letter datelined: March 12, 1845, Hartford from H.B. Curtiss

WESTERLY RI, FEBRUARY 28, 1845

6 \*



LETTER PLUS TWO DRAFTS.

RECEIVED IN NEW YORK ON MARCH 3RD.

\*

*[Faint, illegible text, likely bleed-through from the reverse side of the page]*

*[Faint, illegible text, likely bleed-through from the reverse side of the page]*