

# NEW LONDON

1847

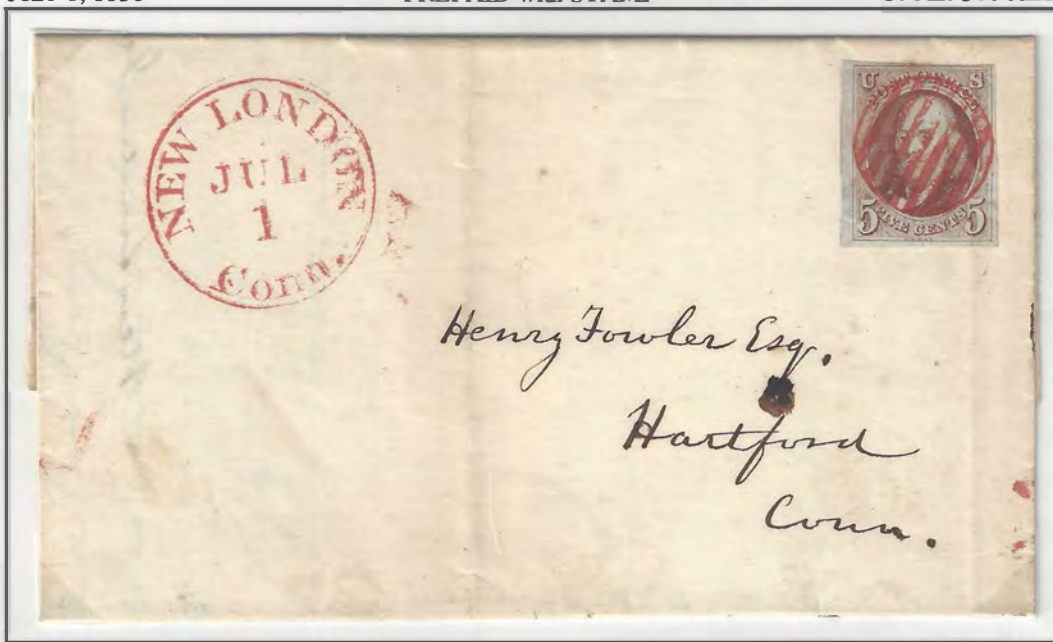
UNITED STATES FIRST ISSUE

SINGLE RATE

JULY 1, 1850

PREPAID with STAMP

UNDER 300 MILES



NEW LONDON Conn.  
30mmCDS  
Red




7 BAR GRID  
18 mm  
Red



NEW LONDON  
DEC 8  
CONN

Sylvanus Bourne Esq.  
Wareham  
Mass

Item No.: 273354  




FROM S. A. WEAVER & CO.,  
SOLE PROPRIETORS AND MANUFACTURERS OF THE CELEBRATED  
CANKER, SALT RHEUM SYRUP,  
CERATE AND CANKER CURE.  
GENERAL OFFICE, New London, Ct. WESTERN OFFICE, 7 College Building, Cincinnati.

NEW LONDON  
DEC 21  
CONN

C. J. Holden Esq.  
Turin 4 Corners  
Lewis Co N.Y.

# NEW LONDON

1851 ISSUE  
ORANGE/BROWN



7 BAR GRID  
18 MM  
RED  
E: 1850 JULY 1  
L: 1851 JULY 22  
GREEN  
E:  
L:  
BLACK  
E: 1853  
L: 1862 AUGUST 30



NEW LONDON Conn.  
30MM CDS  
RED  
E: 1841 SEPTEMBER 7  
L: 1851 AUGUST 11  
ULTRAMARINE  
E: 1841 NOVEMBER 9  
L: 1841  
GREEN  
E: 1852 MAY 24  
L: 1852 SEPTEMBER 19  
BLACK  
E: 1853 JULY 11  
L: 1855 FEBRUARY 12

JULY 22, 1851

SCOTT # 10



ACT OF MARCH 3, 1851  
FROM AND AFTER JUNE 30, 1851  
SINGLE LETTER RATE 1/2 oz.  
NOT EXCEEDING 3,000 MILES PREPAID -- 3 CENTS  
IF NOT PREPAID ----- 5 CENTS



Walter R. Jones Esq.  
Providence R.I.



Mrs. Isaac Bird,  
Hartford,  
Ct.



# NEW LONDON

1851 ISSUE  
ORANGE BROWN

NEW LONDON. CT.

3 PAID

33MM CDS

GREEN

E: 1851 OCTOBER 23

1852 L: ~~SEPTEMBER 23~~ OCTOBER 23

BLACK

E: 1853 AUGUST 10

L: 1854 NOVEMBER 1



OCTOBER 23, 1851

SCOTT # 10



**J. V. L. PRUYN,**

*Treas. U. & S. R. R. Co.,*

*Albany, N. Y.*

*Wm. & S. R. R. Co. Albany N. Y. Albany N. Y. Albany N. Y.*

ACT OF MARCH 3, 1851  
FROM AND AFTER JUNE 30, 1851  
SINGLE LETTER RATE 1/2 oz.  
NOT EXCEEDING 3,000 MILES PREPAID -- 3 CENTS  
IF NOT PREPAID ----- 5 CENTS

# NEW LONDON

## PREPAID BY STAMP

ACT OF MARCH 3, 1851  
 FROM AND AFTER JUNE 30, 1851  
 SINGLE LETTER RATE 1/2 OZ.  
 NOT EXCEEDING 3,000 MILES PREPAID -- 3 CENTS  
 IF NOT PREPAID ----- 5 CENTS



JULY 22, 1852



NEW LONDON Ct.  
 33MM CDS  
 RED  
 E: 1850 DECEMBER 10  
 L: 1851 JULY 25  
 GREEN  
 E: 1851 OCTOBER 14  
 L: 1852 OCTOBER 5  
 BLACK  
 E: 1854 APRIL 10  
 L: 1855 AUGUST 11

OCTOBER 5, 1852



# NEW LONDON

1851 ISSUE



NEW LONDON Conn.  
30mm CDS

RED

E: 1841 SEPTEMBER 7

L: 1851 AUGUST 11

ULTRAMARINE

E: 1841 NOVEMBER 9

L: 1841

GREEN

E: ~~1852 MAY 24~~ 1851 SEP 7

L: 1852 NOVEMBER 17

**BLACK**

E: 1853 JULY 11

L: 1855 FEBRUARY 12

NOVEMBER 17, 1852



ACT OF MARCH 3, 1851  
 FROM AND AFTER JUNE 30, 1851  
 SINGLE LETTER RATE 1/2 oz.  
 NOT EXCEEDING 3,000 MILES PREPAID -- 3 CENTS  
 IF NOT PREPAID ----- 5 CENTS

# NEW LONDON

1851 ISSUE  
SCOTT #9, STRIP OF 3

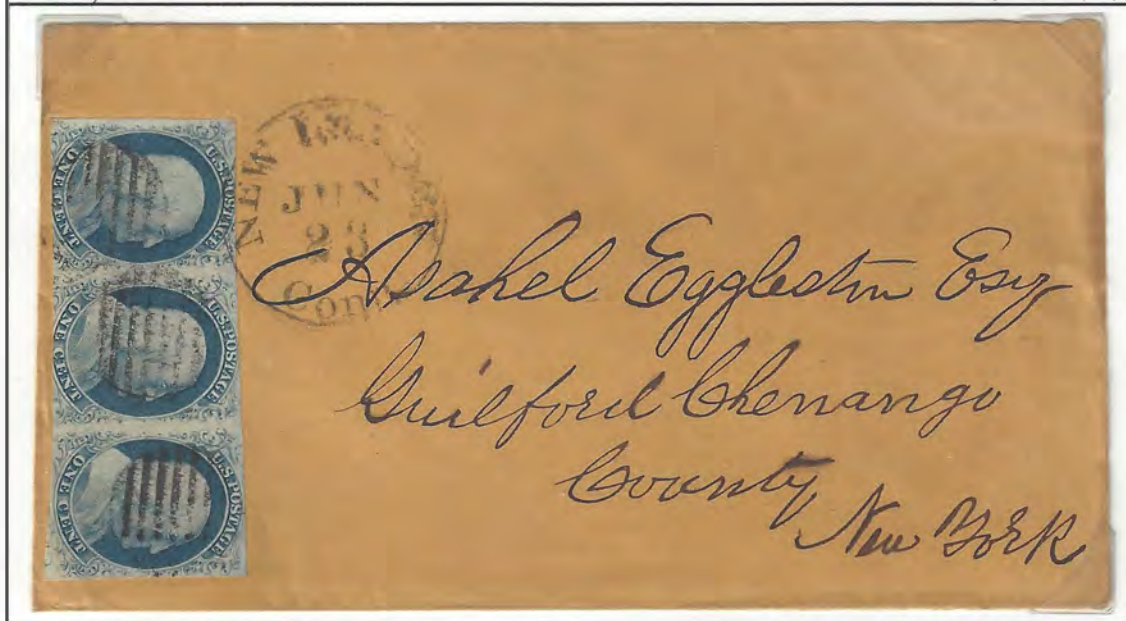


7 BAR GRID  
 18 MM  
 RED  
 E: 1850 JULY 1  
 L: 1851 JULY 22  
 GREEN  
 E:  
 L:  
 BLACK  
 E: 1853  
 L: 1862 AUGUST 30

NEW LONDON Conn.  
 30MM CDS  
 RED  
 E: 1841 SEPTEMBER 7  
 L: 1851 AUGUST 11  
 ULTRAMARINE  
 E: 1841 NOVEMBER 9  
 L: 1841  
 GREEN  
 E: 1852 MAY 24  
 L: 1852 SEPTEMBER 19  
 BLACK  
 E: 1853 JULY 11  
 L: 1855 FEBRUARY 12  
 1856 AUG 20

<sup>539</sup>  
JUNE 23, 1854

SCOTT # 9 x 3



ACT OF MARCH 3, 1851  
 FROM AND AFTER JUNE 30, 1851  
 SINGLE LETTER RATE 1/2 ¢.  
 NOT EXCEEDING 3,000 MILES PREPAID -- 3 CENTS  
 IF NOT PREPAID ----- 5 CENTS



# NEW LONDON

1851 ISSUE  
SCOTT # 11



7 BAR GRID  
 18 MM  
 RED  
 E: 1850 JULY 1  
 L: 1851 JULY 22  
 GREEN  
 E:  
 L:  
 BLACK  
 E: 1853  
 L: 1862 AUGUST 30



NEW LONDON Conn.  
 30MM CDS  
 RED  
 E: 1841 SEPTEMBER 7  
 L: 1851 AUGUST 11  
 ULTRAMARINE  
 E: 1841 NOVEMBER 9  
 L: 1841  
 GREEN  
 E: 1852 MAY 24  
 L: 1852 SEPTEMBER 19  
 BLACK  
 E: 1853 JULY 11  
 L: 1855 AUGUST 20

AUGUST 20, 1856



ACT OF MARCH 3, 1851  
 FROM AND AFTER JUNE 30, 1851  
 SINGLE LETTER RATE 1/2 OZ.  
 NOT EXCEEDING 3,000 MILES PREPAID . . . 4 CENTS  
 IF NOT PREPAID . . . . . 5 CENTS

# NEW LONDON

FORWARDED  
MOURNING COVER

NEW LONDON Ct.  
 33MM CDS  
 RED  
 E: 1850 DECEMBER 10  
 L: 1851 JULY 5  
 GREEN  
 E: 1851 OCTOBER 14  
 L: 1852 OCTOBER 5  
 BLACK  
 E: 1854 APRIL 10  
 L: 1855 AUGUST 11  
 1856 SAN C.



AUGUST 25, 1854>



INITIALLY POSTED AT NEW LONDON, TO BIRMINGHAM, CT, REMAILED FROM BRIDGEPORT.

ACT OF MARCH 3, 1851  
 FROM AND AFTER JUNE 30, 1851  
 SINGLE LETTER RATE 1/2 OZ.  
 NOT EXCEEDING 3,000 MILES PREPAID -- 3 CENTS  
 IF NOT PREPAID ----- 5 CENTS

# NEW LONDON

## VALENTINE ENVELOPE

NEW LONDON CT.  
 33MM CDS M/D/Y  
 RED  
 E: 1859 FEBRUARY 15  
 L:  
 BLACK(BROKEN OUTER RIM)  
 E: 1859  
 L: 1862 JANUARY 21



FEBRUARY 15, 1859

SCOTT # 26



11 BLADE  
 18MM  
 BLACK  
 E: 1859 FEBRUARY 15  
 L: 1862 JANUARY 21



N. D. SMITH  
MANUFACTURER  
NEW LONDON, CT.

J. Starr Kolloray Esq  
Philadelphia,  
Pa.

# NEW LONDON

OCTOBER 4, 1858

SCOTT # 26



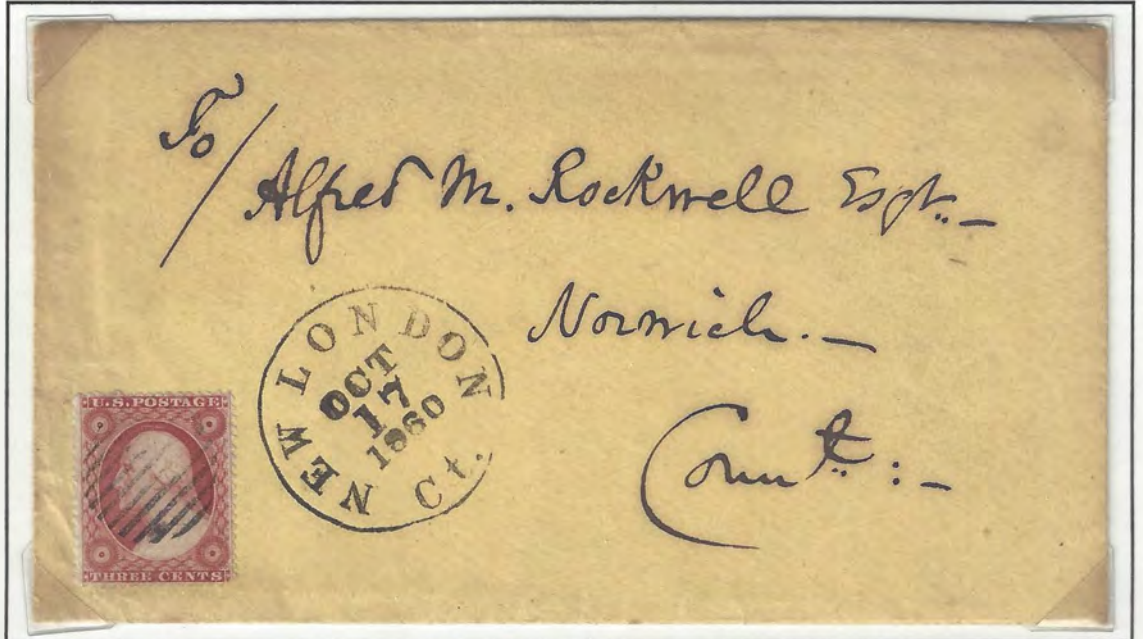
NEW LONDON CT.  
33MM CDS M/D/Y  
RED  
E: 1859 FEBRUARY 15  
L:  
BLACK (BROKEN OUTER RIM)  
E: 1859 OCTOBER 4 21  
L: 1862 JANUARY 21

OCTOBER 17, 1860

SCOTT # 26



11 BLADE  
18MM  
BLACK  
E: 1859 FEBRUARY 15  
L: 1862 JANUARY 21



# NEW LONDON

MISSENT AND FORWARDED

MAY 31, 1860

SCOTT # 24 x3 & # 26



NEW LONDON Ct. M/D/Y  
 33mm CDS (BROKEN RIM)  
 BLACK  
 E: 1860 MAY 31  
 L: 1861 AUGUST 24

POSTED IN NEW LONDON AND MIS-ADDRESSED TO HARTFORD, AN ADDITIONAL THREE CENT STAMP WAS ADDED AT HARTFORD WHEN LETTER WAS FORWARDED TO NORWICH.

DOUBLE RATE

OCTOBER 10, 1860

SCOTT # 26 x2



# NEW LONDON

NEW LONDON C.T.  
 33MM CDS M/D/Y  
 RED  
 E: 1859 FEBRUARY 15  
 L:  
 BLACK (BROKEN OUTER RIM)  
 E: 1859 OCTOBER 4  
 L: 1862 JANUARY 21



**ERASTUS W. SMITH  
 ENGINEER  
 NEW YORK**

JANUARY 11, 1861

SCOTT # 26



7 BAR CIRCLE  
 18MM  
 RED  
 E: 1850 JULY 1  
 L: 1851 JULY 22  
 GREEN  
 E:  
 L:  
 BLACK  
 E: 1854 JUNE 23  
 L: 1862 OCTOBER 5

# NEW LONDON

AUGUST 24, 1861

SCOTT # 26



NEW LONDON Ct.  
 33MM CDS M/D/Y  
 RED  
 E: 1859 FEBRUARY 15  
 L:  
 BLACK  
 E: 1859  
 L: 1862 JANUARY 21

JANUARY 21, 1862

SCOTT # 65



11 BLADE  
 18MM  
 BLACK  
 E: 1859 FEBRUARY 15  
 L: 1862 JANUARY 21  
 M15 n 22



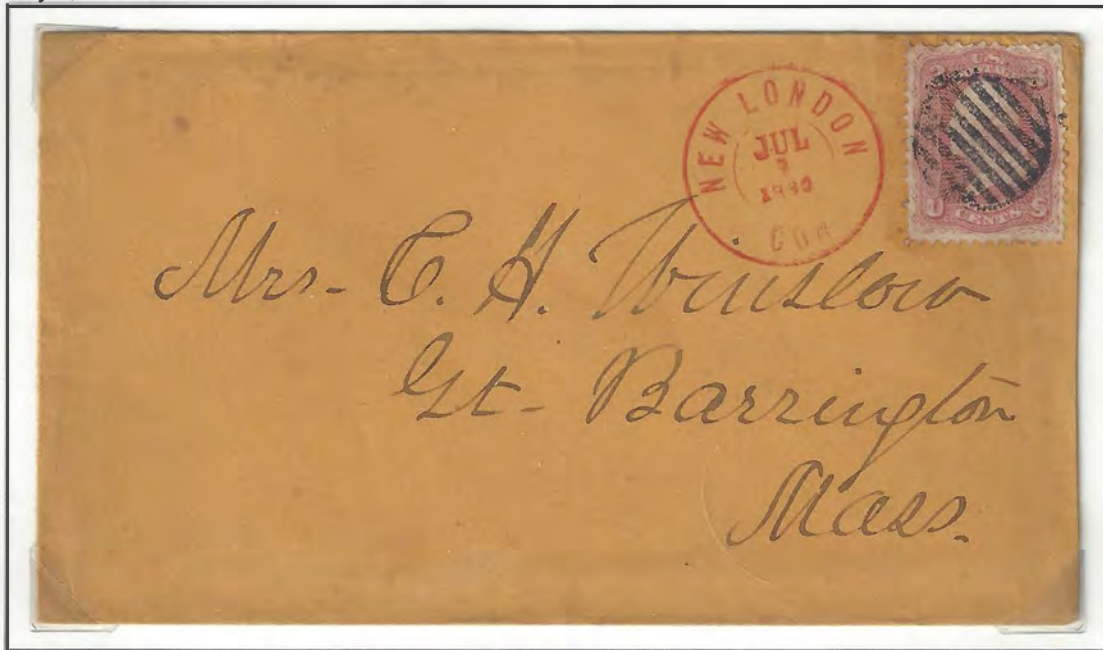


# NEW LONDON



July 1, 1862

SCOTT # 65



NEW LONDON CON  
 26MM DC  
 RED  
 E: 1862 MAY 30  
 L: 1862 AUGUST 30  
 BLACK  
 E: 1862 OCTOBER 5  
 L: 1866 DECEMBER 29



May 20, 1862

SCOTT # 65x2

7 BAR GRID  
 17MM  
 RED  
 E: 1850 JULY 1  
 L: 1851 JULY 22  
 BLACK  
 E: 1855 JANUARY 6  
 L: 1863 MAY 7





Mrs. James. H. Eddy  
New Britain  
Conn



Mrs. James. H. Eddy  
New Britain  
Conn

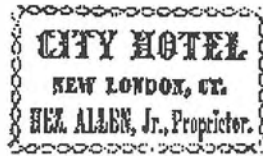
# NEW LONDON



7 BAR GRID  
17MM  
BLACK  
E: 1861 JANUARY 11  
L: 1863 MAY 7



NEW LONDON CON  
26MM DC  
RED  
E: 1862 MAY 30  
L: 1862 AUGUST 30  
BLACK  
E: 1862 OCTOBER 5  
L: 1866 DECEMBER 29



August 30, 1862





3

FORWARDED

Mr. J. C. Richardson



"Milford"

W. H. ...

Care of Geo. D. Washer, Esq. 1862

# NEW LONDON

NEW LONDON CON  
 M/D/Y  
 26MM DC  
 RED  
 E: 1862 MAY 20  
 L: 1862 AUGUST 30  
 BLACK  
 E: 1863 MAY 7  
 L: 1866 AUGUST 2



MAY 15, 1863

SCOTT # 65



STAR OUTLINE  
 ~23MM  
 BLACK  
 E: 1863 MAY 15  
 L:

JULY 1, 1863

SCOTT # 65



X NEGATIVE  
 ~21MM  
 BLACK  
 E: 1863 JULY 15  
 L: 1863 JULY 20  
 OCT 8





Mr. D. G. Willard

Millmantie

Mr. D. G. Willard  
Cuba, 15-1863

\*

# NEW LONDON



WEDGE FOUR  
(NARROR CUT)  
18MM

BLACK *JANUARY 30*  
E: 1864 ~~FEBRUARY 5~~  
L: 1864 *February 5*

\*



NEW LONDON CON  
M/D/Y  
26MM DC  
RED  
E: 1862 MAY 20  
L: 1862 AUGUST 30  
BLACK  
E: 1863 JANUARY 30  
L: 1866 AUGUST 2

FEBRUARY 5, 1864

SCOTT # 65



# NEW LONDON

MISSENT AND FORWARDED

SEPTEMBER 9, 1864

SCOTT # 65



NEW LONDON CON  
 M/D/Y  
 26MM DC  
 RED  
 E: 1862 MAY 20  
 L: 1862 AUGUST 30  
 BLACK  
 E: 1863 MAY 7  
 L: 1866 AUGUST 2



WEDGE FOUR  
 ~18MM  
 BLACK  
 E: 1864 SEPTEMBER 9  
 L: 1865 OCTOBER 1

POSTED IN NEW LONDON AND MISADDRESSED TO EAST LYME, WHERE IT WAS STAMPED DUE/3, WHICH HAD TO BE PAID BY THE RECIPIENT FOR FORWARDING THE LETTER TO NIAN TIC.

AUGUST 21, 1865

SCOTT # 65

## MISSENT

MISSENT  
 30X4MM  
 BLACK  
 E: 1865 AUGUST 21  
 L:



LETTER SENT FROM OLD POINT COMFORT VA. TO STERLING VA .. THE STATE OF DESTINATION WAS MISREAD BY THE POST OFFICE AND SENT TO NEW LONDON, WHERE MISSENT WAS APPLIED. NO ADDITIONAL POSTAGE WAS CHARGE TO FORWARD THIS LETTER.



# NEW LONDON

FEBRUARY 13, 1865

DROP RATE

SCOTT # 73



WEDGE FOUR  
 ~18MM  
 BLACK  
 E: 1864 SEPTEMBER 9  
 L: 1865 OCTOBER 1



NEW LONDON CON  
 M/D/Y  
 26MM DC  
 RED  
 E: 1862 MAY 20  
 L: 1862 AUGUST 30  
 BLACK  
 E: 1863 MAY 7  
 L: 1866 AUGUST 2

AUGUST 29, 1865

SCOTT # 65





65  
J. William Patterson Esq.  
Newark Valley  
N. York

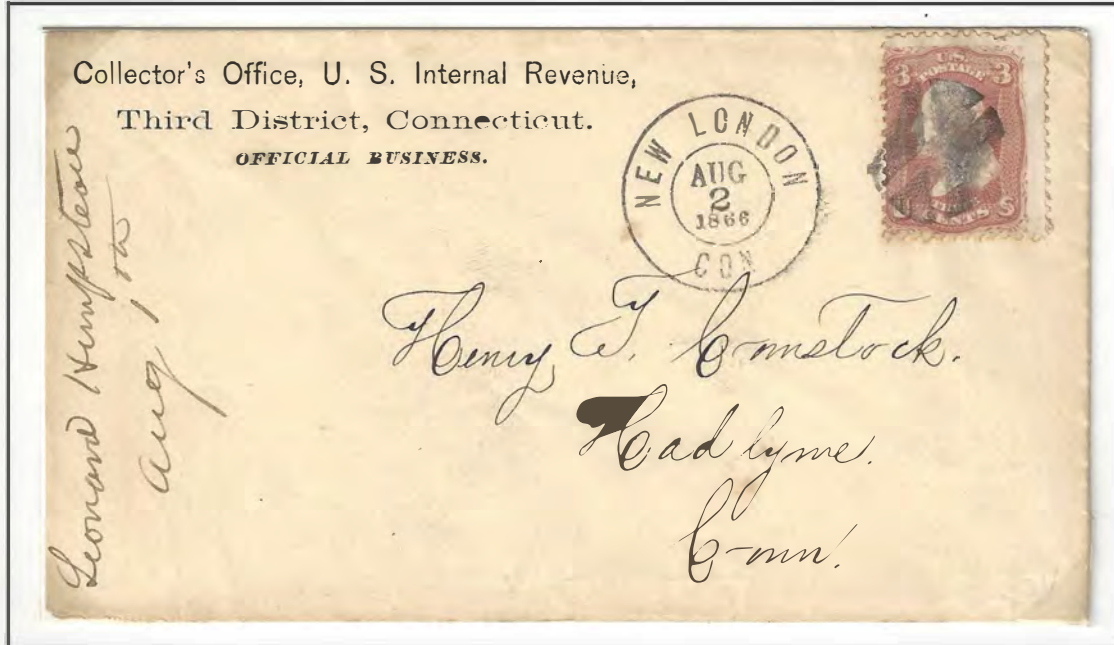
# NEW LONDON



AUGUST 2, 1866

SINGLE RATE

Scott # 65



NEW LONDON CON  
M/D/Y  
26MM DC  
RED  
E: 1862 MAY 20  
L: 1862 AUGUST 30  
BLACK <sup>2025</sup>  
E: 1863 MAY 7  
L: 1866 AUGUST 29



X INDENTED  
15x19MM  
BLACK  
E: 1866 <sup>may 4</sup> AUGUST 2  
L: 1866 ~~Nov 8~~ ~~Jan 19~~ Feb

AUGUST 2, 1866

DOUBLE RATE

Scott # 65



# NEW LONDON

PATRIOTIC



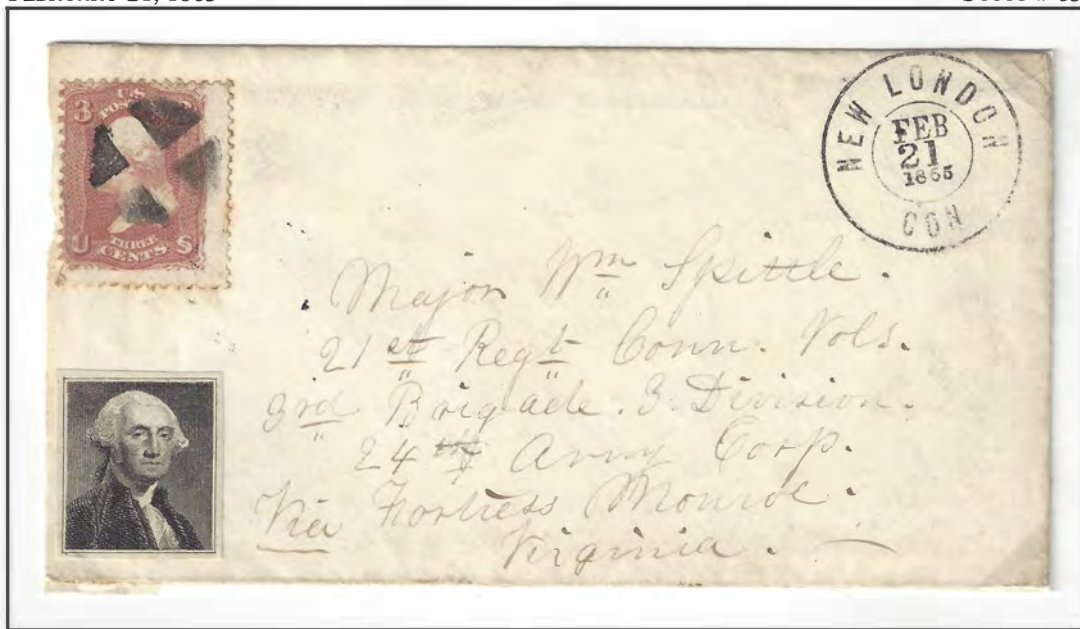
WEDGE FOUR  
(VARIOUS)  
18-20MM  
BLACK  
E: 1864 SEPTEMBER 9  
L: 1865 OCTOBER 1



NEW LONDON CON  
M/D/Y  
26MM DC  
RED  
E: 1862 MAY 20  
L: 1862 AUGUST 30  
BLACK  
E: 1863 MAY 7  
L: 1866 AUGUST 2

FEBRUARY 21, 1865

SCOTT # 65



# NEW LONDON

WESTERN UNION TELEGRAPH COMPANY



MARCH 4, 1867



## THE WESTERN UNION TELEGRAPH COMPANY.

The rules of this Company require that all messages received for transmission, shall be written on the message blanks of this Company, under and subject to the conditions printed thereon, which conditions have been agreed to by the parties to the following contract.

O. H. PALMER, Sec'y.

J. H. WADE, Pres't.

1 Dated, New York March 4 1867  
 Received at New York  
 To Capt. M. C. Colecord  
Sch. Maitland

# NEW LONDON



V's EIGHT  
 ~24MM  
 BLACK  
 E: 1867 MARCH 22  
 L: 1867 ~~JULY 22~~  
 AUG 19



NEW LONDON CON  
 M/D  
 26MM DC  
 BLACK  
 E: 1867 ~~MARCH 22~~ JAN 21  
 L: 1867 ~~JULY 22~~  
 AUG 19

MARCH 22, 1867

SCOTT U-59, 65 x2

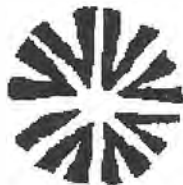


POSTMARKED: BALTIMORE MD., MARCH 20

SINGLE RATE OF POSTAGE BEYOND PORT OF ARRIVAL -- 6 CENTS

THIS LETTER ARRIVED IN BALTIMORE BY STEAMBOAT ON 20 MARCH 1867. THE POST OFFICE APPLIED THE BALTIMORE TOWNMARK AND CANCELED THE STAMPED ENVELOPE. THEY ALSO ADDED THE STEAMBOAT AND DUE/3 MARKINGS. THE LETTER ARRIVED IN NEW LONDON AT THE POST OFFICE ON 22 MARCH. TWO 3 CENT STAMPS WERE ADDED, ONE FOR THE DUE THE OTHER TO PREPAY THE FORWARDING TO GREAT BARRINGTON.

# NEW LONDON



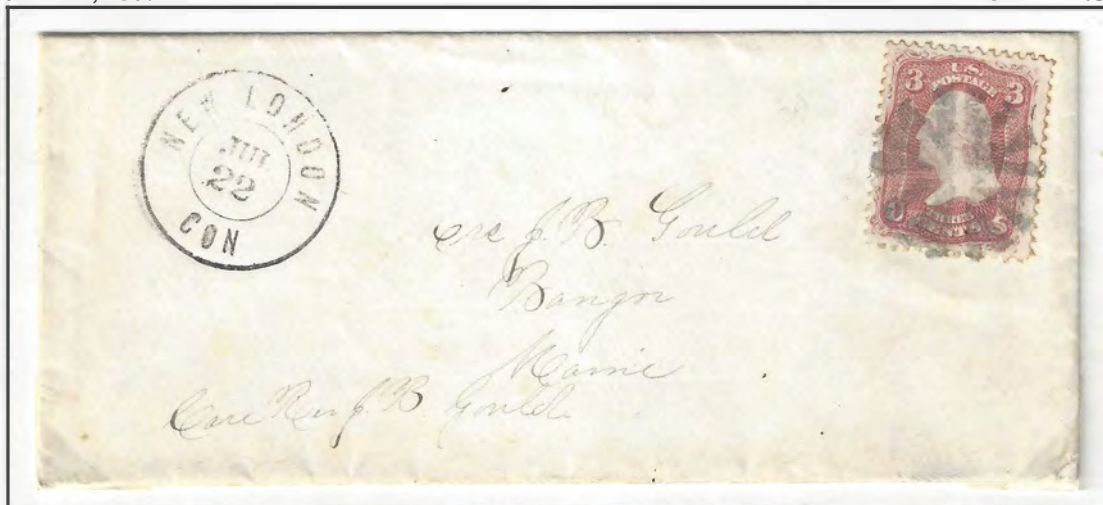
V's EIGHT  
~24MM  
BLACK  
E: 1867 JULY 22  
L: 186



NEW LONDON CON  
M/D  
26MM DC  
BLACK  
E: 1867 JULY 22  
L: 186

JULY 22, 1867

SCOTT # 65



# NEW LONDON

ULYSSES S. GRANT  
PRESIDENTIAL CAMPAIGN  
1868

NEW LONDON CON  
M/D  
26MM DC  
BLACK  
E: 1867 MARCH 22  
L: 1868 MARCH 1



FEBRUARY 1, 1868



WEDGE FOUR  
~18MM  
BLACK  
E: 1864 SEPTEMBER 9  
L: 1868 FEBRUARY 1





Mr. Frank. Vein Mess,  
In Care of C. V. N. Landon.  
Chatham Centre.  
Columbia County  
New York.

# NEW LONDON

UNITED STATES INTERNAL REVENUE  
4TH DIVISION, 3RD DISTRICT, NEW LONDON  
ANNUAL TAXES, MARCH, 1870

24.



UNITED STATES INTERNAL REVENUE.

ANNUAL TAXES, MARCH, 1870.

To Wm. S. Palmer  
of Stonington, in  
the 4<sup>th</sup> Division 3<sup>d</sup> District,  
and State of Conn.

## TAKE NOTICE

That, in pursuance of the acts of Congress, you are required to make out a Return according to the forms within, as far as the same may be applicable to your case, and deliver the same to me, at my office, WITHIN TEN DAYS FROM THE DATE HEREOF, or an addition of FIFTY PER CENTUM will be made to the proper tax.

Dated this \_\_\_\_\_ day of \_\_\_\_\_, 1870.

E. V. Stoddard  
Assistant Assessor.

OFFICE at No. 31 State St.  
Stonington



*Supplies of Phelps & Co  
Providence Co  
Phelps & Co*



REGISTERED

*10/14 =*

*W. Watson 2nd  
Syllymouth  
Prodd.*



# NEW LONDON

RAILROAD

NEW LONDON NORTHERN

AUGUST 11, 1860,s

NEW LONDON AND NORTHERN



N. LON. & NORTN. R.R.  
26mm CDS  
Black 1861 -

July 8, 1870,s

NORTHERN BRANCH NEW LONDON NORTHERN



NO. BR. NL. N. R.R.  
26mm CDS  
Black 1870 -



The New London Northern succeeded the New London Willimantic and Palmer in 1860.  
In 1871 this line was leased to the Central Vermont Railway.



Mrs. Geo. Bushnell

Beloit

Wis.

# NEW LONDON

RAILROAD

NEW LONDON NORTHERN

April 1, 1870,s

0113



ADVERTISEMENT NEW LONDON NORTHERN RAILROAD



NEW LONDON CT.  
26.5mm CDS  
Black 1870 -

*Faint, illegible text at the top of the page.*

*Faint, illegible text below the first block.*



Early 1870 circa

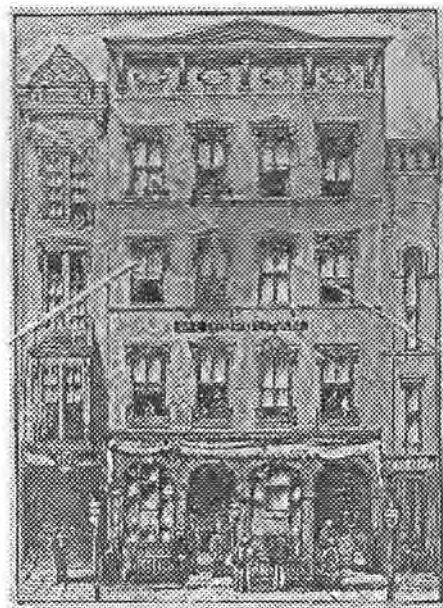


Mrs. W. Hill -  
Stonington -  
Conn.

# NEW LONDON

## METROPOLITAN HOTEL

APRIL 15, 1884



ON BACK



# NEW LONDON

W. R. PERRY

APRIL 4, 1888

SCOTT # 213

**RICHARDSON'S** Celebrated **SAWS** ESTABLISHED 1860

**R-8 HAND SAW.**

Our New Improved **R-8 HAND SAW** is the **LIGHTEST HANGING SAW IN THE HAND.** HANDLE, with additional fifth rivet, is strongest where other handles break. Blade is ground thin to back, requiring very little set. **The Richardson Saws** are unequalled for fine temper and workmanship.

This Handle will not break. Handles usually break here.

**W. R. PERRY, NEW LONDON, CONN.**

*Mrs. Asenath Hall Tucker  
North Manchester Conn*

## RICHARDSON BROS.,

Manufacturers of

# SAWS

of every  
DESCRIPTION.

Hand, Panel,  
Rip, Back, Compass,  
Key-Hole, Kitchen  
& Butcher  
**SAWS.**  
Plastering  
Trowels.



Circular,  
Mill, Mulay, Drag,  
Pit, Cross-Cut  
& Wood  
**SAWS.**  
Turning  
Webs.