

BRISTOL



V (Double circle)
18mm
Blue 1847 -



BRISTOL Ct.
30mmCDS
Blue 1847 -

JUNE 18, 1847

SINGLE RATE

UNDER 300 MILES



ACT OF MARCH 3, 1845
EFFECTIVE JULY 1, 1845
PRE-PAID OR NOT
UNDER 300 MILES -- 5 CENTS
OVER 300 MILES -- 10 CENTS

BURLINGTON

POSTAGE
ACT OF MARCH 2, 1799
DOUBLE POSTAGE RATE
COLLECT
150 TO 300 MILES

34

*Burlington Ct
April 14th*

APRIL 14, 1812



DATED: BRISTOL, APRIL 4TH 1812
JOEL TRUESDELL

ACT OF MARCH 2, 1799
EFFECTIVE MARCH 2, 1799

NOT OVER 40 MILES	----	8 CENTS
40 TO 90 MILES	-----	10 CENTS
90 TO 150 MILES	--	12 1/2 CENTS
150 TO 300 MILES	-----	17 CENTS
300 TO 500 MILES	----	20 CENTS
OVER 500 MILES	-----	25 CENTS

POST OFFICE ESTABLISHED:
1808 OCTOBER 1
EARLIEST KNOWN USE

BURLINGTON

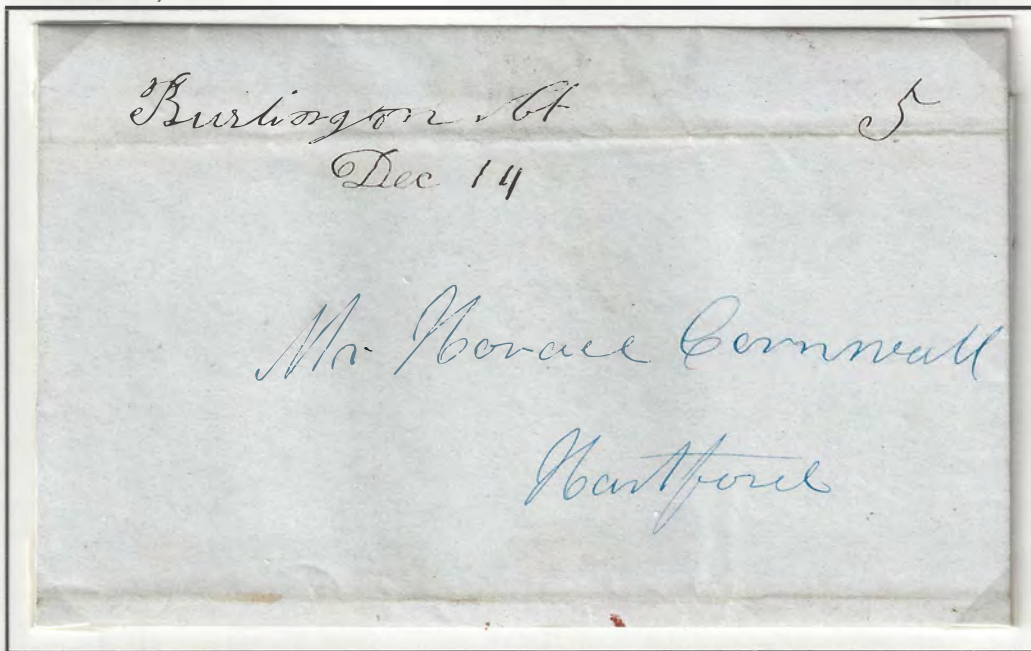
J

*Burlington Ct
Dec. 14*

DECEMBER 14, 1848

SINGLE RATE

UNDER 300 MILES



ACT OF MARCH 3, 1845
 EFFECTIVE JULY 1, 1845
 PRE-PAID OR NOT
 UNDER 300 MILES -- 5 CENTS
 OVER 300 MILES -- 10 CENTS

EAST BERLIN



PAID/3
18mm
Black 1852 -



EAST BERLIN Ct.
29mmCDS
Black 1852 -

MAY 10, 1852> PREPAID
SINGLE RATE NOT EXCEEDING 3000 MILES



Act of March 3, 1851
From and after June 30, 1851
Single Letter Rate 1/2 oz.
Not exceeding 3,000 miles prepaid -- 3 Cents
If not prepaid ----- 5 Cents

EAST GRANBY



E. GRANBY Ct.
31mmCDS
Black 1855 -

Paiz

FEBRUARY 20, 1855

PREPAID
SINGLE RATE

NOT EXCEEDING 3000 MILES



Act of March 3, 1851
From and after June 30, 1851
Single Letter Rate 1/2 oz.
Not exceeding 3,000 miles prepaid - - 3 Cents
If not prepaid ----- 5 Cents

EAST WINDSOR

~~Robertville S.C.~~
1821

NOVEMBER 1, 1821

SINGLE RATE

OVER 400 MILES



EAST WINDSOR. CON.
28mmCDS
Red 1821 - 1826



Posted at Robertville S.C. to East Windsor Ct. at 25 cts., returned TO ROBERTVILLE FROM EAST WINDSOR FOR AN ADDITIONAL 25 CTS..

25
25
50

PAID

PAID
16x4mm
Red 1826 -

10

JUNE 25, 1826

PREPAID
SINGLE RATE

30 TO 80 MILES



ACT OF APRIL 9, 1816
EFFECTIVE MAY 1, 1816
NOT OVER 30 MILES ---- 6 CENTS
30 TO 80 MILES ----- 10 CENTS
80 TO 150 MILES -- 12 1/2 CENTS
150 TO 400 MILES -- 18 1/2 CENTS
OVER 400 MILES ----- 25 CENTS
ACT OF MARCH 3, 1825
EFFECTIVE MAY 1, 1825
150 TO 400 MILES -- 18 3/4 CENTS

FARMINGTON

FARMINGTON CT.

OCT. 15.

PAID

PAID
12x3mm
Black 1829 -

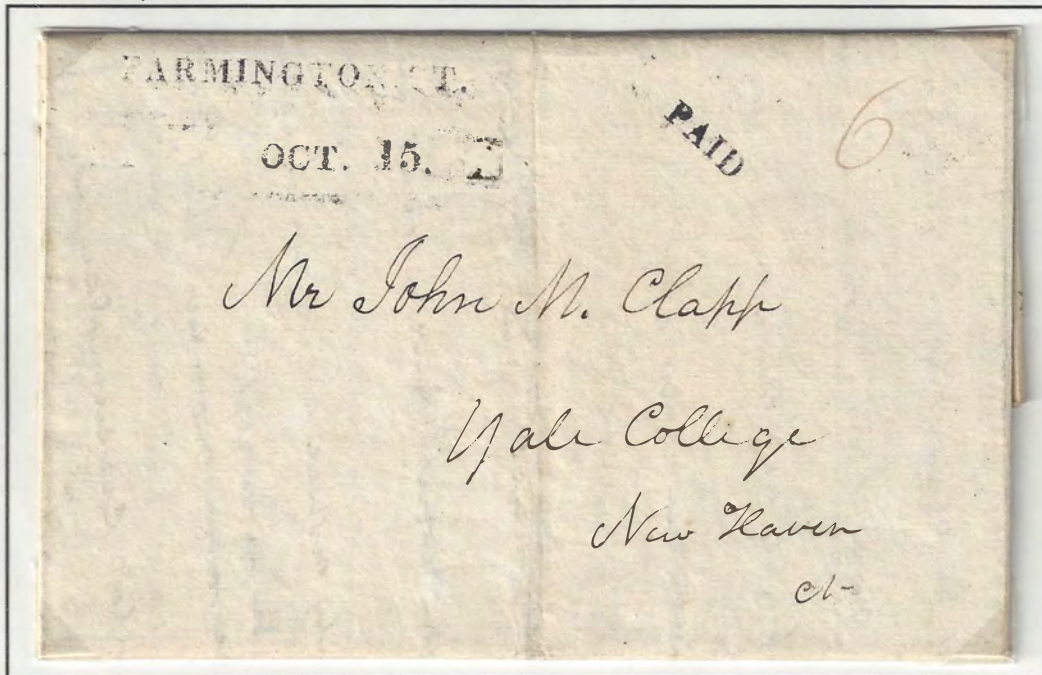
6.

FARMINGTON. CT.
45x3mm
Black 1829 -

OCTOBER 15, 1829

SINGLE RATE

NOT OVER 30 MILES



ACT OF APRIL 9, 1816
EFFECTIVE MAY 1, 1816
NOT OVER 30 MILES ----- 6 CENTS
30 TO 80 MILES ----- 10 CENTS
80 TO 150 MILES -- 12 1/2 CENTS
150 TO 400 MILES -- 18 1/2 CENTS
OVER 400 MILES ----- 25 CENTS
ACT OF MARCH 3, 1825
EFFECTIVE MAY 1, 1825
150 TO 400 MILES -- 18 3/4 CENTS

GRANBY

PAID

3



PAID
20x8mm
Black 1851 -

3
5x8mm
Black 1851 -

GRANBY CONN.
30mmCDS
Black 1851 -

NOVEMBER 19, 1851>

PREPAID
SINGLE RATE

NOT EXCEEDING 3000 MILES



Act of March 3, 1851
From and after June 30, 1851
Single Letter Rate 1/2 oz.
Not exceeding 3,000 miles prepaid -- 3 Cents
If not prepaid ----- 5 Cents

KENSINGTON

MARCH 26, 1840

SINGLE RATE

150 TO 400 MILES



KENSINGTON CT
 30mmCDS
 Red 1842 -
 Brick 1846 -

LETTER RE-RATED AT FRANCONIA N.H.



ACT OF APRIL 9, 1816
 EFFECTIVE MAY 1, 1816
 NOT OVER 30 MILES ---- 6 CENTS
 30 TO 80 MILES ----- 10 CENTS
 80 TO 150 MILES -- 12 1/2 CENTS
 150 TO 400 MILES -- 18 1/2 CENTS
 OVER 400 MILES ----- 25 CENTS
 ACT OF MARCH 3, 1825
 EFFECTIVE MAY 1, 1825
 150 TO 400 MILES -- 18 3/4 CENTS

JUNE 3, 1846

SINGLE RATE

UNDER 300 MILES

5

5
 7x10mm
 Brick 1846 -



ACT OF MARCH 3, 1845
 EFFECTIVE JULY 1, 1845
 PRE-PAID OR NOT
 UNDER 300 MILES -- 5 CENTS
 OVER 300 MILES -- 10 CENTS

KETCH MILLS

Pair 6-6

*Post Office
May 12*

JANUARY 12, 1829

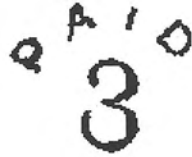
SINGLE RATE

NOT OVER 30 MILES



ACT OF APRIL 9, 1816
 EFFECTIVE MAY 1, 1816
 NOT OVER 30 MILES ---- 6 CENTS
 30 TO 80 MILES ----- 10 CENTS
 80 TO 150 MILES -- 12 1/2 CENTS
 150 TO 400 MILES -- 18 1/2 CENTS
 OVER 400 MILES ----- 25 CENTS
 ACT OF MARCH 3, 1825
 EFFECTIVE MAY 1, 1825
 150 TO 400 MILES -- 18 3/4 CENTS

NORTH GRANBY



PAID/3
24x19
Red 1852 -



NORTH - GRANBY C ON
32mmCDS
Red 1852 -

FEBRUARY 26, 1852 PREPAID SINGLE RATE NOT EXCEEDING 3000 MILES



Act of March 3, 1851
From and after June 30, 1851
Single Letter Rate 1/2 oz.
Not exceeding 3,000 miles prepaid - - 3 Cents
If not prepaid ----- 5 Cents

ROCKY HILL



Connecticut

Sterling

Connecticut Currency Stampless Letter

1791 October 1



Dated: Rocky Hill 1 October 1791, from James Stanley

Congress by Resolution of 20 October 1787
Effective: 5 April 1788

0 to 0 miles 1 dwt Sterling, Prepaid or not.

1 dwt Sterling = 3d (pence Sterling) = 4d (pence Connecticut)

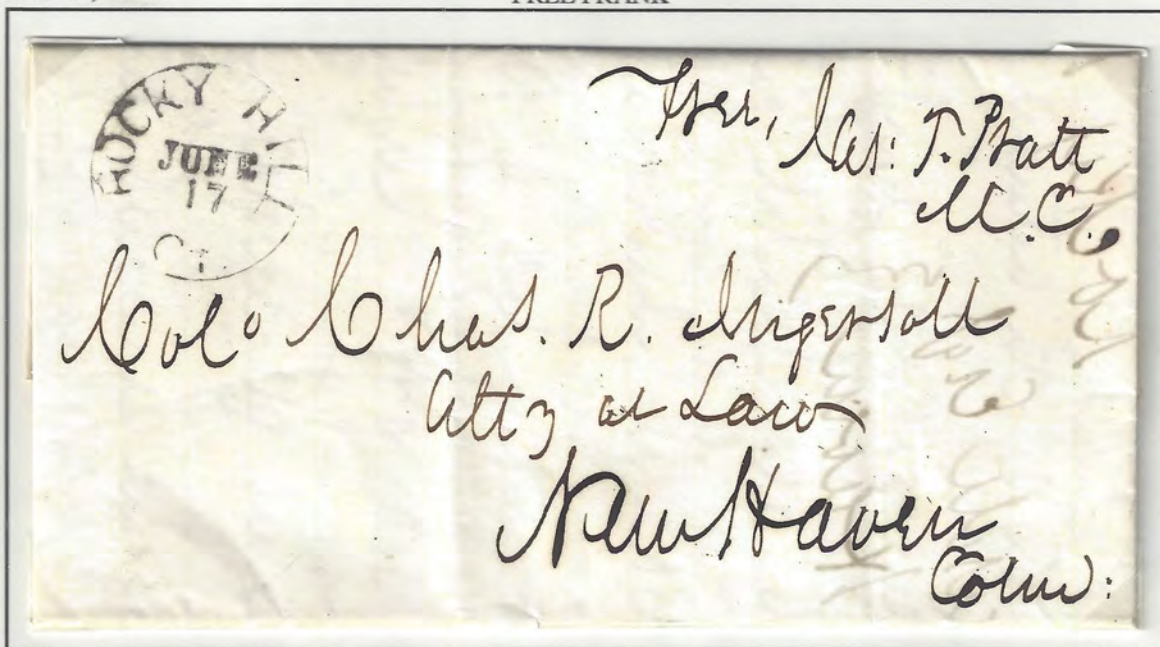
ROCKY HILL



ROCKY HILL CT.
29mmCDS
Black 1847 - 1853

¹⁸⁵³
JUNE 17, 1847

MEMBER OF CONGRESS
FREE FRANK



Gen. Jas: T. Pratt
U.C.

SCANTICK

5-

Scantick
Sept-13

SEPTEMBER 13, 1845

SINGLE RATE

UNDER 300 MILES



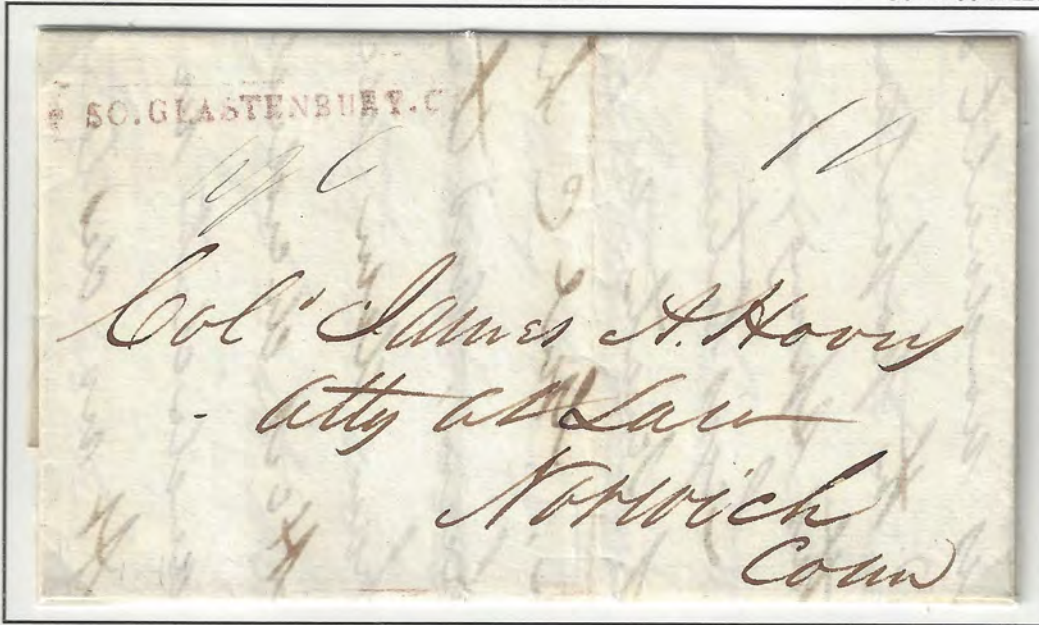
ACT OF MARCH 3, 1845
 EFFECTIVE JULY 1, 1845
 PRE-PAID OR NOT
 UNDER 300 MILES -- 5 CENTS
 OVER 300 MILES -- 10 CENTS

SOUTH GLASTONBURY

APRIL 6, 1844

SINGLE RATE

30 TO 80 MILES



SO. GLASTENBURY, CT

SO. GLASTENBURY, CT
50x3mm
Red 1844 -

Duffin ONLY cover documented with FULL SOUTH

SOUTH. GLASTENBURY, CT

Sep 14

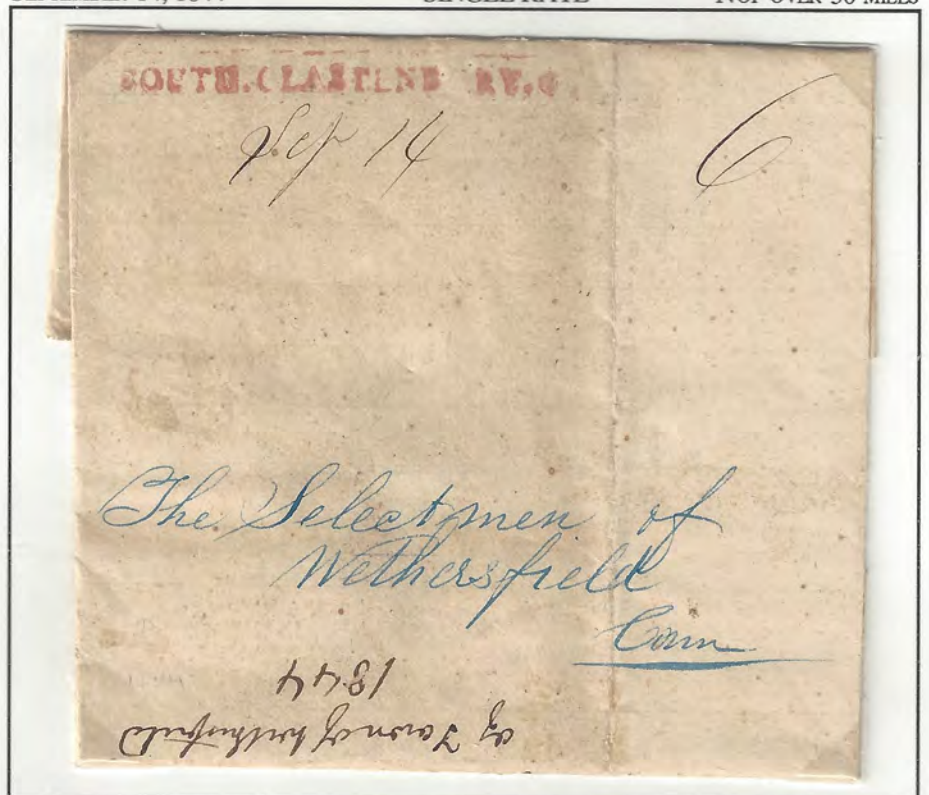
SEPTEMBER 14, 1844

SINGLE RATE

NOT OVER 30 MILES

SOUTH. GLASTENBURY, CT
61x3mm SL
(U and T omitted)
Red 1844 -

C



ACT OF APRIL 9, 1816
EFFECTIVE MAY 1, 1816

NOT OVER 30 MILES	----	6 CENTS
30 TO 80 MILES	-----	10 CENTS
80 TO 150 MILES	--	12 1/2 CENTS
150 TO 400 MILES	--	18 1/2 CENTS
OVER 400 MILES	-----	25 CENTS

ACT OF MARCH 3, 1825
EFFECTIVE MAY 1, 1825

150 TO 400 MILES	--	18 3/4 CENTS
------------------	----	--------------

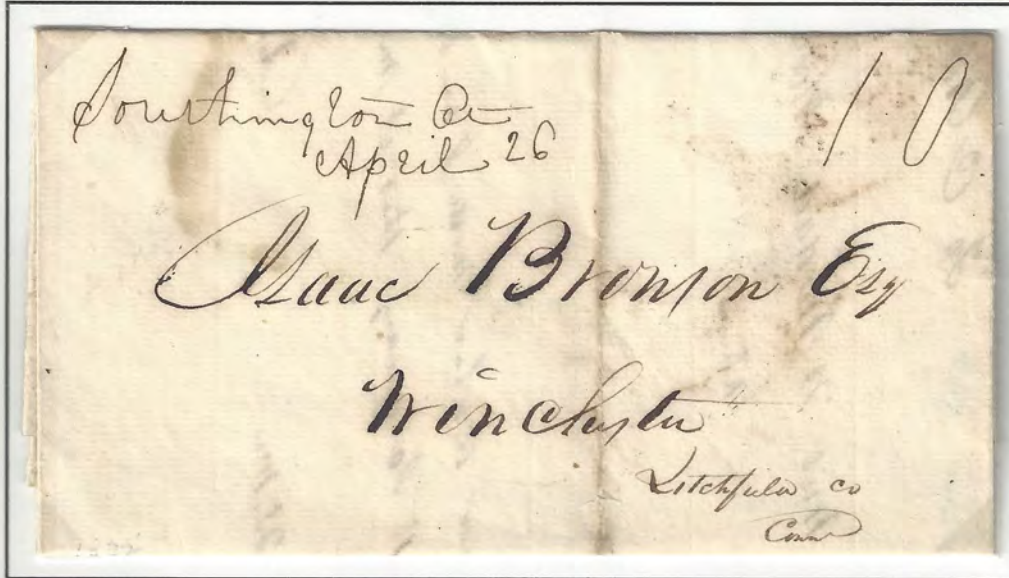
SOUTHINGTON

*Southington Ct
April 26*

APRIL 26, 1832

SINGLE RATE

30 TO 80 MILES



10

ACT OF APRIL 9, 1816
EFFECTIVE MAY 1, 1816

NOT OVER 30 MILES	----	6 CENTS
30 TO 80 MILES	-----	10 CENTS
80 TO 150 MILES	--	12 1/2 CENTS
150 TO 400 MILES	--	18 1/2 CENTS
OVER 400 MILES	-----	25 CENTS

ACT OF MARCH 3, 1825
EFFECTIVE MAY 1, 1825

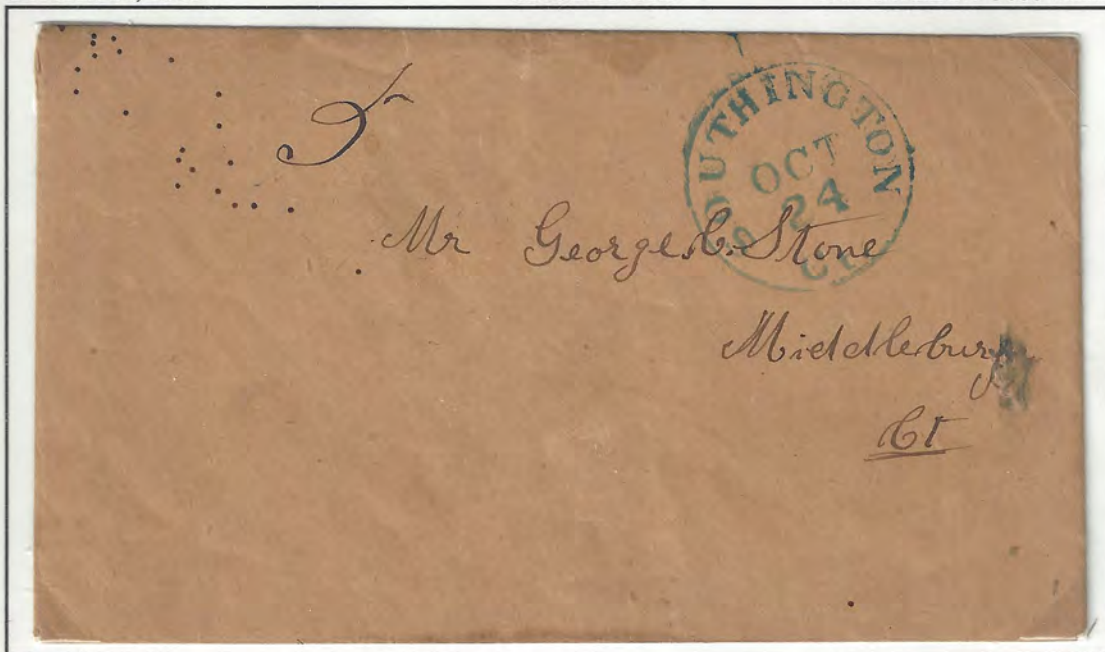
150 TO 400 MILES	--	18 3/4 CENTS
------------------	----	--------------

Act of March 3, 1851
From and after June 30, 1851
Single Letter Rate 1/2 oz.
Not exceeding 3,000 miles prepaid -- 3 Cents
If not prepaid ----- 5 Cents

OCTOBER 24, 1851>

NOT PREPAID
SINGLE RATE

NOT EXCEEDING 3000 MILES



SOUTHINGTON Ct.
30mmCDS
Blue 1851 - 1854

J

SUFFIELD
Suff^d.

Act of March 2, 1799
Effective Mach 2, 1799
QUAD RATE
with Post Master single rate reduction
"Wm Gay"

1805 May 28

Not over 40 miles . . . 8 cents : Quad rate 32 cents with 8 Cent deduction = 24Cts.



Stampless, folded letter with manuscript townmark "Suff^d.", May 28, 1805 and "Paid 24' "Wm Gay" / "P.M." from George Loomis enclosing \$268.00. The Post Master added \$20.00 of the total. The letter was rated as a Quad 32 cent letter. The Post Master was allowed a single rate free deduction which was applied.

Act of March 2, 1799
Effective March 2, 1799
Prepaid or not

Not over 40 miles	----	8 cents
40 to 90 miles	-----	10 cents
90 to 150 miles	-----	12 ½ cents
150 to 300 miles	-----	17 cents
300 to 500 miles	-----	20 cents
Over 500 miles	-----	25 cents
Ship Letter: additional	-	2 cents
Way Letter: additional	--	1 cent

SUFFIELD

Way 9

LAZY Suffield "S"

Act of March 2, 1799

Effective Mach 2, 1799

1802 January 21

Not over 40 miles . 8 cents: plus 1 cent Way fee.



Stampless folded letter with Suffield receiving rate of Way 9, from Warham Parsons, Constable of Northampton, Massachusetts, notifying Lomis that he has been awarded a Judgement in Court against Jack Hail. He also request his pay of \$2.16.

Act of March 2, 1799

Effective March 2, 1799

Prepaid or not

Not over 40 miles	----	8 cents
40 to 90 miles	-----	10 cents
90 to 150 miles	-----	12 ½ cents
150 to 300 miles	-----	17 cents
300 to 500 miles	-----	20 cents
Over 500 miles	-----	25 cents
Ship Letter: additional	-	2 cents
Way Letter: additional	--	1 cent

TARIFFVILLE

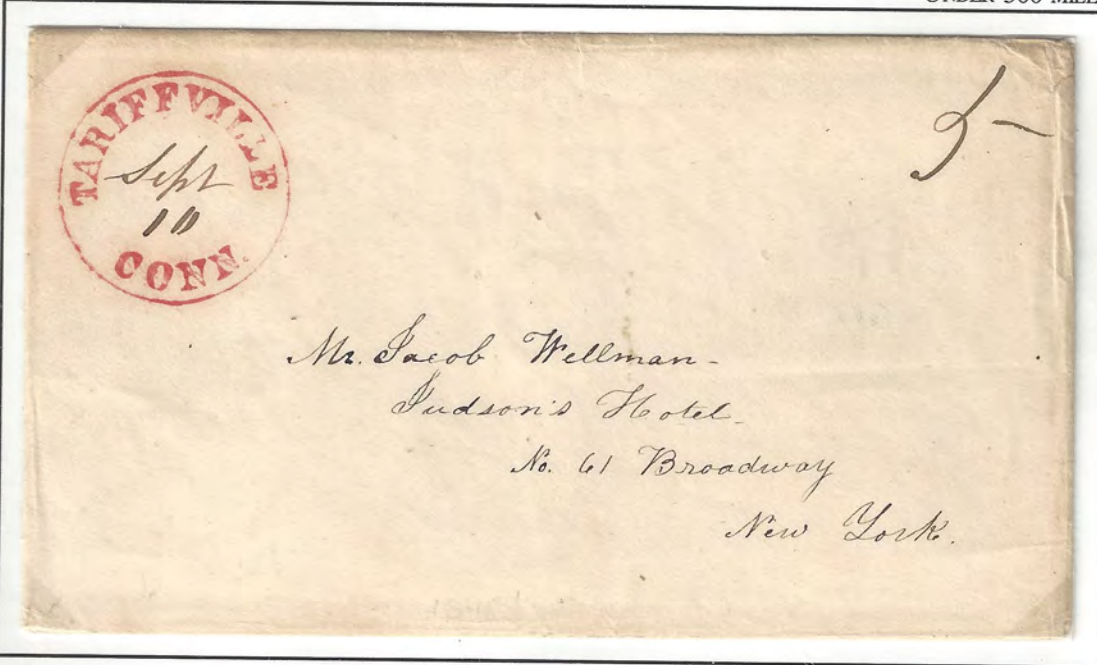
SEPTEMBER 10, 1848>

SINGLE RATE

UNDER 300 MILES



TARIFFVILLE CONN.
30mmCDS
Pink/Red 1848 - 1850



J-

ACT OF MARCH 3, 1845
EFFECTIVE JULY 1, 1845
PRE-PAID OR NOT
UNDER 300 MILES -- 5 CENTS
OVER 300 MILES -- 10 CENTS

JUNE 5, 1848

PREPAID
SINGLE RATE

OVER 300 MILES

PAID

PAID
13x4mm
Pink/Red 1848 -

10



UNIONVILLE



PAID/3
21mm
Blue 1854 -



UNIONVILLE CONN
30mmCDS
Blue 1854 -

MAY 13, 1854

PREPAID
SINGLE RATE

NOT EXCEEDING 3000 MILES



Act of March 3, 1851
From and after June 30, 1851
Single Letter Rate 1/2 oz.
Not exceeding 3,000 miles prepaid -- 3 Cents
If not prepaid ----- 5 Cents

WEST HARTFORD

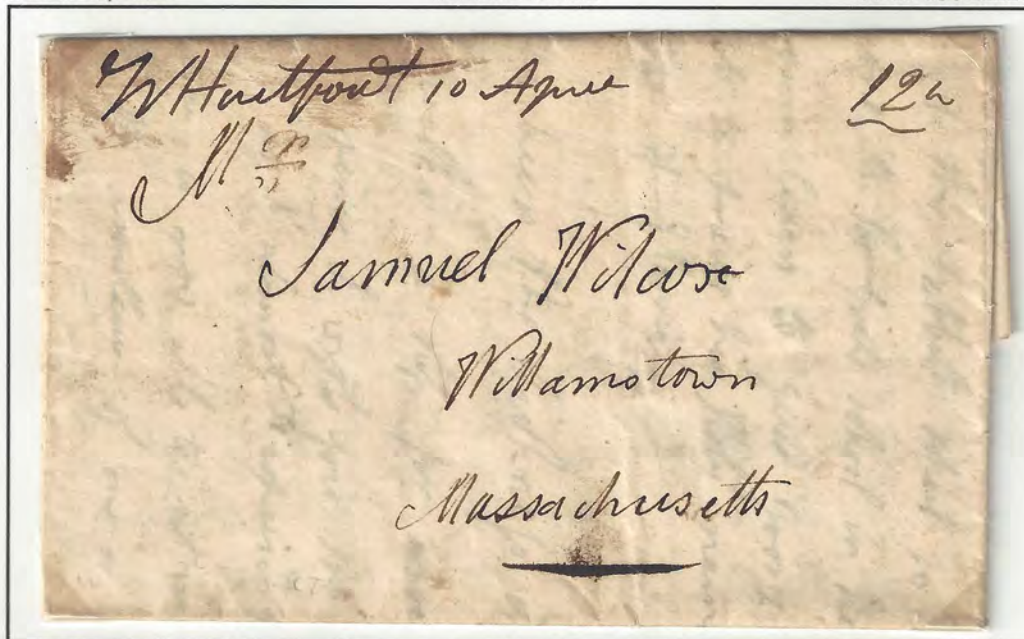
12^u

West Hartford 10 Apr 29

APRIL 10, 1829

SINGLE RATE

80 TO 150 MILES



ACT OF APRIL 9, 1816

EFFECTIVE MAY 1, 1816

NOT OVER 30 MILES ---- 6 CENTS

30 TO 80 MILES ----- 10 CENTS

80 TO 150 MILES -- 12 1/2 CENTS

150 TO 400 MILES -- 18 1/2 CENTS

OVER 400 MILES ----- 25 CENTS

ACT OF MARCH 3, 1825

EFFECTIVE MAY 1, 1825

150 TO 400 MILES -- 18 3/4 CENTS

WEST SUFFIELD

7834



WEST-SUFFIELD C T
32mmCDS
Blue 1838 - 1839

MARCH 13, 1838

SINGLE RATE

150 TO 400 MILES



ACT OF APRIL 9, 1816
EFFECTIVE MAY 1, 1816

NOT OVER 30 MILES	----	6 CENTS
30 TO 80 MILES	-----	10 CENTS
80 TO 150 MILES	--	12 1/2 CENTS
150 TO 400 MILES	--	18 1/2 CENTS
OVER 400 MILES	-----	25 CENTS

ACT OF MARCH 3, 1825
EFFECTIVE MAY 1, 1825

150 TO 400 MILES	--	18 3/4 CENTS
------------------	----	--------------

WETHERSFIELD

12 1/2

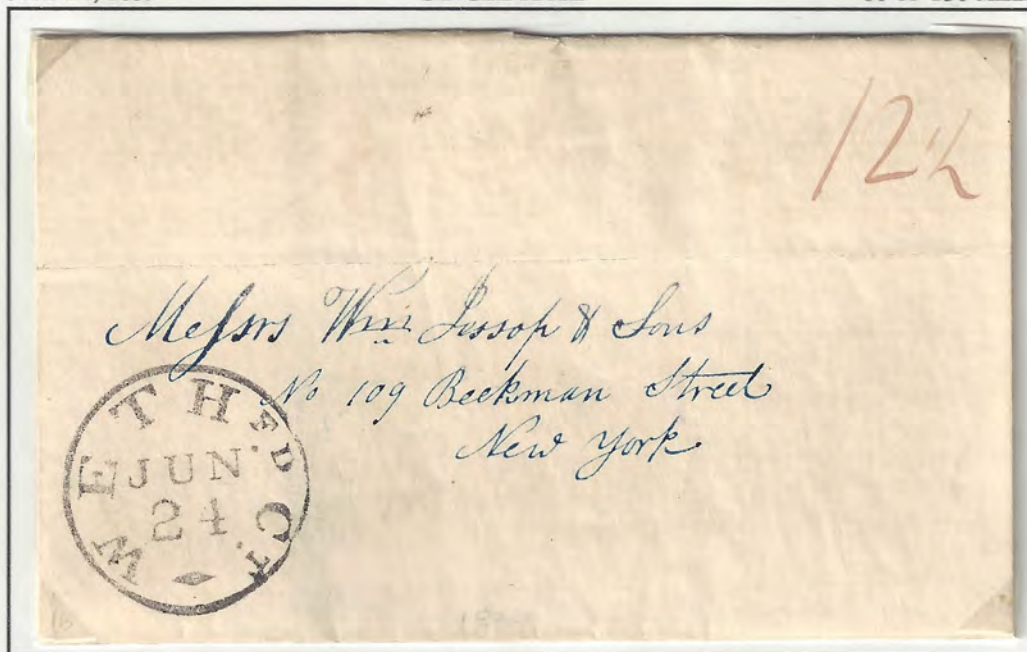


WETH^{FD.}CT.
32mmCDS
Black 1830 - 1842

JUNE 24, 1839

SINGLE RATE

80 TO 150 MILES



ACT OF APRIL 9, 1816
EFFECTIVE MAY 1, 1816

NOT OVER 30 MILES ---- 6 CENTS
30 TO 80 MILES ----- 10 CENTS
80 TO 150 MILES -- 12 1/2 CENTS
150 TO 400 MILES -- 18 1/2 CENTS
OVER 400 MILES ----- 25 CENTS

ACT OF MARCH 3, 1825
EFFECTIVE MAY 1, 1825

150 TO 400 MILES -- 18 3/4 CENTS