

# GREAT BRITAIN



## 1840 - 1855 Issues

### 1d and 2d 1840

small crown, imperf



### 1d and 2d 1841

small crown, imperf



line added

### 1s 1847

imperf



### 10d 1848

imperf



### 6d 1854

VR, imperf



### 1d and 2d 1854 - 1855

small crown, perf 16



re-engraved

### 1d and 2d 1854 - 1855

small crown, perf 14



re-engraved

### 1d and 2d 1855

blue paper, large crown, perf 16



### 1d and 2d 1855

blue paper, large crown, perf 14



# GREAT BRITAIN



## 1855 - 1858 Issues

**4d 1855**

small garter



blued paper

**4d 1856**

medium garter



blued paper



white paper

**4d 1855**

medium garter



white paper

**6d 1856**

emblems



(plate 1)

**1s 1856**

emblems



(plate 1)

**1d and 2d 1857**

large crown, white paper, perf 16



**1d and 2d 1857**

large crown, white paper, perf 14



**2d 1858**

letters in corners, plate numbers at sides, plates 13 to 15 with thinner top lines



plate 7



plate 8



plate 9



plate 12



plate 13



plate 14



plate 15

# GREAT BRITAIN



## 1862 - 1865 Issues

**3d 1862**  
emblems



plate 2

**4d 1862 - 1863**  
large garter



(plate 3)



(plate 4, lines)

**6d 1862 - 1864**  
emblems



(plate 3)



(plate 4, lines)

**9d 1862**  
emblems



(plate 2)

**1s 1862**  
emblems



plate 2 (1)

**4d 1865**  
large garter



plate 7



plate 8



plate 9



plate 10



plate 11



plate 12



plate 13



plate 14

# GREAT BRITAIN



1864 Issue

1d Printings of 1864 - 1866  
large crown, perf 14



plate 71



plate 72



plate 73



plate 74



plate 76



plate 78



plate 79



plate 80



plate 81



plate 82



plate 83



plate 84



plate 85



plate 86



plate 87



plate 88



plate 89



plate 90



plate 91



plate 92



plate 93



plate 94



plate 95



plate 96



plate 97



plate 98



plate 99



plate 100



plate 101



plate 102

Plates 69, 70, 75, 126, and 128 were rejected. Plate 77 stamps not issued.

# GREAT BRITAIN



1864 Issue

## 1d Printings of 1866 - 1869

large crown, perf 14



plate 103



plate 104



plate 105



plate 106



plate 107



plate 108



plate 109



plate 110



plate 111



plate 112



plate 113



plate 114



plate 115



plate 116



plate 117



plate 118



plate 119



plate 120



plate 121



plate 122



plate 123



plate 124



plate 125



plate 127



plate 129



plate 130



plate 131



plate 132



plate 133



plate 134

# GREAT BRITAIN



1864 Issue

1d Printings of 1869 - 1872

large crown, perf 14



plate 135



plate 136



plate 137



plate 138



plate 139



plate 140



plate 141



plate 142



plate 143



plate 144



plate 145



plate 146



plate 147



plate 148



plate 149



plate 150



plate 151



plate 152



plate 153



plate 154



plate 155



plate 156



plate 157



plate 158



plate 159



plate 160



plate 161



plate 162



plate 163



plate 164

# GREAT BRITAIN



1864 Issue

## 1d Printings of 1872 - 1875

large crown, perf 14



plate 165



plate 166



plate 167



plate 168



plate 169



plate 170



plate 171



plate 172



plate 173



plate 174



plate 175



plate 176



plate 177



plate 178



plate 179



plate 180



plate 181



plate 182



plate 183



plate 184



plate 185



plate 186



plate 187



plate 188



plate 189



plate 190



plate 191



plate 192



plate 193



plate 194

# GREAT BRITAIN



1864 Issue

## 1d Printings of 1876 - 1877

large crown, perf 14



plate 195



plate 196



plate 197



plate 198



plate 199



plate 200



plate 201



plate 202



plate 203



plate 204



plate 205



plate 206



plate 207



plate 208



plate 209



plate 210



plate 211



plate 212

# GREAT BRITAIN



1864 Issue

## 1d Printings of 1878 - 1879

large crown, perf 14



plate 213



plate 214



plate 215



plate 216



plate 217



plate 218



plate 219



plate 220



plate 221



plate 222



plate 223



plate 224



plate 225

# GREAT BRITAIN



## 1865 - 1867 Issues

**3d 1865**  
emblems



plate 4

**6d 1865**  
emblems



plate 5



plate 6

**9d 1865**  
emblems



plate 4

**1s 1865**  
emblems



plate 4

**3d 1867**  
spray



plate 4



plate 5



plate 6



plate 7



plate 8



plate 9



plate 10

**6d 1867**  
spray



plate 6

**6d 1869**  
spray



plate 8



plate 9

**9d 1865**  
spray



plate 4

**10d 1867**  
spray



plate 1

**1s 1867**  
spray



plate 4



plate 5



plate 6



plate 7

**2s 1867**  
spray



plate 1

# GREAT BRITAIN



## 1867 - 1870 Issues

**5s 1867**

maltese cross



plate 1



plate 2

**½ d 1870**

"Half Penny" in script



plate 1



plate 3



plate 4



plate 5



plate 6



plate 8



plate 9



plate 10



plate 11



plate 12



plate 13



plate 14



plate 15



plate 19



plate 20

**1½ d 1870**

large crown



plate 1



plate 3

# GREAT BRITAIN



## 1872 - 1874 Issues

6d 1872

spray



plate 11



plate 11



plate 12



plate 12

3d 1873

spray



plate 11



plate 12



plate 14



plate 15



plate 16



plate 17



plate 18



plate 19



plate 20

6d 1874

spray



plate 13



plate 14



plate 15



plate 16



plate 17

# GREAT BRITAIN



## 1873 - 1876 Issues

### 1s 1873

spray



plate 8



plate 9



plate 10



plate 11



plate 12



plate 13

### 2½d 1875

small anchor



plate 1



plate 2



plate 3

### 2½d 1876

orb



plate 3



plate 4



plate 5



plate 6



plate 7



plate 8



plate 9



plate 10



plate 11



plate 12



plate 13



plate 14



plate 15



plate 16



plate 17

# GREAT BRITAIN



## 1876 - 1880 Issues

**4d 1876**  
large garter



plate 15

**4d 1877**  
large garter



plate 15



plate 16

**8d 1876**  
large garter



plate 1

**10s 1877**  
maltese cross



plate 1

**£1 1878**  
maltese cross



plate 2

**2½d 1880**  
orb



plate 17



plate 18



plate 19



plate 20

**4d 1880**  
large garter



plate 17

**4d 1880**  
crown



plate 17



plate 18

**1s 1880**  
spray



plate 13

**2s 1880**  
spray



plate 1

# GREAT BRITAIN



## 1880 - 1881 Issues

**½d 1880**  
crown



**1d 1880**  
crown



**1½d 1880**  
crown



**2d 1880**  
crown



**5d 1881**  
crown



**2½d 1881**  
crown



plate 21



plate 22



plate 23

**3d 1881**  
crown



plate 20



plate 21

**6d 1881**  
crown



plate 17



plate 18

**1s 1881**  
crown



plate 13



plate 14

**1d 1881**  
crown



14 dots



16 dots

# GREAT BRITAIN



## 1880 - 1881 Issues

**£5 1882**  
two large anchors



plate 1

**5s 1882**  
large anchor



plate 4

**10s 1883**  
large anchor



plate 1

**£1 1882**  
large anchor



plate 1

**3d 1883**  
crown



surcharged

**6d 1883**  
crown



surcharged

# GREAT BRITAIN



## 1883 - 1884 Issues

1883



1884



1884



2/6d 1883  
anchor



5s 1884  
anchor



10s 1884  
anchor



£1 1884  
three crowns



# GREAT BRITAIN



## 1887 - 1900 Issues

imperial crown



die 1

die 2



£1 1888

three orbs



£1 1891

three crowns



1890

imperial crown



# GREAT BRITAIN



## 1902 - 1906 Issues

1902 - 1904 Issues - De La Rue Printings on Ordinary Paper, perf 14



1905 - 1906 Issues - De La Rue Printings on Chalky Paper, perf 14



# GREAT BRITAIN



## 1909 - 1911 Issues

### 1909 - 1910 Issues - De La Rue Printings, perf 14



### 1911 Issue - Harrison Printings, perf 14



### 1911 Issue - Harrison Printings, perf 15 x 14



### 1911 Issue - Somerset House Printings, perf 14



# GREAT BRITAIN



## 1911 - 1912 Issues

### 1911, Die 1A

crown



### 1911, Die 1B

crown



### 1912, Die 1B

royal cypher



### 1912, Die 2

crown



### 1912, Die 2

royal cypher



### 1912, Die 2

multiple royal cypher



# GREAT BRITAIN



## 1912 - 1922 Issues

1912

royal cypher

die I

die II



1913 Coils

multiple royal cypher



1922

royal cypher

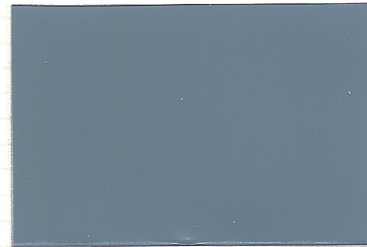


# GREAT BRITAIN



## 1913 - 1934 Issues

### 1913 Issue - Waterlow Printings



### 1915 Issue - De la Rue Printings



### 1918 Issue - Wilkinson Printings



### 1934 Issue - Waterlow Printings from re-engraved die



# GREAT BRITAIN



## 1924 Issues

1924

block GvR



1924 Coils

sideways block GvR



## 1924 British Empire Exhibition Issue



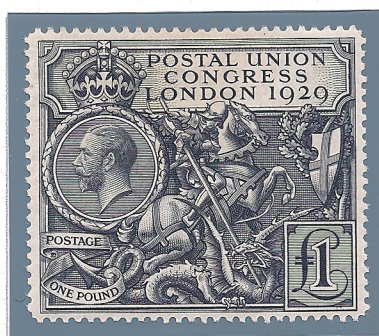
# GREAT BRITAIN



## 1925 British Empire Exhibition Issue



## 1929 Postal Union Congress Issue



### Coils

sideways block GvR



# GREAT BRITAIN



## 1934 - 1936 Issues

block GvR



Coils

sideways block GvR



## 1935 Silver Jubilee Issue



# GREAT BRITAIN



## 1914 - 1924 Postage Dues

crown GvR



## 1924 - 1931 Postage Dues

crown GvR mutiple



# GREAT BRITAIN



## 1882 - 1901 Inland Revenue Officials

1882 - 1885



three crowns



1888 - 1892

three orbs



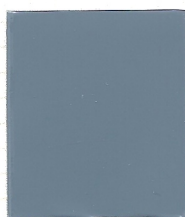
three crowns



1901



## 1902 Board of Education Officials



# GREAT BRITAIN



## 1883 - 1900 Government Parcels Officials

1883 - 1886



1887 - 1892



1897 - 1900



## 1896 - 1902 Office of Works Officials



## 1896 - 1901 Army Officials



# GREAT BRITAIN



## 1902 Army Officials

type 1 overprint



type 2 overprint



## 1902 - 1904 Board of Education Officials

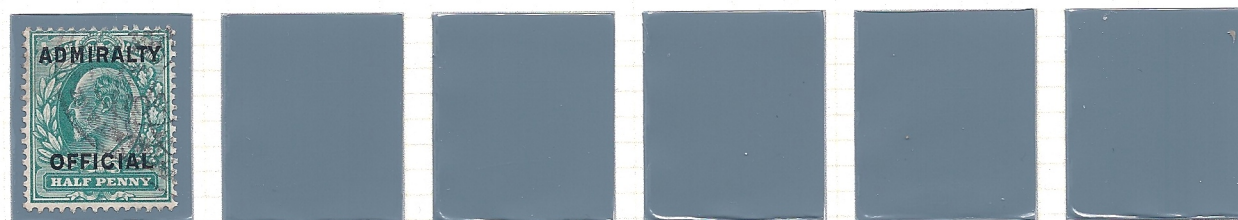


## 1903 Admiralty Officials

type 1 overprint



type 2 overprint



# GREAT BRITAIN



## 1902 - 1904 Inland Revenue Officials



three crowns



## 1902 Government Parcels Officials



## 1902 Office of Works Officials



## 1902 Royal Household Officials



# GREAT BRITAIN

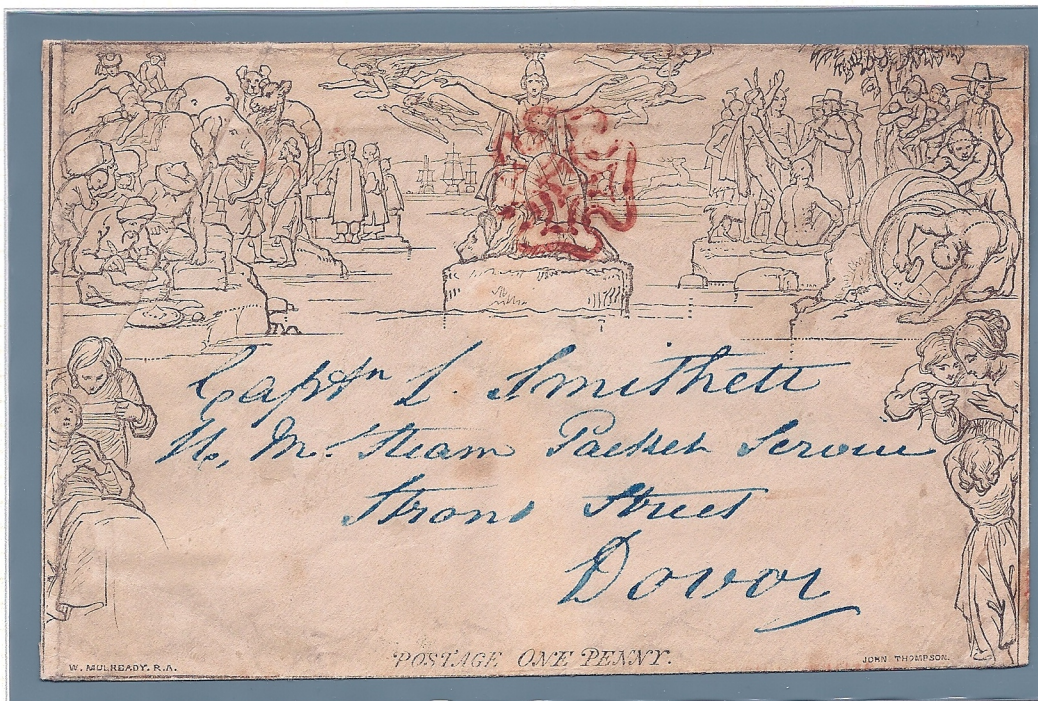


1840 Mulready Issue

1d lettersheet



1d envelope

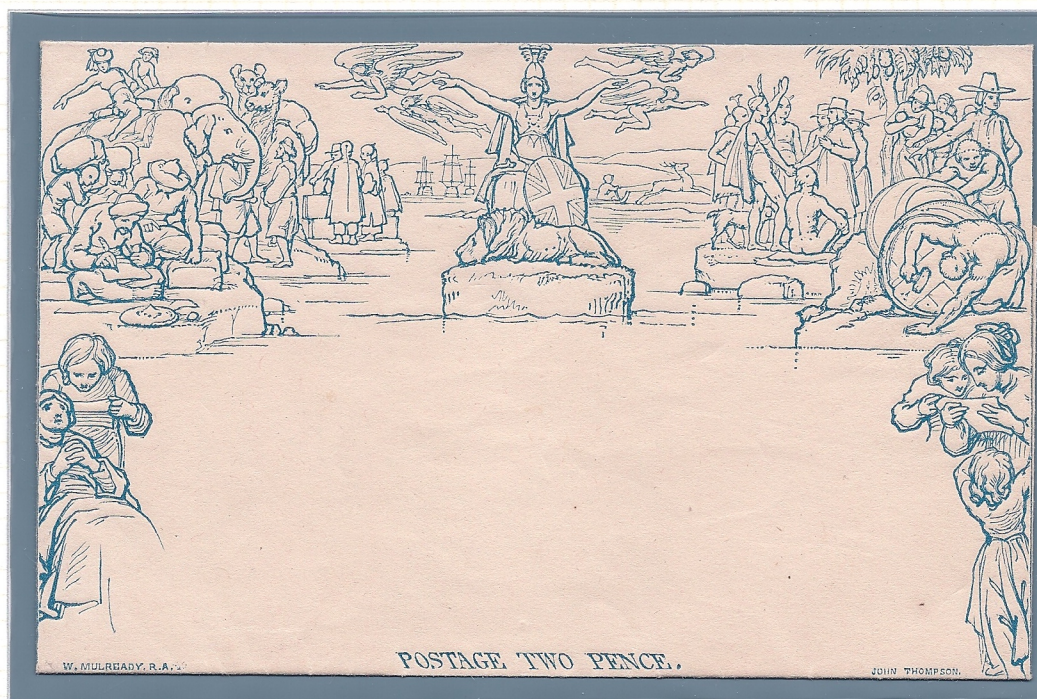


# GREAT BRITAIN



1840 Mulready Issue

2d lettersheet



2d envelope



## GREAT BRITAIN

### 1840 Mulready One Penny Lettersheet



21 May 1840 Bath to Ipswich, stereo A8, **first month use, letter about the new issue and cheap postage**

First sold in London on May 1, 1840 the Mulready lettersheets and envelopes predate the public sale of adhesive postage stamps by five days. One penny and two pence denominations were each produced as envelopes and lettersheets. The common design, featuring Britannia, was drawn by William Mulready and printed by William Clowes. After public ridicule of the design (see comment below), they began to be withdrawn in January 1841.

Thursday May 21<sup>st</sup> 1840  
This is the first of these "envelopes" that  
I have seen - the pink and blue threads, which  
you may observe in it, are to prevent forgeries -

From letter: Thursday, May 21st 1840, This is the first of these "envelopes" that I have seen - the pink and blue threads which you may observe in it are to prevent forgeries.

As the postage is now so cheap, I could not resist sending you one penny-worth ....

Have you seen any of these envelopes? I think they are the strangest looking things I ever saw, particularly after so much was said (before their appearance) of their beauty and elegance ...

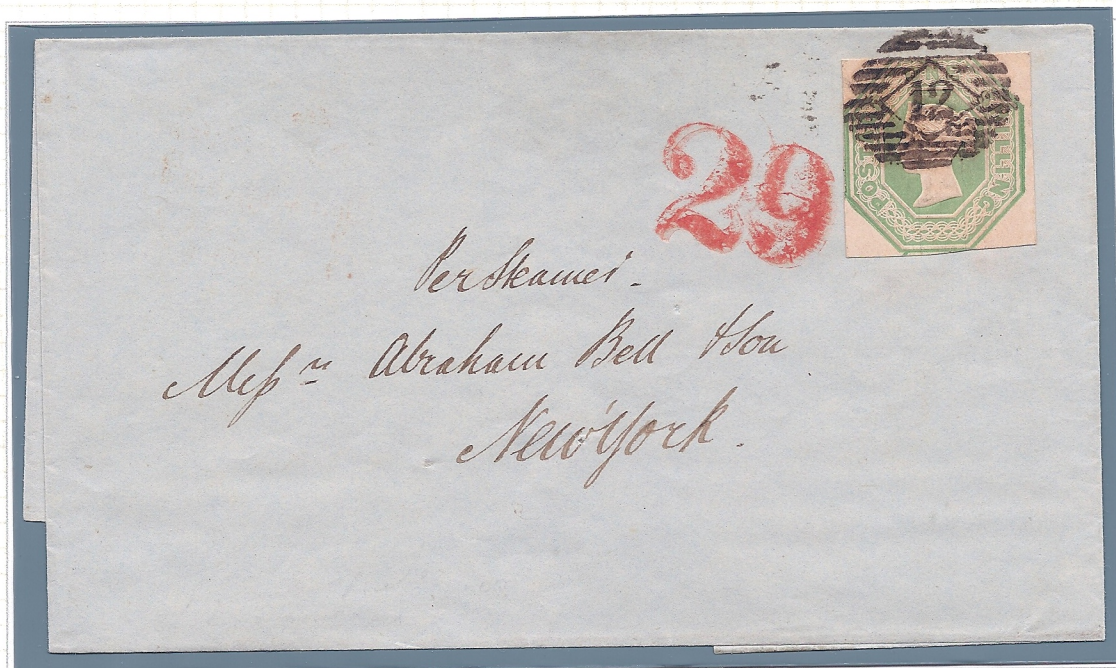
# GREAT BRITAIN



1847 Issue 1sh

## Retaliatory Rate Period

Two covers carried on consecutive Cunard Line sailings to Boston but handled differently



11 August 1848 London to New York, prepaid 1sh British packet postage, retaliatory **rated 29 due in New York** carried by Cunard steamer *Britannia* to Boston, arrived 3PM and mail was down-streamed to New York



25 August 1848 London to New York, prepaid 1sh British packet postage, retaliatory **rated 29 due in Boston** carried by Cunard steamer *Hibernia* to Boston, arrived 8 AM and mail was processed in Boston